

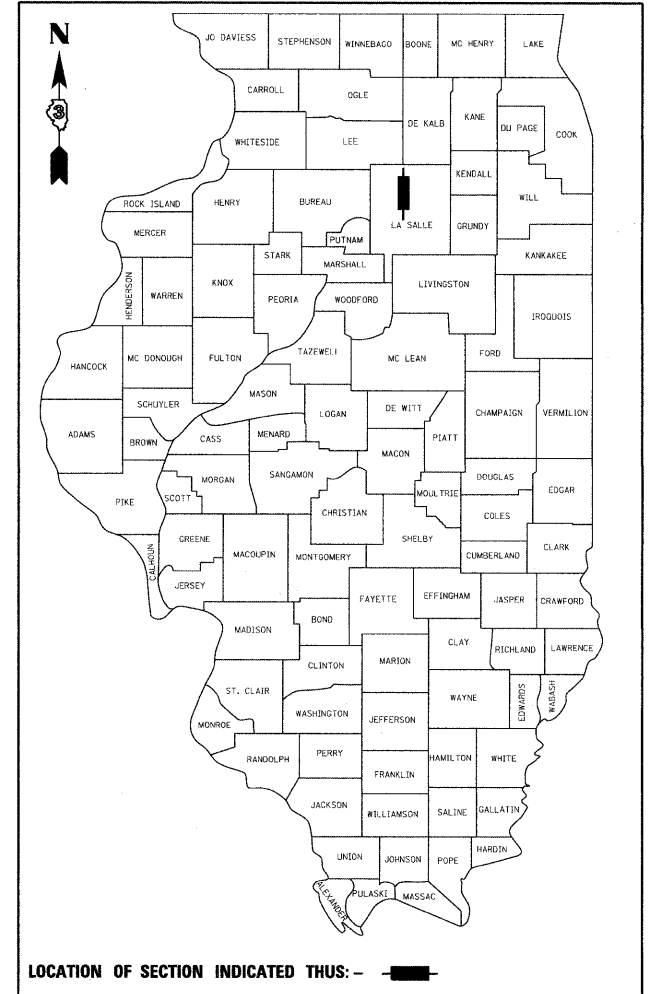
F.A.P. RTE.	SECTION	COUNTY	TOTAL SHEETS	SHEET NO.
68	(3)BR-3	LASALLE	61	1
FED. ROAD DIST. NO.	ILLINOIS	CONTRACT NO. 66A20		

P-93-067-02
D-93-088-11

STATE OF ILLINOIS
DEPARTMENT OF TRANSPORTATION
DIVISION OF HIGHWAYS
PROPOSED
HIGHWAY PLANS

F.A.P. ROUTE 68 (IL 23)
SECTION (3)BR-3
PROJECT: BRF-0068(111)
BRIDGE REPLACEMENT
LASALLE COUNTY

C-93-138-11
IL 23 OVER BUCK CREEK
3 MILES SOUTH OF US 52



LOCATION OF SECTION INDICATED THUS:

FUNCTIONAL CLASSIFICATION
MINOR ARTERIAL (RURAL)
F.A.P. ROUTE 68 (IL 23)
2010 ADT = 4300
P.C. = 87.0% S.U. = 6.0% M.U. = 7.0%

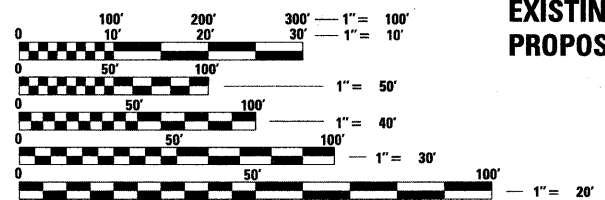
INDEX OF SHEETS

1	COVER SHEET
2	GENERAL NOTES & COMMITMENTS
3	SUMMARY OF QUANTITIES
4	TYPICAL SECTIONS
5	SCHEDULE OF QUANTITIES
6	ALIGNMENT AND TIES
7-8	PLAN AND PROFILE
9-13	MAINTENANCE OF TRAFFIC
14-48	BRIDGE PLANS
49-50	ROADWAY DETAILS
51-61	CROSS SECTIONS

HIGHWAY STANDARDS

000001-06	STANDARD SYMBOLS, ABBREVIATIONS AND PATTERNS
001001-02	AREAS OF REINFORCEMENT BARS
001006	DECIMAL OF AN INCH AND OF A FOOT
280001-06	TEMPORARY EROSION CONTROL SYSTEMS
406201-01	MAILBOX TURNOUT
420401-08	BRIDGE APPROACH PAVEMENT CONNECTOR
482001-02	HMA SHOULDER ADJACENT TO FLEXIBLE PAVEMENT
515001-03	NAME PLATE FOR BRIDGES
542301-03	PRECAST REINFORCED CONCRETE FLARED END SECTION
630001-10	STEEL PLATE BEAM GUARDRAIL
630201-06	PCC/HMA STABILIZATION AT STEEL PLATE BEAM GUARDRAIL
630301-05	SHOULDER WIDENING FOR TYPE I (SPECIAL) GUARDRAIL TERMINALS
631031-10	TRAFFIC BARRIER TERMINAL, TYPE 6
635006-03	REFLECTOR AND TERMINAL MARKER PLACEMENT
635011-02	REFLECTOR MARKER AND MOUNTING DETAILS
701201-04	LANE CLOSURE, 2L, 2W, DAY ONLY, FOR SPEEDS > 45 MPH
701321-12	LANE CLOSURE, 2L, 2W, BRIDGE REPAIR WITH BARRIER
701901-02	TRAFFIC CONTROL DEVICES
704001-07	TEMPORARY CONCRETE BARRIER
780001-03	TYPICAL PAVEMENT MARKINGS
781001-03	TYPICAL APPLICATIONS RAISED REFLECTIVE PAVEMENT MARKERS

MICROFILMED _____
REEL NUMBER _____
AWARDED _____
RESIDENT ENGINEER _____
AS BUILT CHANGES WERE MADE
ON THE FOLLOWING SHEETS _____



FULL SIZE PLANS HAVE BEEN PREPARED USING STANDARD ENGINEERING SCALES. REDUCED SIZED PLANS WILL NOT CONFORM TO STANDARD SCALES. IN MAKING MEASUREMENTS ON REDUCED PLANS, THE ABOVE SCALES MAY BE USED.

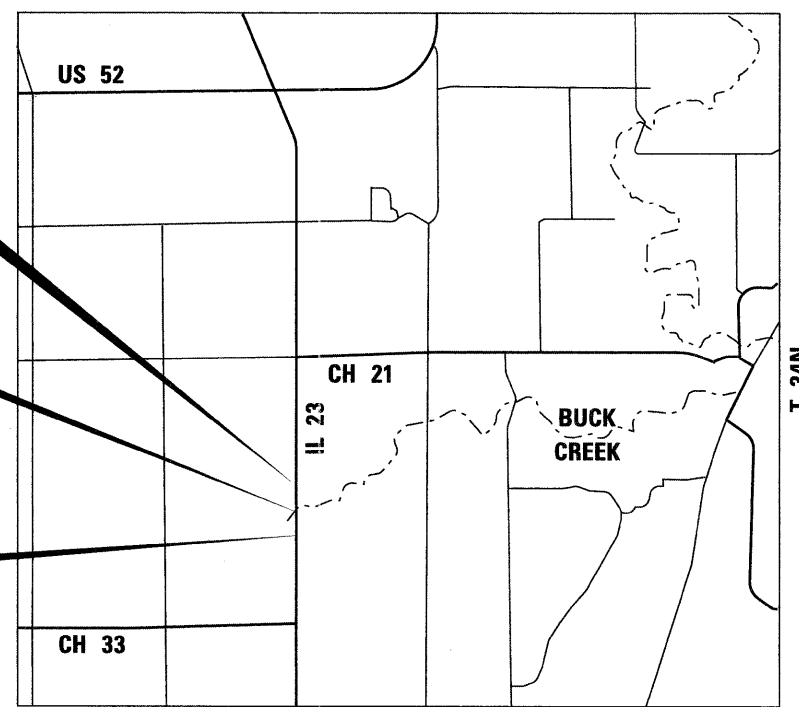
J.U.L.I.E.
JOINT UTILITY LOCATION INFORMATION FOR EXCAVATION
1-800-892-0123
OR 811

DISTRICT 3 NO. (815) 434-6131
PROJECT ENGINEER: JOE KANNEL, P.E.
UNIT CHIEF: PAT BRABOY
TOWNSHIP: DAYTON
CONTRACT NO. 66A20

END IMPROVEMENT
STA 244 + 50.00

STA 239 + 61.00 TO STA 241 + 61.00
BRIDGE REPLACEMENT
EXISTING S.N. 050-0045
PROPOSED S.N. 050-0255

BEGIN IMPROVEMENT
STA 236 + 50.00



LOCATION MAP
NOT TO SCALE

GROSS LENGTH = 800.00 FT. = 0.15 MILE
NET LENGTH = 800.00 FT. = 0.15 MILE

EXPIRATION DATE 11-30-11
DATE 10/20/11

benesch
engineers · scientists · planners
Alfred Benesch & Company
205 North Michigan Avenue, Suite 2400
Chicago, Illinois 60601
312-565-0450
Job No. 3938.11

STATE OF ILLINOIS
DEPARTMENT OF TRANSPORTATION
DIVISION OF HIGHWAYS

SUBMITTED _____ 20 _____

Eric S. Threlkeld
DEPUTY DIRECTOR OF HIGHWAYS, REGION ENGINEER

Scott E. Sittler
acting ENGINEER OF DESIGN AND ENVIRONMENT

William R. Freuler
DIRECTOR OF HIGHWAYS, CHIEF ENGINEER

PRINTED BY THE AUTHORITY
OF THE STATE OF ILLINOIS