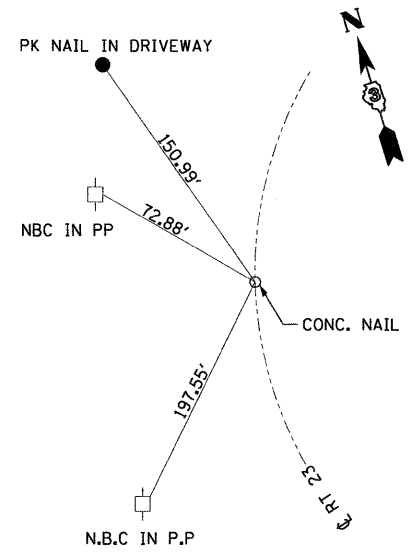
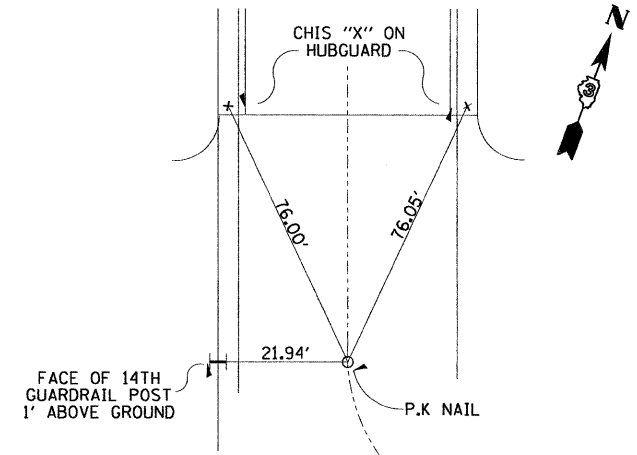


**CURVE REVEXCL1**  
 PI STA = 235+00.00  
 $\Delta = 0^\circ 16' 13.80''$  (RT)  
 R = 169,451.16'  
 T = 400.00'  
 L = 800.00'  
 E = 0.47'  
 PC STA = 231+00.00  
 PT STA = 239+00.00

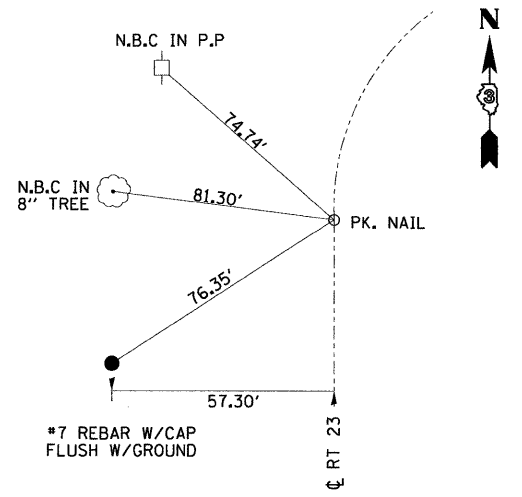
COORDINATE DATA			
STATION	NORTHING	EASTING	REMARKS
228+22.70	1,732,462.45	846,464.18	POT IL 23
230+46.26	1,732,686.01	846,464.17	POT IL 23
231+00.00	1,732,739.75	846,463.97	PC CURVE REVEXCL1
235+00.00	1,733,139.75	846,464.09	PI CURVE REVEXCL1
239+00.00	1,733,539.75	846,466.09	PT CURVE REVEXCL1
240+48.50	1,733,688.25	846,466.83	POT IL 23
248+14.36	1,734,454.10	846,470.66	POT IL 23



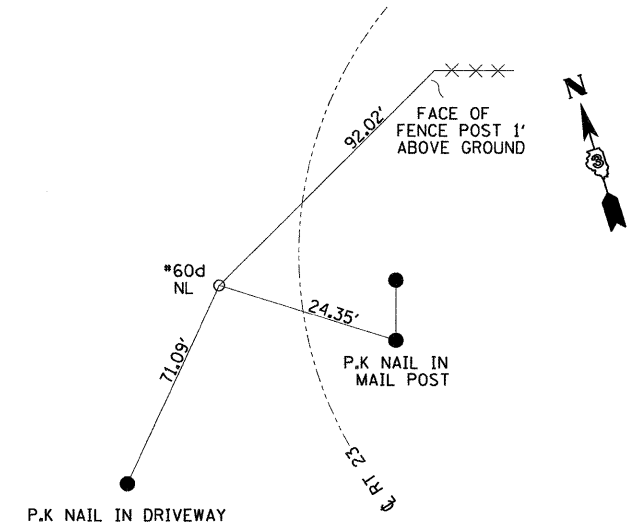
PNT. #23 P.O.C STA. 233+36.27



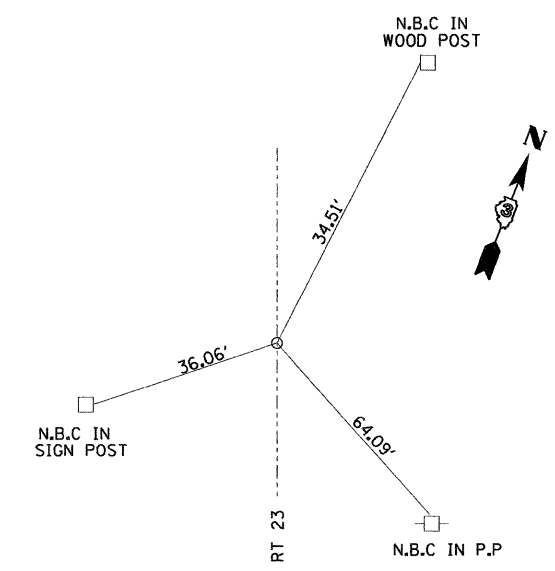
PNT. #13 P.T STA. 239+00.00



PNT. #11 P.C STA. 231+00



PNT. #12 P.I STA. 235+00 0.472'LT



PNT. #26 P.O.T STA. 248+14.36

**benesch** Alfred Benesch & Company  
 205 North Michigan Avenue, Suite 2400  
 Chicago, Illinois 60601  
 312-565-0450 Job No. 3938.11

FILE NAME = ... \D366A20-sht-align-ties.dgn	USER NAME = tblank	DESIGNED - AE	REVISED -
PLOT SCALE = 1"=100'	PLOT DATE = 10/20/11	DRAWN - TMB	REVISED -
		CHECKED - JMM	REVISED -
		DATE - 10/20/11	REVISED -

**STATE OF ILLINOIS  
 DEPARTMENT OF TRANSPORTATION**

**ALIGNMENT & TIES  
 IL 23**

SCALE: 1"=100' SHEET NO. 1 OF 1 SHEETS STA. TO STA.

F.A.P. RTE. 68	SECTION (3)BR-3	COUNTY LASALLE	TOTAL SHEETS 61	SHEET NO. 6
CONTRACT NO. 66A20				
FED. ROAD DIST. NO. ILLINOIS FED. AID PROJECT				