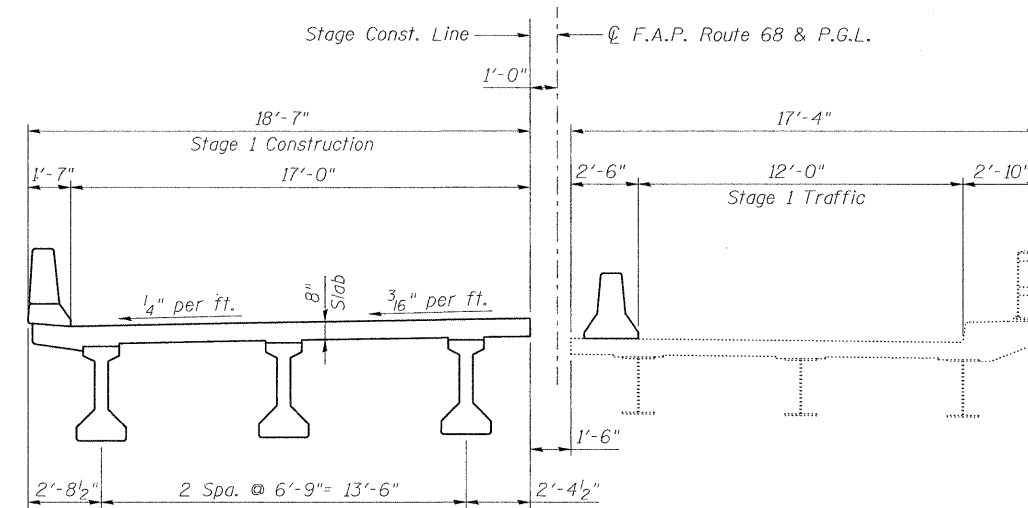
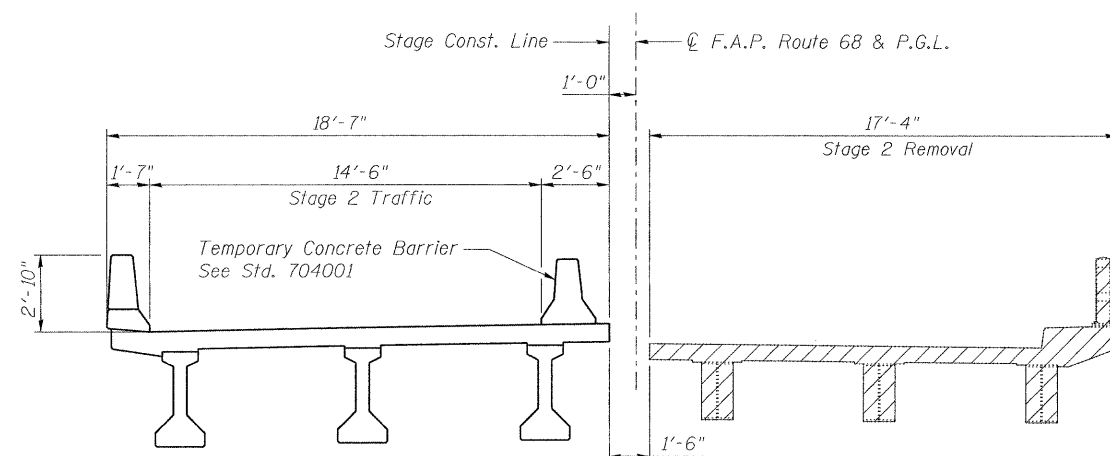


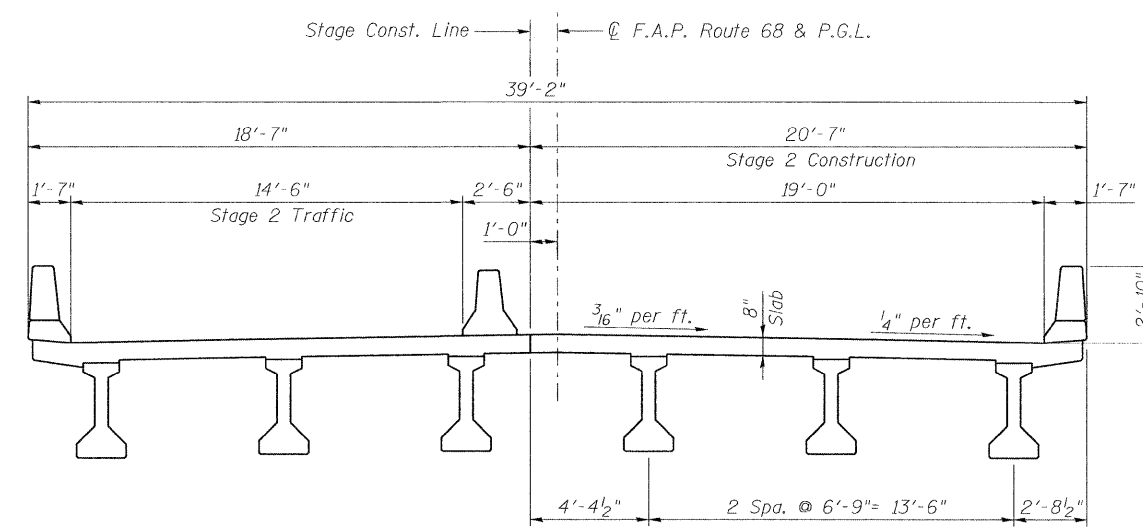
**STAGE 1 REMOVAL**



**STAGE 1 CONSTRUCTION**



**STAGE 2 REMOVAL**



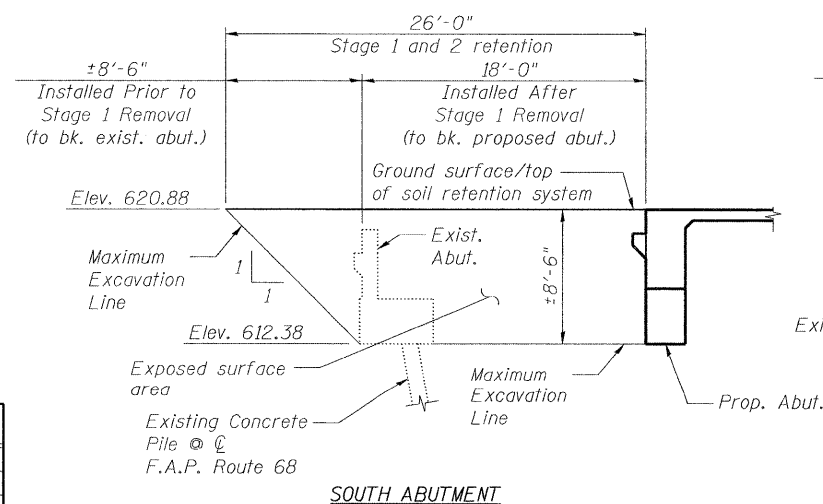
**STAGE 2 CONSTRUCTION**

**LEGEND**

Removal of Existing Structures

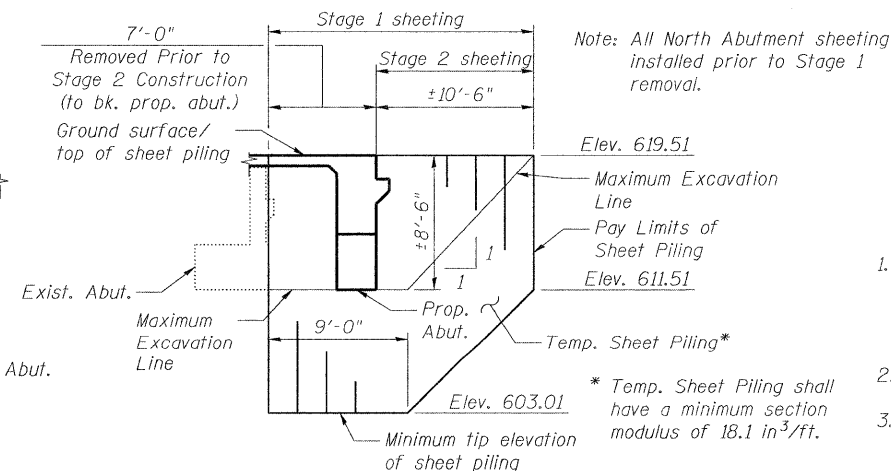
**BILL OF MATERIAL**

ITEM	UNIT	TOTAL
Temporary Sheef Piling	Sq. Ft.	253
Temporary Soil Retention System	Sq. Ft.	190



**TEMPORARY SOIL RETENTION SYSTEM**

(at F.A.P. Route 68)



**TEMPORARY SHEET PILING**

(at F.A.P. Route 68)

**NOTES:**

1. If the Contractor chooses to alter the temporary cantilevered sheet piling design requirements shown on the plans, a design submittal including plan details and calculations will be required for review and acceptance by the Engineer.
2. Cross Sections are shown looking North.
3. See sheet S5 of S35 for details of Temporary Concrete Barrier. For quantity, see Roadway Plans.

**benesch**  
engineers · scientists · planners

Alfred Benesch & Company  
205 North Michigan Avenue, Suite 2400  
Chicago, Illinois 60601  
312-565-0450 Job No. 3938.11

FILE NAME =	USER NAME = akeaschall	DESIGNED - JLS	REVISED -
8590225.66A20.004.staging.dgn	PLOT SCALE =	CHECKED - AJK	REVISED -
	PLOT DATE = 10/20/2011	DRAWN - RMG	REVISED -
		CHECKED - HMA	REVISED -

**STATE OF ILLINOIS  
DEPARTMENT OF TRANSPORTATION**

**STAGE CONSTRUCTION DETAILS AND TEMPORARY SHEET PILING  
STRUCTURE NO. 050-0255**

SHEET NO. S4 OF S35 SHEETS

F.A.P. RTE.	SECTION	COUNTY	TOTAL SHEETS	SHEET NO.
68	(3)BR-3	LASALLE	61	17
CONTRACT NO. 66A20				
ILLINOIS FED. AID PROJECT				

x:\3900s\3938\structures\1123over-buckcreek\final\plans\0500225.66A20.004.staging.dgn 14:46:44 10/20/2011