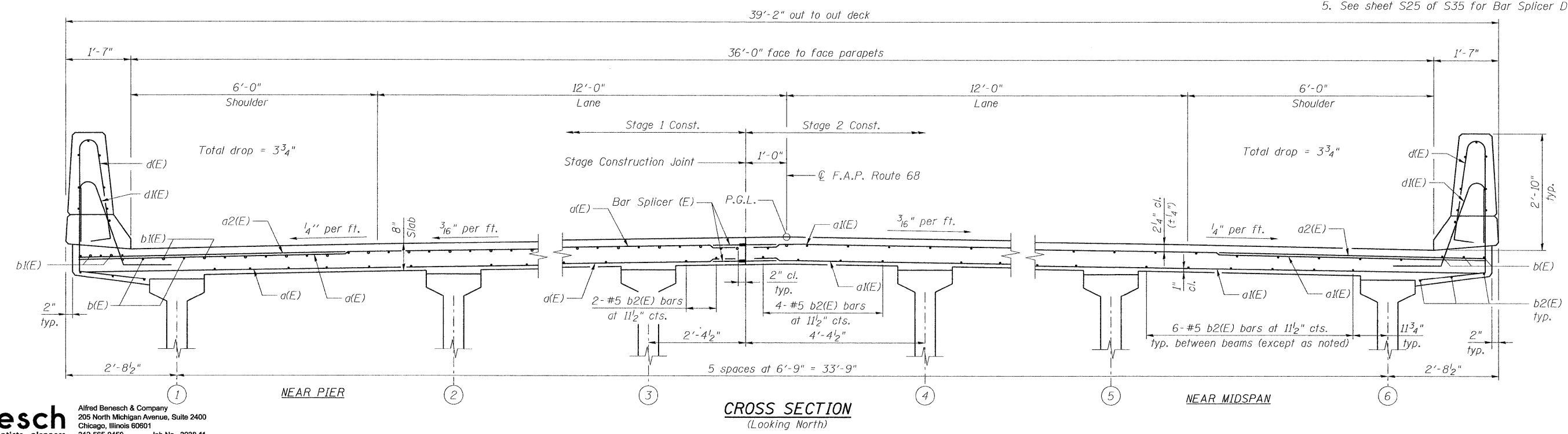


MINIMUM BAR LAP
(Slab)
#5 bar = 3'-3"

PARTIAL PLAN
(South half shown)

- NOTES:**
1. See sheet S11 of S35 for superstructure details, parapet reinforcement and Bill of Material.
 2. See sheet S12 of S35 for Section A-A.
 3. See sheet S13 of S35 for Section B-B.
 4. Bars indicated thus 5x3-#5 etc. indicates 5 lines of bars with 3 lengths per line.
 5. See sheet S25 of S35 for Bar Splicer Details.



CROSS SECTION
(Looking North)

benesch
engineers · scientists · planners
Alfred Benesch & Company
205 North Michigan Avenue, Suite 2400
Chicago, Illinois 60601
312-665-0450 Job No. 3938.11

FILE NAME =
0500225_66A20_010_super.dgn
PLOT DATE = 10/20/2011

USER NAME = akoeschall
DESIGNED - JLS
CHECKED - AJK
DRAWN - RMG
CHECKED - HMA

REVISIONS:
REVISOR: -
REVISION: -
REVISOR: -
REVISION: -
REVISOR: -
REVISION: -

STATE OF ILLINOIS
DEPARTMENT OF TRANSPORTATION

SUPERSTRUCTURE
STRUCTURE NO. 050-0255

SHEET NO. S10 OF S35 SHEETS

F.A.P. RTE. 68	SECTION (3)BR-3	COUNTY LASALLE	TOTAL SHEETS 61	SHEET NO. 23
CONTRACT NO. 66A20				
ILLINOIS FED. AID PROJECT				

x:\3900s\3938\structures\1123over-buck-creek\final\plans\0500225-66A20-010_super.dgn
 14:47:10
 10/20/2011