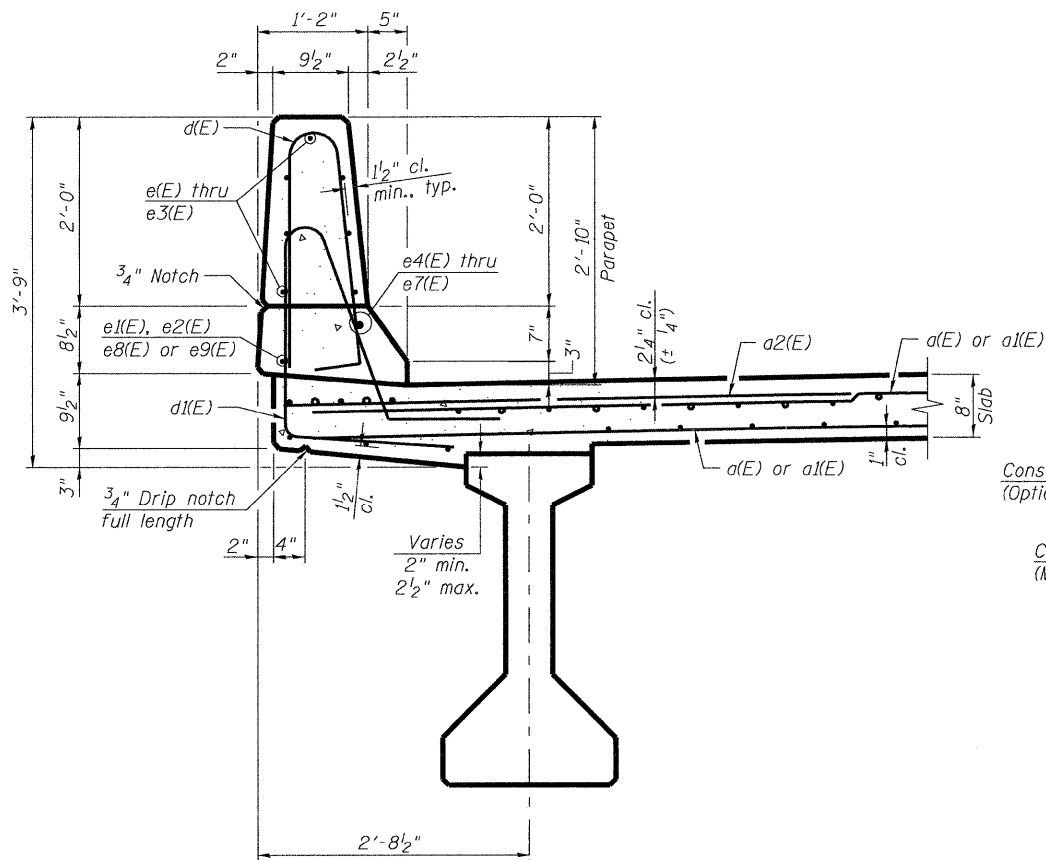


INSIDE ELEVATION OF PARAPET

**SUPERSTRUCTURE
BILL OF MATERIAL**

Bar	No.	Size	Length	Shape
a(E)	429	#5	18'-3"	—
a1(E)	429	#5	20'-3"	—
a2(E)	518	#6	6'-6"	—
b(E)	210	#5	30'-8"	—
b1(E)	78	#6	41'-0"	—
b2(E)	216	#5	26'-1"	—
d(E)	308	#5	5'-7"	┌
d1(E)	308	#5	7'-2"	┌
e(E)	56	#4	15'-8"	—
e1(E)	32	#4	4'-2"	—
e2(E)	32	#4	8'-2"	—
e3(E)	42	#4	16'-4"	—
e4(E)	4	#8	31'-8"	—
e5(E)	4	#8	4'-2"	—
e6(E)	4	#8	8'-2"	—
e7(E)	4	#8	27'-7"	—
e8(E)	4	#4	31'-8"	—
e9(E)	4	#4	26'-0"	—
m(E)	14	#6	18'-4"	—
m1(E)	36	#6	4'-7"	—
m2(E)	4	#6	1'-5"	—
m3(E)	14	#6	20'-4"	—
m4(E)	48	#4	5'-11"	—
m5(E)	12	#8	6'-0"	—
s(E)	72	#5	6'-10"	┌
s1(E)	72	#4	10'-10"	┌
s2(E)	60	#4	11'-0"	┌
v(E)	84	#5	3'-8"	┌
Reinforcement Bars, Epoxy Coated			Pound	49,260
Concrete Superstructure			Cu. Yd.	223.4
Bridge Deck Grooving			Sq. Yd.	529
Protective Coat			Sq. Yd.	679

Bars indicated thus 6x3-#5 etc. indicates 6 lines of bars with 3 lengths per line.



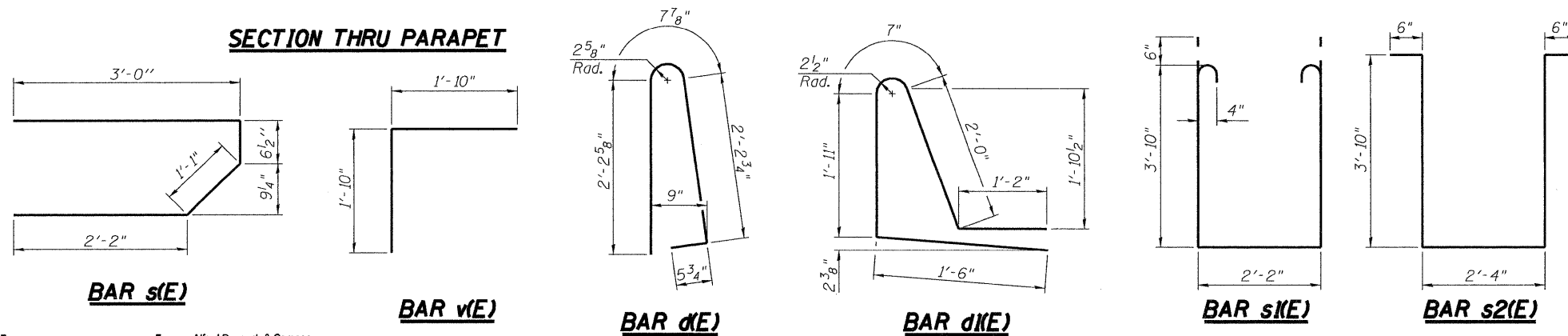
SECTION THRU PARAPET

Non-staining gray one component non-sag elastomeric gun grade polyurethane sealant meeting the requirements of ASTM C-920, Type S, Grade NS, Class 25, use T with a 5/8" backer rod.

1/2" Preformed Self-Expanding Cork Joint Filler according to Article 1051.07 of the Std. Spec. Cost included with Concrete Superstructure.

Const. Jts. at Abutments and Piers 1/8" Aluminum sheet ASTM B 209 alloy 3003-H14 coated to minimize reaction with wet concrete. Cost included with Concrete Superstructure

PARAPET JOINT DETAILS



MINIMUM BAR LAP

(Parapet)
#4 bar = 2'-0"
#8 bar = 5'-2"

benesch
engineers · scientists · planners
Alfred Benesch & Company
205 North Michigan Avenue, Suite 2400
Chicago, Illinois 60601
312-585-0450 Job No. 3938.11

FILE NAME =	USER NAME = jsurber	DESIGNED - JLS	REVISED -
0500225.66A20.011_superdet.dgn	PLOT SCALE =	CHECKED - AJK	REVISED -
	PLOT DATE = 11/07/2011	DRAWN - RMG	REVISED -
		CHECKED - HMA	REVISED -

**STATE OF ILLINOIS
DEPARTMENT OF TRANSPORTATION**

**SUPERSTRUCTURE DETAILS
STRUCTURE NO. 050-0255
SHEET NO. S11 OF S35 SHEETS**

F.A.P. RTE.	SECTION	COUNTY	TOTAL SHEETS	SHEET NO.
68	(3)BR-3	LASALLE	61	24
CONTRACT NO. 66A20			ILLINOIS FED. AID PROJECT	

x:\3900a\3938\structures\123overbuckcreek\1.nel\plans\0500225.66A20.011_superdet.dgn

085244 11/07/2011