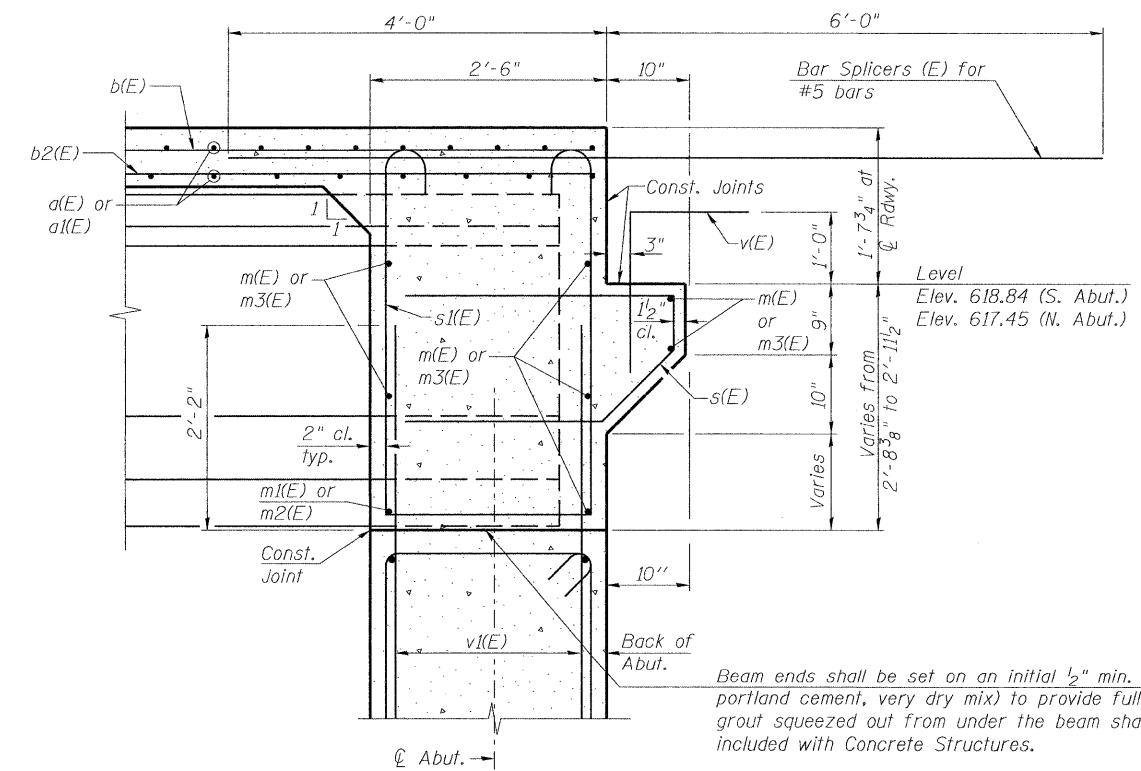


DIAPHRAGM ELEVATION AT ABUTMENT
 (N. Abutment shown looking North)
 (S. Abutment - Opposite Hand)



SECTION A-A

- NOTES:**
1. Reinforcement bars in diaphragm are billed with superstructure on sheet S11 of S35.
 2. Concrete in diaphragm is included with Concrete Superstructure on sheet S11 of S35.
 3. For details of bars s(E) & s(E), see sheet S11 of S35.
 4. For details of v(E) bars, see sheets S20 and S21 of S35.
 5. For Bar Splicer Details, see sheet S25 of S35.

MINIMUM BAR LAP
 #6 bar = 3'-4"

benesch
 engineers · scientists · planners
 Alfred Benesch & Company
 205 North Michigan Avenue, Suite 2400
 Chicago, Illinois 60601
 312-565-0450 Job No. 3938.11

FILE NAME =
 0500225.66A20_012_abutdiaph.dgn

USER NAME = akeaschal1
 DESIGNED - JLS
 CHECKED - AJK
 DRAWN - RMG
 CHECKED - HMA
 PLOT SCALE =
 PLOT DATE = 10/20/2011

REVISIONS
 REVISED -
 REVISED -
 REVISED -
 REVISED -

STATE OF ILLINOIS
DEPARTMENT OF TRANSPORTATION

INTEGRAL ABUTMENT DIAPHRAGM DETAILS
STRUCTURE NO. 050-0255
 SHEET NO. S12 OF S35 SHEETS

F.A.P. RTE.	SECTION	COUNTY	TOTAL SHEETS	SHEET NO.
68	(3)BR-3	LASALLE	61	25
			CONTRACT NO. 66A20	
ILLINOIS FED. AID PROJECT				

x:\3900s\structures\1123over-buckcreek\final\plans\0500225-66A20-012_abutdiaph.dgn
 14:47:19
 10/20/2011