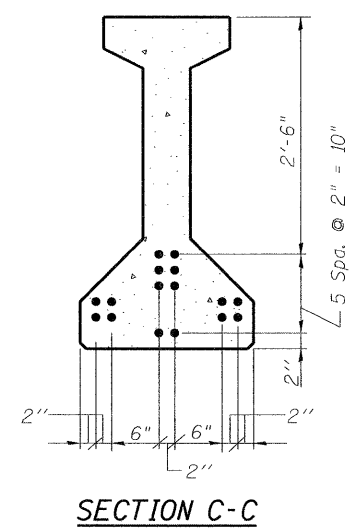
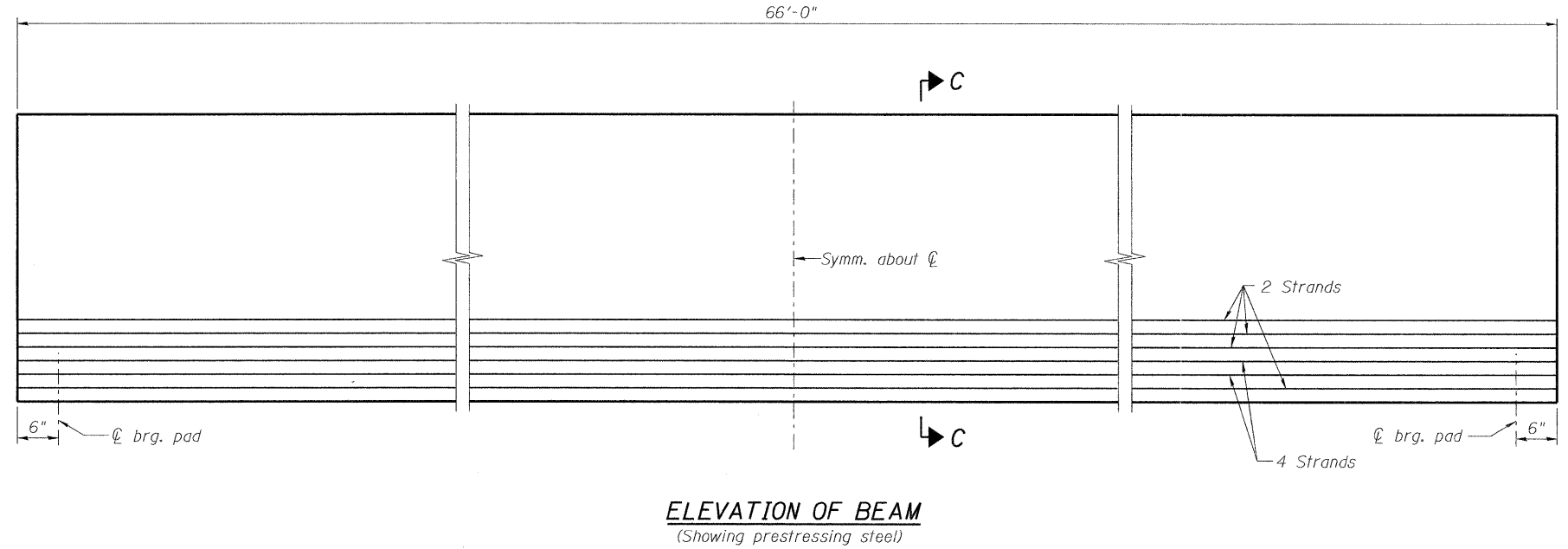


2- #8 G₆ bar assembly with threaded coupler splice at each end. (See sheet S19 of S35 for details).

Note A:
Hex nuts (top and bottom) with lock washers (top). Only tighten sufficiently to compress lock washers.

SECTION A-A

SECTION B-B



*****BAR LIST
ONE BEAM ONLY**

| Bar | No. | Size | Length | Shape |
|----------------|-----|------|--------|-------|
| G ₁ | 79 | #4 | 8'-5" | ∩L |
| G ₂ | 10 | #4 | 6'-8" | ∩ |
| G ₃ | 8 | #6 | 34'-2" | — |
| G ₄ | 38 | #3 | 4'-11" | ∩X |
| G ₅ | 66 | #3 | 2'-6" | ∩ |
| G ₆ | 4 | #8 | 6'-6" | U |

***For information only

Notes:
See sheet S19 of S35 for additional details and Bill of Material.
Required release strength, f'_{ci} , shall be 5,000 psi.
Required final strength, f'_c , shall be 6,000 psi.

NOTE:
For locations of 1" I.D. holes for permanent bracing, see sheets S16 and S19 of S35.

x:\3900s\3938\structures\1123overbuckcreek\final\p1ans\0500225-66A20-018-ppcbeam2.dgn 14:47:44 10/20/2011