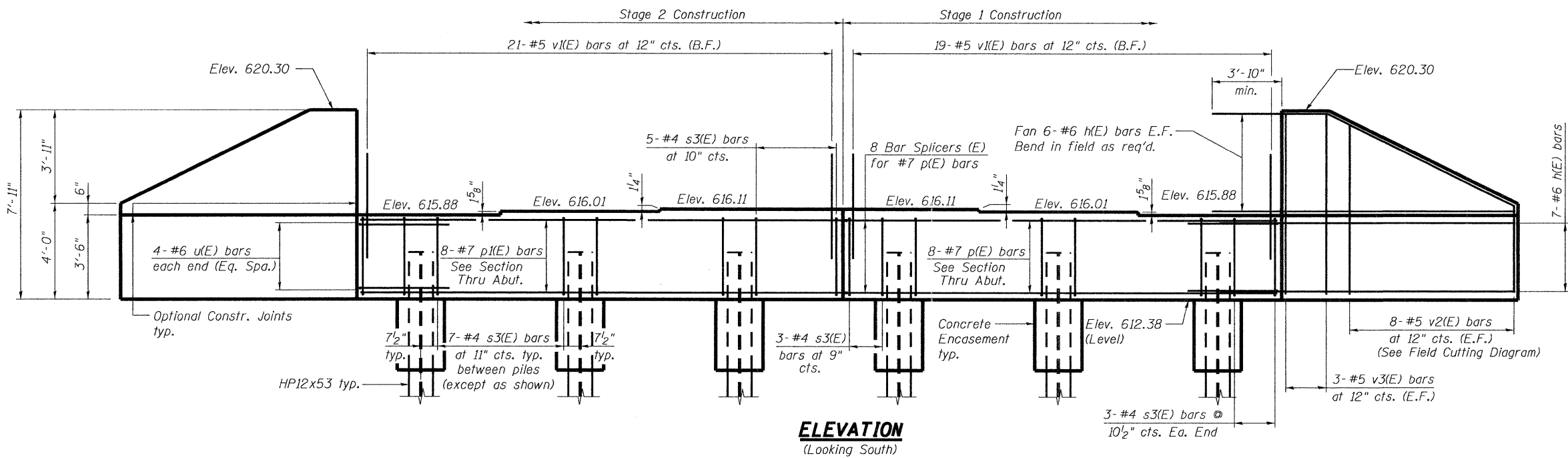
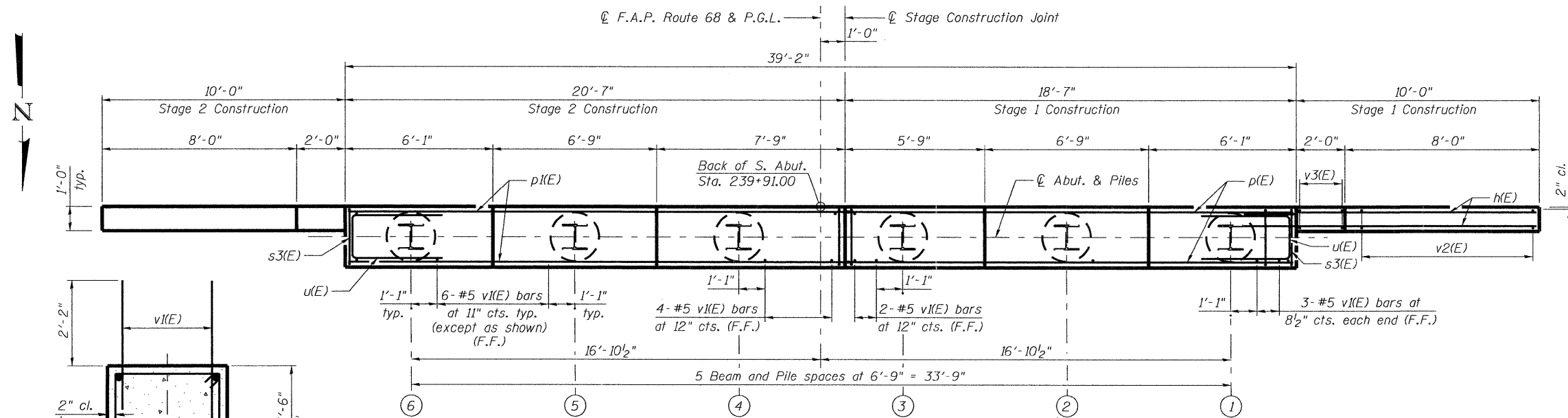


BILL OF MATERIAL

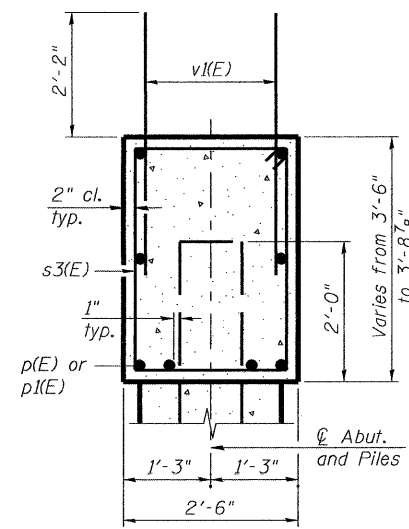
Bar	No.	Size	Length	Shape	
h(E)	52	#6	14'-8"	—	
p(E)	8	#7	18'-5"	—	
p1(E)	8	#7	20'-5"	—	
s3(E)	42	#4	11'-5"	□	
u(E)	8	#6	9'-9"	—	
v1(E)	76	#5	4'-4"	—	
v2(E)	16	#5	10'-9"	—	
v3(E)	12	#5	7'-6"	—	
Concrete Structures				Cu. Yd.	17.9
Reinforcement Bars, Epoxy Coated				Pound	2,850
Furnishing Steel Piles, HP12x53				Foot	245
Driving Piles				Foot	245
Test Pile Steel, HP12x53				Each	1
Pile Shoes				Each	6
Concrete Encasement				Cu. Yd.	2.2



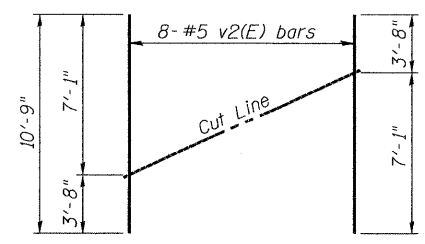
ELEVATION
(Looking South)



PLAN

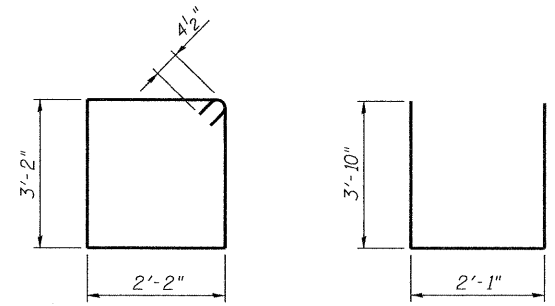


SECTION THRU ABUT.



FIELD CUTTING DIAGRAM

Order v2(E) full length. Cut as shown and use remainder of bars in opposite face.



BAR s3(E)

BAR u(E)

PILE DATA

Type: HP12x53 with pile shoes
Nominal Required Bearing: 263 kips
Factored Resistance Available: 145 kips
Est. Length: 49 feet
No. Production Piles: 5
No. Test Piles: 1

NOTES:

- Four steps monolithically with cap.
- Piles shall be driven through 24" diameter precored holes extending to elevation 602.38 according to Article 512.09(c) of the Standard Specifications. Cost included in Driving Piles.
- The Contractor shall limit the pile hammer size selected considering the relatively high soil strengths indicated in the borings and avoid overdriving the piles beyond their nominal required bearing to prevent pile damage during driving.
- E.F. denotes Each Face, F.F. denotes Front Face and B.F. denotes Back Face.
- For details of Bar Splicers, see sheet S25 of S35.
- For details of piles and concrete encasement, see sheet S24 of S35.

benesch
engineers · scientists · planners
Alfred Benesch & Company
205 North Michigan Avenue, Suite 2400
Chicago, Illinois 60601
312-565-0450 Job No. 3938.11

FILE NAME =	USER NAME = jaurber	DESIGNED - JLS	REVISED -
0500225.66A28_028_sabutdet.dgn	PLOT SCALE =	CHECKED - AJK	REVISED -
	PLOT DATE = 11/07/2011	DRAWN - RMG	REVISED -
		CHECKED - HMA	REVISED -

STATE OF ILLINOIS
DEPARTMENT OF TRANSPORTATION

SOUTH ABUTMENT DETAILS
STRUCTURE NO. 050-0255
SHEET NO. S20 OF S35 SHEETS

F.A.P. RTE.	SECTION	COUNTY	TOTAL SHEETS	SHEET NO.
68	(3)BR-3	LASALLE	61	33
CONTRACT NO. 66A20			ILLINOIS FED. AID PROJECT	

X:\3900s\3938\structures\1123overbuckcreek\final\plans\0500225_66A20_028_sabutdet.dgn 08/24/15 11/07/2011