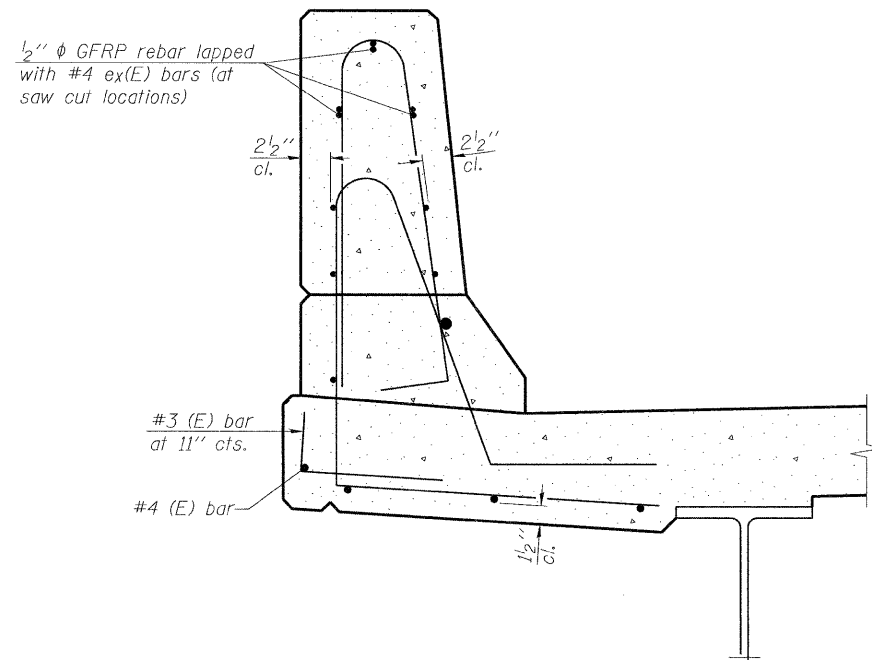
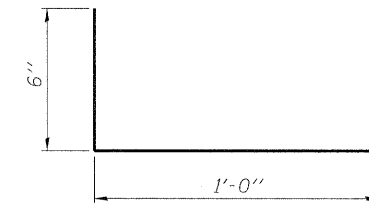


**SECTION**  
(Showing dimensions)

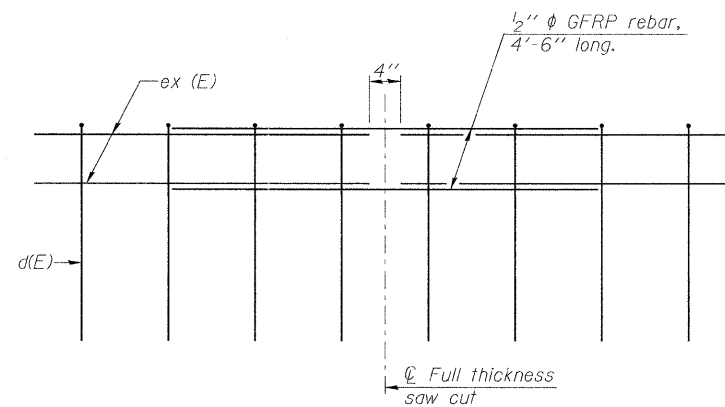
\* See Superstructure Details.



**SECTION**  
(Showing reinforcement clearances for slip forming and additional reinforcement bars)



**#3 (E) BAR**



**GFRP REBAR STIFFENING DETAIL**

(Place as shown in parapet section at each parapet joint location.)

**GENERAL NOTES**  
All dimensions shall remain the same as shown on superstructure details, except dimensions A and B which are to be revised as shown to provide additional clearance. Additional concrete needed to revise dimension A and B = 0.0165 cu. yds./ft. of parapet.  
Place aluminum sheet in curb portion at and near piers. Full thickness saw cut at all joint locations in lieu of cork joint filler.  
Steel superstructure shown. Other superstructure types similar.



Alfred Benesch & Company  
205 North Michigan Avenue, Suite 2400  
Chicago, Illinois 60601  
312-565-0450 Job No. 3938.11

SFP-34

7-1-10

FILE NAME =  
0508225.66A20\_026.slipformopt.dgn

USER NAME = akeaschall  
DESIGNED - JLS  
CHECKED - AJK  
PLOT SCALE =  
DRAWN - RMG  
PLOT DATE = 10/20/2011  
CHECKED - HMA

REVISI  
CHECKED - AJK  
REVISI  
DRAWN - RMG  
CHECKED - HMA

REVISI  
REVISI  
REVISI  
REVISI

STATE OF ILLINOIS  
DEPARTMENT OF TRANSPORTATION

CONCRETE PARAPET SLIPFORMING OPTION  
STRUCTURE NO. 050-0255

SHEET NO. S26 OF S35 SHEETS

F.A.P. RTE.	SECTION	COUNTY	TOTAL SHEETS	SHEET NO.
68	(3)BR-3	LASALLE	61	39
			CONTRACT NO. 66A20	
ILLINOIS FED. AID PROJECT				