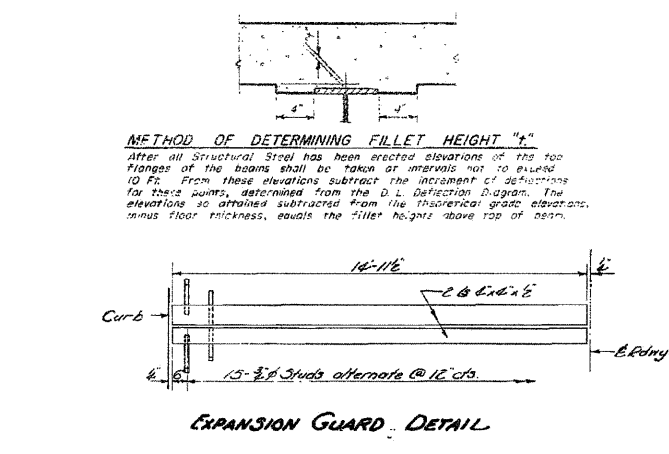
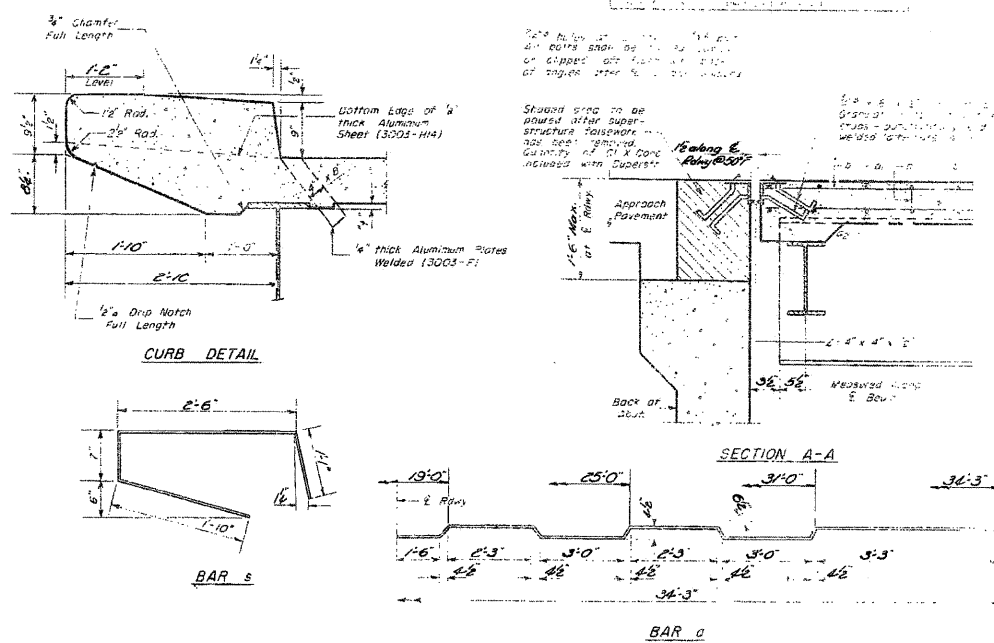
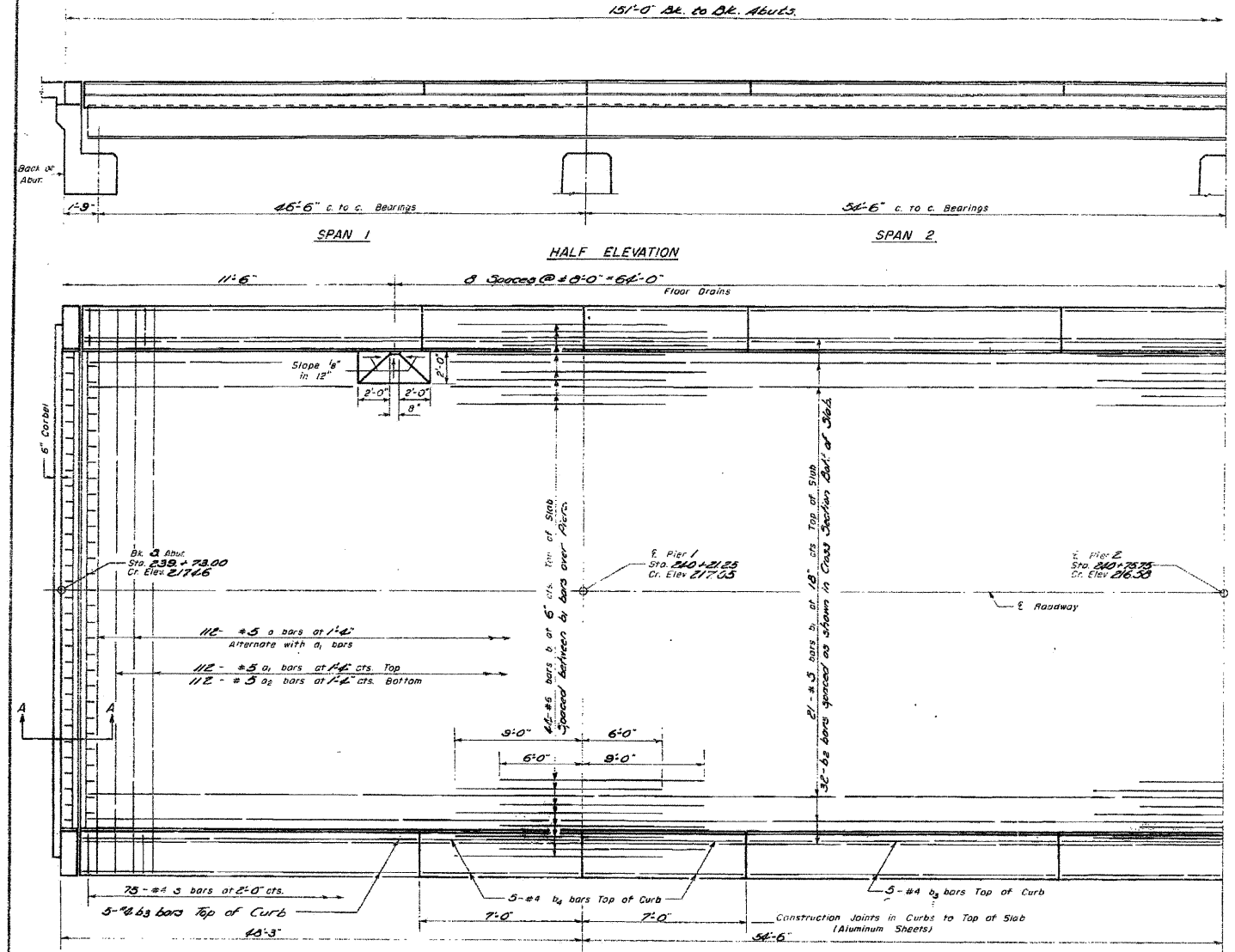


STATE OF ILLINOIS
DEPARTMENT OF PUBLIC WORKS & BUILDINGS
DIVISION OF HIGHWAYS

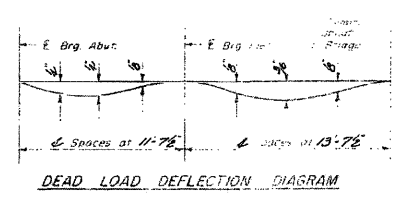
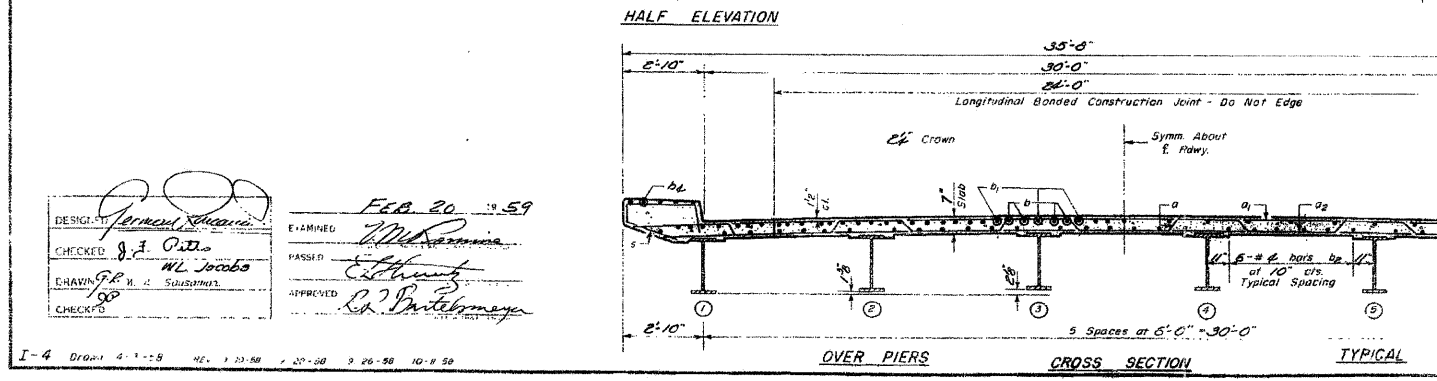
23 388-1 LaSalle 30 18 7



BILL OF MATERIAL

Qty	Size	Length	Notes
2	112	45	35'-11"
2	112	45	34'-3"
2	112	45	31'-9"
2	88	76	15'-0"
5	105	19	30'-6"
2	160	4	30'-6"
2	60	4	20'-6"
2	40	4	6'-9"
5	150	4	6'-0"
2	Class X Expansion	1391	
2	Expansion Bar	12	22,070
2	Structural Steel	12	12,930
2	Angle Plate	12	1

Weight of Rollers, Brackets, Bearing Plates, and other items shown shall be included in structural steel. EST. WEIGHT - 6070 LBS.
*Includes sheeted area on Abutment.



DESIGNED: *J. Jacobs*
CHECKED: *J. Jacobs*
DRAWN: *W. Jacobs*
DATE: 10/20/2011

APPROVED: *W. Jacobs*
DATE: FEB 20, 1959

SUPERSTRUCTURE
PART 04 (R.D.I. Pt. 23) - Sec. 3-BR-1
LASALLE COUNTY
STA. 240+48.5

FOR INFORMATION ONLY