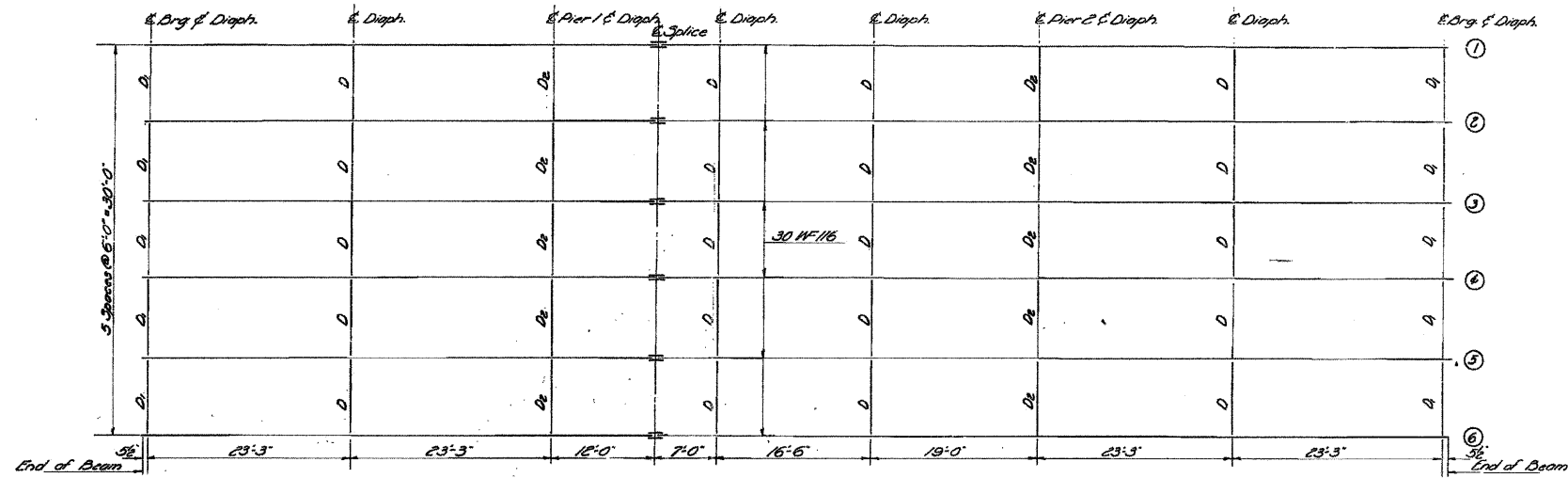
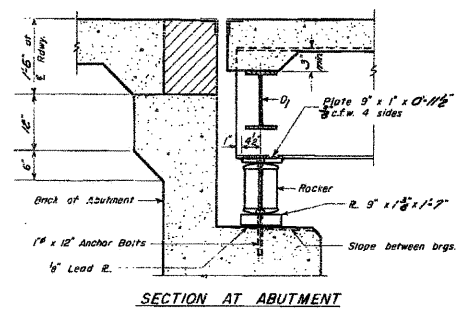


STATE OF ILLINOIS
DEPARTMENT OF PUBLIC WORKS & BUILDINGS
DIVISION OF HIGHWAYS

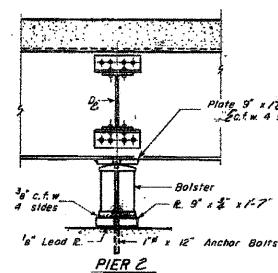
ROUTE NO.	SECTION	STATION	TOTAL SHEETS	SHEET NO.
24	3BR-1	LaSalle	30	19
SHEET 19 OF 30				



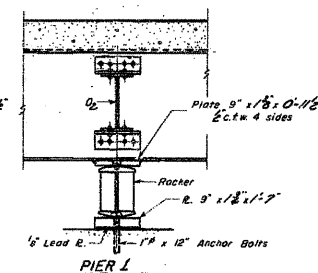
PLAN OF STRUCTURAL STEEL



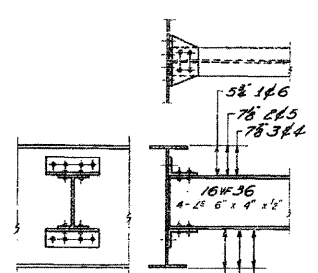
SECTION AT ABUTMENT



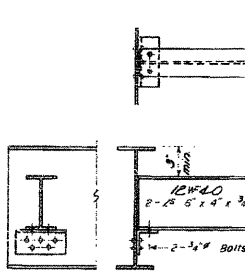
PIER 2



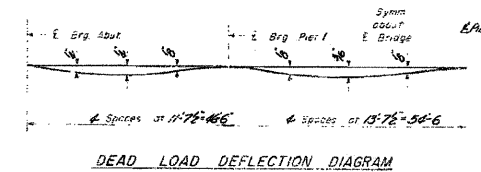
PIER 1



DIAPHRAGM D1



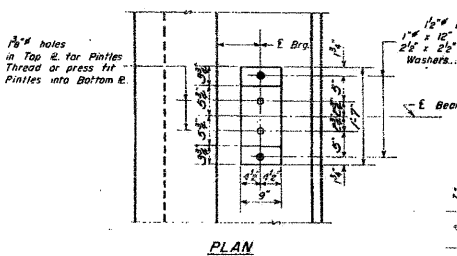
DIAPHRAGM D2



DEAD LOAD DEFLECTION DIAGRAM

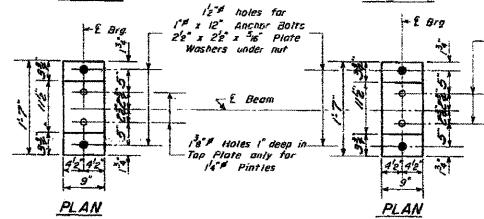
ELEVATION TOP OF BEAMS

Beams	E. Erg. Abut.	E. Pier 1	E. Splice	E. Pier 2	E. Erg. N. Abut.
1C6	216.67	216.77	216.17	215.00	215.40
2C5	216.79	216.89	216.29	215.92	215.52
3C4	216.85	216.65	216.35	215.99	215.58



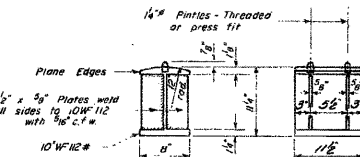
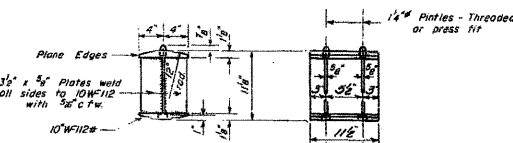
PLAN

DETAIL OF PINTLE

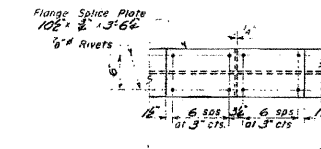


PLAN

DETAIL OF BEARING AT PIER 1 & 2



DETAIL OF BEARING AT PIER 2



DETAIL OF SPLICE

DESIGNED: *[Signature]*
CHECKED: *[Signature]*
DRAWN: G.R. W. A. Soudan
CHECKED: *[Signature]*

EXAMINED: *[Signature]*
PASSED: *[Signature]*
APPROVED: *[Signature]*

STRUCTURAL STEEL
FA. R. 24 (3.0.1. R. 2.3) Sec. 3-BR-1
LASALLE COUNTY
Sta. 240+48.5

I-2 DRAWN 5-10-37

FOR INFORMATION ONLY