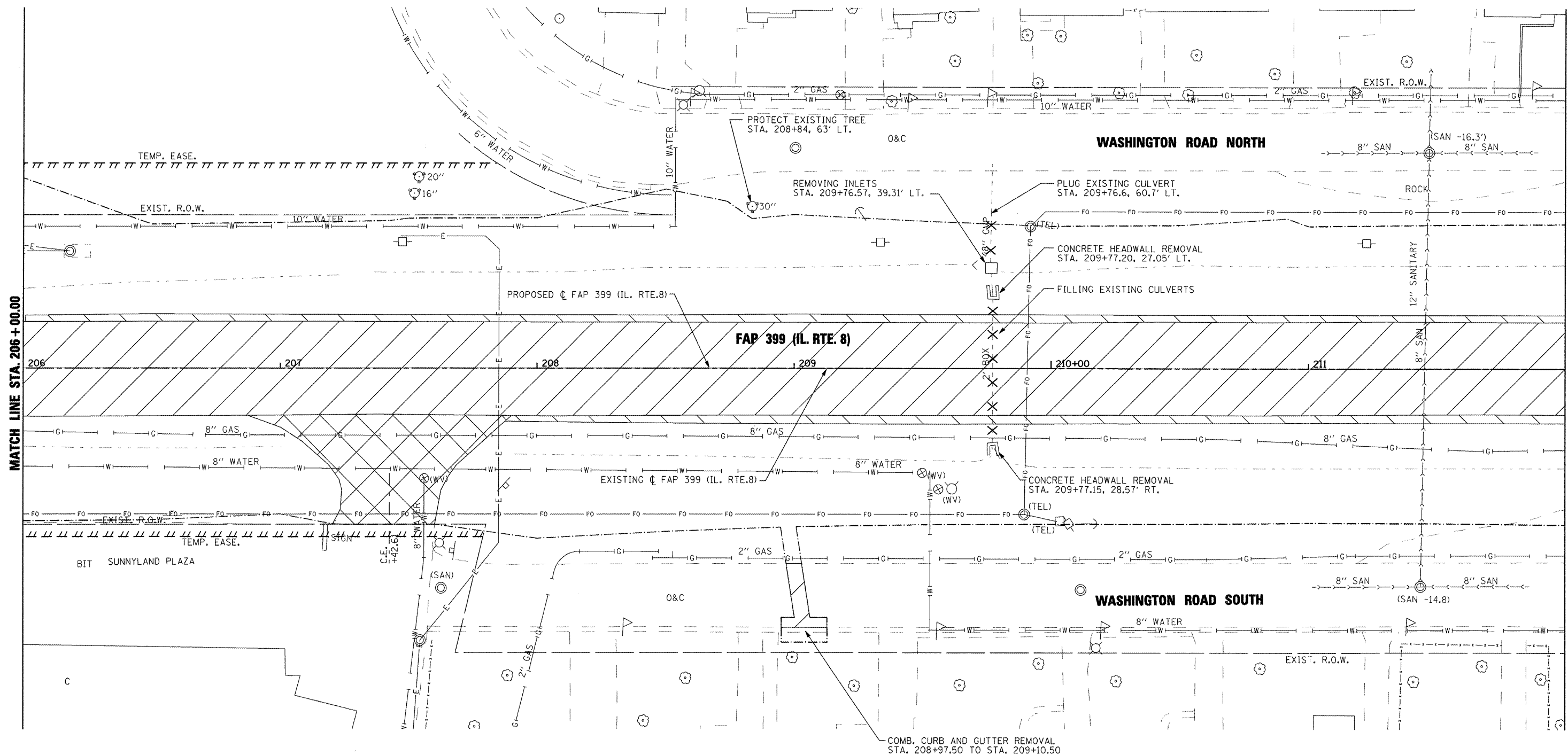
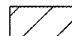
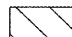
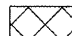

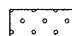
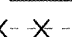



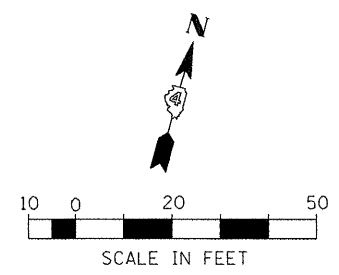
MATCH LINE STA. 206+00.00

MATCH LINE STA. 212+00.00



LEGEND

-  PAVEMENT REMOVAL
-  BITUMINOUS CONC. SHOULDER REMOVAL
-  DRIVEWAY PAVEMENT REMOVAL
-  HMA SURFACE REMOVAL - BUTT JOINT
-  REMOVAL AND DISPOSAL OF UNSUITABLE MATERIAL
-  PIPE CULVERT REMOVAL
-  TREE REMOVAL



FILE NAME =	USER NAME = IDOT	DESIGNED -	REVISED -
x:\pro\jacta\200803566\dgn\04-Rte8-shr-RM-2.dgn		DRAWN -	REVISED -
PLOT SCALE = 40,004 FT / IN.		CHECKED -	REVISED -
PLOT DATE = 10/21/2011		DATE = 10-21-11	REVISED -

**STATE OF ILLINOIS
DEPARTMENT OF TRANSPORTATION**

**FAP 399 (IL. RTE. 8)
EXISTING AND REMOVAL PLANS**

SCALE: AS SHOWN SHEET NO. OF SHEETS STA. 206+00.00 TO STA. 212+00.00

F.A.P. RTE. 399	SECTION 36 R-7	COUNTY TAZEWELL	TOTAL SHEETS 390	SHEET NO. 42
CONTRACT NO. 68370				ILLINOIS FED. AID PROJECT