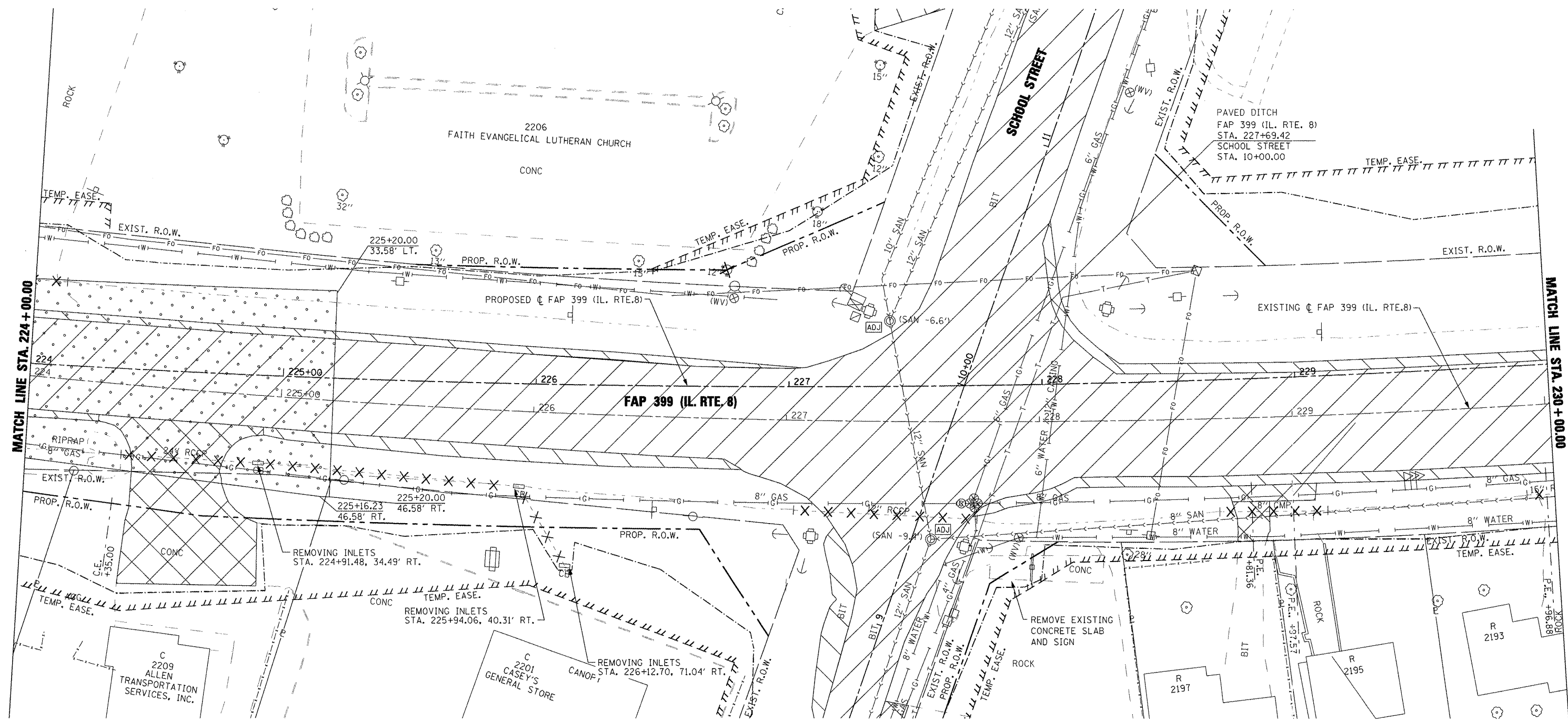
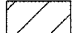








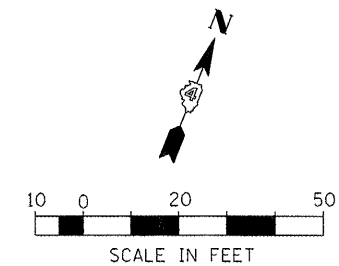
SEE SHEET 53 FOR CONTINUATION



SEE SHEET 53 FOR CONTINUATION

LEGEND

-  PAVEMENT REMOVAL
-  BITUMINOUS CONC. SHOULDER REMOVAL
-  DRIVEWAY PAVEMENT REMOVAL
-  HMA SURFACE REMOVAL - BUTT JOINT
-  REMOVAL AND DISPOSAL OF UNSUITABLE MATERIAL
-  PIPE CULVERT REMOVAL
-  TREE REMOVAL



FILE NAME =	USER NAME = IDOT	DESIGNED -	REVISED -
\\prj\projects\200803566\dgn\04-Rte8-shft-RM-5.dgn		DRAWN -	REVISED -
PLOT SCALE = 40.004 FT / IN.		CHECKED -	REVISED -
PLOT DATE = 10/21/2011		DATE = 10-21-11	REVISED -

**STATE OF ILLINOIS
DEPARTMENT OF TRANSPORTATION**

FAP 399 (IL. RTE. 8) EXISTING AND REMOVAL PLANS			
SCALE: AS SHOWN	SHEET NO. OF	SHEETS	STA. 224+00.00 TO STA. 230+00.00

F.A.P. RTE. 399	SECTION 36 R-7	COUNTY TAZEWELL	TOTAL SHEETS 390	SHEET NO. 45
CONTRACT NO. 68370				
ILLINOIS FED. AID PROJECT				