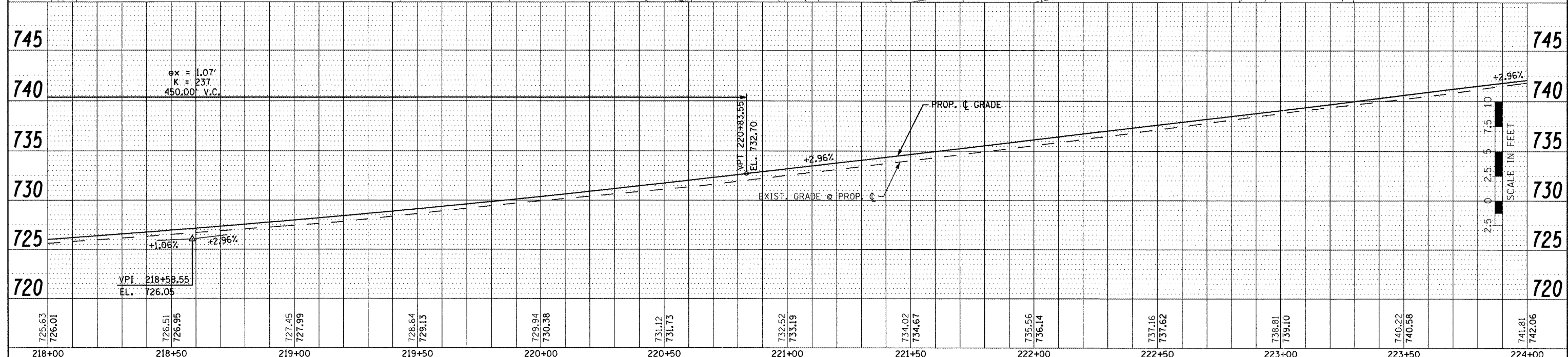
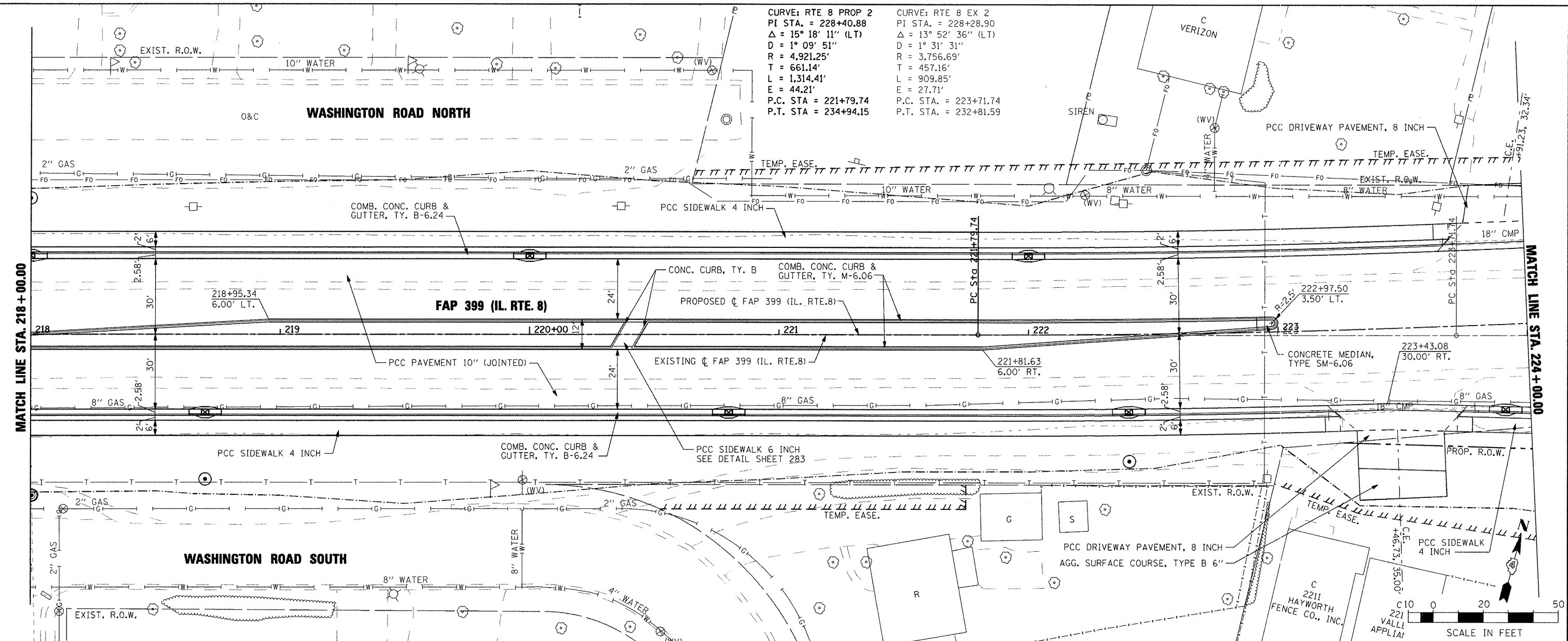


PLAN
 SURVEYED
 ALIGNED
 CHECKED
 RT. OF WAY
 NO.
 DATE

PROFILE
 SURVEYED
 GRADES
 CHECKED
 B.M. NOTED
 STRUCTURE
 NOTATIONS
 CIPRO
 NO.
 DATE

CURVE: RTE 8 PROP 2
 PI STA. = 228+40.88
 $\Delta = 15^\circ 18' 11''$ (LT)
 $D = 1^\circ 09' 51''$
 $R = 4,921.25'$
 $T = 661.14'$
 $L = 1,314.41'$
 $E = 44.21'$
 P.C. STA. = 221+79.74
 P.T. STA. = 234+94.15

CURVE: RTE 8 EX 2
 PI STA. = 228+28.90
 $\Delta = 13^\circ 52' 36''$ (LT)
 $D = 1^\circ 31' 31''$
 $R = 3,756.69'$
 $T = 457.16'$
 $L = 909.85'$
 $E = 27.71'$
 P.C. STA. = 223+71.74
 P.T. STA. = 232+81.59



FILE NAME =	USER NAME = IDOT	DESIGNED -	REVISED -	STATE OF ILLINOIS DEPARTMENT OF TRANSPORTATION	FAP 399 (IL. RTE. 8) ROADWAY PLAN AND PROFILE	F.A.P. RTE. 399	SECTION 36 R-7	COUNTY TAZEWELL	TOTAL SHEETS 390	SHEET NO. 57	CONTRACT NO. 68370
x:\projects\200803566\dgn\14-Rse8-sht-PLN-PRF-4.dgn		DRAWN -	REVISED -								
PLOT SCALE = 40.0024' / IN.		CHECKED -	REVISED -								
PLOT DATE = 10/21/2011		DATE = 10-21-11	REVISED -								

SCALE: AS SHOWN SHEET NO. OF SHEETS STA. 218+00.00 TO STA. 224+00.00 ILLINOIS FED. AID PROJECT