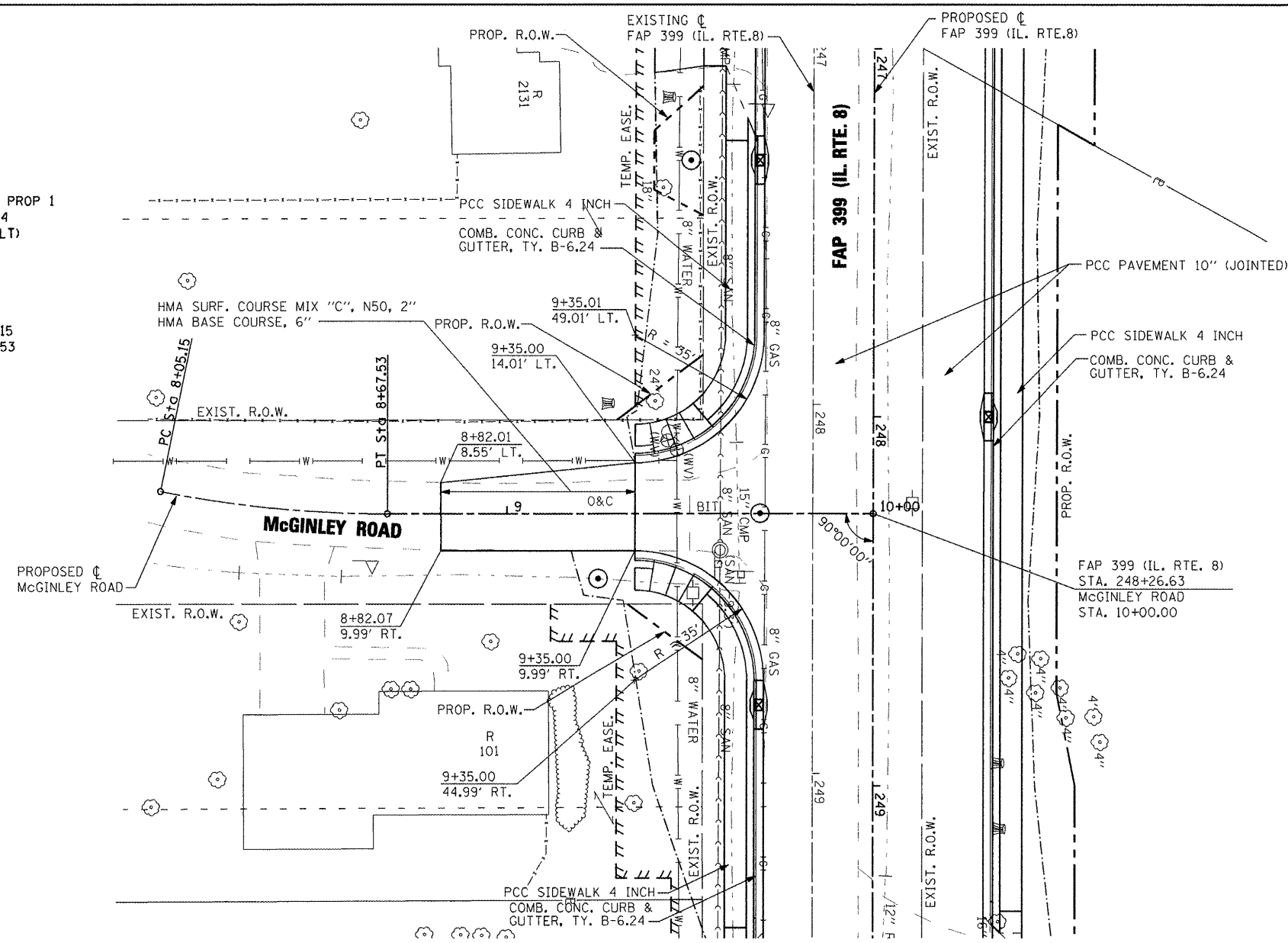
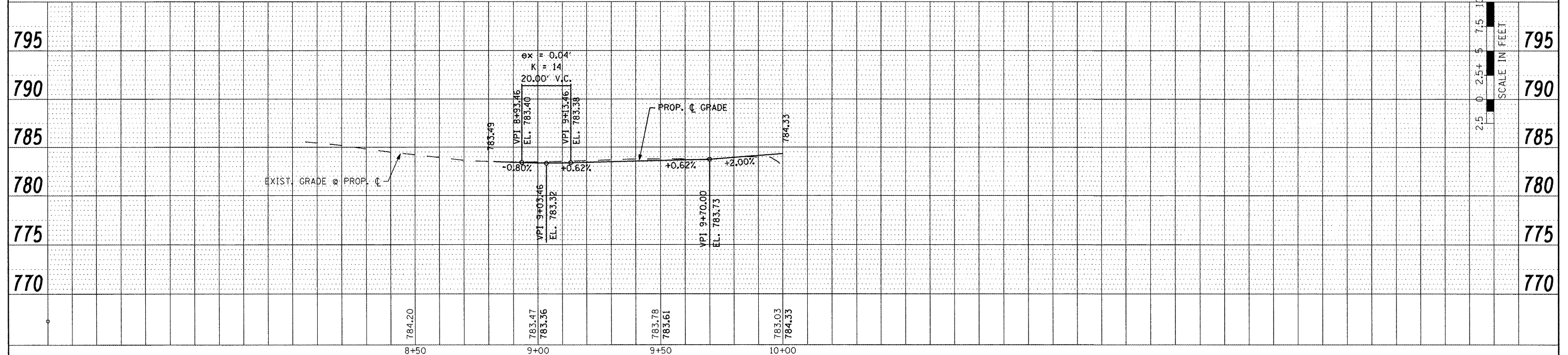
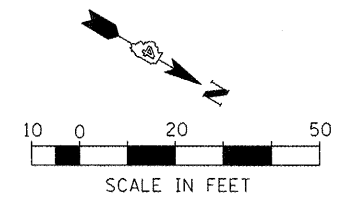


CURVE: MCGINLEY PROP 1
 PI STA. = 8+36.44
 $\Delta = 11^\circ 21' 47''$ (LT)
 $D = 18^\circ 12' 58''$
 $R = 314.53'$
 $T = 31.29'$
 $L = 62.38'$
 $E = 1.55'$
 P.C. STA = 8+05.15
 P.T. STA = 8+67.53



SEE IL. ROUTE 8 PLAN AND PROFILES FOR ADDITIONAL INFORMATION



DATE	
BY	
PLAN	
NOTE BOOK NO.	
SURVEYED	
ALIGNED	
CHECKED	
PT. OF WAY CHECKED	
ROAD FILE NAME	

DATE	
BY	
PROFILE	
NOTE BOOK NO.	
GRADES CHECKED	
B.M. NOTED	
STRUCTURE NOTATIONS CHECKED	

FILE NAME =	USER NAME = IDOT	DESIGNED -	REVISED -	STATE OF ILLINOIS DEPARTMENT OF TRANSPORTATION	FAP 399 (IL. RTE. 8) MCGINLEY ROAD - ROADWAY PLAN AND PROFILE	F.A.P. RTE. 399	SECTION 36 R-7	COUNTY TAZEWELL	TOTAL SHEETS 390	SHEET NO. 71		
x:\projects\208893566\dgn\04-RtaB-sht-PLN	PRF-McGinley.dgn	DRAWN -	REVISED -			SCALE: AS SHOWN	SHEET NO. OF SHEETS	STA. 8+05.15 TO STA. 10+00.00	ILLINOIS FED. AID PROJECT			
PLOT SCALE = 40.00' / IN.		CHECKED -	REVISED -									
PLOT DATE = 10/21/2011		DATE = 10-21-11	REVISED -									