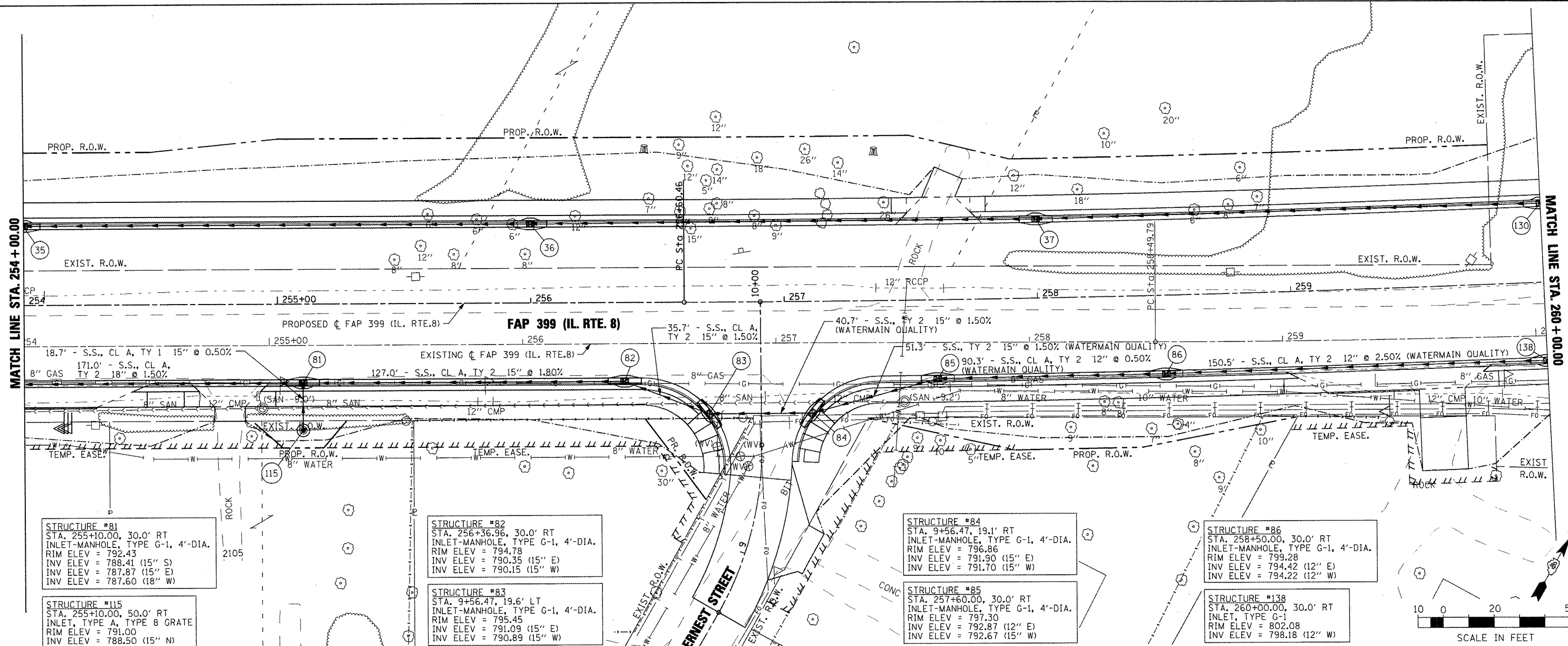


DATE	
BY	
REVISIONS	
NO.	
DESCRIPTION	
DATE	
BY	
REVISIONS	
NO.	
DESCRIPTION	
DATE	
BY	
REVISIONS	
NO.	
DESCRIPTION	

DATE	
BY	
REVISIONS	
NO.	
DESCRIPTION	
DATE	
BY	
REVISIONS	
NO.	
DESCRIPTION	
DATE	
BY	
REVISIONS	
NO.	
DESCRIPTION	

MATCH LINE STA. 254+00.00

MATCH LINE STA. 260+00.00



STRUCTURE #81  
STA. 255+10.00, 30.0' RT  
INLET-MANHOLE, TYPE G-1, 4'-DIA.  
RIM ELEV = 792.43  
INV ELEV = 788.41 (15" S)  
INV ELEV = 787.87 (15" E)  
INV ELEV = 787.60 (18" W)

STRUCTURE #82  
STA. 256+36.96, 30.0' RT  
INLET-MANHOLE, TYPE G-1, 4'-DIA.  
RIM ELEV = 794.78  
INV ELEV = 790.35 (15" E)  
INV ELEV = 790.15 (15" W)

STRUCTURE #115  
STA. 255+10.00, 50.0' RT  
INLET, TYPE A, TYPE 8 GRATE  
RIM ELEV = 791.00  
INV ELEV = 788.50 (15" N)

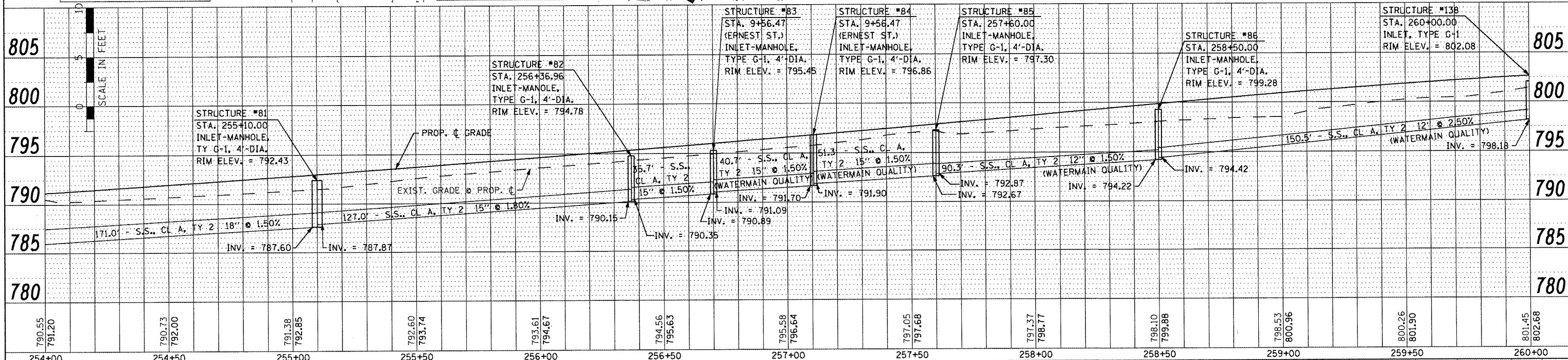
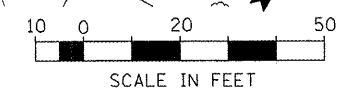
STRUCTURE #83  
STA. 9+56.47, 19.6' LT  
INLET-MANHOLE, TYPE G-1, 4'-DIA.  
RIM ELEV = 795.45  
INV ELEV = 791.09 (15" E)  
INV ELEV = 790.89 (15" W)

STRUCTURE #84  
STA. 9+56.47, 19.1' RT  
INLET-MANHOLE, TYPE G-1, 4'-DIA.  
RIM ELEV = 796.86  
INV ELEV = 791.90 (15" E)  
INV ELEV = 791.70 (15" W)

STRUCTURE #85  
STA. 257+60.00, 30.0' RT  
INLET-MANHOLE, TYPE G-1, 4'-DIA.  
RIM ELEV = 797.30  
INV ELEV = 792.87 (12" E)  
INV ELEV = 792.67 (15" W)

STRUCTURE #86  
STA. 258+50.00, 30.0' RT  
INLET-MANHOLE, TYPE G-1, 4'-DIA.  
RIM ELEV = 799.28  
INV ELEV = 794.42 (12" E)  
INV ELEV = 794.22 (12" W)

STRUCTURE #138  
STA. 260+00.00, 30.0' RT  
INLET, TYPE G-1  
RIM ELEV = 802.08  
INV ELEV = 798.18 (12" W)



FILE NAME =	USER NAME = IOOT	DESIGNED -	REVISED -	FAP 399 (IL RTE. 8)				F.A. RTE.	SECTION	COUNTY	TOTAL SHEETS	SHEET NO.
x:\proj\jct\200803566\dgn\04-Rte8-sht-DRAIN-10_SOUTH.dgn		DRAWN -	REVISED -	DRAINAGE PLAN AND PROFILE - SOUTH				399	36 R-7	TAZEWELL	390	198
PLOT SCALE = 48.0000 "/td> <td></td> <td>CHECKED -</td> <td>REVISED -</td> <td colspan="4">SCALE:</td> <td colspan="5">CONTRACT NO. 68370</td>		CHECKED -	REVISED -	SCALE:				CONTRACT NO. 68370				
PLOT DATE = 10/21/2011		DATE -	REVISED -	SHEET NO. OF SHEETS STA. 254+00.00 TO STA. 260+00.00				ILLINOIS FED. AID PROJECT				

STATE OF ILLINOIS  
DEPARTMENT OF TRANSPORTATION