

STRUCTURE #142
 STA. 266+50.00, 34.79' RT
 INLET, TYPE G-1
 RIM ELEV = 802.11
 INV ELEV = 797.77 (12" W)
 INV ELEV = 797.57 (12" E)

STRUCTURE #143
 STA. 267+40.00, 34.43' RT
 INLET, TYPE G-1
 RIM ELEV = 801.84
 INV ELEV = 797.12 (12" W)
 INV ELEV = 796.92 (15" E)

STRUCTURE #144
 STA. 268+30.00, 36.3' RT
 INLET, TYPE G-1
 RIM ELEV = 801.57
 INV ELEV = 796.47 (15" W)
 INV ELEV = 796.27 (15" E)

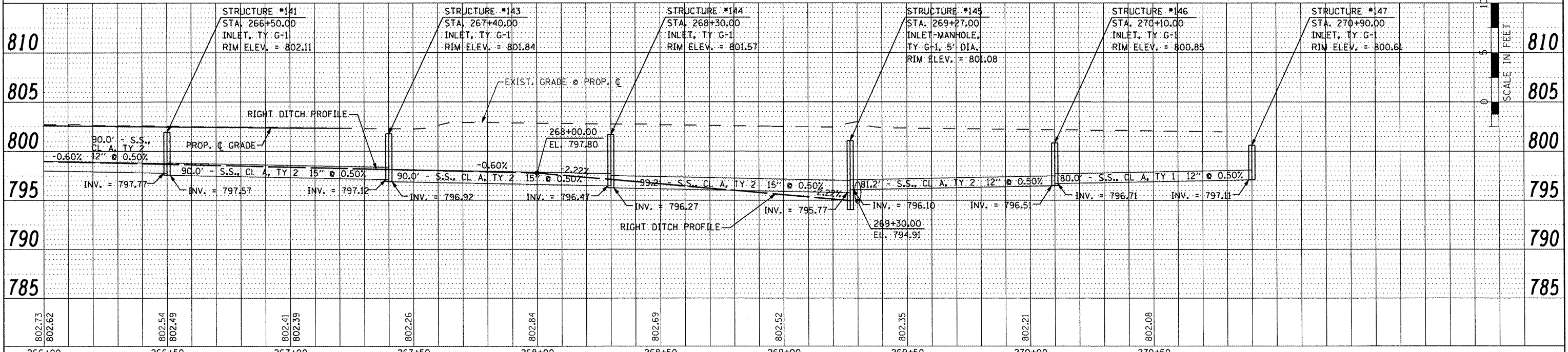
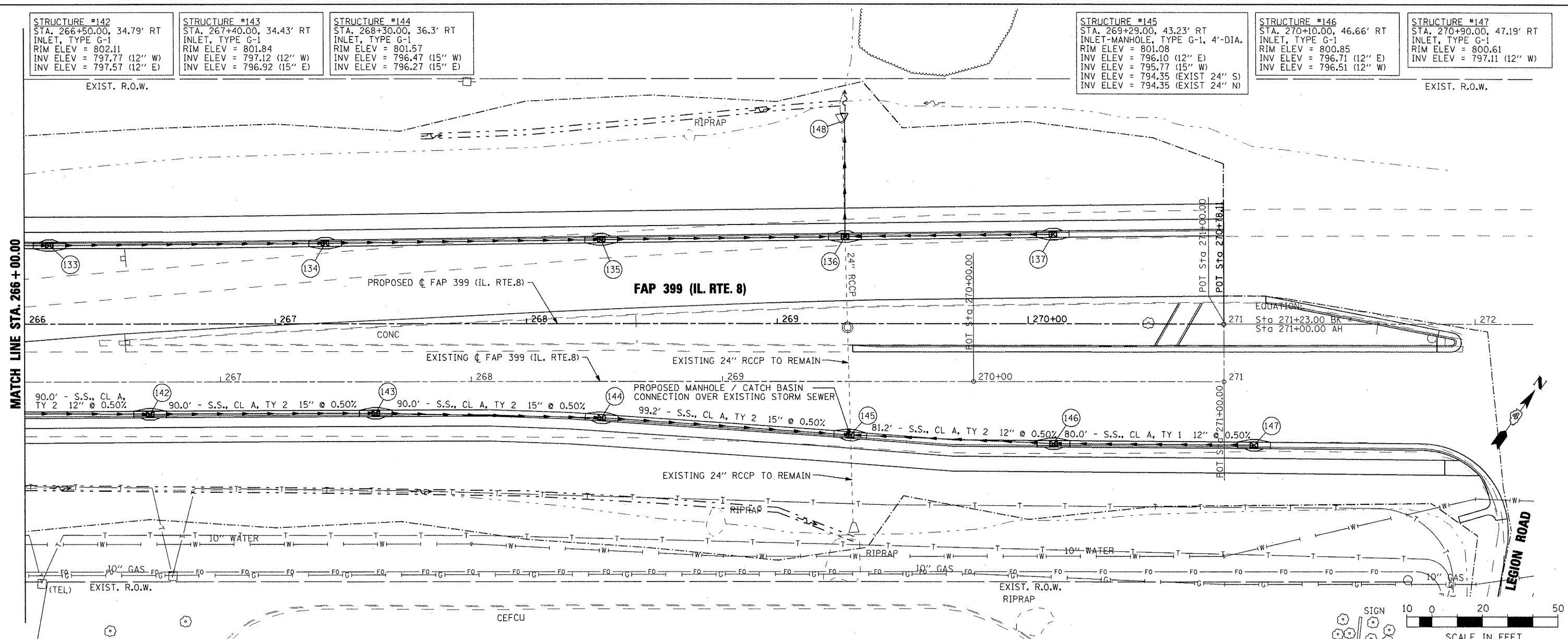
STRUCTURE #145
 STA. 269+29.00, 43.23' RT
 INLET-MANHOLE, TYPE G-1, 4'-DIA.
 RIM ELEV = 801.08
 INV ELEV = 796.10 (12" E)
 INV ELEV = 795.77 (15" W)
 INV ELEV = 794.35 (EXIST 24" S)
 INV ELEV = 794.35 (EXIST 24" N)

STRUCTURE #146
 STA. 270+10.00, 46.66' RT
 INLET, TYPE G-1
 RIM ELEV = 800.85
 INV ELEV = 796.71 (12" E)
 INV ELEV = 796.51 (12" W)

STRUCTURE #147
 STA. 270+90.00, 47.19' RT
 INLET, TYPE G-1
 RIM ELEV = 800.61
 INV ELEV = 797.11 (12" W)

DATE	
BY	
REVISIONS	
NO.	
DESCRIPTION	
DATE	
BY	
REVISIONS	
NO.	
DESCRIPTION	
DATE	
BY	
REVISIONS	
NO.	
DESCRIPTION	
DATE	
BY	
REVISIONS	
NO.	
DESCRIPTION	

DATE	
BY	
REVISIONS	
NO.	
DESCRIPTION	
DATE	
BY	
REVISIONS	
NO.	
DESCRIPTION	
DATE	
BY	
REVISIONS	
NO.	
DESCRIPTION	



FILE NAME =	USER NAME = IDOT	DESIGNED -	REVISED -	FAP 399 (IL. RTE. 8)				F.A. RTE.	SECTION	COUNTY	TOTAL SHEETS	SHEET NO.
x:\proj\secta\288883566\dm\04-Rte8-shr-DRAIN-12_SOUTH.dgn		DRAWN -	REVISED -	DRAINAGE PLAN AND PROFILE - SOUTH				399	36 R-7	TAZEWELL	390	200
PLOT SCALE = 48.0000' / IN.		CHECKED -	REVISED -	SCALE: AS SHOWN SHEET NO. OF SHEETS STA. 266+00.00 TO STA. 270+78.11				CONTRACT NO. 68370				
PLOT DATE = 10/21/2011		DATE -	REVISED -					ILLINOIS FED. AID PROJECT				

STATE OF ILLINOIS
 DEPARTMENT OF TRANSPORTATION