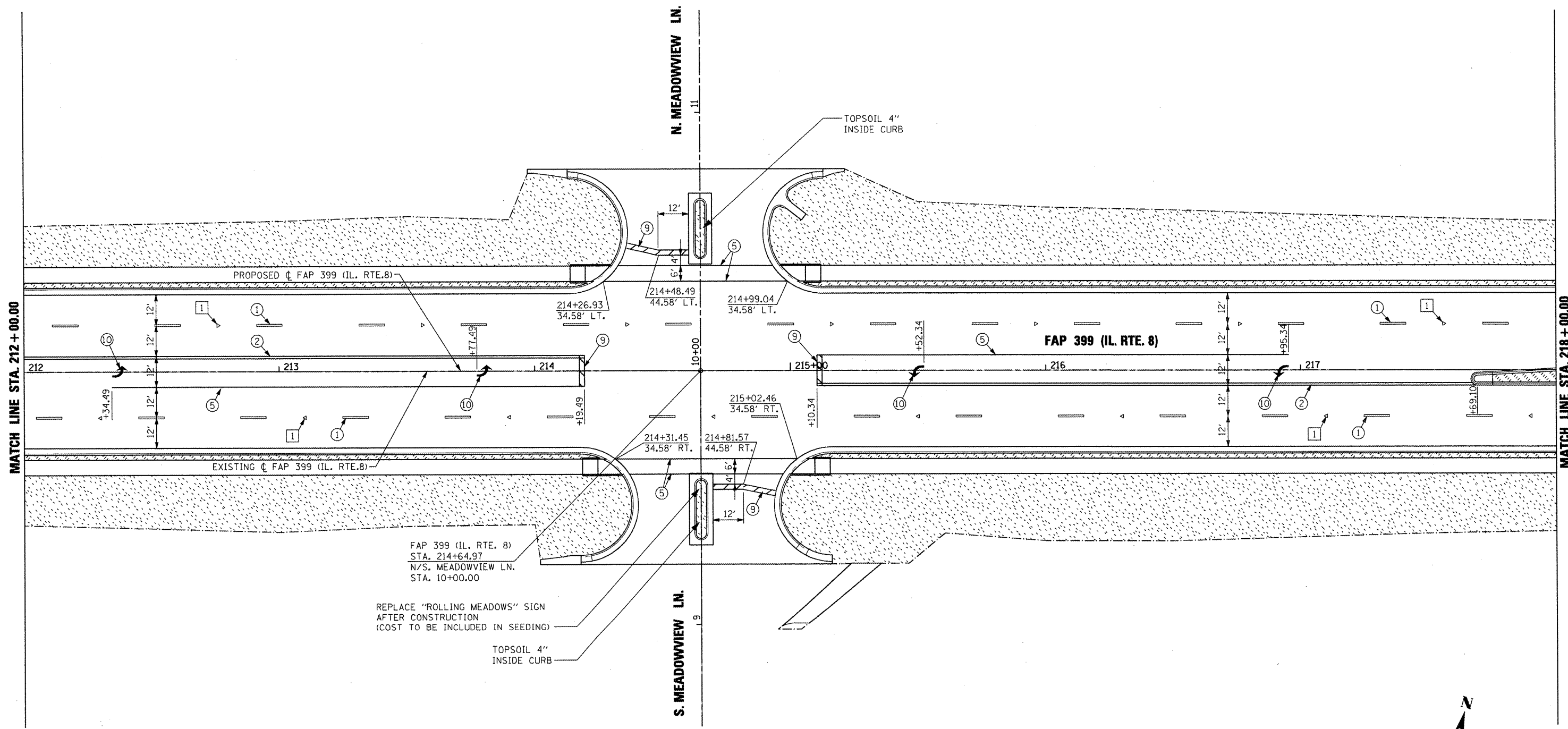


MATCH LINE STA. 212+00.00

MATCH LINE STA. 218+00.00





FAP 399 (IL. RTE. 8)
 STA. 214+64.97
 N/S. MEADOWVIEW LN.
 STA. 10+00.00

REPLACE "ROLLING MEADOWS" SIGN
 AFTER CONSTRUCTION
 (COST TO BE INCLUDED IN SEEDING)

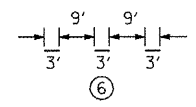
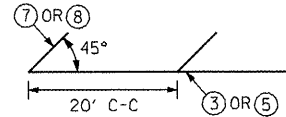
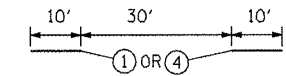
TOPSOIL 4"
 INSIDE CURB

LANDSCAPING LEGEND

-  SEEDING, CLASS 2A
-  SODDING, SALT TOLERANT

PAVEMENT MARKING LEGEND

- ① PREFORMED PLASTIC PAVEMENT MARKING - LINE 6" WHITE SKIP DASH
- ② EPOXY PAVEMENT MARKING - LINE 4" YELLOW SOLID (DOUBLE LINE)
- ③ EPOXY PAVEMENT MARKING - LINE 4" YELLOW SOLID
- ④ EPOXY PAVEMENT MARKING - LINE 4" YELLOW SKIP DASH
- ⑤ EPOXY PAVEMENT MARKING - LINE 8" WHITE SOLID
- ⑥ EPOXY PAVEMENT MARKING - LINE 8" WHITE SKIP DASH
- ⑦ EPOXY PAVEMENT MARKING - LINE 12" YELLOW SOLID
- ⑧ EPOXY PAVEMENT MARKING - LINE 12" WHITE SOLID
- ⑨ EPOXY PAVEMENT MARKING - LINE 24" WHITE SOLID (STOP BAR)
- ⑩ EPOXY PAVEMENT MARKING - LETTERS AND SYMBOLS

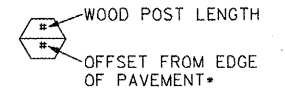


1. PAVEMENT MARKINGS SHALL BE IN ACCORDANCE WITH DISTRICT CADD DETAILS - STANDARD 780001.

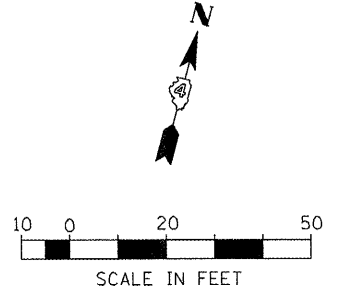
RAISED REFLECTIVE PAVEMENT MARKERS (RRPM) LEGEND

- ① Δ ONE-WAY CRYSTAL MARKER AT 80' CENTERS
- ② ◆ TWO-WAY AMBER MARKER AT 40' CENTERS

SIGN POST LEGEND



• SEE STANDARD 720006 FOR OFFSET



FILE NAME =	USER NAME = ID07	DESIGNED -	REVISED -
x:\projects\200803566\dgn\04-Rte8-shr-PK-3.dgn		DRAWN -	REVISED -
		CHECKED -	REVISED -
		DATE = 10-21-11	REVISED -

**STATE OF ILLINOIS
 DEPARTMENT OF TRANSPORTATION**

**FAP 399 (IL. RTE. 8)
 PAVEMENT MARKING & LANDSCAPING PLANS**

SCALE: AS SHOWN SHEET NO. OF SHEETS STA. 212+00.00 TO STA. 218+00.00

F.A.P. RTE. 399	SECTION 36 R-7	COUNTY TAZEWELL	TOTAL SHEETS 390	SHEET NO. 241
			CONTRACT NO. 68370	
[ILLINOIS] FED. AID PROJECT				