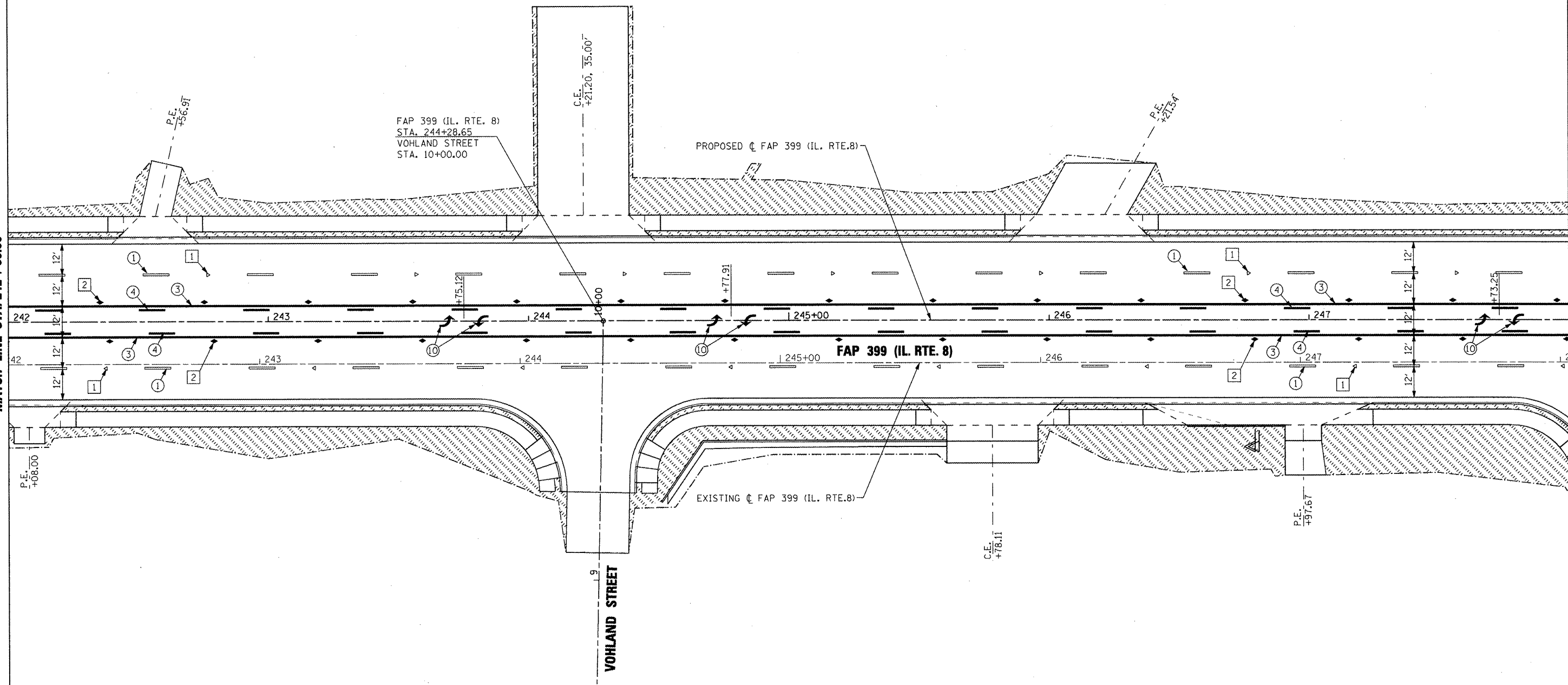
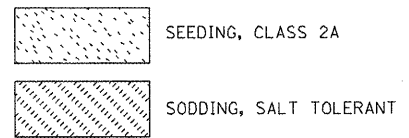


MATCH LINE STA. 242+00.00

MATCH LINE STA. 248+00.00

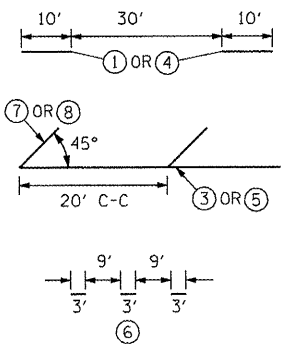


LANDSCAPING LEGEND



PAVEMENT MARKING LEGEND

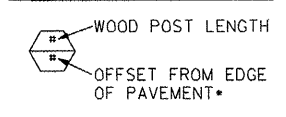
- ① PREFORMED PLASTIC PAVEMENT MARKING - LINE 6" WHITE SKIP DASH
- ② EPOXY PAVEMENT MARKING - LINE 4" YELLOW SOLID (DOUBLE LINE)
- ③ EPOXY PAVEMENT MARKING - LINE 4" YELLOW SOLID
- ④ EPOXY PAVEMENT MARKING - LINE 4" YELLOW SKIP DASH
- ⑤ EPOXY PAVEMENT MARKING - LINE 8" WHITE SOLID
- ⑥ EPOXY PAVEMENT MARKING - LINE 8" WHITE SKIP DASH
- ⑦ EPOXY PAVEMENT MARKING - LINE 12" YELLOW SOLID
- ⑧ EPOXY PAVEMENT MARKING - LINE 12" WHITE SOLID
- ⑨ EPOXY PAVEMENT MARKING - LINE 24" WHITE SOLID (STOP BAR)
- ⑩ EPOXY PAVEMENT MARKING - LETTERS AND SYMBOLS



RAISED REFLECTIVE PAVEMENT MARKERS (RRPM) LEGEND

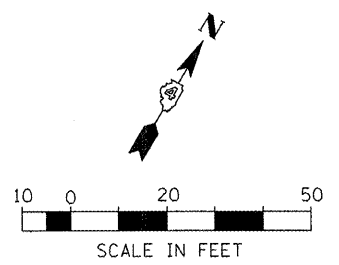
- ① Δ ONE-WAY CRYSTAL MARKER AT 80' CENTERS
- ② ◆ TWO-WAY AMBER MARKER AT 40' CENTERS

SIGN POST LEGEND



1. PAVEMENT MARKINGS SHALL BE IN ACCORDANCE WITH DISTRICT CADD DETAILS - STANDARD 780001.

* SEE STANDARD 720006 FOR OFFSET



FILE NAME =	USER NAME = IDOT	DESIGNED -	REVISED -	STATE OF ILLINOIS DEPARTMENT OF TRANSPORTATION	FAP 399 (IL. RTE. 8) PAVEMENT MARKING & LANDSCAPING PLANS			F.A.P. RTE.	SECTION	COUNTY	TOTAL SHEETS	SHEET NO.	
xi\projects\200803566\dgn\D4-Rte8-sht-PK-8.dgn		DRAWN -	REVISED -		SCALE: AS SHOWN	SHEET NO.	OF	SHEETS	399	36 R-7	TAZEWELL	390	246
		CHECKED -	REVISED -		STA. 242+00.00	TO	STA. 248+00.00	CONTRACT NO. 68370					
		DATE - 10-21-11	REVISED -		ILLINOIS FED. AID PROJECT								