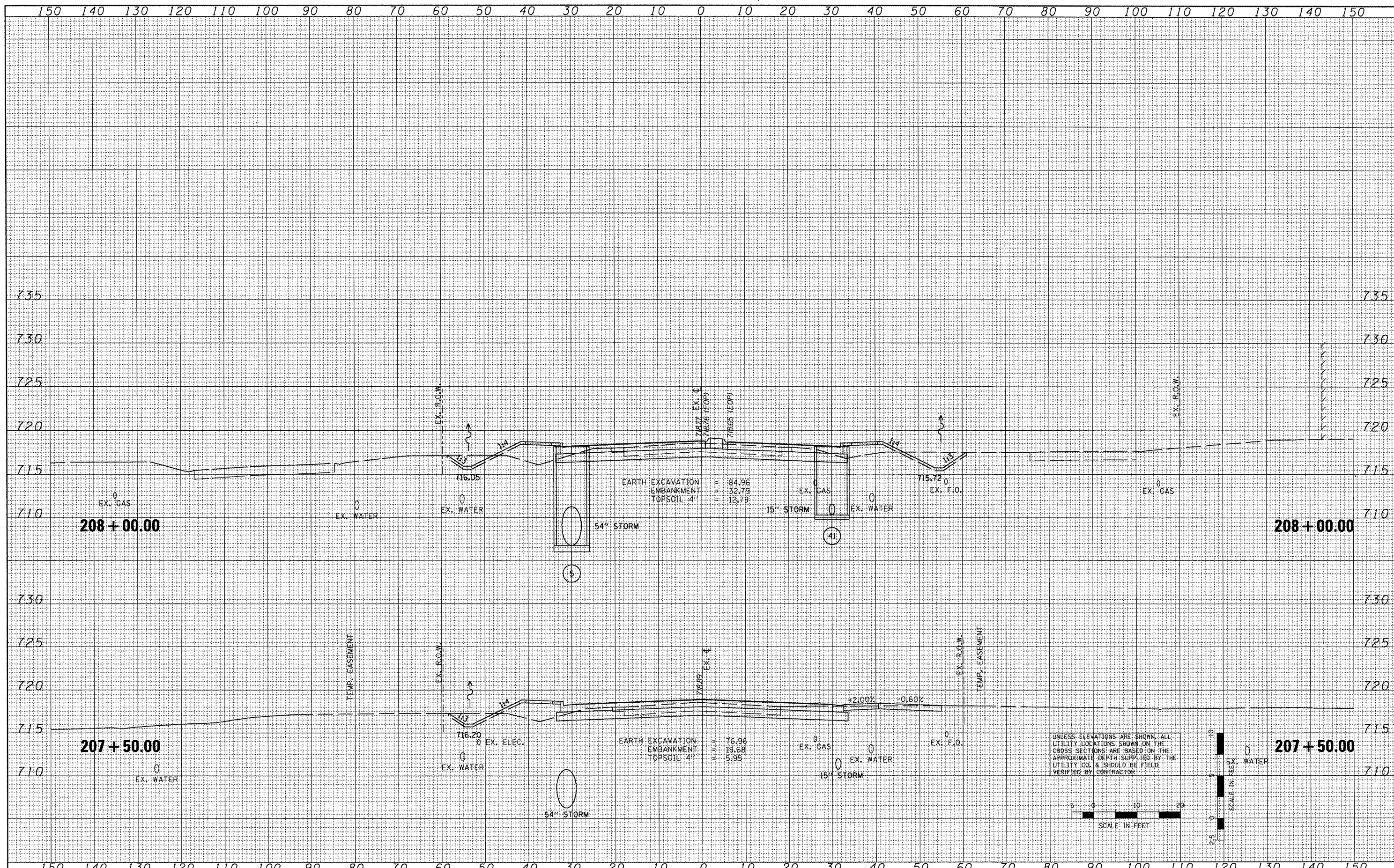


FINAL SURVEY	SURVEYED	DATE
NOTE BOOK	PLOTTED	BY
NO.	TEMPLATE	
	AREAS CHECKED	

ORIGINAL SURVEY	SURVEYED	DATE
NOTE BOOK	PLOTTED	BY
NO.	TEMPLATE	
	AREAS CHECKED	



UNLESS ELEVATIONS ARE SHOWN, ALL UTILITY LOCATIONS SHOWN ON THE CROSS SECTIONS ARE BASED ON THE APPROXIMATE DEPTH SUPPLIED BY THE UTILITY CO. & SHOULD BE FIELD VERIFIED BY CONTRACTOR

FILE NAME -	USER NAME - I001	DESIGNED -	REVISED -	<b>STATE OF ILLINOIS</b> <b>DEPARTMENT OF TRANSPORTATION</b>	<b>FAP 399 (IL RTE. 8)</b> <b>CROSS SECTIONS</b>	SCALE: SHEET NO. OF SHEETS STA. 207+50.00 TO STA. 208+00.00	<table border="1"> <tr><td>F.A.P. RTE.</td><td>SECTION</td><td>COUNTY</td><td>TOTAL SHEETS</td><td>SHEET NO.</td></tr> <tr><td>399</td><td>36 R-7</td><td>TAZEWELL</td><td>390</td><td>311</td></tr> <tr><td colspan="5">CONTRACT NO. 68370</td></tr> <tr><td colspan="5">ILLINOIS FED. AID PROJECT</td></tr> </table>	F.A.P. RTE.	SECTION	COUNTY	TOTAL SHEETS	SHEET NO.	399	36 R-7	TAZEWELL	390	311	CONTRACT NO. 68370					ILLINOIS FED. AID PROJECT				
F.A.P. RTE.	SECTION	COUNTY	TOTAL SHEETS					SHEET NO.																			
399	36 R-7	TAZEWELL	390					311																			
CONTRACT NO. 68370																											
ILLINOIS FED. AID PROJECT																											
PROJECTS\200803566\dgn\gpk\X5-IL-RTE-sheets.dgn		DRAWN -	REVISED -																								
PLOT SCALE = 20.7420' / IN.		CHECKED -	REVISED -																								
PLOT DATE = 10/21/2011		DATE = 10-21-11	REVISED -																								