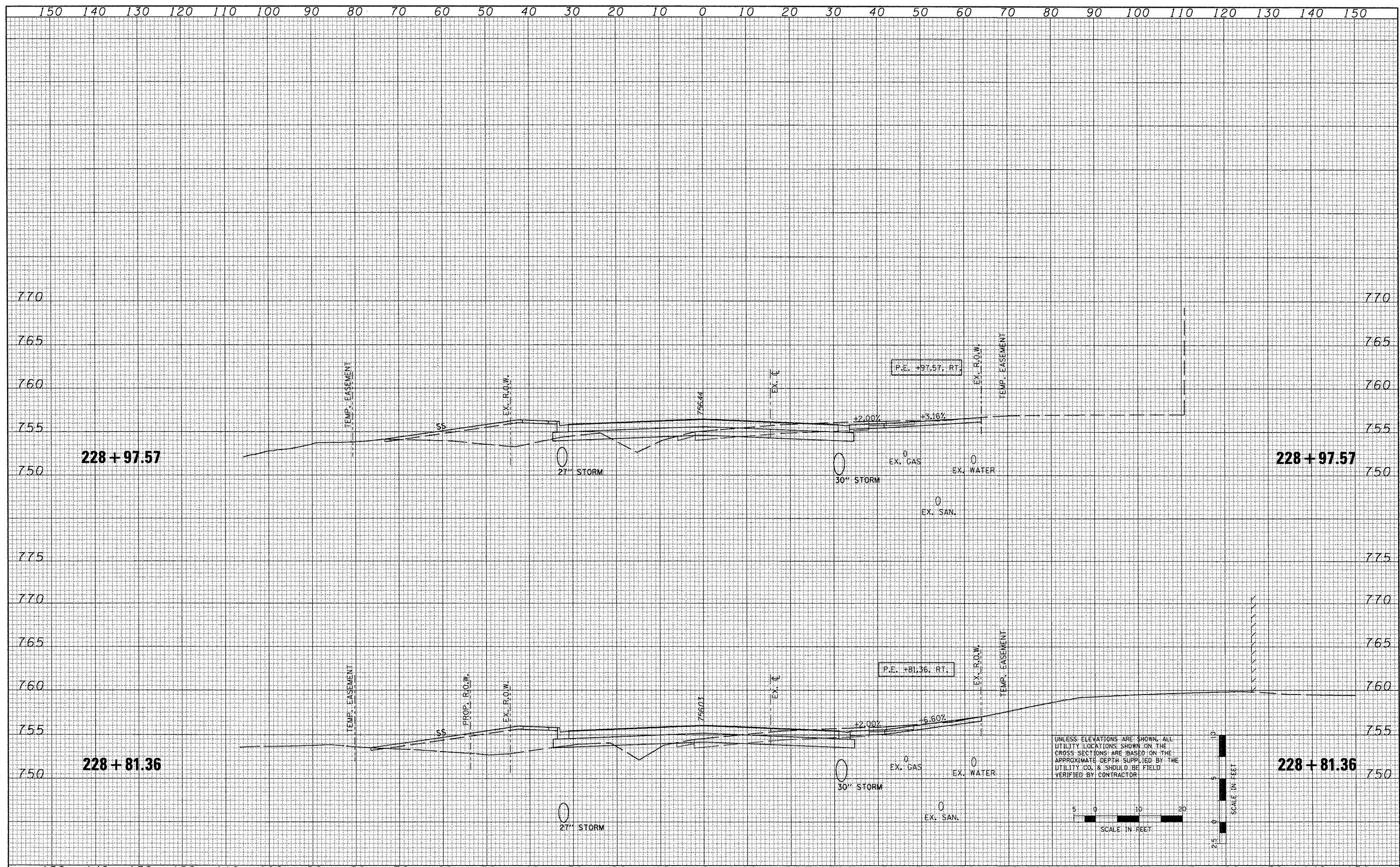
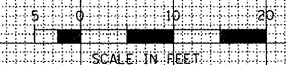


|                 |  |
|-----------------|--|
| DATE            |  |
| BY              |  |
| ORIGINAL SURVEY |  |
| SURVEYED        |  |
| PLOTTED         |  |
| NOTE BOOK       |  |
| AREAS CHECKED   |  |
| NO.             |  |

|                 |  |
|-----------------|--|
| DATE            |  |
| BY              |  |
| ORIGINAL SURVEY |  |
| SURVEYED        |  |
| PLOTTED         |  |
| NOTE BOOK       |  |
| AREAS CHECKED   |  |
| NO.             |  |



UNLESS ELEVATIONS ARE SHOWN, ALL UTILITY LOCATIONS SHOWN ON THE CROSS SECTIONS ARE BASED ON THE APPROXIMATE DEPTH SUPPLIED BY THE UTILITY CO. & SHOULD BE FIELD VERIFIED BY CONTRACTOR



|  |           |          |         |
|--|-----------|----------|---------|
| FILE NAME  | USER NAME | DESIGNED | REVISED |
| \\projects\200803566\dgn\gk\XS-IL-RT8-sheets.dgn | IDOT      | -        | -       |
| PLOT SCALE = 20.7420' / IN.                      | DRAWN     | -        | REVISED |
| PLOT DATE = 10/21/2011                           | CHECKED   | -        | REVISED |
|  | DATE      | 10-21-11 | REVISED |

|                              |   |             |         |          |              |                           |
|------------------------------|---|-------------|---------|----------|--------------|---------------------------|
| STATE OF ILLINOIS            | FAP 399 (IL RTE. 8)   | F.A.P. RTE. | SECTION | COUNTY   | TOTAL SHEETS | SHEET NO.                 |
| DEPARTMENT OF TRANSPORTATION | CROSS SECTIONS  | 399         | 36 R-7  | TAZEWELL | 390          | 331                       |
|                              | SCALE: SHEET NO. OF SHEETS STA. 228+81.36 TO STA. 228+97.57 |             |         |          |              | CONTRACT NO. 68370        |
|                              |   |             |         |          |              | ILLINOIS FED. AID PROJECT |