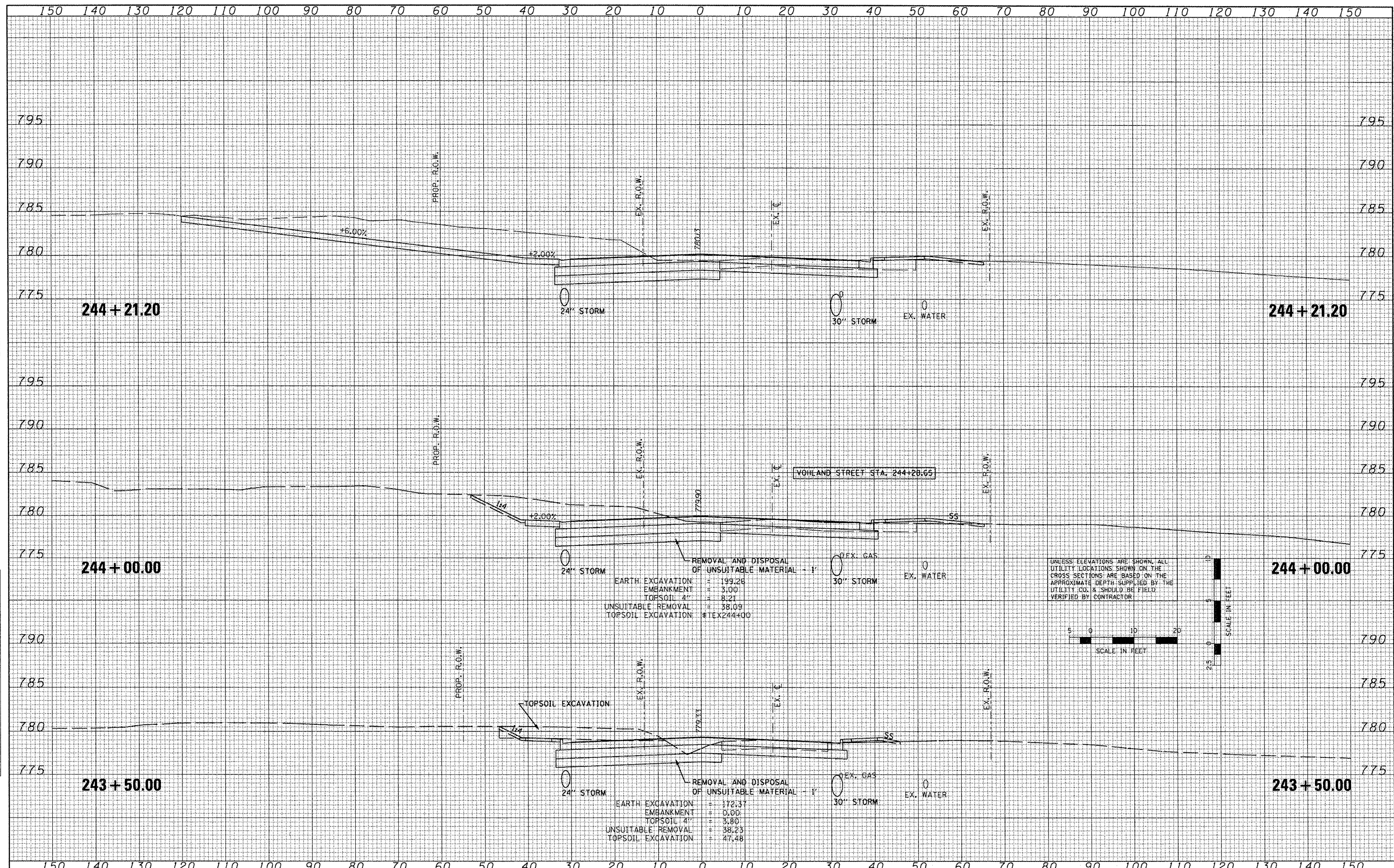
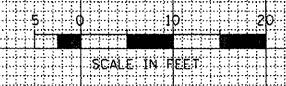


DATE	
BY	
REVISIONS	
NO.	
DATE	
BY	
REVISIONS	
NO.	
DATE	
BY	
REVISIONS	
NO.	

DATE	
BY	
REVISIONS	
NO.	
DATE	
BY	
REVISIONS	
NO.	
DATE	
BY	
REVISIONS	
NO.	



UNLESS ELEVATIONS ARE SHOWN, ALL UTILITY LOCATIONS SHOWN ON THE CROSS SECTIONS ARE BASED ON THE APPROXIMATE DEPTH SUPPLIED BY THE UTILITY CO. & SHOULD BE FIELD VERIFIED BY CONTRACTOR



FILE NAME = x:\proj\jeats\200803566\dgn\gpk\XS-IL-RT8-sheets.dgn
 USER NAME = 1001
 PLOT SCALE = 20.7420' / IN.
 PLOT DATE = 10/21/2011

DESIGNED -	REVISED -
DRAWN -	REVISED -
CHECKED -	REVISED -
DATE - 10-21-11	REVISED -

STATE OF ILLINOIS
 DEPARTMENT OF TRANSPORTATION

FAP 399 (IL RTE. 8)
 CROSS SECTIONS
 SCALE: SHEET NO. OF SHEETS STA. 243+50.00 TO STA. 244+00.00

F.A.P. RTE. 399	SECTION 36 R-7	COUNTY TAZEWELL	TOTAL SHEETS 390	SHEET NO. 352
CONTRACT NO. 68370				ILLINOIS FED. AID PROJECT