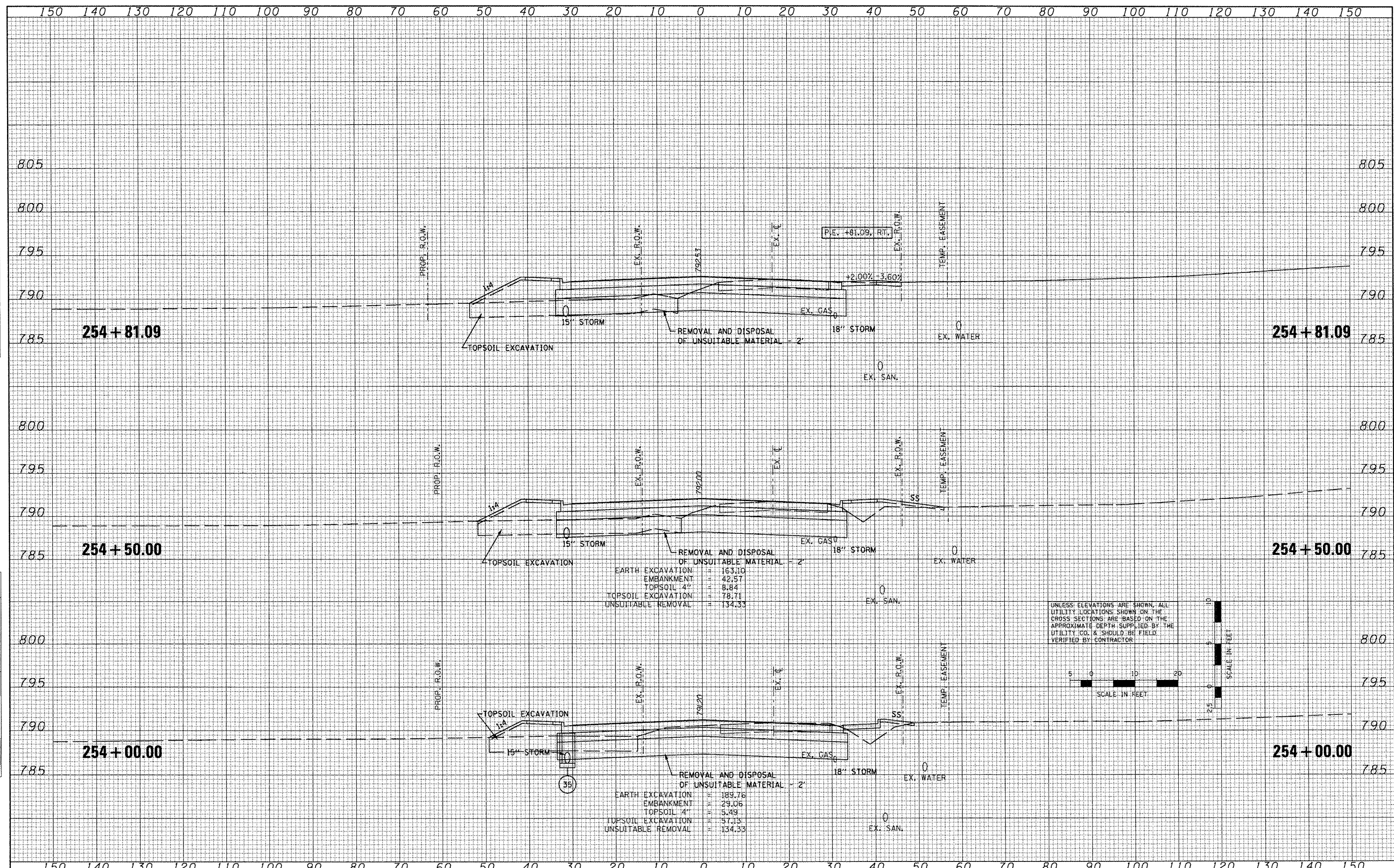


DATE	
BY	
FINAL SURVEY	SURVEYED
NOTE BOOK NO.	PLOTTED
	TEMPLATE
	AREAS CHECKED

DATE	
BY	
ORIGINAL SURVEY	SURVEYED
NOTE BOOK NO.	PLOTTED
	TEMPLATE
	AREAS CHECKED



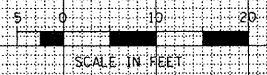
254 + 50.00

EARTH EXCAVATION	= 163.10
EMBANKMENT	= 42.57
TOPSOIL 4"	= 8.84
TOPSOIL EXCAVATION	= 78.71
UNSUITABLE REMOVAL	= 134.33

254 + 00.00

EARTH EXCAVATION	= 189.76
EMBANKMENT	= 29.06
TOPSOIL 4"	= 5.49
TOPSOIL EXCAVATION	= 57.13
UNSUITABLE REMOVAL	= 134.33

UNLESS ELEVATIONS ARE SHOWN, ALL UTILITY LOCATIONS SHOWN ON THE CROSS SECTIONS ARE BASED ON THE APPROXIMATE DEPTH SUPPLIED BY THE UTILITY CO. & SHOULD BE FIELD VERIFIED BY CONTRACTOR



FILE NAME = x:\projects\20080366\dgn\gpk\X5-IL-RT8-sheets.dgn
 USER NAME = IDOT
 PLOT SCALE = 20.7420" / IN.
 PLOT DATE = 10/21/2011

DESIGNED -	REVISD -
DRAWN -	REVISD -
CHECKED -	REVISD -
DATE - 10-21-11	REVISD -

STATE OF ILLINOIS
 DEPARTMENT OF TRANSPORTATION

FAP 399 (IL RTE. 8)
 CROSS SECTIONS
 SCALE: SHEET NO. OF SHEETS STA. 254+00.00 TO STA. 254+81.09

F.A.P. RTE. 399	SECTION 36 R-7	COUNTY TAZEWELL	TOTAL SHEETS 390	SHEET NO. 363
CONTRACT NO. 68370				ILLINOIS FED. AID PROJECT