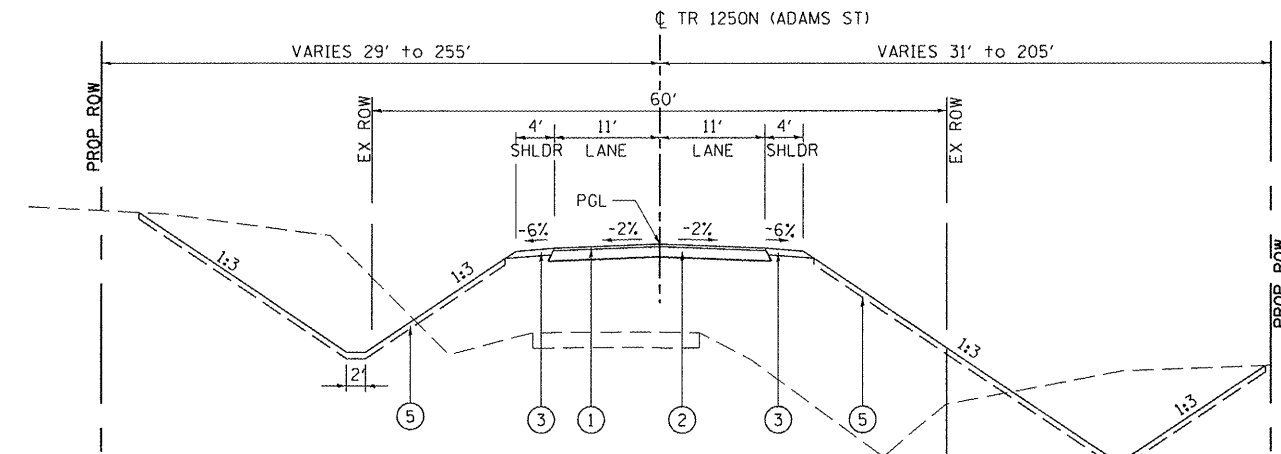
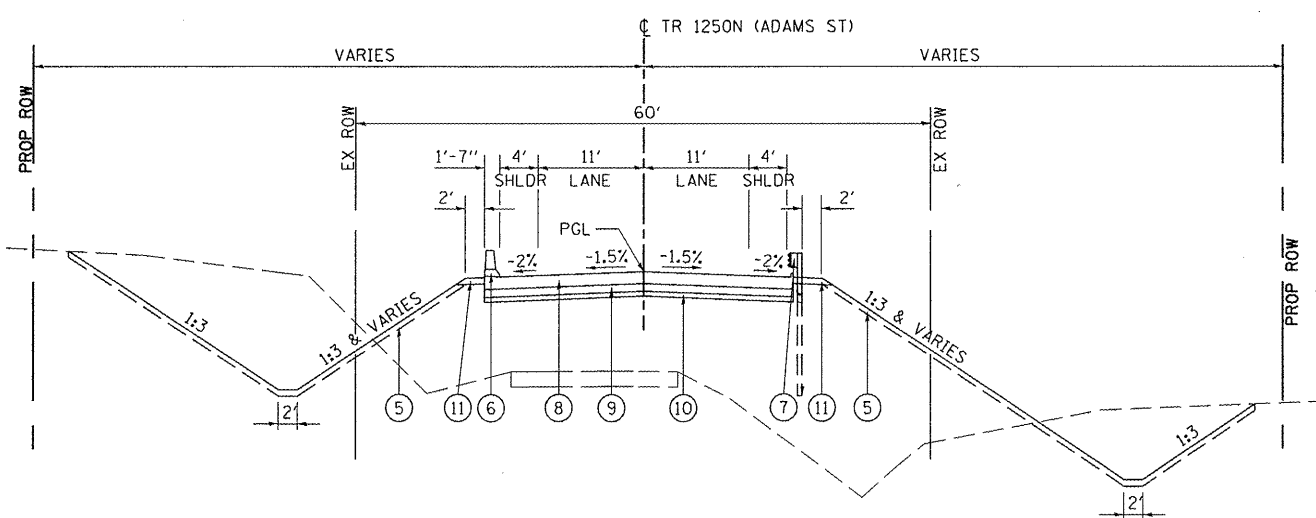


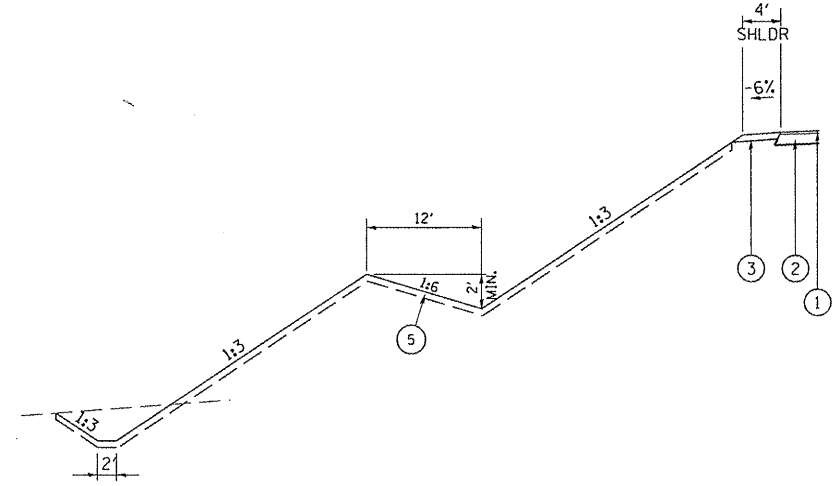
EXISTING TYPICAL SECTION
STA 1004+70.00 TO STA 1020+00.00



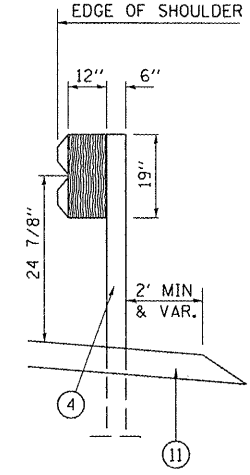
PROPOSED TYPICAL SECTION
STA 1004+70.00 TO STA 1011+54.72
STA 1014+17.24 TO STA 1020+00.00



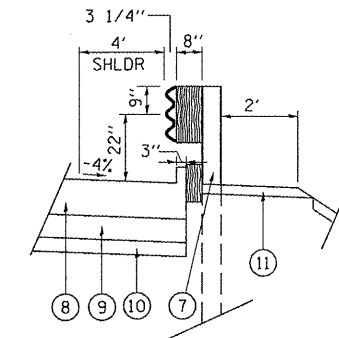
PROPOSED TYPICAL SECTION
STA 1011+54.72 TO STA 1011+84.72
BRIDGE OMISSION STA 1011+84.72 TO STA 1013+87.24
STA 1013+87.24 TO STA 1014+17.24



BENCH DETAIL



TYPICAL GUARDRAIL SECTION
(SEE IDOT HWY STD DETAIL 630301-D4)



BRIDGE APPROACH PAVEMENT WITH CURB
AND TRAFFIC BARRIER TERMINAL, TYPE 6
(SEE IDOT HWY STD DETAIL 631031-D4)

LEGEND

- ① CLASS A-3 BITUMINOUS SURFACE TREATMENT
- ② AGGREGATE BASE COURSE, TYPE A 8"
- ③ AGGREGATE SHOULDER, TYPE B 4"
- ④ STEEL PLATE BEAM GUARDRAIL, TYPE A
- ⑤ TOPSOIL FURNISH AND PLACE, 4"
- ⑥ TYPE F BARRIER TO 15' FROM BACK OF ABUTMENT
- ⑦ TRAFFIC BARRIER TERMINAL, TYPE 6
- ⑧ BRIDGE APPROACH PAVEMENT (15')
- ⑨ BRIDGE APPROACH FOOTING (10')
- ⑩ SUB-BASE GRANULAR MATERIAL, TYPE B, 6"
- ⑪ GUARDRAIL AGGREGATE EROSION CONTROL

FILE NAME =	USER NAME = jwh1to	DESIGNED - JRB	REVISED -	STATE OF ILLINOIS DEPARTMENT OF TRANSPORTATION	TR 1250N (ADAMS STREET EXTENSION) TYPICAL SECTIONS			F.A.P. RTE.	SECTION	COUNTY	TOTAL SHEETS	SHEET NO.
V:\Transportation\2891\1250N (ADAMS) PLAN	S:\ADAMST001.dgn	DRAWN - JRB	REVISED -		SCALE: N.T.S.	SHEET NO. 1 OF 1 SHEETS	STA. N/A TO STA. N/A	407	55-3HB-1	McDONOUGH	103	8
	PLOT SCALE = 20,000' / 1"	CHECKED - JRB	REVISED -		CONTRACT NO. 68A41							
	PLOT DATE = 10/21/2011	DATE - 10/20/11	REVISED -		ILLINOIS FED. AID PROJECT							