

**MINIMUM BAR LAP**

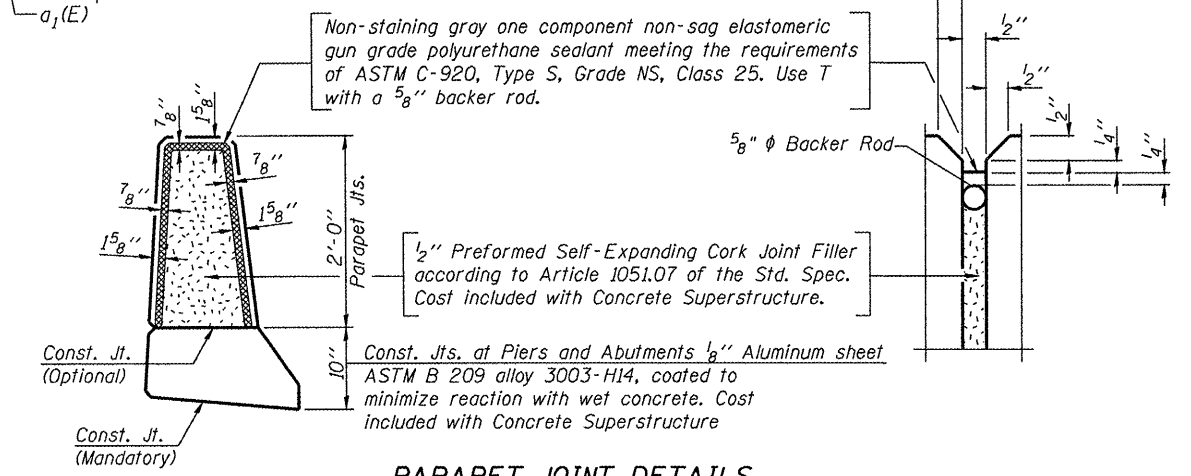
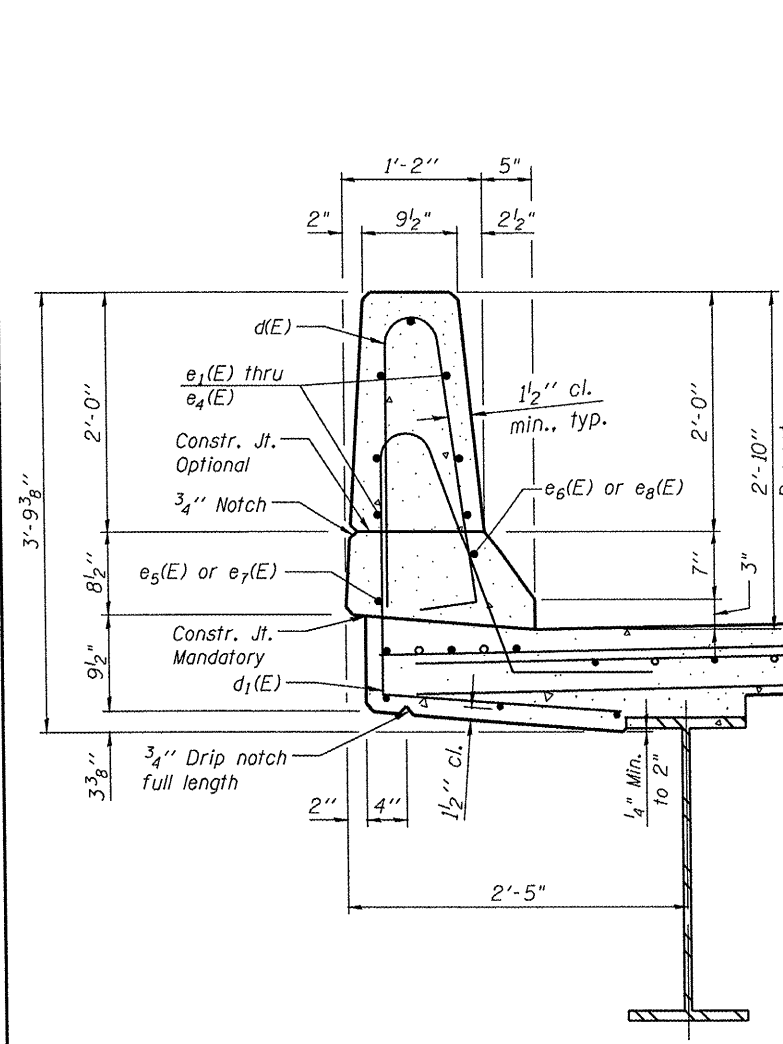
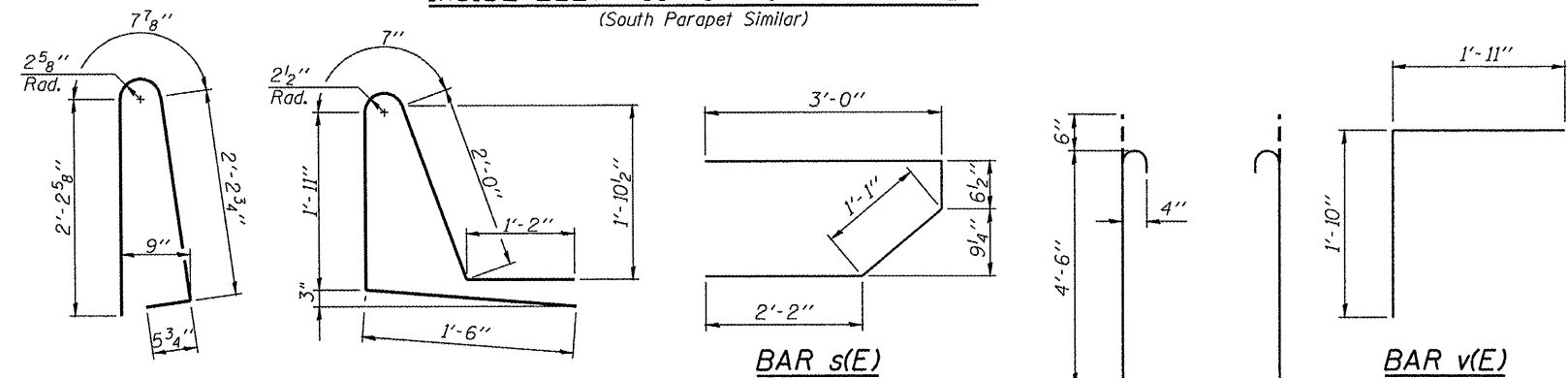
- (Parapet)
- #4 bar = 2'-0"
- #5 bar = 2'-6"
- #6 bar = 3'-0"
- #8 bar = 5'-2"

**SUPERSTRUCTURE BILL OF MATERIAL**

Bar	No.	Size	Length	Shape
a(E)	348	#5	32'-6"	—
a <sub>1</sub> (E)	244	#5	32'-0"	—
a <sub>2</sub> (E)	694	#6	6'-6"	—
b(E)	370	#5	22'-6"	—
b <sub>1</sub> (E)	102	#6	23'-6"	—
b <sub>2</sub> (E)	248	#5	27'-6"	—
d(E)	444	#5	5'-7"	⌋
d <sub>1</sub> (E)	444	#5	7'-2"	⌋
e <sub>1</sub> (E)	56	#4	16'-8"	—
e <sub>2</sub> (E)	28	#4	16'-10"	—
e <sub>3</sub> (E)	14	#4	16'-9"	—
e <sub>4</sub> (E)	14	#4	14'-9"	—
e <sub>5</sub> (E)	12	#4	30'-0"	—
e <sub>6</sub> (E)	8	#8	44'-3"	—
e <sub>7</sub> (E)	4	#4	16'-10"	—
e <sub>8</sub> (E)	4	#8	16'-10"	—
m(E)	10	#6	32'-10"	—
m <sub>1</sub> (E)	8	#6	6'-5"	—
m <sub>2</sub> (E)	16	#6	8'-8"	—
m <sub>3</sub> (E)	4	#6	1'-11"	—
m <sub>4</sub> (E)	10	#6	5'-4"	—
s(E)	72	#5	6'-10"	⌋
s <sub>1</sub> (E)	72	#4	12'-2"	⌋
v(E)	72	#5	3'-9"	⌋
Reinforcement Bars, Epoxy Coated		Pound	58150	
Concrete Superstructure		Cu. Yd.	254	
Bridge Deck Grooving		Sq. Yd.	675	

**INSIDE ELEVATION OF NORTH PARAPET**

(South Parapet Similar)



**TERRA ENGINEERING LTD.**  
 225 W. OHIO ST., FOURTH FL.  
 CHICAGO, IL 60654  
 W 312.7467-8123 F 312.7467-8228  
 WWW.TERRAENGINEERING.COM

FILE NAME: D468418.010.Parapet details.dgn  
 USER NAME: TERRA  
 PLOT SCALE: 1/8" = 1'-0" / 1/4" IN.  
 PLOT DATE: 12/1/2011

DESIGNED - OY	CHECKED - DA	REVISIONS -
DRAWN - CM	CHECKED - JB	

**STATE OF ILLINOIS DEPARTMENT OF TRANSPORTATION**

**PARAPET DETAILS STRUCTURE NO. 055-0067**

SHEET NO. S10 OF S23 SHEETS

F.A.P. RTE. 407	SECTION 55-3HB-1	COUNTY McDONOUGH	TOTAL SHEETS 103	SHEET NO. 35
CONTRACT NO. 68A41			ILLINOIS FED. AID PROJECT	