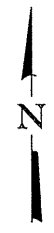


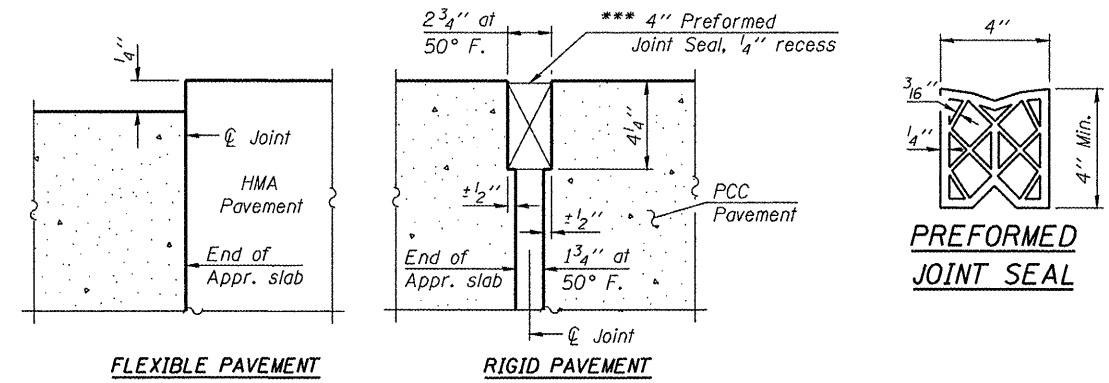
PLAN

(East approach shown, West approach similar)
 * Tilt #9 b4(E) bars as required to maintain clearance.
 ** Space between a3(E) bars, typ. each parapet.

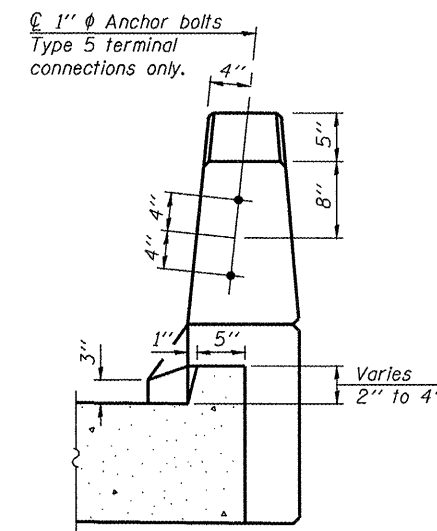


Notes:
 1. See sheet S13 of S23 for Sections C-C & D-D and View E-E.
 2. a3(E) thru a4(E) bar spacings measured along ϕ Rdwy.

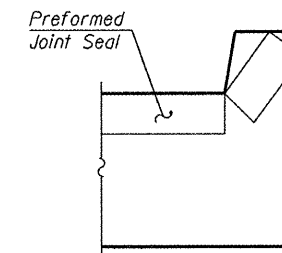
*** Cost included with Concrete Superstructure.



DETAIL A



VIEW B-B



VIEW F-F

Angle Preformed Joint Seal at 45° at curbs when req'd for drainage.

TERRA
 ENGINEERING LTD.
 225 W. OHIO ST., FOURTH FL.
 CHICAGO, IL 60654
 W 312 1467-0123 F 312 1467-0220
 WWW.TERRAENGINEERING.COM

BA-R

7-1-10

(Sheet 1 of 2)

FILE NAME 0468418_012_Appr_Slab.dgn	USER NAME = TERRA	DESIGNED - OY	REVISED -
		CHECKED - DA	REVISED -
		PLOT SCALE = 8/8 1/4" IN.	REVISED -
		PLOT DATE = 11/29/2011	REVISED -
		DRAWN - CM	REVISED -
		CHECKED - JB	REVISED -

STATE OF ILLINOIS
DEPARTMENT OF TRANSPORTATION

BRIDGE APPROACH SLAB DETAILS
STRUCTURE NO. 055-0067

SHEET NO. S12 OF S23 SHEETS

F.A.P. RTE. 407	SECTION 55-3HB-1	COUNTY McDONOUGH	TOTAL SHEETS 103	SHEET NO. 37
CONTRACT NO. 68A41				ILLINOIS FED. AID PROJECT