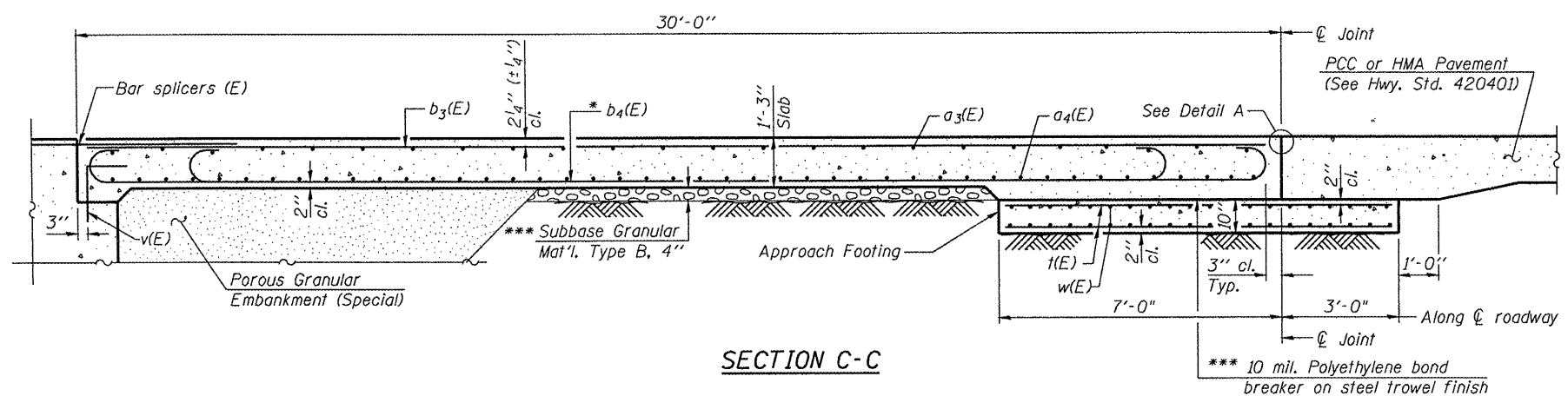
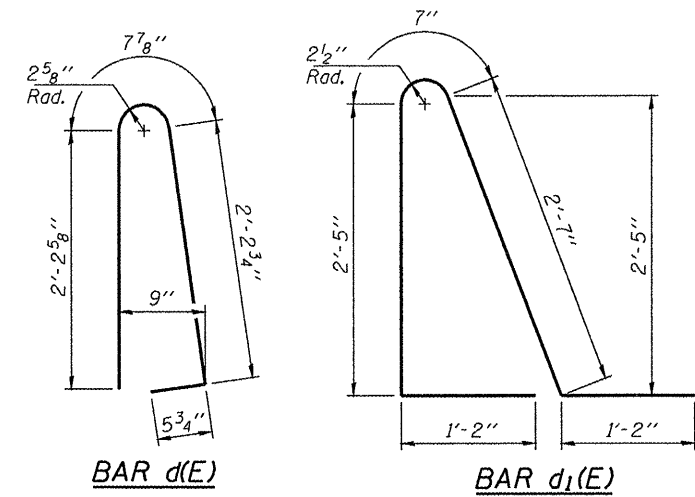


**Notes:**

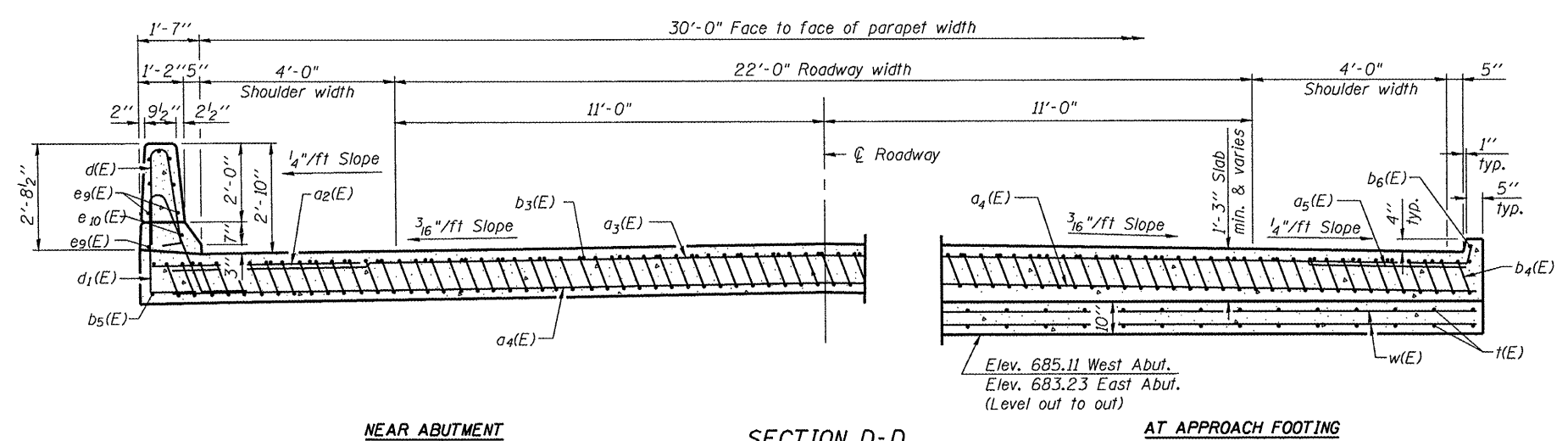
See sheet S12 of S23 for Detail A and View B-B.  
 Approach slab and parapet concrete shall be paid for as Concrete Superstructure.  
 Approach footing concrete shall be paid for as Concrete Structures.  
 Reinforcement shall be paid for as Reinforcement Bars, Epoxy Coated.  
 For v(E) bar details, see sheet S10 of S23.  
 The approach footing maximum applied service bearing pressure (Qmax) = 2.0 ksf.  
 For bar splicer details, see sheet S20 of S23.  
 Cost of excavation for approach footing included with Concrete Structures.  
 For Porous Granular Embankment (Special) and drainage treatment details, see sheet S02 of S23.  
 For additional parapet details, see sheet S10 of S23.



**SECTION C-C**



\* Tilt #9 b4(E) bars as required to maintain clearance.  
 \*\*\* Cost included with Concrete Superstructure.

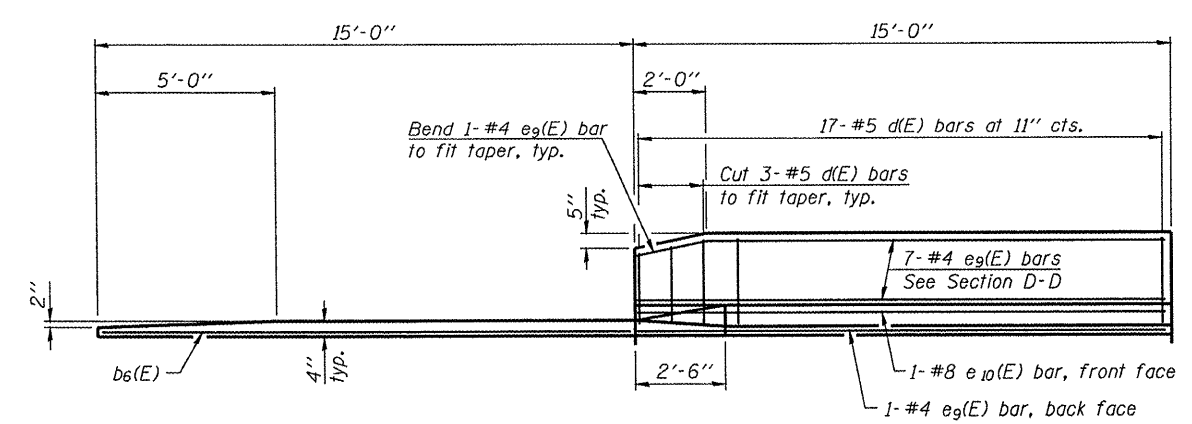


**NEAR ABUTMENT**

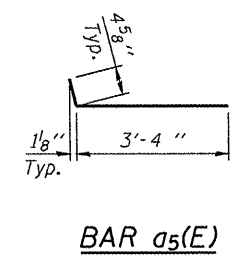
**SECTION D-D**

**AT APPROACH FOOTING**

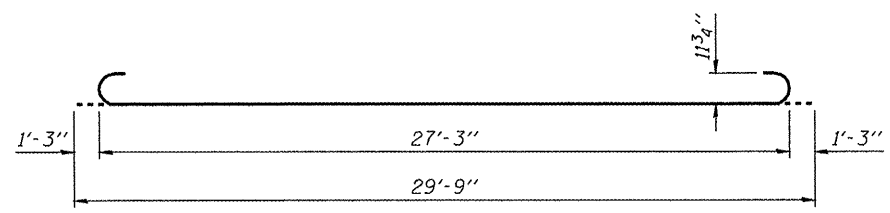
(See Plan for dimensions not shown)



**VIEW E-E**



**BAR a5(E)**



**BAR b4(E)**

**TWO APPROACHES  
 BILL OF MATERIAL**

Bar	No.	Size	Length	Shape
a2(E)	48	#6	6'-6"	—
a3(E)	50	#4	31'-6"	—
a4(E)	92	#5	31'-0"	—
a5(E)	64	#5	3'-9"	—
b3(E)	52	#4	29'-8"	—
b4(E)	158	#9	29'-9"	—
b5(E)	4	#4	14'-8"	—
b6(E)	4	#4	14'-4"	—
d(E)	68	#5	5'-7"	—
d1(E)	68	#5	7'-11"	—
e9(E)	32	#4	14'-8"	—
e10(E)	4	#8	14'-8"	—
t(E)	132	#4	9'-8"	—
w(E)	80	#5	30'-6"	—
Concrete Superstructure		Cu. Yd.		99
Concrete Structures		Cu. Yd.		21
Reinforcement Bars, Epoxy Coated		Pound		35810
Bridge Deck Grooving		Sq. Yd.		200

**TERRA**  
 ENGINEERING LTD.  
 225 W. OHIO ST., FOURTH FL.  
 CHICAGO, IL 60654  
 V(312)467-8123 F(312)467-8228  
 WWW.TERRAENGINEERING.COM

BA-R 7-1-10

(Sheet 2 of 2)

FILE NAME D468418_013_Appr_Slab.dgn	USER NAME = TERRA	DESIGNED - OY	REVISOR -	<b>STATE OF ILLINOIS          DEPARTMENT OF TRANSPORTATION</b>	<b>BRIDGE APPROACH SLAB DETAILS          STRUCTURE NO. 055-0067</b>	F.A.P. RTE.	SECTION	COUNTY	TOTAL SHEETS	SHEET NO.	
	CHECKED - DA	REVISOR -	407			55-3HB-1	McDONOUGH	103	38		
	PLOT SCALE = 0:2.0000 1" = 10'	DRAWN - CM	REVISOR -			CONTRACT NO. 68A41					
	PLOT DATE = 11/29/2011	CHECKED - JB	REVISOR -			ILLINOIS FED. AID PROJECT					