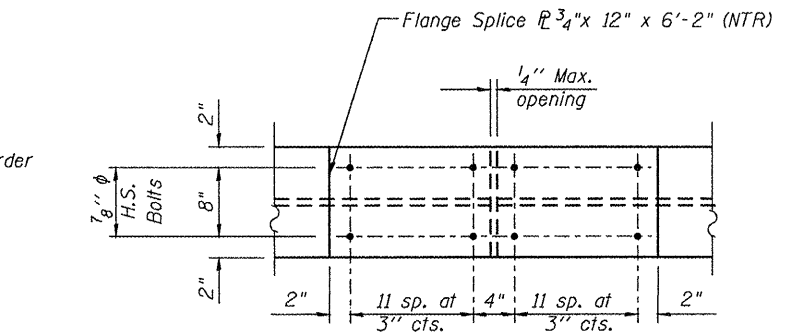
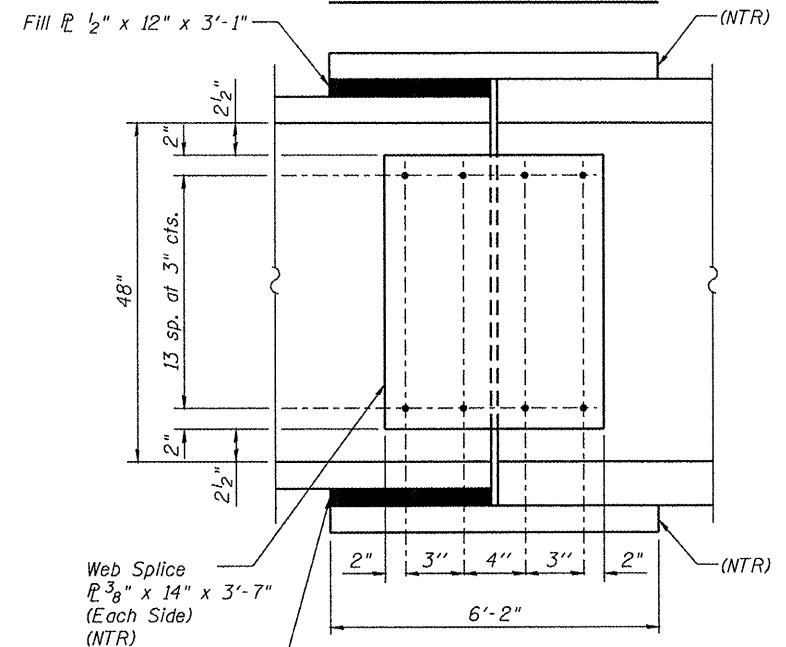


SECTION C-C

DIAPHRAGM D



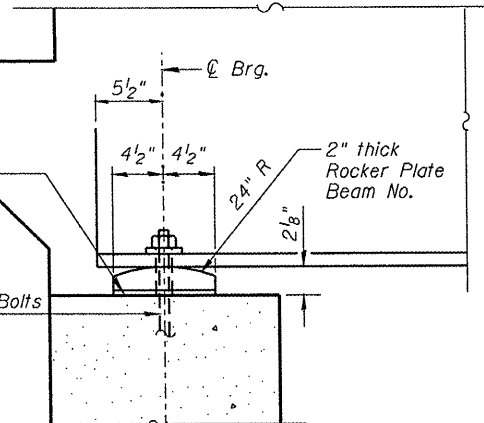
FLANGE SPLICE PLATE



WEB SPLICE PLATE

1/8" elastomeric neoprene leveling pad according to Article 1052.02 of the Standard Specifications. Cost included with Structural Steel.

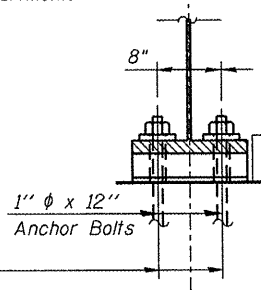
1" diameter x 12" Anchor Bolts (F1554 Grade 36) to be grouted into drilled holes after beams are in place.



SECTION AT ABUTMENT

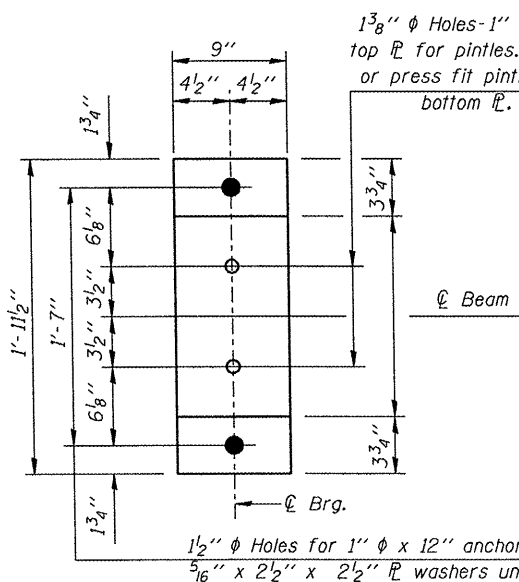
INTERIOR DIAPHRAGM

Notes:
Two hardened washers required for each set of oversized holes.
* Alternate channels C15x50 are permitted to facilitate material acquisition. Calculated weight of structural steel is based on C15x40 sections. The alternate, if utilized, shall be provided at no additional cost to the Department.

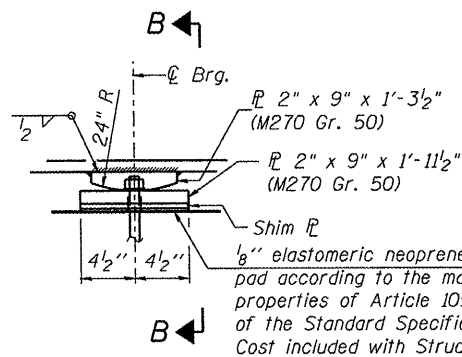


1/8" elastomeric neoprene leveling pad according to Article 1052.02 of the Standard Specifications. Cost included with Structural Steel.

1 3/8 inch diameter Holes - 1 inch deep in top flange for pintles. Thread or press fit pintles into bottom flange.

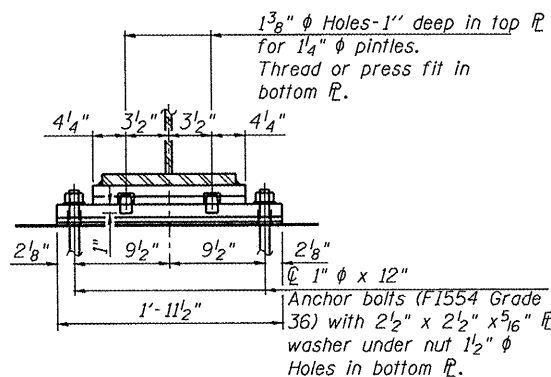


PLAN

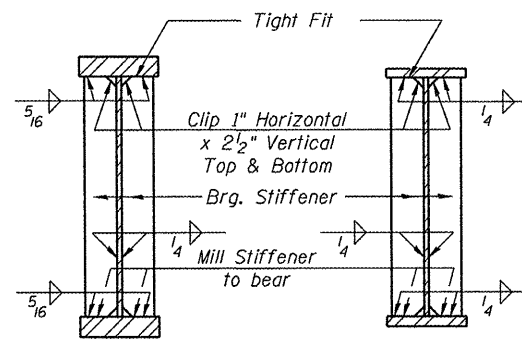


ELEVATION AT PIER

FIXED BEARING



SECTION B-B



SECTION AT PIER

SECTION AT ABUTMENT

Notes:
Anchor bolts shall be ASTM F1554 (or an Engineer-approved alternate material) of the grade(s) and diameter(s) specified. ASTM A 307 Grade C anchor bolts may be used in lieu of ASTM F1554 Grade 36 (Fy=36 ksi). The corresponding specified grade of AASHTO M314 anchor bolts may be used in lieu of ASTM F1554.

Anchor bolts at pier may be either cast in place or installed in holes drilled after the supported member is in place.

Drilled and set anchor bolts shall be installed according to Article 521.06 of the Standard Specifications.

Load carrying components designated "NTR" shall conform to the Supplemental Requirements for Notch Toughness, Zone 2.

The structural steel plates of the Bearing Assembly shall conform to the requirements of AASHTO M 270 Grade 50.

Two 1/8 inch adjusting shims shall be provided for each bearing in addition to all other plates of shims and placed as shown on bearing details.

BILL OF MATERIAL

ITEM	UNIT	TOTAL
Anchor Bolts, 1"	EACH	36
Stud Shear Connectors	EACH	2,430

DETAIL OF PINTLE



225 W. OHIO ST., FOURTH FL., CHICAGO, IL 60654
W13121467-0123 F3121467-0220
WWW.TERRAENGINEERING.COM

FILE NAME: D468418.015.Steel details.dgn

USER NAME = TERRA	DESIGNED - OY	REVISIONS -
PLOT SCALE = 0.1250" / IN.	CHECKED - DA	REVISIONS -
PLOT DATE = 11/29/2011	DRAWN - CM	REVISIONS -
	CHECKED - JB	REVISIONS -

STATE OF ILLINOIS
DEPARTMENT OF TRANSPORTATION

STEEL DETAILS
STRUCTURE NO. 055-0067

SHEET NO. S15 OF S23 SHEETS

F.A.P. RTE.	SECTION	COUNTY	TOTAL SHEETS	SHEET NO.
407	55-3HB-1	McDONOUGH	103	40
CONTRACT NO. 68A41				
ILLINOIS FED. AID PROJECT				