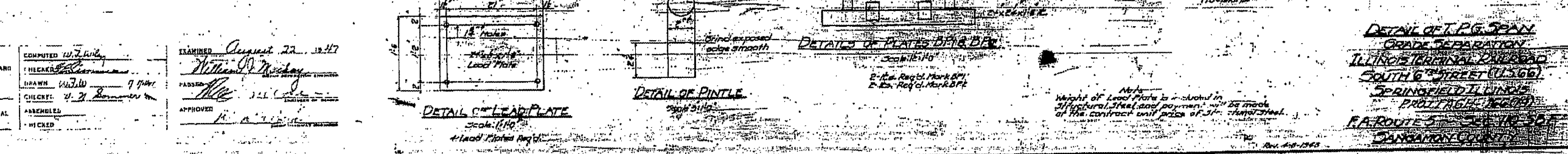
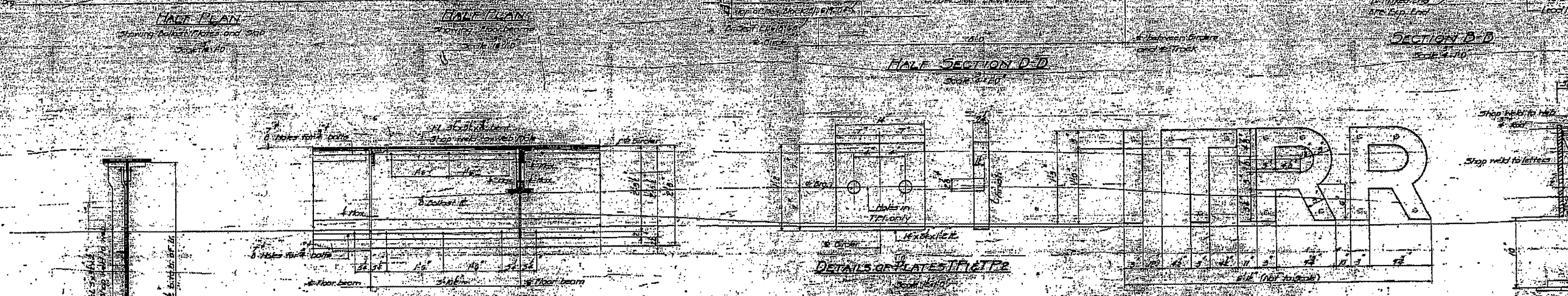
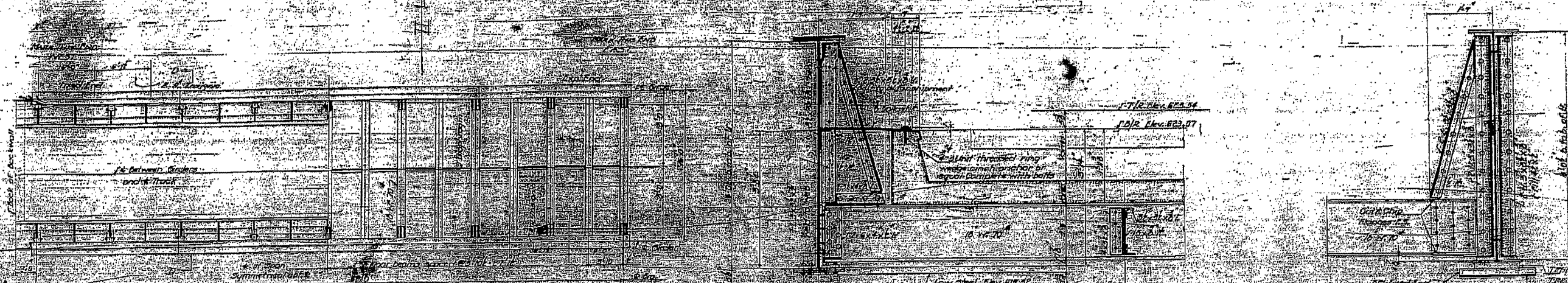


STATE OF ILLINOIS
DEPARTMENT OF PUBLIC WORKS & BUILDINGS
DIVISION OF HIGHWAYS

SECTION	COUNTY	TOTAL SHEETS	SHEET NO.
D-5 PAINTING	SANGAMON	13	6



GENERAL NOTES

1. All work shall conform to the requirements of the Standard Specifications of the American Railway Society for Highway and Railroad Bridges and Special Provisions.
2. All steel shall be AISC A36.
3. All steel shall be painted with a zinc-rich primer and a two-coat system of red oxide paint.
4. All steel shall be galvanized.
5. All steel shall be fireproofed.
6. All steel shall be protected from corrosion.
7. All steel shall be protected from rust.
8. All steel shall be protected from oxidation.
9. All steel shall be protected from weathering.
10. All steel shall be protected from air pollution.
11. All steel shall be protected from acid rain.
12. All steel shall be protected from salt crystallization.
13. All steel shall be protected from chloride ion attack.
14. All steel shall be protected from sulfate attack.
15. All steel shall be protected from carbonation.
16. All steel shall be protected from delamination.
17. All steel shall be protected from spalling.
18. All steel shall be protected from scaling.
19. All steel shall be protected from surface cracking.
20. All steel shall be protected from reinforcement corrosion.
21. All steel shall be protected from concrete corrosion.
22. All steel shall be protected from concrete delamination.
23. All steel shall be protected from concrete scaling.
24. All steel shall be protected from concrete surface cracking.
25. All steel shall be protected from concrete reinforcement corrosion.
26. All steel shall be protected from concrete chloride ion attack.
27. All steel shall be protected from concrete sulfate attack.
28. All steel shall be protected from concrete carbonation.
29. All steel shall be protected from concrete delamination.
30. All steel shall be protected from concrete spalling.
31. All steel shall be protected from concrete scaling.
32. All steel shall be protected from concrete surface cracking.
33. All steel shall be protected from concrete reinforcement corrosion.
34. All steel shall be protected from concrete chloride ion attack.
35. All steel shall be protected from concrete sulfate attack.
36. All steel shall be protected from concrete carbonation.
37. All steel shall be protected from concrete delamination.
38. All steel shall be protected from concrete spalling.
39. All steel shall be protected from concrete scaling.
40. All steel shall be protected from concrete surface cracking.

COMPUTED BY: J. J. [Signature]
DRAWN BY: W. J. [Signature]
CHECKED BY: W. J. [Signature]
ASSEMBLED BY: [Signature]

EXAMINED BY: [Signature]
PASSED BY: [Signature]
APPROVED BY: [Signature]

FILE NAME =	USER NAME = #USER#	DESIGNED -	REVISED -	STATE OF ILLINOIS DEPARTMENT OF TRANSPORTATION	084-9900 (FOR INFORMATION ONLY)	SECTION	COUNTY	TOTAL SHEETS	SHEET NO.
#FILE#		DRAWN -	REVISED -		SCALE: SHEET NO. OF SHEETS STA. TO STA.	666	D-5 PAINTING 2008-	SANGAMON	13
		CHECKED -	REVISED -			2012	CONTRACT NO. T2C48		
		PLOT DATE = #DATE#	REVISED -						