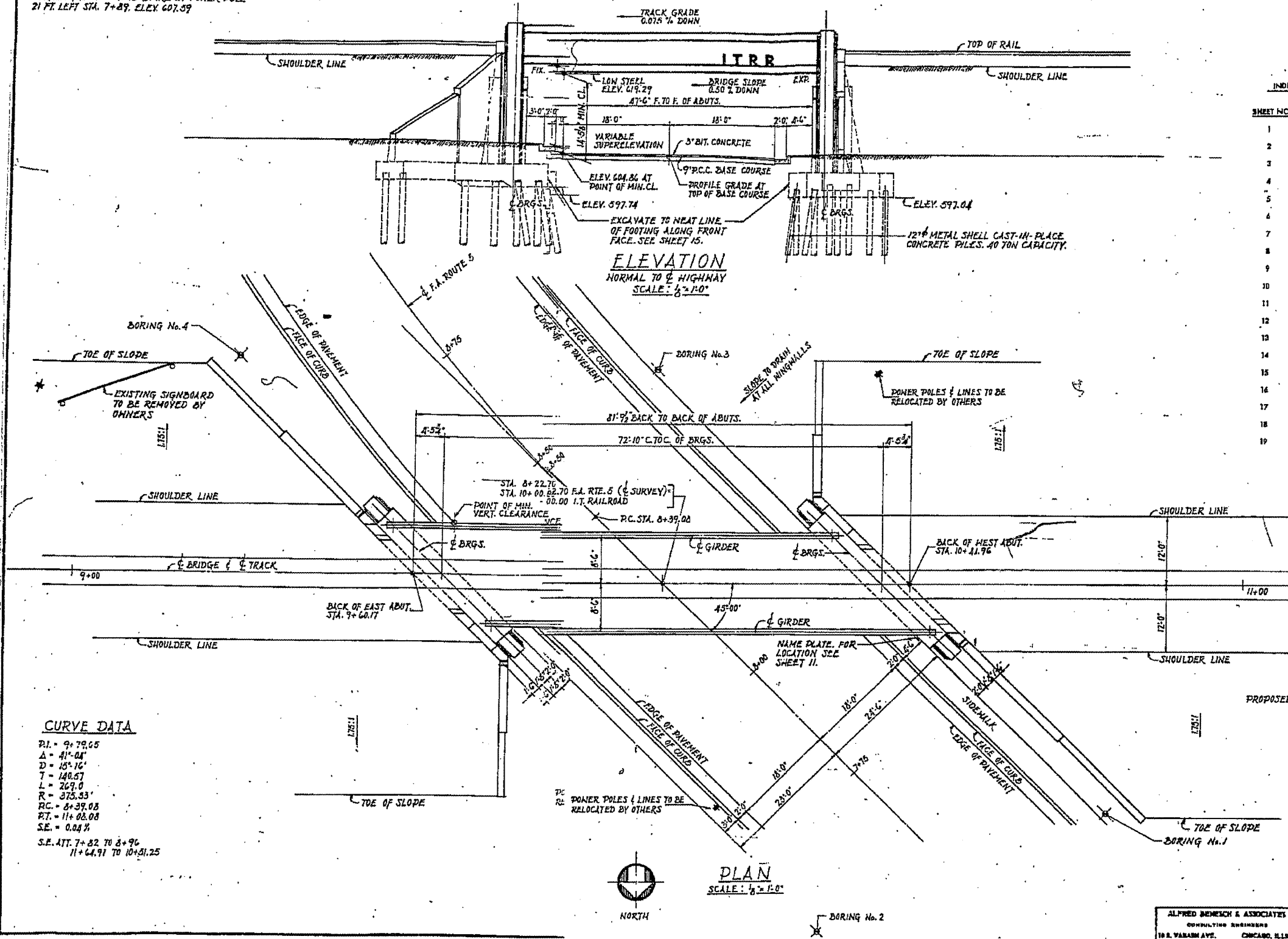


BENCH MARK No. 1  
HORIZONTAL RAILROAD SPIKE IN POWER POLE  
21 FT. LEFT STA. 7+89. ELEV. 607.59

084-0033

SECTION	COUNTY	TOTAL SHEETS	SHEET NO.
F.A. 5	110X-755	SANGAMON	25
STA.	TO STA.	PROJECT	
F.A. 5	110X-755		

SHEET 1 OF 19

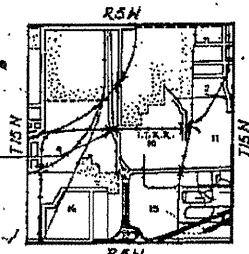


INDEX OF BRIDGE PLANS

SHEET NO.	DESCRIPTION
1	GENERAL PLAN & ELEVATION
2	BORINGS, PROFILES, GENERAL NOTES, DESIGN DATA & QUANTITIES
3	STEEL FRAMING PLAN
4	GIRDER DETAILS
5	TYPICAL DECK CROSS SECTION
6	END FLOOR BEAM
7	UPPER FLOOR PLATE DETAILS
8	FLOOR PLATE DETAILS
9	BEARINGS
10	ABUTMENT FOOTING PLAN
11	WEST ABUTMENT
12	EAST ABUTMENT
13	ABUTMENT DETAILS
14	REINFORCEMENT BAR LISTS
15	EXCAVATION & DRAINAGE DETAILS
16	PLAN & ELEVATION OF TEMPORARY TRESTLE
17	TEMPORARY TRESTLE STEEL SPAN DETAILS
18	TEMPORARY TRESTLE DETAILS
19	TEMPORARY TRESTLE DETAILS

**CURVE DATA**

P.I. = 9+79.65  
 Δ = 41°-04'  
 D = 15°-16'  
 T = 140.57  
 L = 269.0  
 R = 375.33  
 P.C. = 8+39.08  
 P.T. = 11+02.08  
 S.E. = 0.04 %  
 S.E. INT. 7+82 TO 8+96  
 11+64.91 TO 10+51.25



LOCATION PLAN  
084-0033

GENERAL PLAN & ELEVATION  
UNDERPASS

I.T.R.R. BRIDGE No. F-775  
OVER SOUTH 5<sup>TH</sup> STREET EXTENDED SPRINGFIELD, ILLINOIS  
PROJECT UG 166(40)

F.A. ROUTE 5 SECTION 110X-755  
SANGAMON COUNTY  
STATION 8+22.70

ALFRED BENECH & ASSOCIATES  
CONSULTING ENGINEERS  
10 S. PEARSON AVE. CHICAGO, ILLINOIS

FILE NAME =	USER NAME = #USER#	DESIGNED -	REVISED -	STATE OF ILLINOIS DEPARTMENT OF TRANSPORTATION	084-0033 (FOR INFORMATION ONLY)	F.A.P. RTE.	SECTION	COUNTY	TOTAL SHEETS	SHEET NO.	
#FILE#		DRAWN -	REVISED -			666	D-6 PAINTING 2906'	SANGAMON	13	7	
		CHECKED -	REVISED -			SCALE: _____	SHEET NO. _____ OF _____ SHEETS	2022	CONTRACT NO. T2C48		
		DATE	REVISED			STA. _____ TO STA. _____	FED. ROAD DIST. NO. 6 ILLINOIS FED. AID PROJECT				