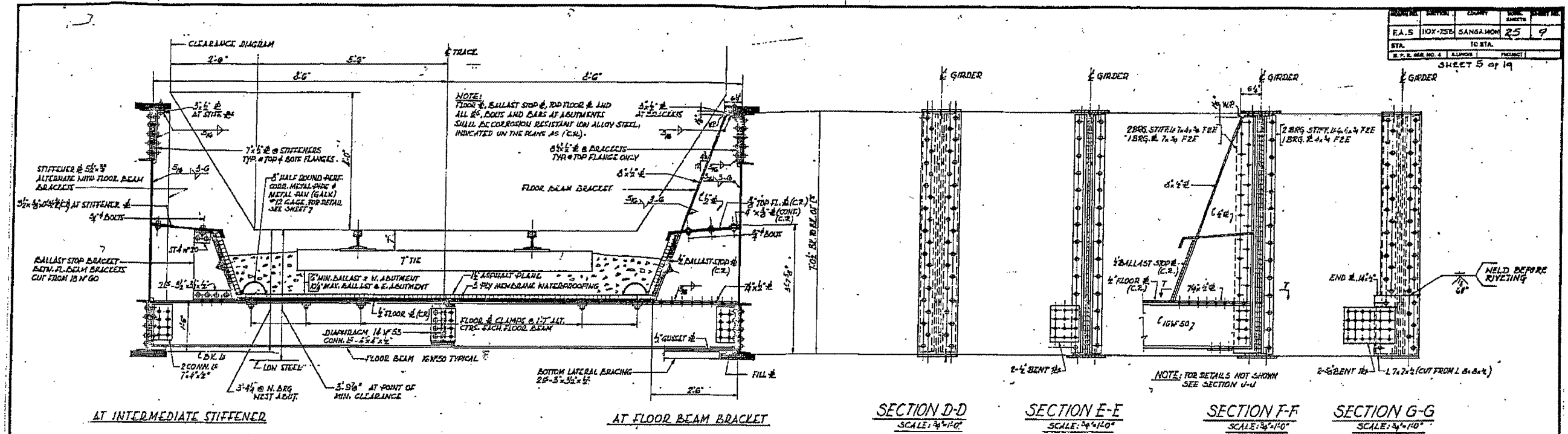


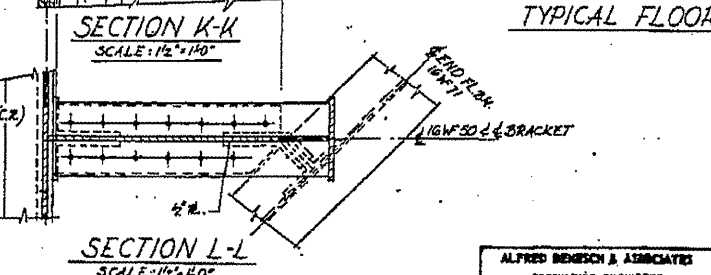
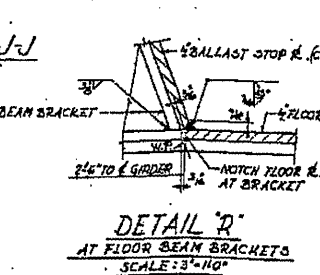
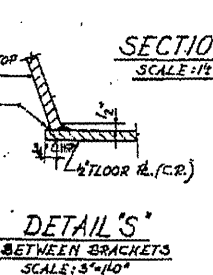
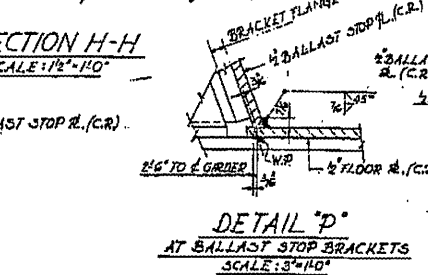
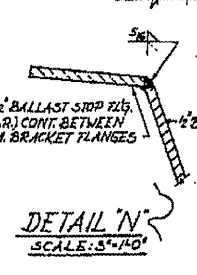
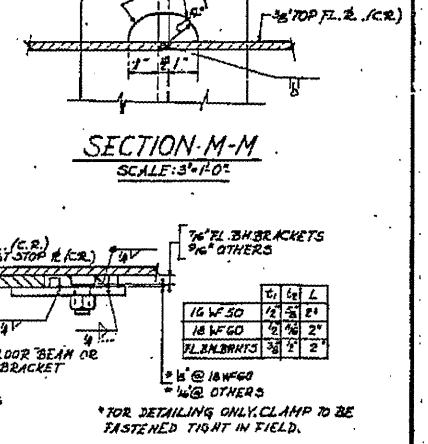
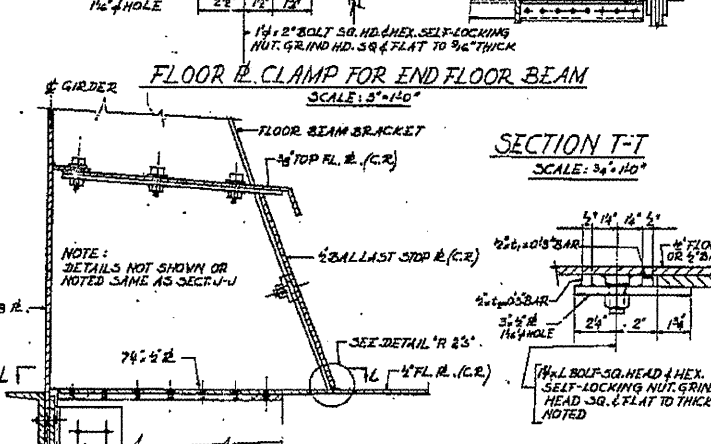
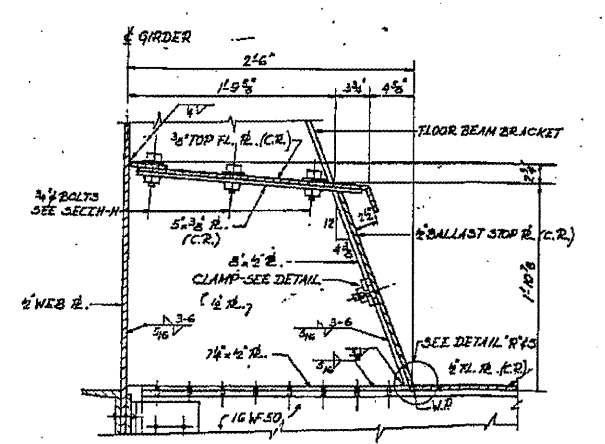
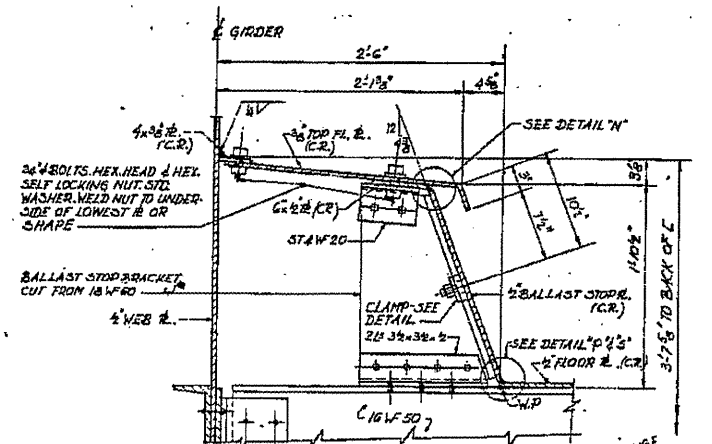
PROJECT NO.	SECTION	COUNTY	SHEET NO.	TOTAL SHEETS
E.A.S. 110X-75B	SANGAMON	25	9	
SHEET 5 OF 19				



AT INTERMEDIATE STIFFENER AT FLOOR BEAM BRACKET SECTION D-D SCALE: 3/4"=1'-0" SECTION E-E SCALE: 3/4"=1'-0" SECTION F-F SCALE: 3/4"=1'-0" SECTION G-G SCALE: 3/4"=1'-0"

TYPICAL DECK CROSS SECTION
SCALE: 3/4"=1'-0"

NOTES:
FOR LOCATION OF SECTIONS D-D, E-E, F-F, G-G & K-K, SEE SHEET 4
FOR LOCATION OF SECTIONS H-H, J-J, L-L, M-M SEE SHEET 7.



TYPICAL DECK CROSS SECTION UNDERPASS

I.T.R.R. BRIDGE No. F-77.5
OVER SOUTH 5TH STREET EXTENDED SPRINGFIELD, ILLINOIS
PROJECT UG 166 (40)

F.A. ROUTE 5 SECTION 110X-75B
SANGAMON COUNTY
STATION 8+22.70

ALFRED BENECH & ASSOCIATES
CONSULTING ENGINEERS
101 N. WASHINGTON ST. CHICAGO, ILLINOIS

FILE NAME =	USER NAME = #USER#	DESIGNED -	REVISED -	STATE OF ILLINOIS DEPARTMENT OF TRANSPORTATION	084-0033 (FOR INFORMATION ONLY)	F.A.P. RTE.	SECTION	COUNTY	TOTAL SHEETS	SHEET NO.
#FILE#		DRAWN -	REVISED -			665	D-6 PAINTING	SANGAMON	13	10
		CHECKED -	REVISED -			2017		CONTRACT NO. 72048		
		DATE -	REVISED -			SCALE:	SHEET NO. OF SHEETS	STA. TO STA.	FED. ROAD DIST. NO. 6 ILLINOIS FED. AID PROJECT	