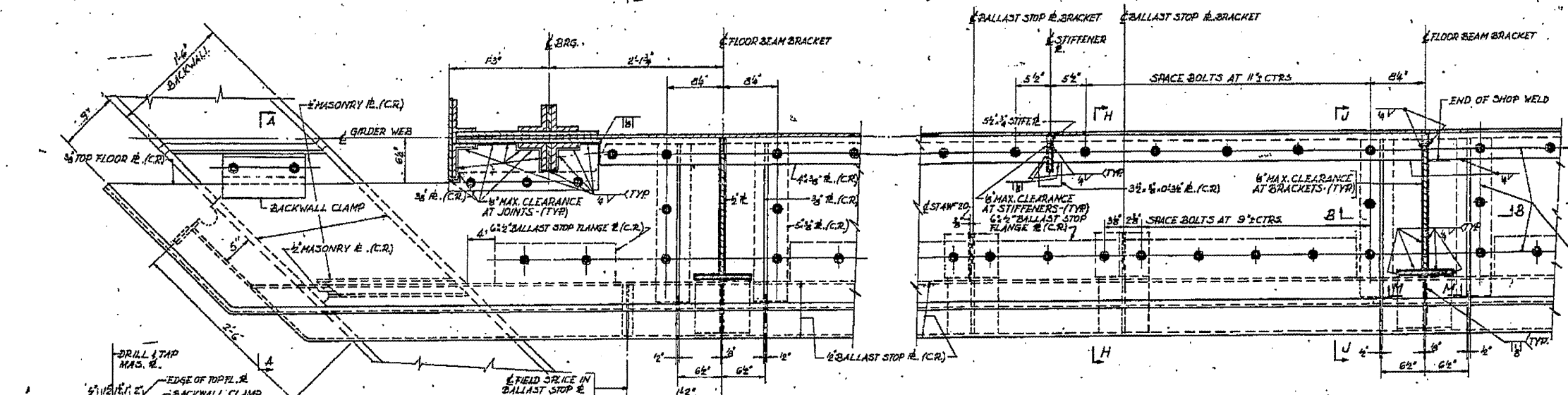


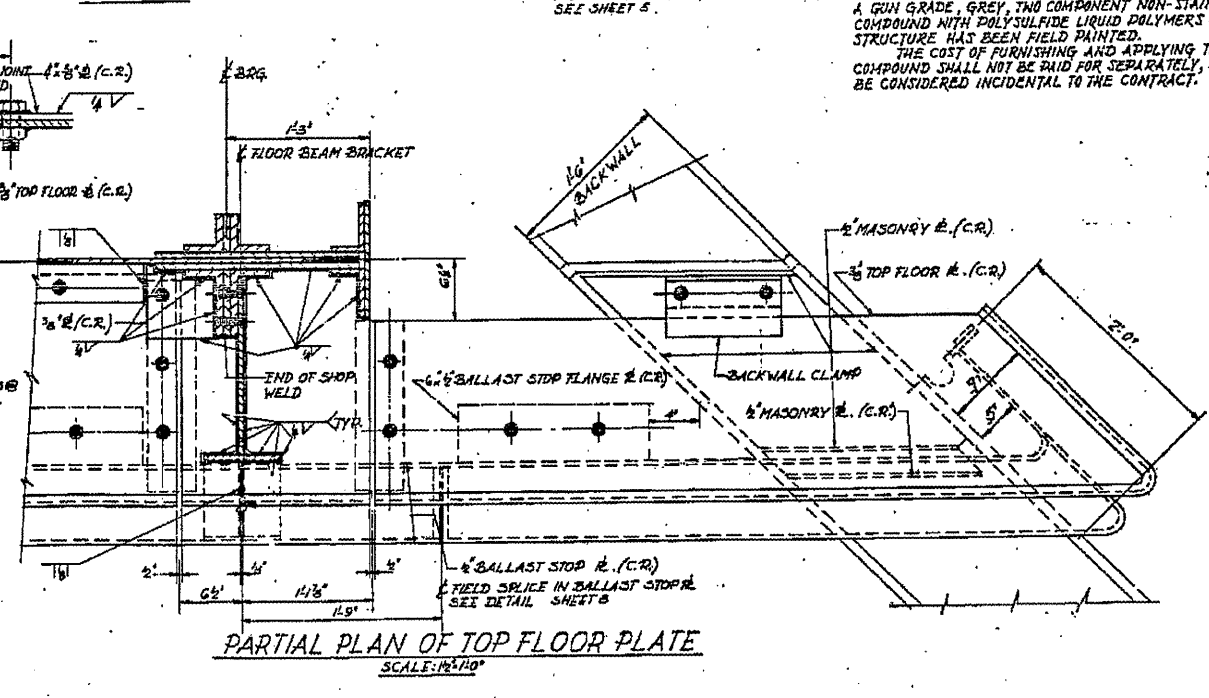
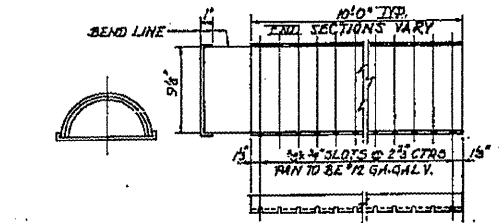
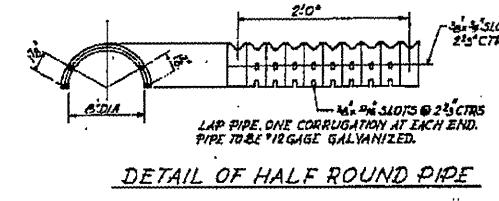
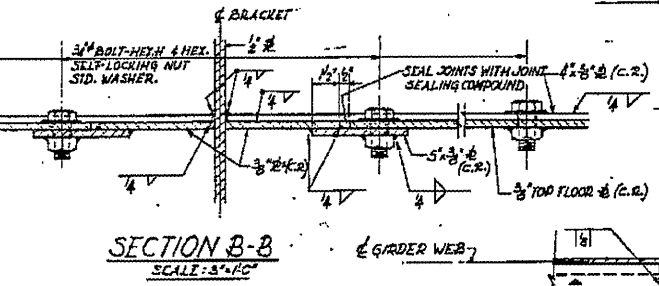
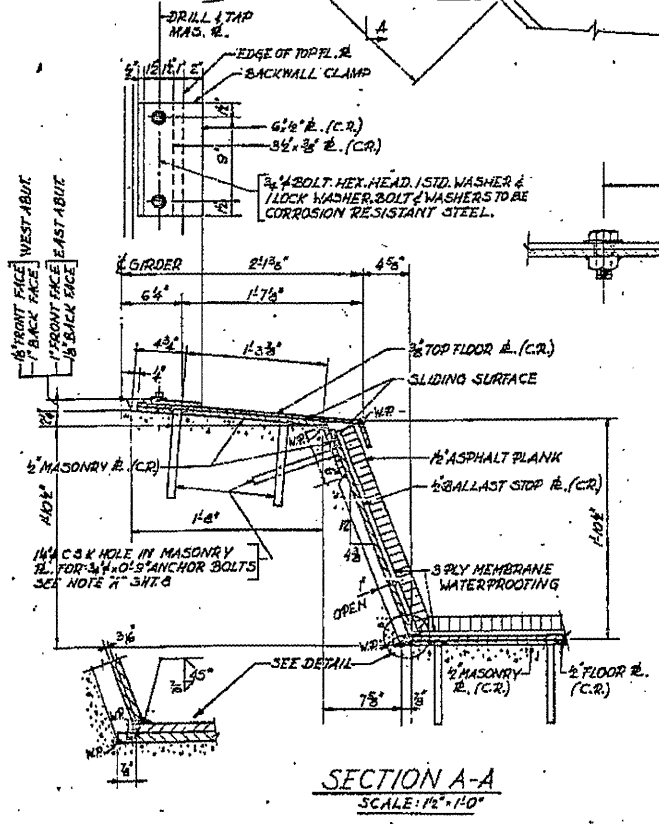
ROUTE NO.	SECTION	COUNTY	TOTAL SHEETS	SHEET NO.
EA. 5	10X-75B	SANGAMON	25	12
STA.	TO STA.			
F.P.R. DIST. NO. 6	ILLINOIS	PROJECT		
SHEET 7 OF 19				



ALL BOLTS FOR CONNECTING TOP FLOOR PLATE TO BE 3/4" WITH HEX. HEADS AND SELF-LOCKING NUTS WITH SID. WASHERS. SHOP WELD NUT TO UNDERSIDE OF LOWEST # OR SHAPE HOLES IN TOP FLOOR PLATE TO BE 3/4". HOLES IN UPPER PLATES TO BE 3/4" TO ALLOW FOR ADJUSTMENT.

NOTES:
FOR SECTIONS H-H, J-J, M-M SEE SHEET 5.

NOTE:
JOINTS IN TOP FLOOR PLATE SHALL BE SEALED WITH A GUN GRADE, GREY, TWO COMPONENT NON-STAINING SEALING COMPOUND WITH POLYSULFIDE LIQUID POLYMERS AFTER THE STRUCTURE HAS BEEN FIELD PAINTED. THE COST OF FURNISHING AND APPLYING THE SEALING COMPOUND SHALL NOT BE PAID FOR SEPARATELY, BUT SHALL BE CONSIDERED INCIDENTAL TO THE CONTRACT.



UPPER FLOOR PLATE DETAILS UNDERPASS
 I.I.R.R. BRIDGE No. F-779
 OVER SOUTH 5TH STREET EXTENDED SPRINGFIELD, ILLINOIS
 PROJECT 106 100 (40)
 SECTION 10X-75B
 SANGAMON COUNTY
 STATION 8+22.70

ALFRED BRESCH & ASSOCIATES
 CONSULTING ENGINEERS
 10 S. WABASH AVE. CHICAGO, ILLINOIS

FILE NAME =	USER NAME = #USER#	DESIGNED -	REVISED -
#FILE#		DRAWN -	REVISED -
		CHECKED -	REVISED -
		DATE -	REVISED -

STATE OF ILLINOIS
 DEPARTMENT OF TRANSPORTATION

084-0033 (FOR INFORMATION ONLY)
 SCALE: SHEET NO. OF SHEETS STA. TO STA.

F.A.P. RTE.	SECTION	COUNTY	TOTAL SHEETS	SHEET NO.
666	D-6 PAINTING 2000	SANGAMON	13	12
2012			CONTRACT NO. 72048	
FED. ROAD DIST. NO. 6 (ILLINOIS) FED. AID PROJECT				