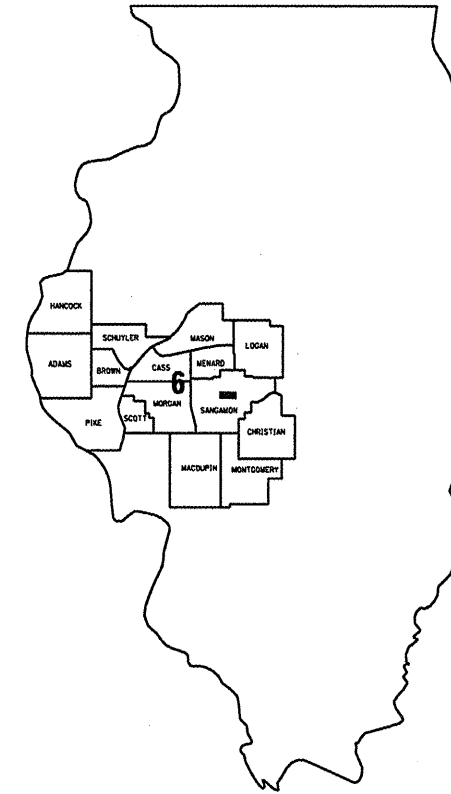


FOR INDEX OF SHEETS AND HIGHWAY STANDARDS, SEE SHEET 2.

STATE OF ILLINOIS
DEPARTMENT OF TRANSPORTATION
DIVISION OF HIGHWAYS

**PLANS FOR PROPOSED
BRIDGE PAINTING
FAP ROUTE 666 (BUS 55)
SECTION D6 PAINTING 2012
SANGAMON COUNTY**

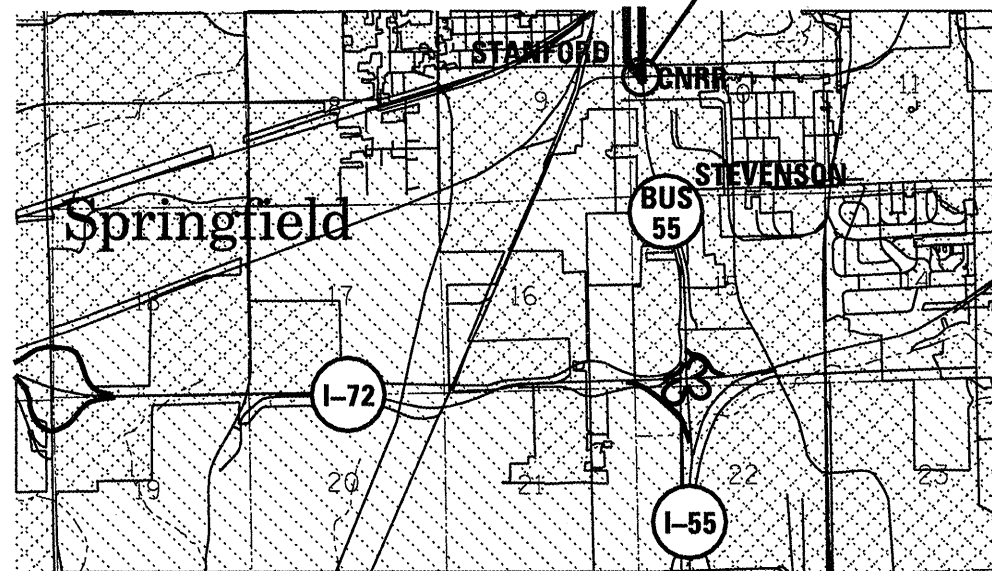
C-96-027-09



LOCATION OF SECTION INDICATED THUS: ■

BRIDGE NO 1 - SN 084-9900 (OVER BUS 55 NB)

BRIDGE NO 2 - SN 084-0033 (OVER BUS 55 SB)



NET LENGTH OF SEC 24 FT=0.005 MILE

J. U. L. I. E.
JOINT UTILITY LOCATION INFORMATION FOR EXCAVATION
1-800-892-0123

BRIDGE INSPECTION ENGINEER: DAVE COPENBARGER
PHONE: (217) 785-5306
BRIDGE MAINTENANCE ENGINEER: STEVE BERAN
PHONE: (217) 785-9290

CONTRACT NO. 72C48

STATE OF ILLINOIS
DEPARTMENT OF TRANSPORTATION
DIVISION OF HIGHWAYS

SUBMITTED March 29 20 11

Roger Z. Onishuk
DEPUTY DIRECTOR OF HIGHWAYS, REGION FOUR ENGINEER

May 13 20 11

Scott E. Stitt, P.E.
acting ENGINEER OF DESIGN AND ENVIRONMENT

May 13 20 11

Christine M. Reed
DIRECTOR, DIVISION OF HIGHWAYS

INDEX OF SHEETS:

- 1 COVER SHEET
- 2 INDEX, HIGHWAY STANDARDS, & GENERAL NOTES
- 3 SUMMARY OF QUANTITIES
- 4-6 EXISTING PLANS, SN 084-9900
- 7-13 EXISTING PLANS, SN 084-0033

STANDARDS

- 701101-02
- 701106-02
- 701601-07
- 701701-07
- 701901-01
- 701801-04

GENERAL NOTES:


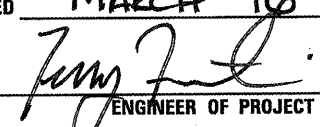
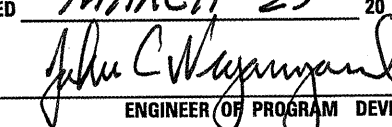
CLEANING AND PAINTING OF THE EXISTING STRUCTURAL STEEL SHALL BE AS SPECIFIED IN THE SPECIAL PROVISIONS FOR "CLEANING AND PAINTING EXISTING STEEL STRUCTURES". THE EXTERIOR OF THE FASCIA BEAMS, INCLUDING THE TOP AND BOTTOM FLANGES, SHALL BE CLEANED PER SSPC SP15, COMMERCIAL POWER TOOL CLEANING. THE EXTERIOR OF THE FASCIA BEAMS, INCLUDING THE TOP AND BOTTOM FLANGES, SHALL BE PAINTED ACCORDING TO THE REQUIREMENTS OF PAINT SYSTEM 1-OZ/EIU. NO OTHER STEEL ON THE STRUCTURES WILL REQUIRE ANY CLEANING OR PAINTING.

THE COLOR OF THE FINAL FINISH COAT FOR EXTERIOR AND BOTTOM FLANGE OF THE FASCIA BEAMS SHALL MATCH FEDERAL COLOR STANDARD 595a 20045

THE SSPC-QP-1 AND SSPC-QP2 PAINTING CONTRACTOR CERTIFICATIONS WILL NOT BE REQUIRED FOR THESE BRIDGES.

THE USE OF AIR MONITORS WILL BE REQUIRED: TWO MONITORS WILL BE REQUIRED FOR EACH BRIDGE.

STRUCTURE NO 1 = 084-9900, STRUCTURE NO 2 = 084-0033

STATE OF ILLINOIS DEPARTMENT OF TRANSPORTATION DIVISION OF HIGHWAYS DISTRICT 6	
EXAMINED	March 21 20 11  ENGINEER OF OPERATIONS
EXAMINED	MARCH 16 20 11  ENGINEER OF PROJECT IMPLEMENTATION
EXAMINED	MARCH 23 20 11  ENGINEER OF PROGRAM DEVELOPMENT

INDEX, STANDARDS, & NOTES
FAP 666 (BUS 55)
D6 PAINTING 2012
SANGAMON COUNTY

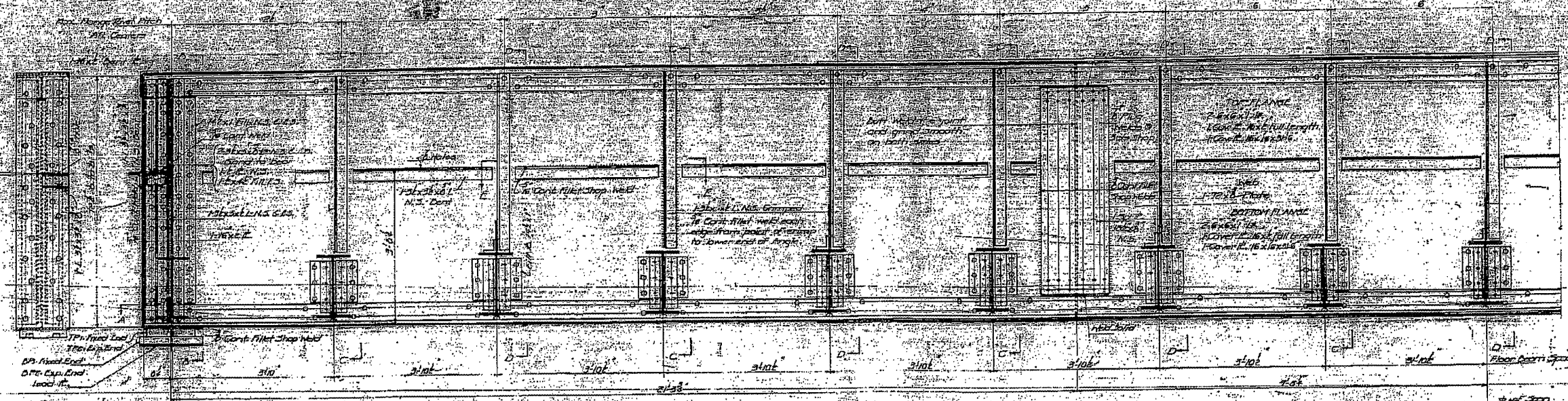
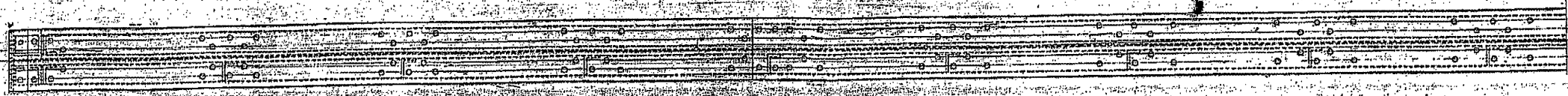
S U M M A R Y O F Q U A N T I T I E S

CODE NO.	ITEM	UNIT	URBAN
			100% STATE
			0014
			TOTAL QTY
67100100	MOBILIZATION	L SUM	1
70102630	TRAFFIC CONTROL AND PROTECTION, STANDARD 701601	L SUM	1
70102635	TRAFFIC CONTROL AND PROTECTION, STANDARD 701701	L SUM	1
Z0010501	CLEANING AND PAINTING STEEL BRIDGE NO. 1	L SUM	1
Z0010502	CLEANING AND PAINTING STEEL BRIDGE NO. 2	L SUM	1
Z0007101	CONTAINMENT AND DISPOSAL OF LEAD PAINT CLEANING RESIDUES NO. 1	L SUM	1
Z0007102	CONTAINMENT AND DISPOSAL OF LEAD PAINT CLEANING RESIDUES NO. 2	L SUM	1
70106800	CHANGEABLE MESSAGE SIGNS	CAL MO	2
70102640	TRAFFIC CONTROL AND PROTECTION, STANDARD 701801	L SUM	1
Z0048665	RAILROAD PROTECTIVE LIABILITY INSURANCE	L SUM	1
70200100	NIGHTIME WORK ZONE LIGHTING	L SUM	1

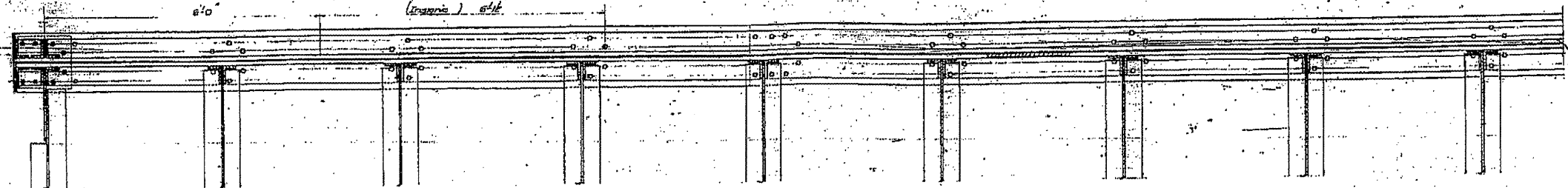
QUANTITIES
FAP 666 (BUS 55)
D6 PAINTING 2012
SANGAMON COUNTY

STATE OF ILLINOIS
DEPARTMENT OF PUBLIC WORKS & BUILDINGS
DIVISION OF HIGHWAYS

SECTION	COUNTY	TOTAL SHEETS	SHEET NO.
126	Sangamon	13	5



ELEVATION
Scale: 1/4" = 1'-0"



SECTION A

NOTE
Under symmetrical about center of span except for center girder angles.

Approx. Height of Structure shown in completed span 20000 lbs.

DESIGNED BY: August 22, 1947
DRAWN BY: [Signature]
CHECKED BY: [Signature]
DATE: [Signature]

T.P.G. SPAN
GRADE SEPARATION
ILLINOIS TERMINAL RAILROAD
SOUTH 6TH STREET (U.S. 66)
SPRINGFIELD ILLINOIS
PRO. FEAS. 1166 (19)
F.A. ROUTE 5 - SEC. 110-5B F
SANGAMON COUNTY

FILE NAME =	USER NAME = #USER#	DESIGNED -	REVISED -
#FILE#		DRAWN -	REVISED -
	PLOT SCALE = #SCALE#	CHECKED -	REVISED -
	PLOT DATE = #DATE#	DATE -	REVISED -

STATE OF ILLINOIS
DEPARTMENT OF TRANSPORTATION

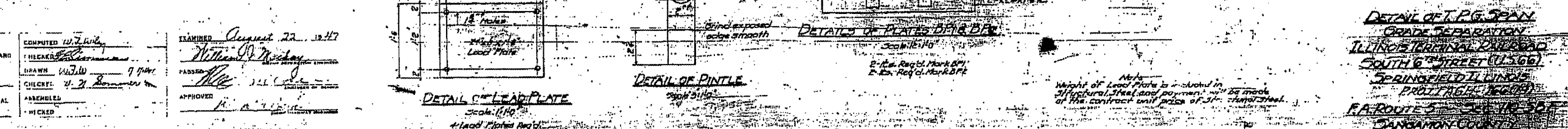
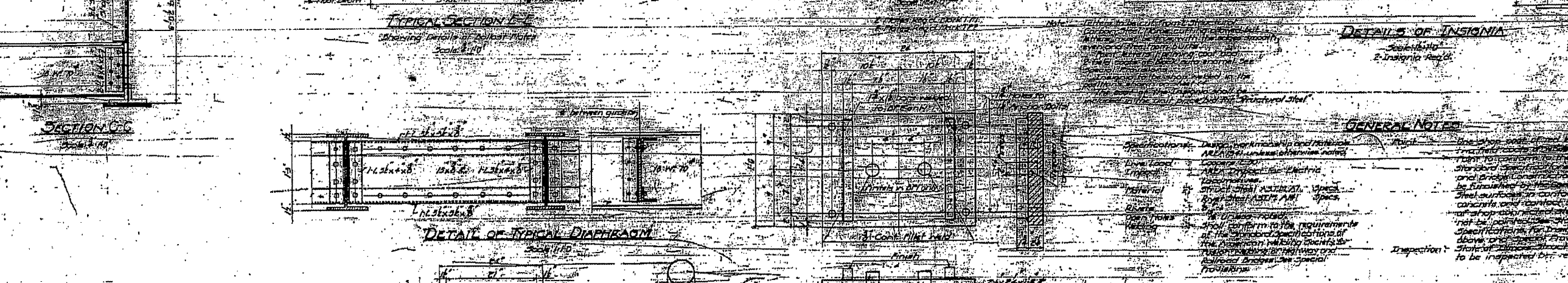
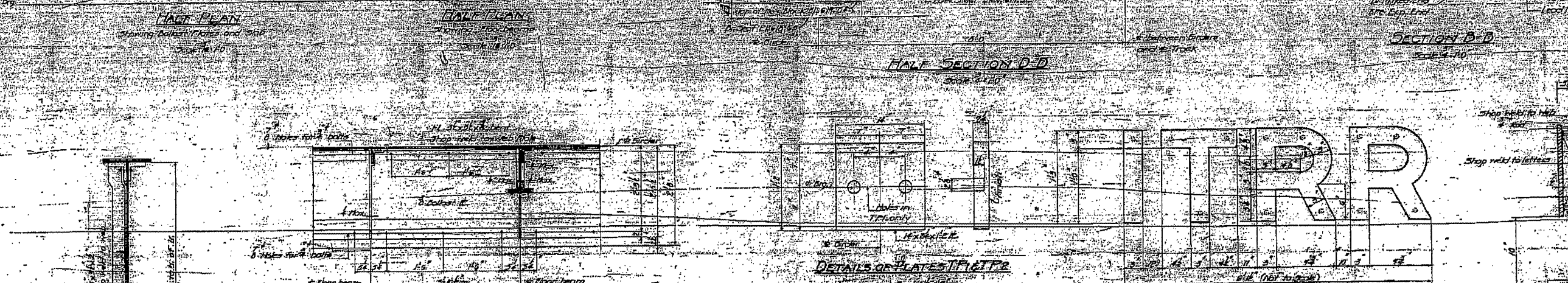
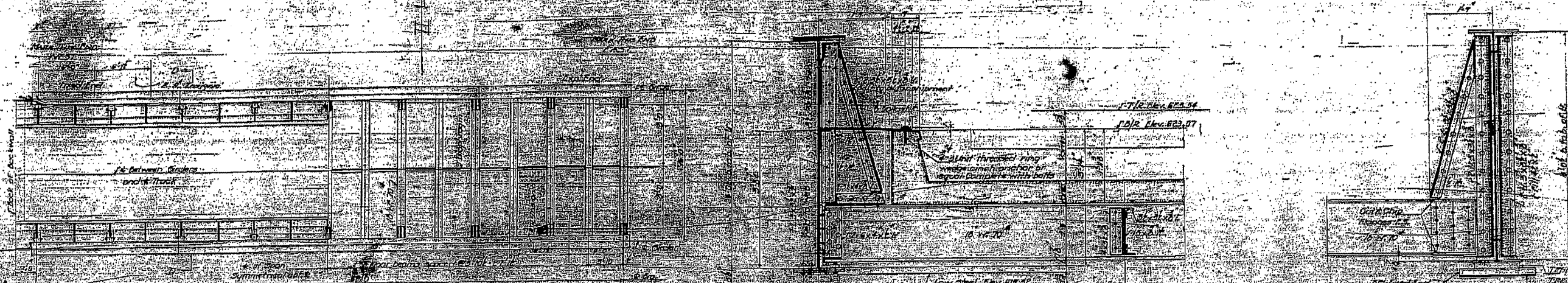
084-8900 (FOR INFORMATION ONLY)

SCALE: SHEET NO. OF SHEETS STA. TO STA.

F.A.P. RTE.	SECTION	COUNTY	TOTAL SHEETS	SHEET NO.
656	D-6 PAINTING 2068	SANGAMON	13	5
			2012	CONTRACT NO. 72C48
FED. ROAD DIST. NO. 6 ILLINOIS FED. AID PROJECT				

STATE OF ILLINOIS
DEPARTMENT OF PUBLIC WORKS & BUILDINGS
DIVISION OF HIGHWAYS

SECTION	COUNTY	TOTAL SHEETS	SHEET NO.
D-5 PAINTING	SANGAMON	13	6



GENERAL NOTES

1. Bridge workmanship and materials shall conform to the requirements of the American Institute of Steel Construction, Inc. Specification for Structural Steel, 1946 Edition, and to the requirements of the American Railway Engineering and Maintenance-of-Way Association, Special Publication No. 10, 1943 Edition.
2. Inspection: The contractor shall be responsible for the inspection of the work and shall submit a report of inspection to the Engineer before painting.

COMPUTED BY: *W. J. Kelly*
DRAWN BY: *W. J. Kelly*
CHECKED BY: *W. J. Kelly*
ASSEMBLED BY: *W. J. Kelly*

EXAMINED: *August 22, 1947*
PASSED BY: *William P. Mackay*
APPROVED BY: *W. J. Kelly*

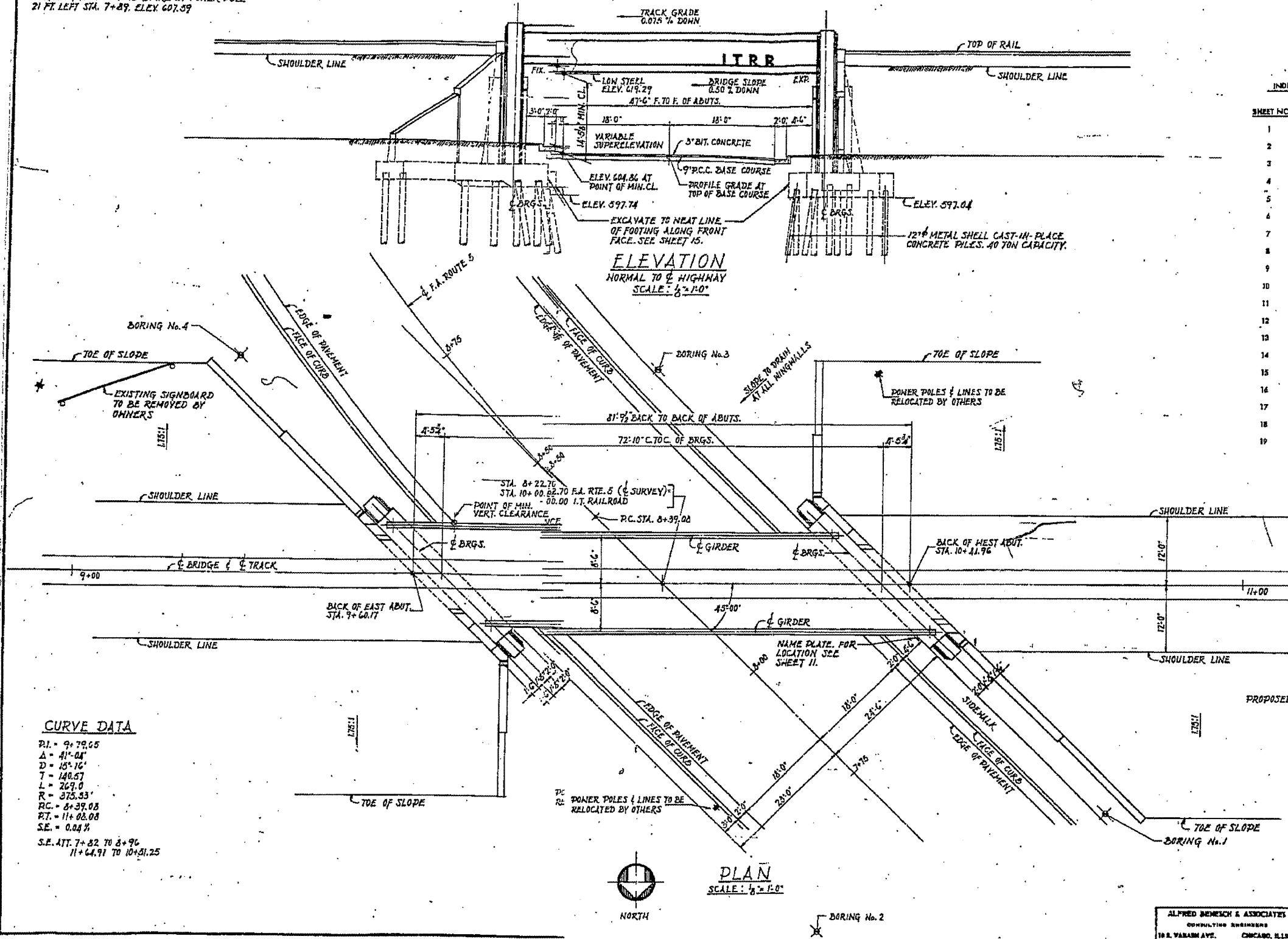
DETAIL OF P.G. SPAN
GRADE SEPARATION
ILLINOIS TERMINAL RAILROAD
SOUTH 6TH STREET (U.S. 50)
SPRINGFIELD, ILLINOIS
PROLTRAHS, INC. (1947)
P.A. ROUTE 5, BOX 304
SANGAMON, ILLINOIS

FILE NAME =	USER NAME = *USER*	DESIGNED -	REVISED -	STATE OF ILLINOIS DEPARTMENT OF TRANSPORTATION	084-9900 (FOR INFORMATION ONLY)	SCALE: _____ SHEET NO. _____ OF _____ SHEETS STA. _____ TO STA. _____	R.A.P. RTE.	SECTION	COUNTY	TOTAL SHEETS	SHEET NO.
#FILE#	PLLOT SCALE = *SCALE*	DRAWN -	REVISED -				666	D-5 PAINTING 2000-	SANGAMON	13	6
	PLLOT DATE = *DATE*	CHECKED -	REVISED -					2012	CONTRACT NO. T2C48		
		DATE	REVISED				FED. ROAD DIST. NO. 6 (ILLINOIS) FED. AID PROJECT				

BENCH MARK N-1
HORIZONTAL RAILROAD SPIKE IN POWER POLE
21 FT. LEFT STA. 7+89. ELEV. 607.59

084-0033

SECTION	COUNTY	TOTAL SHEETS	SHEET NO.
F.A. 5	SANGAMON	25	5
SHEET 1 OF 19			

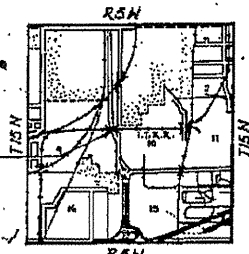


INDEX OF BRIDGE PLANS

SHEET NO.	DESCRIPTION
1	GENERAL PLAN & ELEVATION
2	BORINGS, PROFILES, GENERAL NOTES, DESIGN DATA & QUANTITIES
3	STEEL FRAMING PLAN
4	GIRDER DETAILS
5	TYPICAL DECK CROSS SECTION
6	END FLOOR BEAM
7	UPPER FLOOR PLATE DETAILS
8	FLOOR PLATE DETAILS
9	BEARINGS
10	ABUTMENT FOOTING PLAN
11	WEST ABUTMENT
12	EAST ABUTMENT
13	ABUTMENT DETAILS
14	REINFORCEMENT BAR LISTS
15	EXCAVATION & DRAINAGE DETAILS
16	PLAN & ELEVATION OF TEMPORARY TRESTLE
17	TEMPORARY TRESTLE STEEL SPAN DETAILS
18	TEMPORARY TRESTLE DETAILS
19	TEMPORARY TRESTLE DETAILS

CURVE DATA

PI = 9+79.65
Δ = 41°-04'
D = 15°-16'
T = 140.57
L = 269.0
R = 375.35
P.C. = 8+39.08
P.T. = 11+08.08
S.E. = 0.04%
S.E. ATT. 7+82 TO 8+96
11+64.91 TO 10+51.25



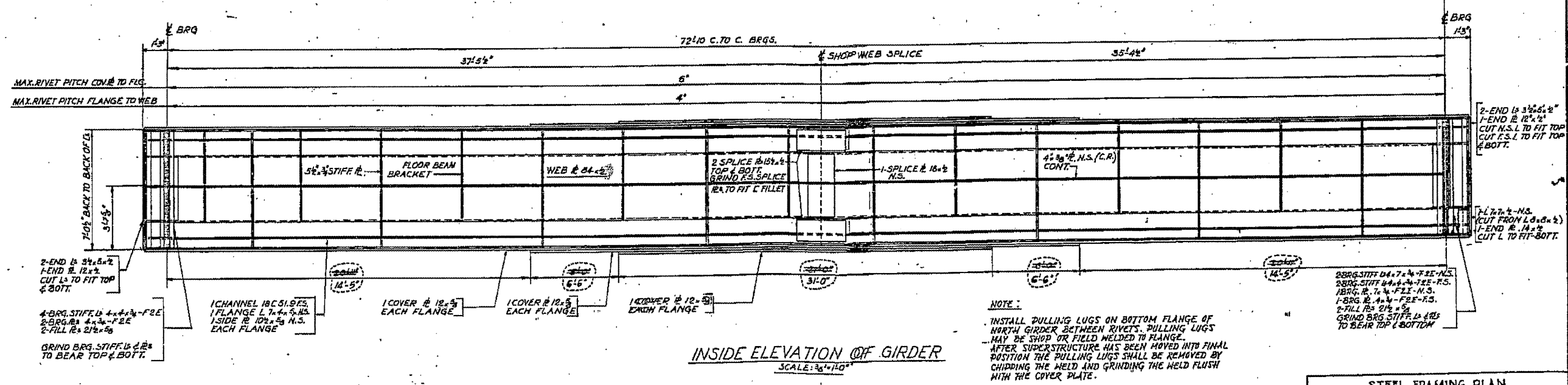
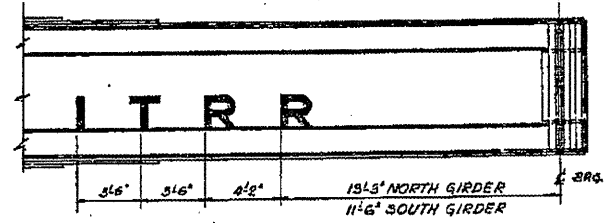
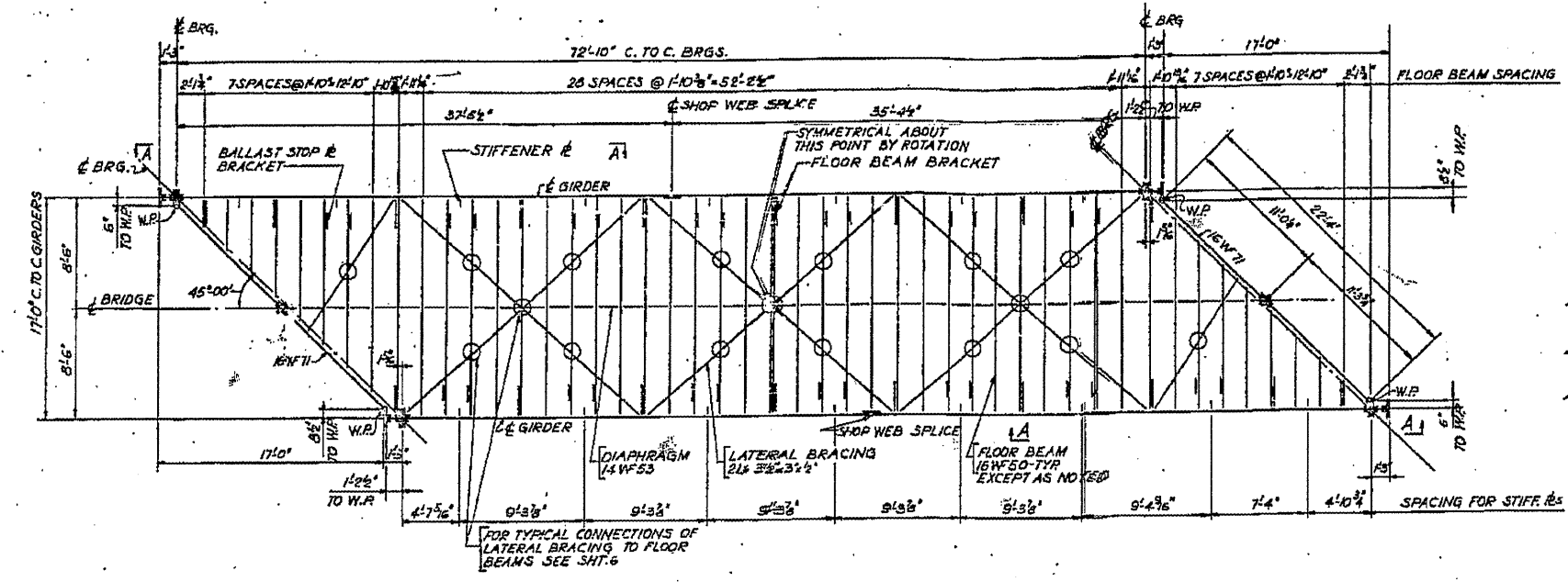
LOCATION PLAN
084-0033

GENERAL PLAN & ELEVATION
UNDERPASS
I.T.R.R. BRIDGE No. F-77.5
OVER SOUTH 5TH STREET EXTENDED SPRINGFIELD, ILLINOIS
PROJECT UG 166(40)
F.A. ROUTE 5 SECTION 110X-75B
SANGAMON COUNTY
STATION 8+22.70

ALFRED BENECH & ASSOCIATES
CONSULTING ENGINEERS
10 S. PARSON AVENUE CHICAGO, ILLINOIS

FILE NAME	USER NAME	DESIGNED	REVISIONS	STATE OF ILLINOIS DEPARTMENT OF TRANSPORTATION	084-0033 (FOR INFORMATION ONLY)	F.A.P. RTE.	SECTION	COUNTY	TOTAL SHEETS	SHEET NO.
FILE14	#USER#	---	---			666	D-6 PAINTING 2906'	SANGAMON	13	7
	PLOT SCALE = #SCALE#	CHECKED	REVISIONS				2024			CONTRACT NO. T2C48
	PLOT DATE = #DATE#	DATE	REVISIONS							FED. ROAD DIST. NO. 6 ILLINOIS FED. AID PROJECT

ROUTE NO.	SECTION	COUNTY	TOTAL SHEETS	SHEET NO.
F.A. 5	10X-75B	SAHGLIUM	25	7
STA. TO STA.		PROJECT		
SHEET 3 of 19				



STEEL FRAMING PLAN
UNDERPASS
I.T.R.R. BRIDGE No. F-71.5
OVER SOUTH 5th STREET EXTENDED SPRINGFIELD, ILLINOIS
PROJECT UG 166 (40)
F.A. ROUTE 5 SECTION 10X-75 B
SANGAMON COUNTY
STATION 8+72.70

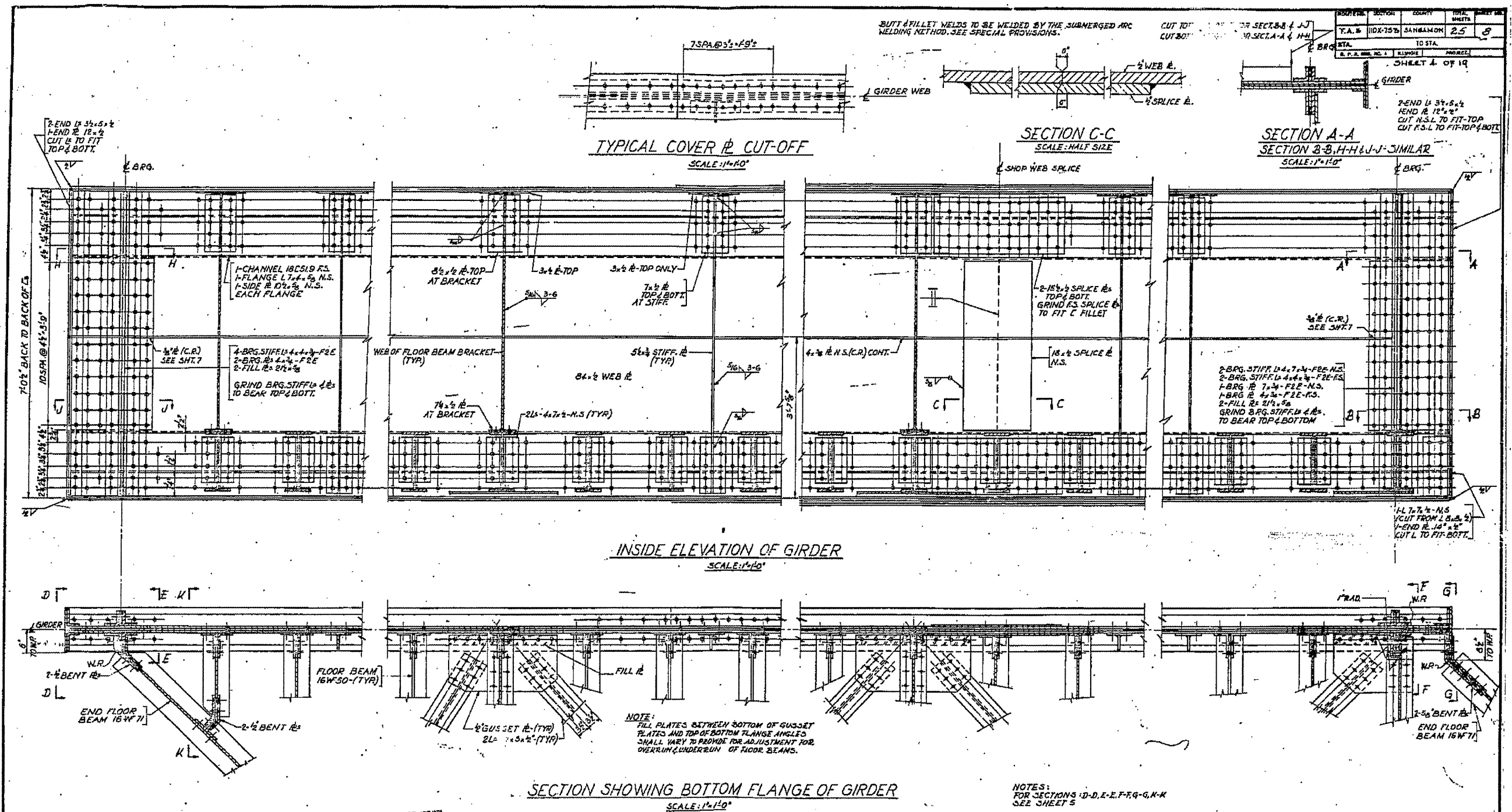
ALFRED BEMECK & ASSOCIATES
CONSULTING ENGINEERS
10 S. WABASH AVE. CHICAGO, ILLINOIS

FILE NAME =	USER NAME = #USER#	DESIGNED -	REVISED -
*FILE#		DRAWN -	REVISED -
		CHECKED -	REVISED -
		DATE -	REVISED -

STATE OF ILLINOIS
DEPARTMENT OF TRANSPORTATION

084-0033 (FOR INFORMATION ONLY)	SCALE: _____	SHEET NO. _____ OF _____ SHEETS	STA. _____ TO STA. _____
---------------------------------	--------------	---------------------------------	--------------------------

F.A.P. RITE.	SECTION	COUNTY	TOTAL SHEETS	SHEET NO.
666	D-6 PAINTING 2008-	SANGAMON	13	8
2012		CONTRACT NO. T2C48		
FED. ROAD DIST. NO. 6 ILLINOIS FED. AID PROJECT				

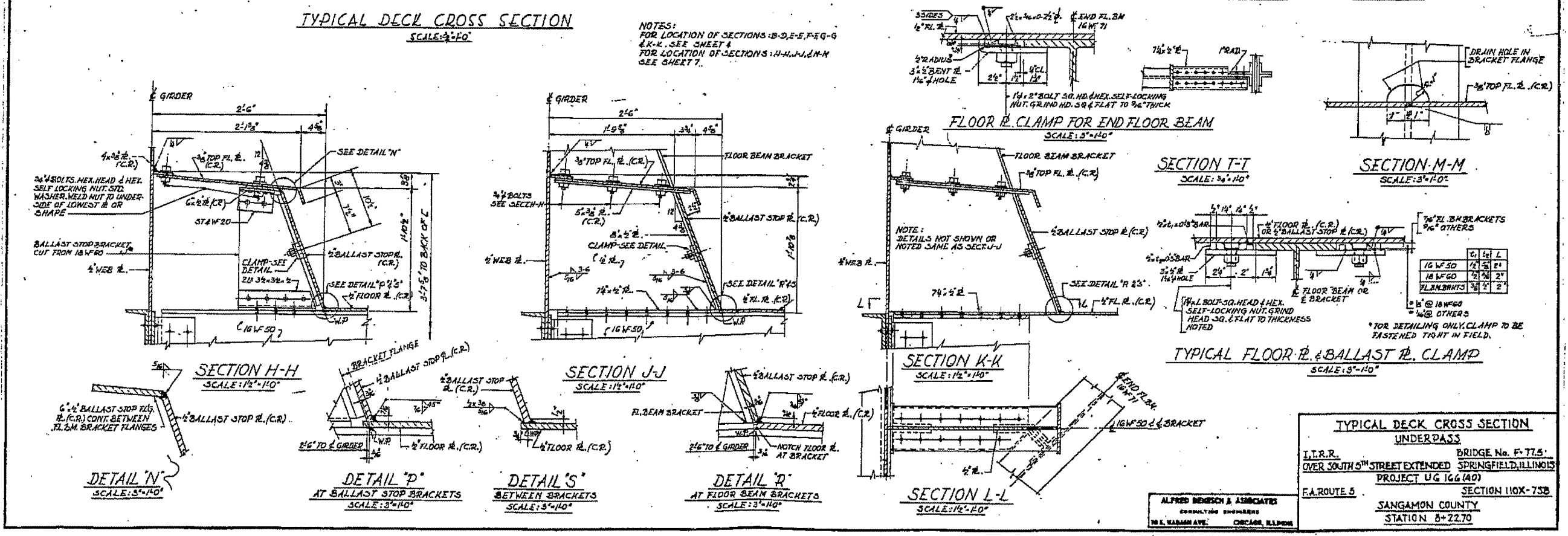
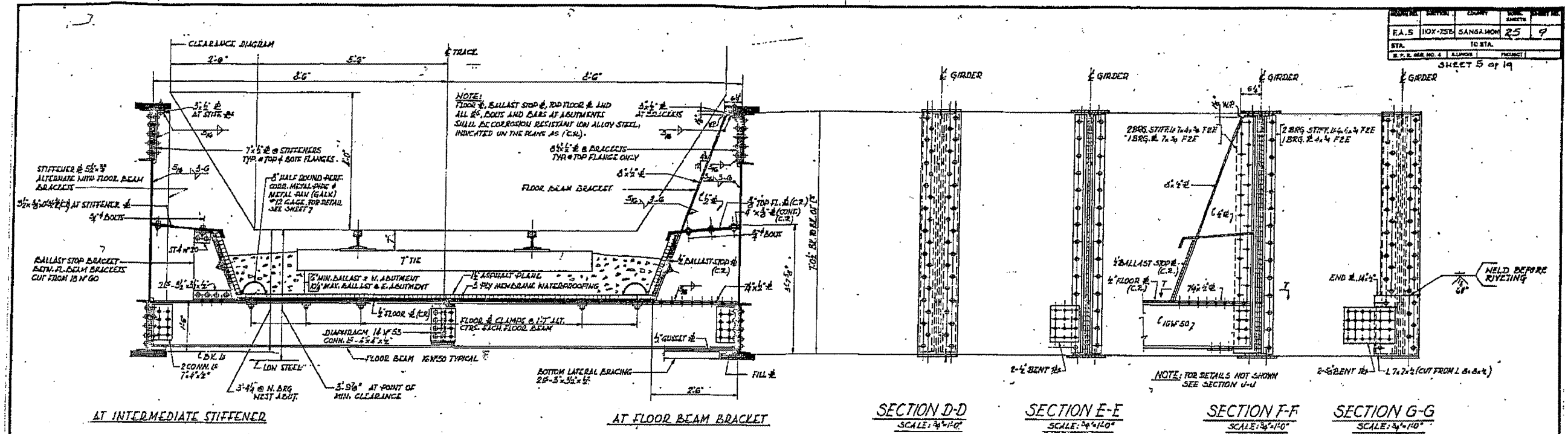


GIRDER DETAILS
UNDERPASS
I.T.R.B. BRIDGE No. F-77.5
OVER SOUTH 9TH STREET EXTENDED SPRINGFIELD, ILLINOIS
PROJECT UG 16640
F.A. ROUTE 5 SECTION 110X-7SD
SANGAMON COUNTY
STATION 8+22.70

ALFRED BENESCH & ASSOCIATES
CONSULTING ENGINEERS
10 S. WABASH AVE. CHICAGO, ILLINOIS

FILE NAME	USER NAME	DESIGNED	REVISOR	STATE OF ILLINOIS DEPARTMENT OF TRANSPORTATION	084-0033 (FOR INFORMATION ONLY)	F.A.P. RTE.	SECTION	COUNTY	TOTAL SHEET NO.	
#FILE#		DRAWN	REVISOR			566	D-6 PAINTING 2008	SANGAMON	13	9
		CHECKED	REVISOR			2012 CONTRACT NO. T2C48				
		DATE	REVISOR			FED. ROAD DIST. NO. 6 (ILLINOIS) FED. AID PROJECT				

PROJECT NO.	SECTION	COUNTY	SHEET NO.	TOTAL SHEETS
E.A.S. 110X-75B	SANGAMON	25	9	
SHEET 5 OF 19				



TYPICAL DECK CROSS SECTION UNDERPASS

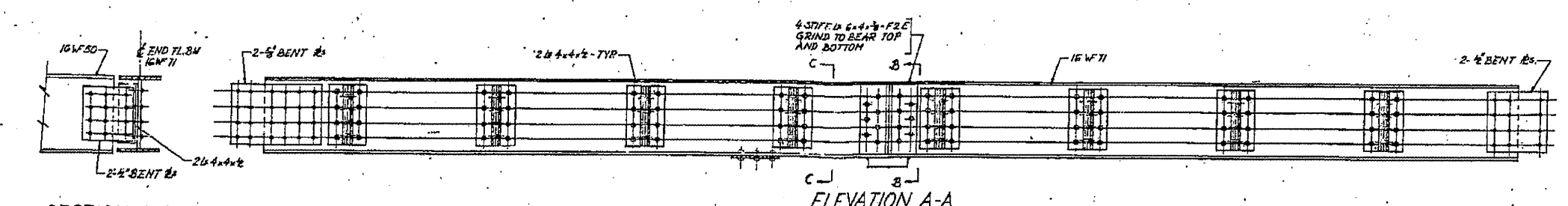
I.T.R.R. BRIDGE No. F-77.5
OVER SOUTH 5TH STREET EXTENDED SPRINGFIELD, ILLINOIS
PROJECT UG 166 (40)

F.A. ROUTE 5 SECTION 110X-75B
SANGAMON COUNTY
STATION 8+22.70

ALFRED BENECH & ASSOCIATES
CONSULTING ENGINEERS
101 N. WASHINGTON ST. CHICAGO, ILLINOIS

FILE NAME =	USER NAME = #USER#	DESIGNED -	REVISED -	STATE OF ILLINOIS DEPARTMENT OF TRANSPORTATION	084-0033 (FOR INFORMATION ONLY)	F.A.P. RTE.	SECTION	COUNTY	TOTAL SHEETS	SHEET NO.
#FILE#		DRAWN -	REVISED -			665	D-6 PAINTING	SANGAMON	13	10
		CHECKED -	REVISED -			2017		CONTRACT NO. 72048		
		DATE -	REVISED -			FED. ROAD DIST. NO. 6 ILLINOIS FED. AID PROJECT				

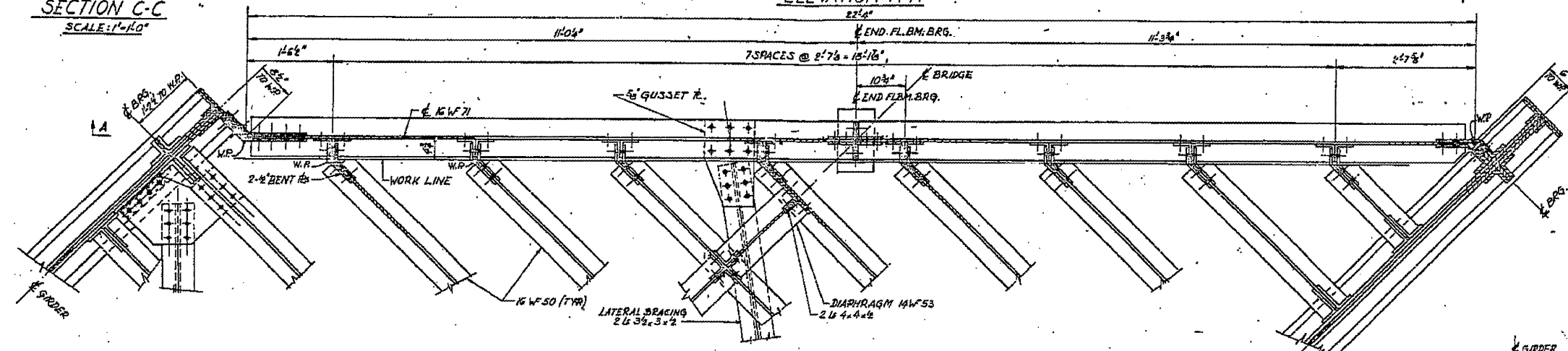
ROUTE NO.	SECTION	COUNTY	TOTAL SHEETS
F.A.S.	110X-75B	SANGAMON	25
STA.	TO STA.		10
E.P. & M. NO.	ILLINOIS	PROJECT	



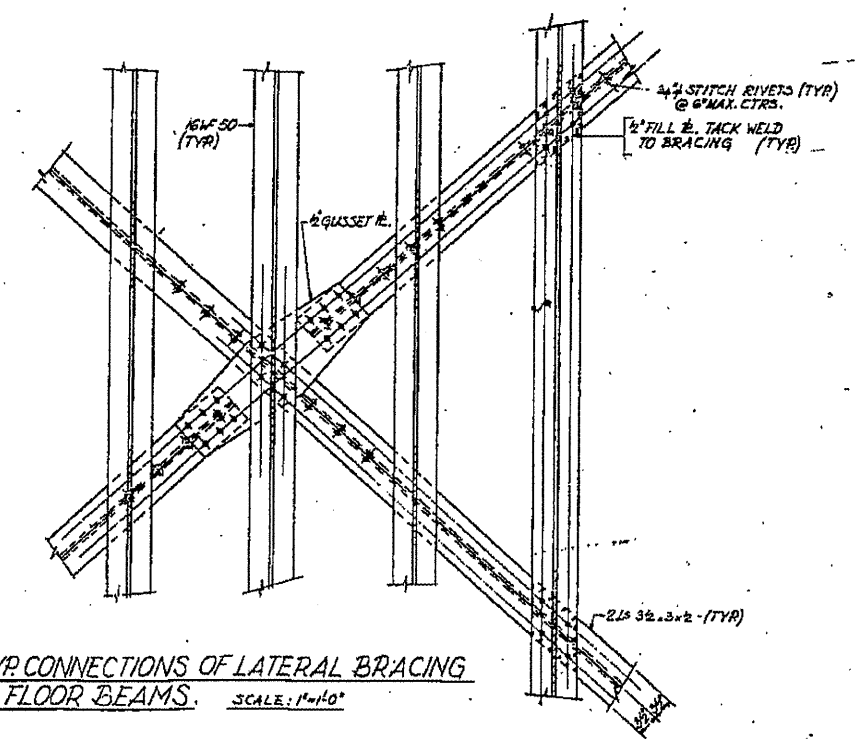
SECTION C-C
SCALE: 1"=10'

ELEVATION A-A

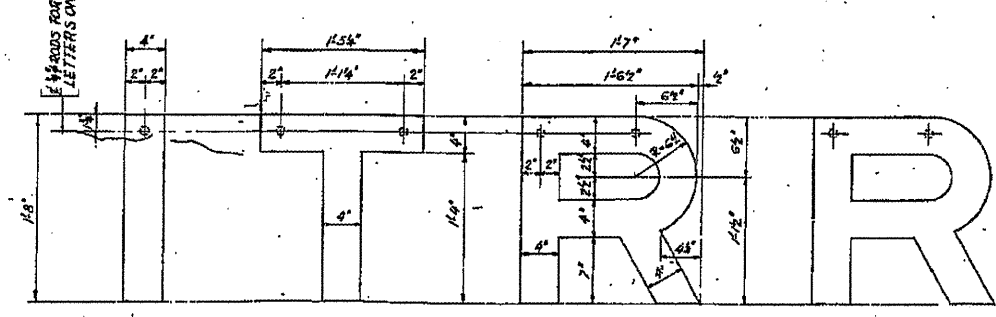
SECTION B-B
SCALE: 1"=10'



PLAN OF END FLOOR BEAM
SCALE: 1"=10'

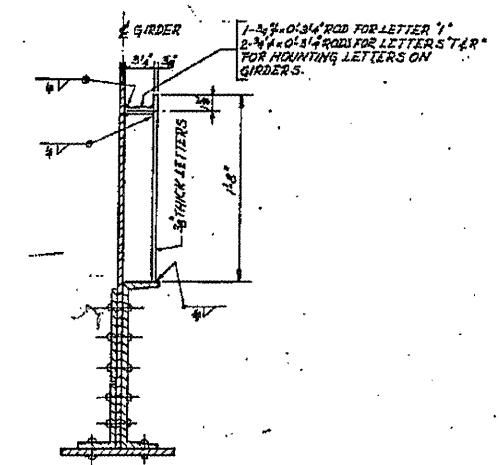


TYP CONNECTIONS OF LATERAL BRACING TO FLOOR BEAMS.
SCALE: 1"=10'



DETAIL OF LETTERS
ONE SET TO BE MOUNTED ON EACH GIRDER
SCALE: 1/4"=10'

NOTE:
L.T.R.R. LETTERS TO BE CUT FROM 3/8" STRUCTURAL STEEL PLATES. LETTERS MAY BE FLAME CUT, BUT EDGES MUST BE GRIND TRUE, SMOOTH AND EVEN. LETTERS SHALL BE GIVEN ONE SHOP COAT OF PAINT, SAME AS STRUCTURAL STEEL AND TWO FIELD COATS OF BLACK AUTO ENAMEL. LETTERS AND RODS FOR MOUNTING ENBLEM ON GIRDERS SHALL BE INCLUDED IN THE CONTRACT UNIT PRICE FOR RAILROAD ENBLEMS.
FOR LOCATION OF LETTERS SEE SECT. A-A, SHEET 8.



SECTION THRU LETTER AT GIRDERS
SCALE: 1/4"=10'

END FLOOR BEAM UNDERPASS			
L.T.R.R.	BRIDGE No. F-71.5		
OVER SOUTH 5 TH STREET EXTENDED	SPRINGFIELD, ILLINOIS		
PROJECT UG 166(40)			
F.A. ROUTE 5	SECTION 110X-75B		
SANGAMON COUNTY		STATION 8+22.70	

ALFRED BENECH & ASSOCIATES
CONSULTING ENGINEERS
19 E. WABASH AVE. CHICAGO, ILLINOIS

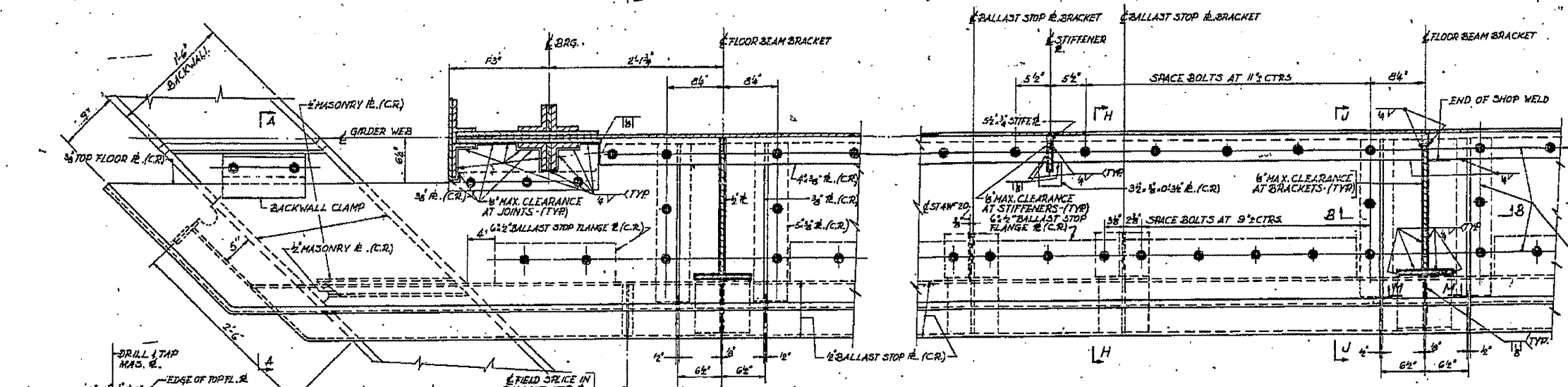
FILE NAME = #FILE#	USER NAME = #USER#	DESIGNED -	REVISED -
		DRAWN -	REVISED -
		CHECKED -	REVISED -
		DATE -	REVISED -

STATE OF ILLINOIS
DEPARTMENT OF TRANSPORTATION

084-0033 (FOR INFORMATION ONLY)
SCALE: SHEET NO. OF SHEETS STA. TO STA.

F.A.P. RTE.	SECTION	COUNTY	TOTAL SHEETS
86E	D-6 PAINTING 2000	SANGAMON	13
	2012		11
FED. ROAD DIST. NO. 6 ILLINOIS FED. AID PROJECT			CONTRACT NO. 72048

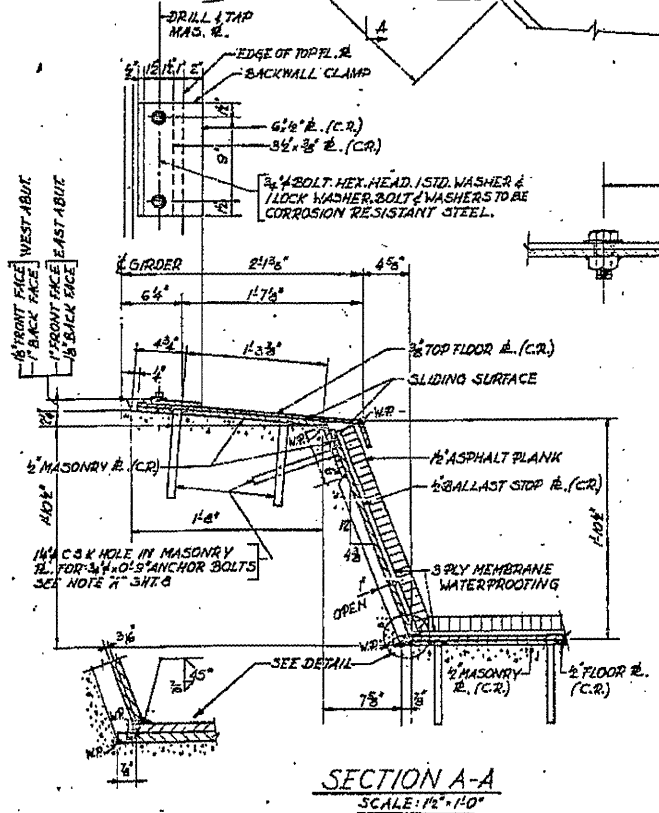
ROUTE NO.	SECTION	COUNTY	TOTAL SHEETS	SHEET NO.
EA. 5	10X-75B	SANGAMON	25	12
STA.	TO STA.			
F.P.R. DIST. NO. 6	ILLINOIS	PROJECT		
SHEET 7 OF 19				



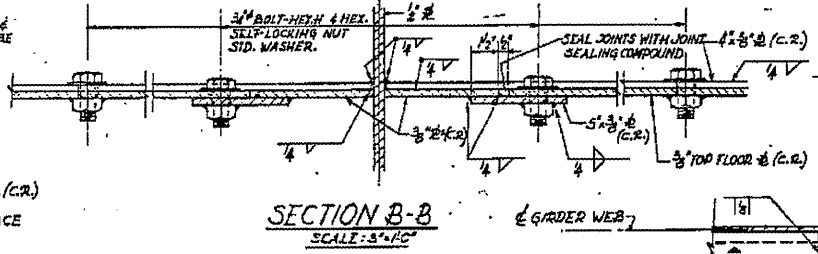
PARTIAL PLAN OF TOP FLOOR PLATE
SCALE: 1/2" = 1'-0"

NOTES:
FOR SECTIONS H-H, J-J, M-M
SEE SHEET 5.

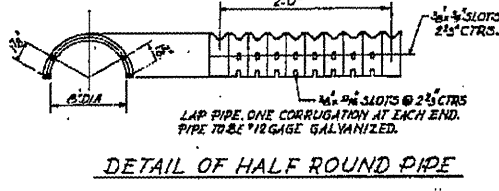
NOTE:
JOINTS IN TOP FLOOR PLATE SHALL BE SEALED WITH A GUN GRADE, GREY, TWO COMPONENT NON-STAINING SEALING COMPOUND WITH POLYSULFIDE LIQUID POLYMERS AFTER THE STRUCTURE HAS BEEN FIELD PAINTED. THE COST OF FURNISHING AND APPLYING THE SEALING COMPOUND SHALL NOT BE PAID FOR SEPARATELY, BUT SHALL BE CONSIDERED INCIDENTAL TO THE CONTRACT.



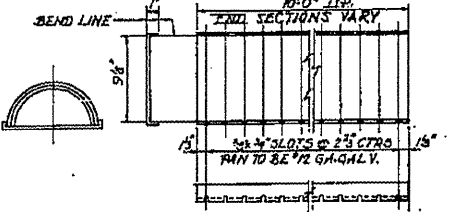
SECTION A-A
SCALE: 1/2" = 1'-0"



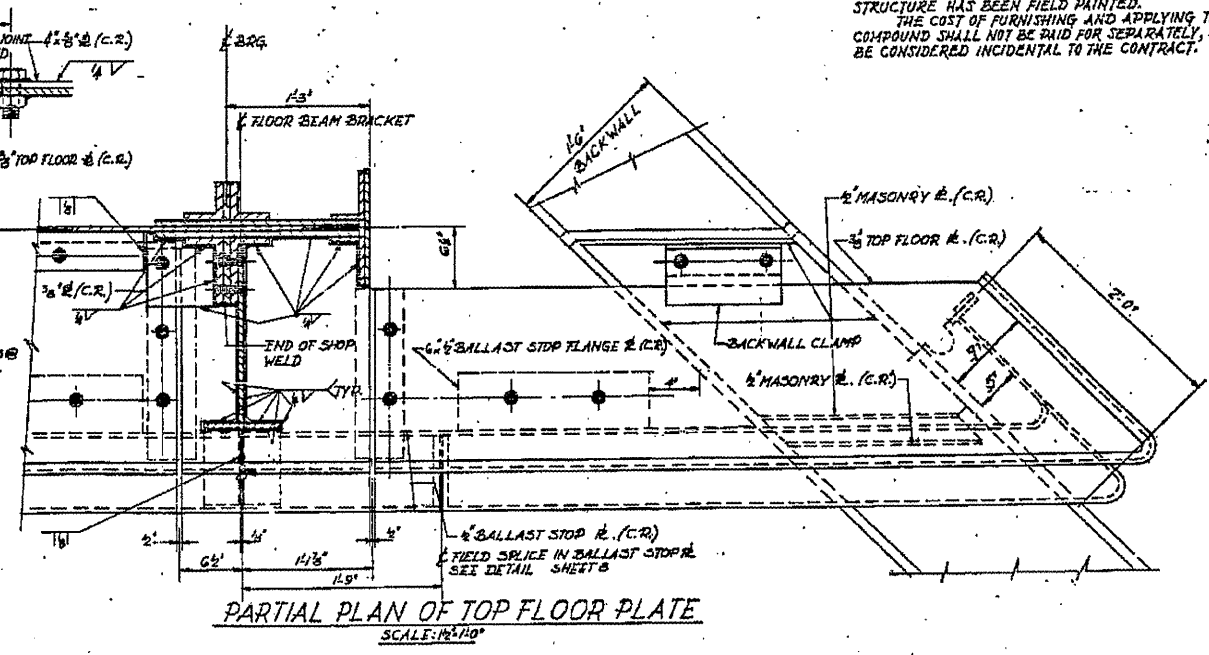
SECTION B-B
SCALE: 3/4" = 1'-0"



DETAIL OF HALF ROUND PIPE



DETAILS OF DECK DRAIN



PARTIAL PLAN OF TOP FLOOR PLATE
SCALE: 1/2" = 1'-0"

UPPER FLOOR PLATE DETAILS			
UNDERPASS			
I.T.R.R.	BRIDGE No. F-779		
OVER SOUTH 5 TH STREET EXTENDED SPRINGFIELD, ILLINOIS			
PROJECT 106 100 (40)			
EA. ROUTE 5	SECTION 10X-75B		
SANGAMON COUNTY			
STATION 8+22.70			

ALFRED BRESCH & ASSOCIATES
CONSULTING ENGINEERS
10 S. WILSON AVE. CHICAGO, ILLINOIS

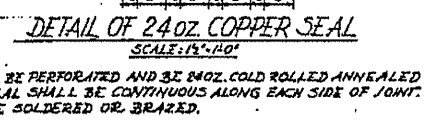
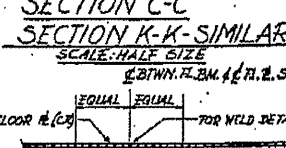
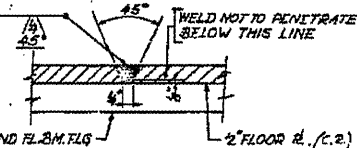
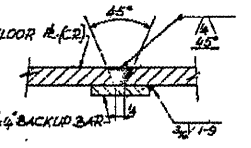
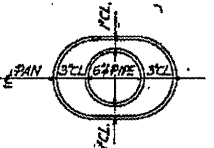
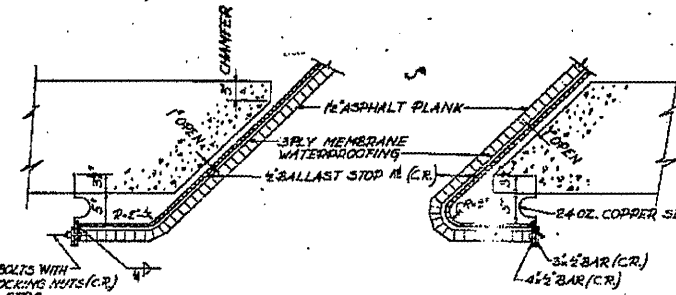
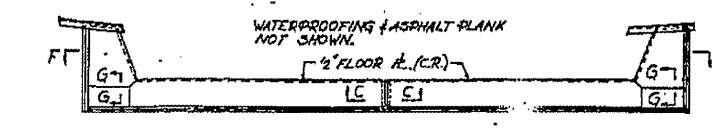
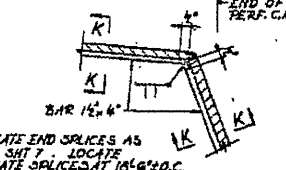
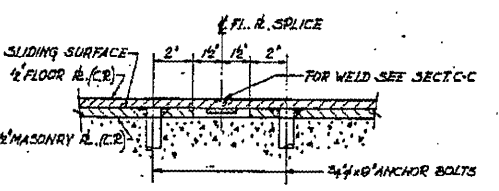
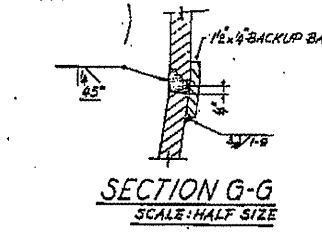
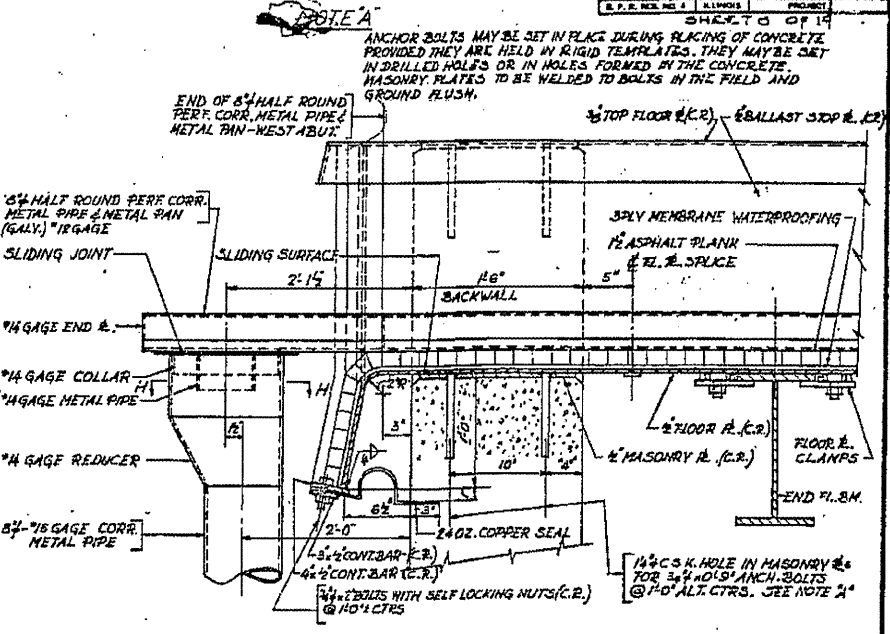
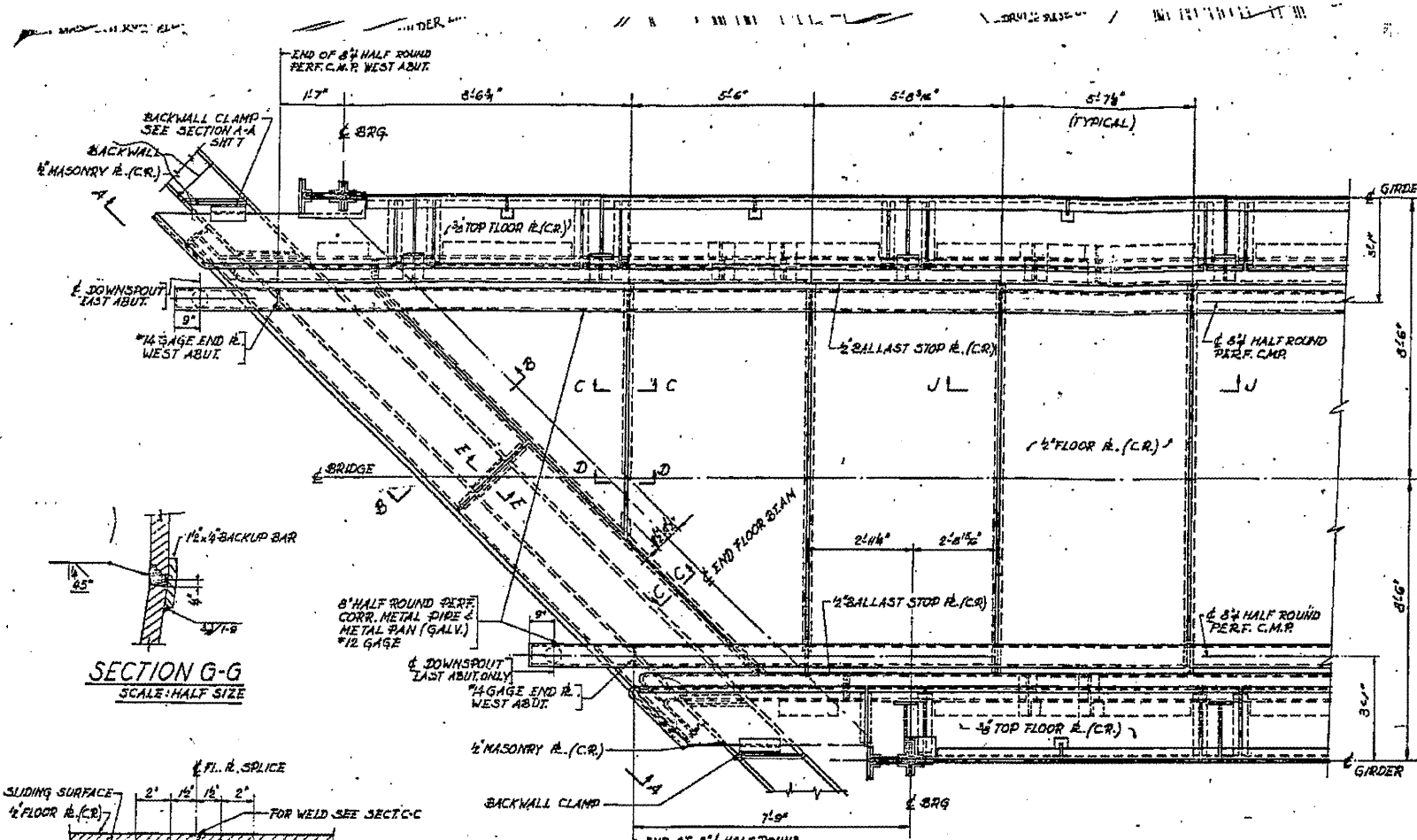
FILE NAME =	USER NAME = #USER#	DESIGNED -	REVISED -
#FILE#		DRAWN -	REVISED -
		CHECKED -	REVISED -
		DATE -	REVISED -

STATE OF ILLINOIS
DEPARTMENT OF TRANSPORTATION

084-0033 (FOR INFORMATION ONLY)			
SCALE:	SHEET NO. OF SHEETS	STA.	TO STA.

F.A.P. RTE.	SECTION	COUNTY	TOTAL SHEETS	SHEET NO.
666	D-6 PAINTING 2000	SANGAMON	13	12
2012				CONTRACT NO. 72048
FED. ROAD DIST. NO. 6 (ILLINOIS) FED. AID PROJECT				

SECTION	COUNTY	TOTAL SHEETS	SHEET NO.
E.A. 5	SANGAMON	25	12
STA.	TO STA.	PROJECT	
		SECTION 110X-735	



FLOOR PLATE DETAILS			
UNDERPASS			
I.T.R.R.	BRIDGE No. F-17.5		
OVER SOUTH 5TH STREET EXTENDED	SPRINGFIELD, ILLINOIS		
PROJECT UG 166 (40)			
F.A. ROUTE 5	SECTION 110X-735		
SANGAMON COUNTY			
STATION 8+22.70			

ALPHEUS BISHOP & ASSOCIATES
CONSULTING ENGINEERS
101 N. WASHINGTON ST. CHICAGO, ILLINOIS

NOTE:
COPPER SEAL SHALL BE PERFORATED AND BE 24 OZ. COLD ROLLED ANNEALED COPPER. COPPER SEAL SHALL BE CONTINUOUS ALONG EACH SIDE OF JOINT. SPLICES SHALL BE SOLDERED OR BRAZED.

FILE NAME =	USER NAME = #USER#	DESIGNED -	REVISED -
#FILE#.F		DRAWN -	REVISED -
		CHECKED -	REVISED -
		DATE -	REVISED -

STATE OF ILLINOIS
DEPARTMENT OF TRANSPORTATION

084-0033 (FOR INFORMATION ONLY)	SCALE:	SHEET NO. OF SHEETS	STA. TO STA.
---------------------------------	--------	---------------------	--------------

F.A.P. RITE	SECTION	COUNTY	TOTAL SHEETS	SHEET NO.
666	D-6 PAINTING 2008	SANGAMON	13	13
2012		CONTRACT NO. 72048		
FED. ROAD DIST. NO. 6 (ILLINOIS) FED. AID PROJECT				