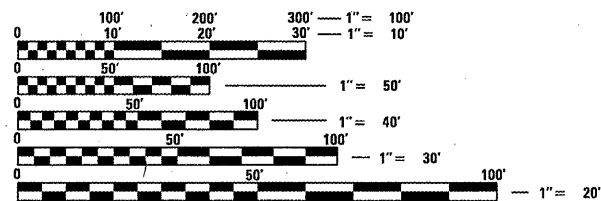


# INDEX OF SHEETS

- 1 COVER SHEET
- 2 GENERAL NOTES
- 3-6 SUMMARY OF QUANTITIES
- 7-17 TYPICAL CROSS SECTIONS
- 18-35 SCHEDULE OF QUANTITIES
- 36-55 PLAN SHEETS
- 56-64 PAVEMENT MARKING SHEETS
- 65-66 BUTT-JOINT DETAILS
- 67-69 ROADWAY SUPERELEVATION SHEETS
- 70 ENTRANCE DETAILS
- 71 SIDEWALK/DETECTABLE WARNING DETAILS
- 72-73 FRAME & GRATE ADJUSTMENT DETAILS
- 74-82 TRAFFIC SIGNALIZATION SHEETS

# STANDARDS

|           |           |
|-----------|-----------|
| 000001-06 | 701326-04 |
| 001001-02 | 701502-04 |
| 001006    | 701602-05 |
| 406201-01 | 701701-07 |
| 424001-05 | 701801-04 |
| 442201-03 | 701901-01 |
| 482001-02 | 720001-01 |
| 630301-05 | 720006-02 |
| 635006-03 | 728001-01 |
| 701001-02 | 780001-02 |
| 701006-03 | 781001-03 |
| 701201-04 | 877001-04 |
| 701301-04 | 878001-08 |
| 701306-03 | 880006-01 |
| 701311-03 |           |



FULL SIZE PLANS HAVE BEEN PREPARED USING STANDARD ENGINEERING SCALES. REDUCED SIZED PLANS WILL NOT CONFORM TO STANDARD SCALES. IN MAKING MEASUREMENTS ON REDUCED PLANS, THE ABOVE SCALES MAY BE USED.

J.U.L.I.E.  
JOINT UTILITY LOCATION INFORMATION FOR EXCAVATION  
1-800-892-0123  
OR 811

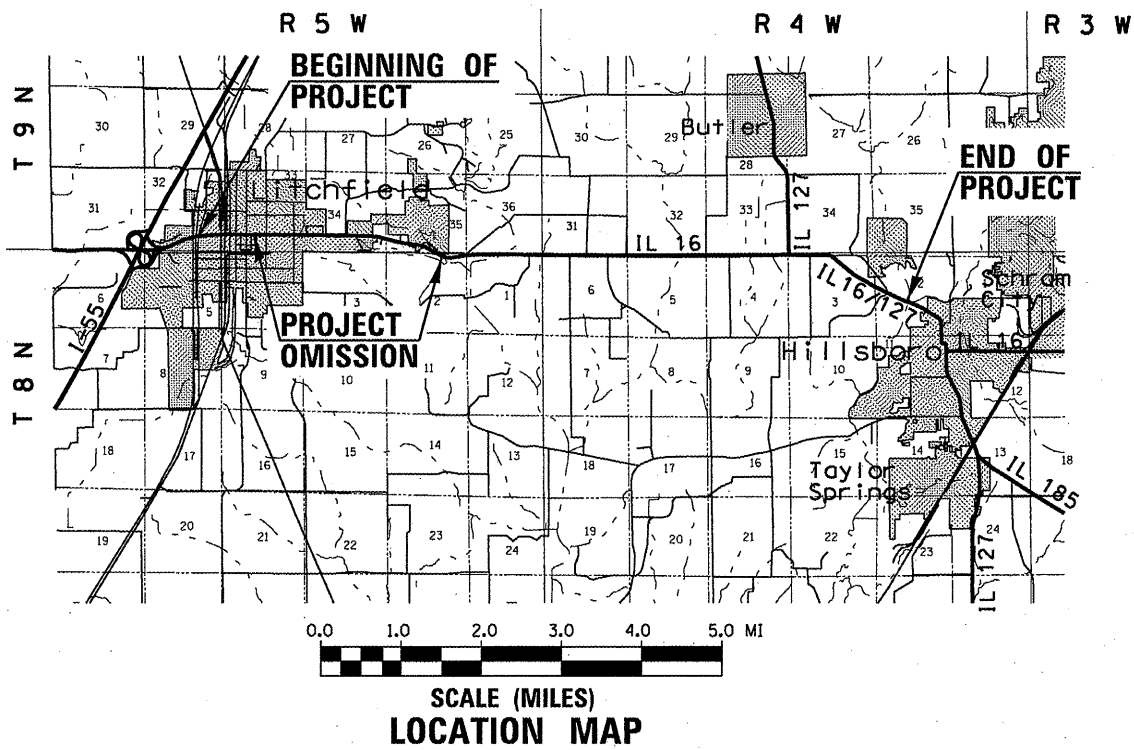
PROJECT ENGINEER: JEFF MYERS (217) 782-4761  
TEAM MANAGER: TIM SLAGLE (217) 785-5338

**CONTRACT NO. 72D67**

# STATE OF ILLINOIS DEPARTMENT OF TRANSPORTATION DIVISION OF HIGHWAYS

# PROPOSED HIGHWAY PLANS

IL ROUTE 16 (FAP 325) & IL 127 (FAP 42)  
SECTION (15, 21)RS-7, 22RS-4, 24RS-8  
PROJECT ACF-000S (868)  
PPP BITUMINOUS RESURFACING FOR IL 16 & IL 127  
MONTGOMERY COUNTY  
C-96-001-10



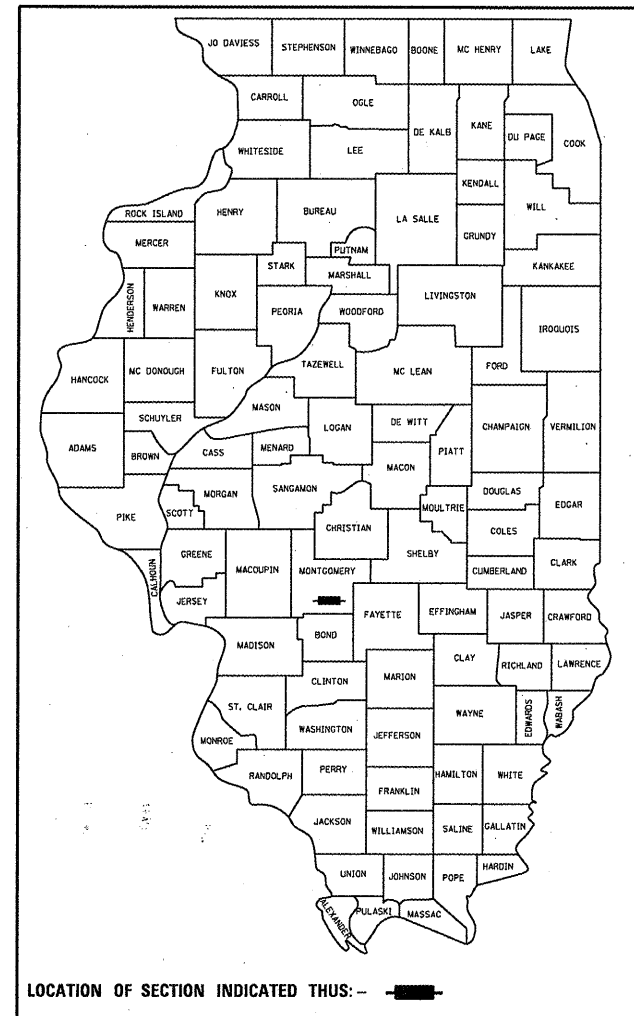
**PROJECT STATIONING:**  
 BEGINNING OF PROJECT (LITCHFIELD) - 923+67.05  
 STATION EQUATION - 942+12.70 BK. = 0+00.00 AHD.  
 END OF URBAN SECTION (LITCHFIELD) - 19+97.28  
 BEGINNING OF RURAL SECTION (EAST OF LITCHFIELD) - 100+64.00  
 STATION EQUATION - 131+27.83 BK. = 131+19.80 AHD.  
 BRIDGE OMISSION (WEST FORK, SHOAL CREEK) - 158+40.49 TO 160+67.70  
 BRIDGE OMISSION (BRUSH CREEK) - 277+49.25 TO 279+82.33  
 STATION EQUATION - 428+69.55 BK. = 433+70.11 AHD.  
 END OF PROJECT (MIDDLE FORK, SHOAL CREEK) - 441+25.00

GROSS LENGTH = 36,951.11 FT. = 6.998 MILES  
 NET LENGTH = 36,490.82 FT. = 6.911 MILES

| F.A.P. RTE. | SECTION              | COUNTY     | TOTAL SHEETS       | SHEET NO. |
|-------------|----------------------|------------|--------------------|-----------|
| 15, 21      | RS-7, 22RS-4, 24RS-8 | MONTGOMERY | 80                 | 1         |
|             |                      | ILLINOIS   | CONTRACT NO. 72D67 |           |

• - (15, 21)RS-7, 22RS-4, 24RS-8  
 •• - 42, 325

D-96-001-10



STATE OF ILLINOIS  
 DEPARTMENT OF TRANSPORTATION  
 DIVISION OF HIGHWAYS

SUBMITTED August 24, 2011  
 [Signature]  
 DEPUTY DIRECTOR OF HIGHWAYS, REGION ENGINEER

Oct 14, 2011  
 Scott E. Stitt, P.E.  
 acting ENGINEER OF DESIGN AND ENVIRONMENT

Oct 14, 2011  
 Christine M. Reed  
 DIRECTOR OF HIGHWAYS, CHIEF ENGINEER

**PRINTED BY THE AUTHORITY  
 OF THE STATE OF ILLINOIS**