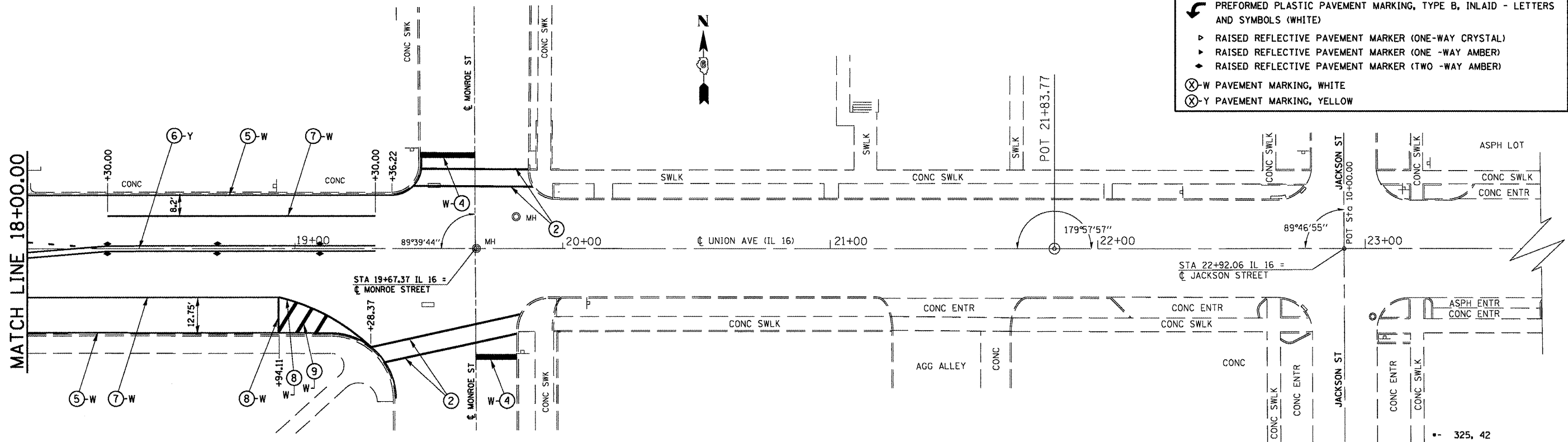


PAVEMENT MARKING LEGEND

- ① PREFORMED PLASTIC PAVEMENT MARKING, TYPE B, INLAID - LINE 5"
- ② PREFORMED PLASTIC PAVEMENT MARKING, TYPE B, INLAID - LINE 6"
- ③ PREFORMED PLASTIC PAVEMENT MARKING, TYPE B, INLAID - LINE 6" (6' SKIP- 2' DASH)
- ④ PREFORMED PLASTIC PAVEMENT MARKING, TYPE B, INLAID - LINE 24"
- ⑤ THERMOPLASTIC PAVEMENT MARKING - LINE 5"
- ⑥ THERMOPLASTIC PAVEMENT MARKING - LINE 5" (DOUBLE YELLOW LINES @ 13" CENTERS)
- ⑦ THERMOPLASTIC PAVEMENT MARKING - LINE 6"
- ⑧ THERMOPLASTIC PAVEMENT MARKING - LINE 8"
- ⑨ THERMOPLASTIC PAVEMENT MARKING - LINE 12"
- ⑩ PAINT PAVEMENT MARKING - LINE 5"
- ↶ PREFORMED PLASTIC PAVEMENT MARKING, TYPE B, INLAID - LETTERS AND SYMBOLS (WHITE)
- ▶ RAISED REFLECTIVE PAVEMENT MARKER (ONE-WAY CRYSTAL)
- ▶ RAISED REFLECTIVE PAVEMENT MARKER (ONE -WAY AMBER)
- ◆ RAISED REFLECTIVE PAVEMENT MARKER (TWO -WAY AMBER)
- ⊗-W PAVEMENT MARKING, WHITE
- ⊗-Y PAVEMENT MARKING, YELLOW



FILE NAME =	USER NAME = sparkagw	DESIGNED - RTS	REVISED -	STATE OF ILLINOIS DEPARTMENT OF TRANSPORTATION	PAVEMENT MARKING LAYOUT (LITCHFIELD)	F.A.P. RTE.	SECTION	COUNTY	TOTAL SHEETS	SHEET NO.
o:\pwork\puidot\sparkagw\d\2222005\067	2067-ah-t-pmk.dgn	DRAWN - RTS	REVISED -		SCALE: 1" = 40.0000' / 1"	SHEET NO. 5 OF 5 SHEETS	325, 42	MONTGOMERY	80	60
	PLT SCALE = 40.0000' / 1"	CHECKED - RTS	REVISED -		STA. _____ TO STA. _____	FED. ROAD DIST. NO. _____	ILLINOIS FED. AID PROJECT			
	PLT DATE = Aug-25-2011 18:16:14AM	DATE - 06-16-11	REVISED -							