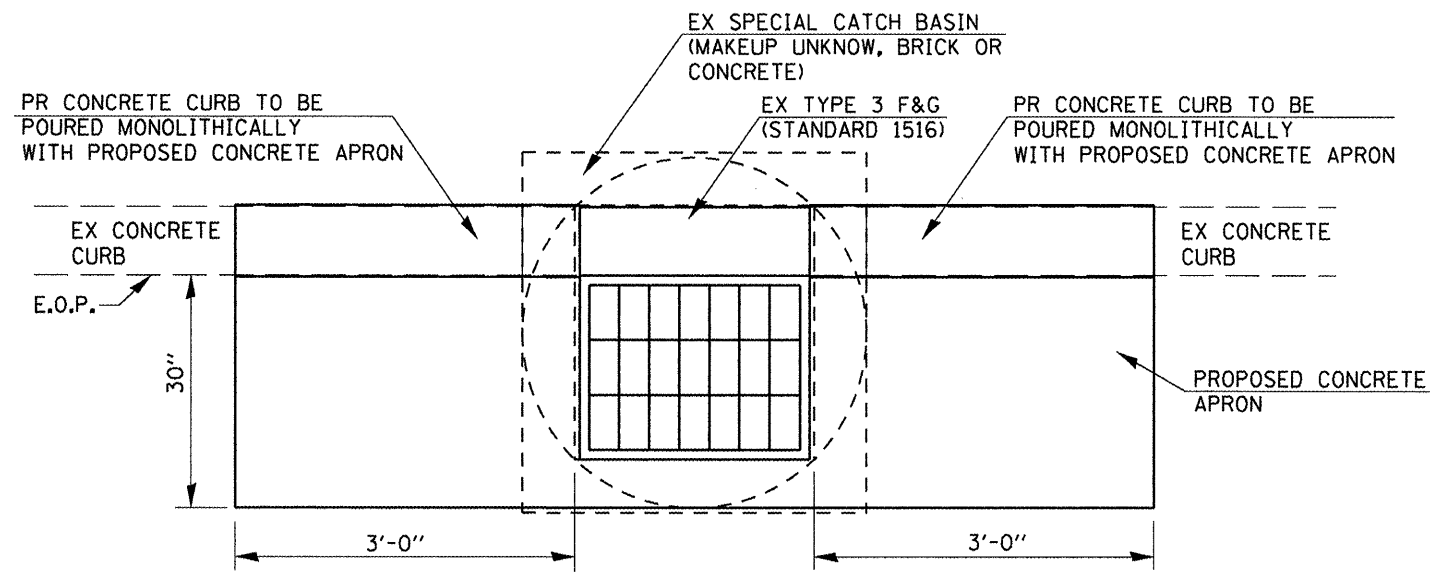
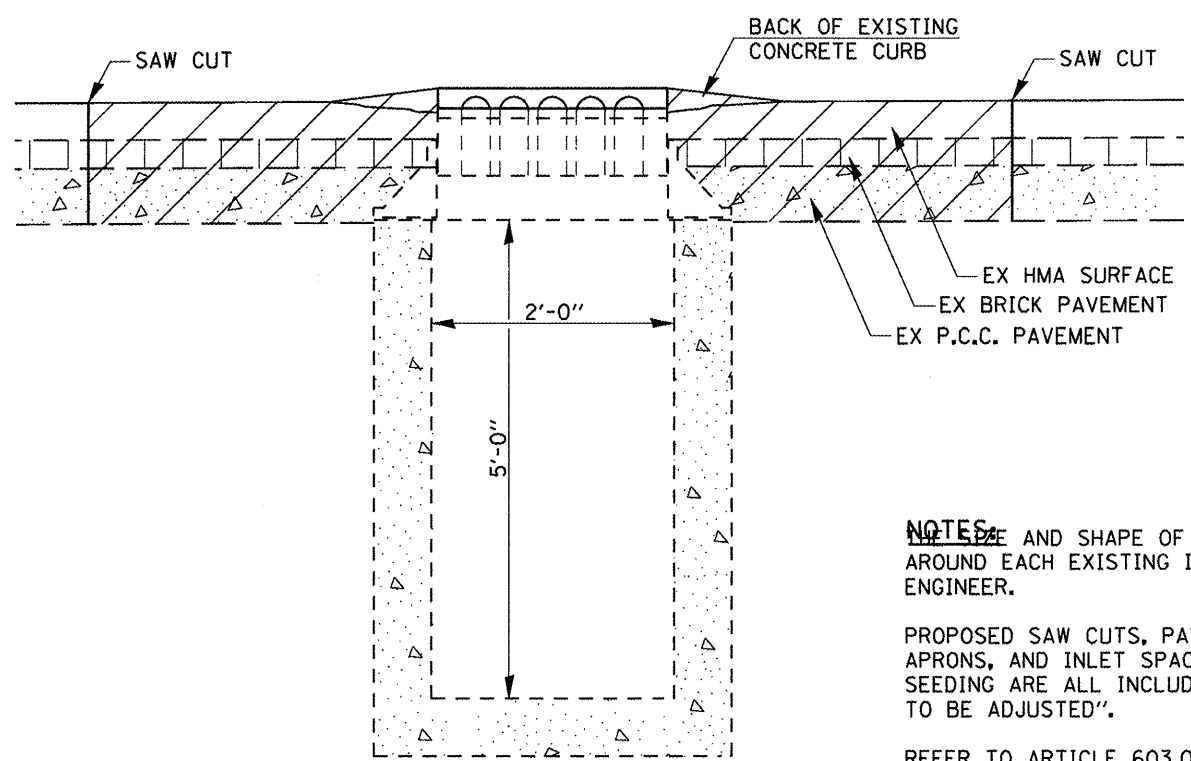


EXISTING PLAN VIEW

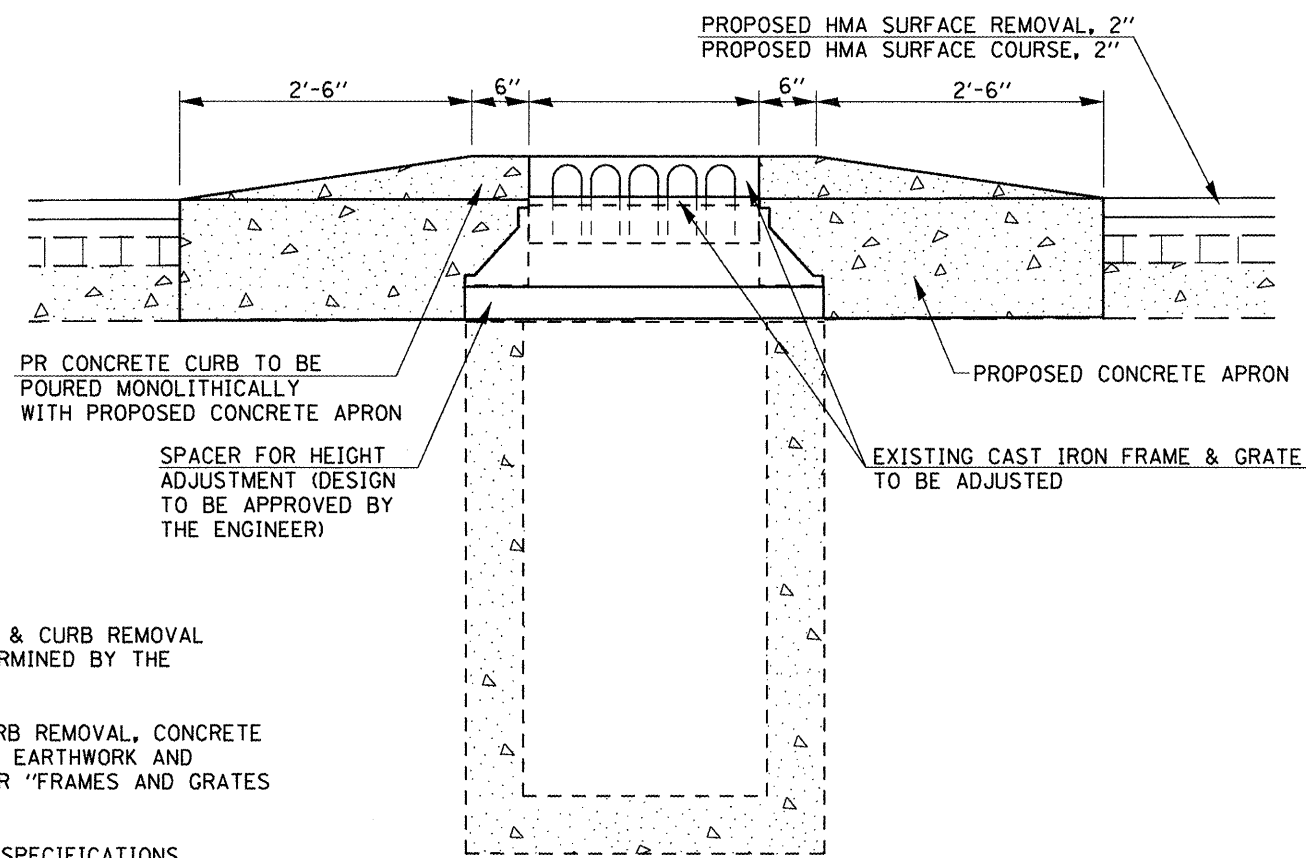


PROPOSED PLAN VIEW

-EX PAVEMENT & CURB TO BE REMOVED



EXISTING ELEVATION VIEW



PROPOSED ELEVATION VIEW

NOTES:
 1. LOCATION AND SHAPE OF PROPOSED PAVEMENT & CURB REMOVAL AROUND EACH EXISTING INLET SHALL BE DETERMINED BY THE ENGINEER.

2. PROPOSED SAW CUTS, PAVEMENT REMOVAL, CURB REMOVAL, CONCRETE APRONS, AND INLET SPACERS ALONG WITH ANY EARTHWORK AND SEEDING ARE ALL INCLUDED IN THE COSTS FOR "FRAMES AND GRATES TO BE ADJUSTED".

3. REFER TO ARTICLE 603.03 OF THE STANDARD SPECIFICATIONS FOR ROAD & BRIDGE CONSTRUCTION FOR FURTHER CONSTRUCTION REQUIREMENTS.

FRAMES & GRATES TO BE ADJUSTED	
LOCATION	QUANTITY
STA. 1+50, 17' RT.	1 EACH
STA. 7+30, 17' LT.	1 EACH
TOTAL:	2 EACH

-- 325, 42
 -- (15, 21)RS-7, 22RS-4, 24RS-8

FILE NAME =	USER NAME = sparkgw	DESIGNED - RTS	REVISED -	STATE OF ILLINOIS DEPARTMENT OF TRANSPORTATION	FRAME & GRATE ADJUSTMENTS			F.A.P. RTE.	SECTION	COUNTY	TOTAL SHEETS	SHEET NO.	
o:\p\work\p\idot\sparkgw\0222005\0672067-ahd-details.dgn		DRAWN - RTS	REVISED -		SCALE:	SHEET NO. 2 OF 2 SHEETS	STA.	TO STA.	•	••	MONTGOMERY	80	73
		CHECKED -	REVISED -										
		DATE - 07-19-11	REVISED -						FED. ROAD DIST. NO.	ILLINOIS FED. AID PROJECT			