

F.A.P. RTE.	SECTION	COUNTY	TOTAL SHEETS	SHEET NO.
310	(69-1)L-1	MORGAN	17	1
		ILLINOIS	CONTRACT NO. 72E13	

D-96-034-11

STATE OF ILLINOIS  
DEPARTMENT OF TRANSPORTATION  
DIVISION OF HIGHWAYS

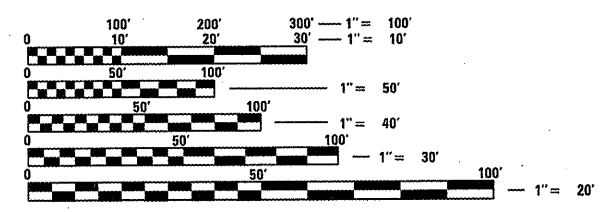
**PROPOSED  
HIGHWAY PLANS**

FAP ROUTE 310 (US 67)  
SECTION (69-1)L-1  
PROJECT HSIP-0310(146)  
LIGHTING, SIGNING, AND GUARDRAIL  
MORGAN COUNTY

**INDEX OF SHEETS**

1	COVERSHEET
2	GENERAL NOTES
3-5	SUMMARY OF QUANTITIES
6	LIGHTING PLANS
7	SIGNING PLANS
8-9	GUARDRAIL PLANS
10-12	WIRING DETAILS
13	FINAL LIGHTING INSPECTION DETAILS
14-17	ARCHIVED LIGHTING PLANS

FOR LIST OF STANDARDS, SEE SHEET NO. 2



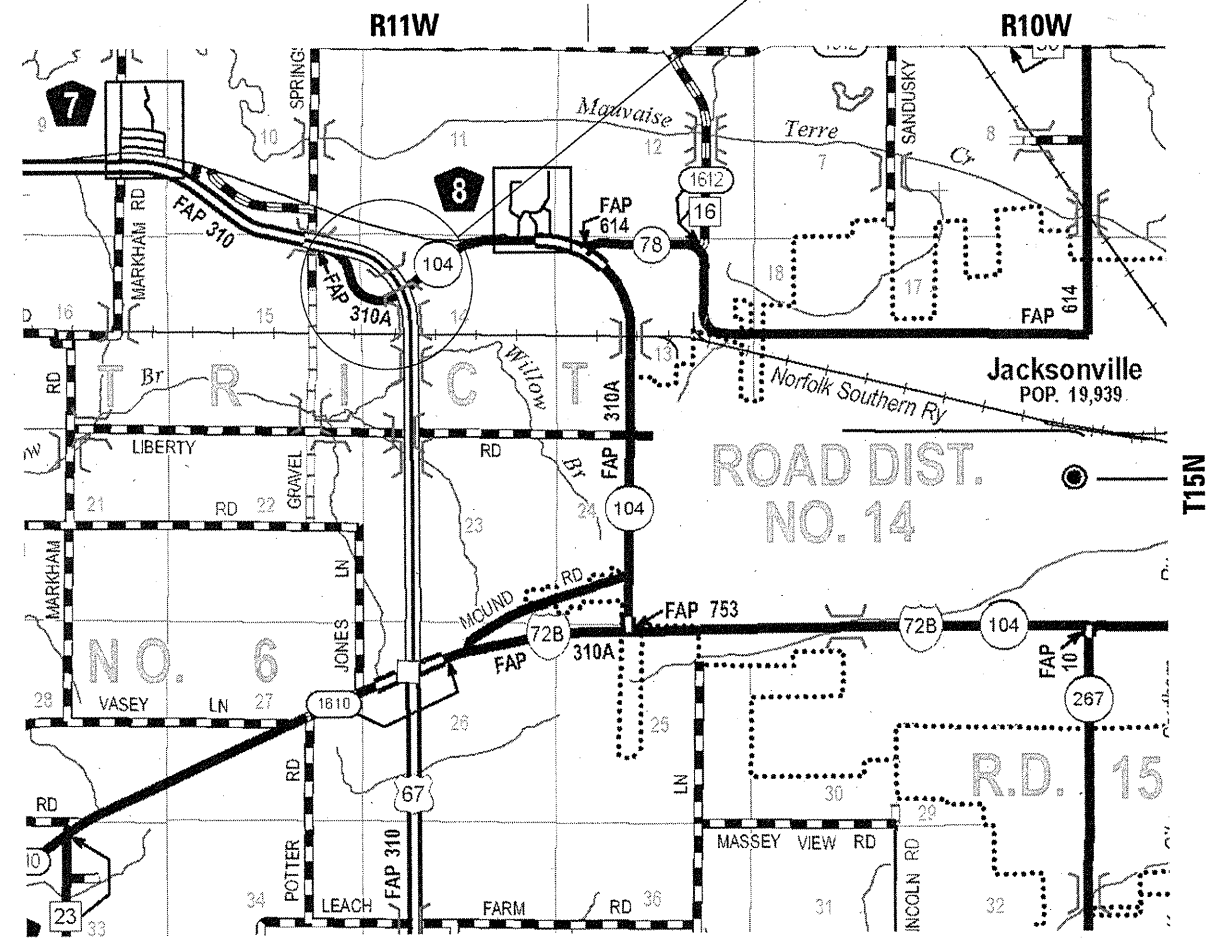
FULL SIZE PLANS HAVE BEEN PREPARED USING STANDARD ENGINEERING SCALES. REDUCED SIZED PLANS WILL NOT CONFORM TO STANDARD SCALES. IN MAKING MEASUREMENTS ON REDUCED PLANS, THE ABOVE SCALES MAY BE USED.

J.U.L.I.E.  
JOINT UTILITY LOCATION INFORMATION FOR EXCAVATION  
1-800-892-0123  
OR 811

SENIOR TEAM ENGINEER VINCE MADONIA 217-785-9046  
TEAM ENGINEER JAY EDWARDS 217-785-5321

CONTRACT NO. 72E13

C-96-034-11 STA. 0+000 to 1+390 (RAMP A)  
STA. 0+549 (RAMP B) to 0+940 (RAMP D)



GROSS LENGTH = 4893 FT. = 0.927 MILE



LOCATION OF SECTION INDICATED THUS: —

STATE OF ILLINOIS  
DEPARTMENT OF TRANSPORTATION  
DIVISION OF HIGHWAYS

SUBMITTED Oct 20 20 11  
Res 2 Dairy  
DEPUTY DIRECTOR OF HIGHWAYS, REGION ENGINEER

December 9 20 11  
Scott E. Stitt P.E.  
acting ENGINEER OF DESIGN AND ENVIRONMENT

December 9 20 11  
William R. Fraley  
Intern DIRECTOR OF HIGHWAYS, CHIEF ENGINEER

PRINTED BY THE AUTHORITY  
OF THE STATE OF ILLINOIS