

INDEX OF SHEETS 1-20-2012 LETTING ITEM 045 STATE OF ILLINOIS

DEPARTMENT OF TRANSPORTATION
DIVISION OF HIGHWAYS

**PROPOSED
HIGHWAY PLANS**

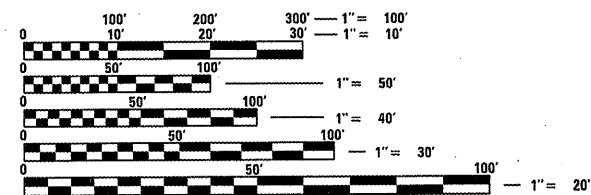
FAP ROUTE 310 (US 67)
SECTION (69-1)L-1
PROJECT HSIP-0310(146)
LIGHTING, SIGNING, AND GUARDRAIL
MORGAN COUNTY

F.A.P. RTE.	SECTION	COUNTY	TOTAL SHEETS	SHEET NO.
310	(69-1)L-1	MORGAN	17	1
		ILLINOIS	CONTRACT NO. 72E13	

D-96-034-11

- 1 COVERSHEET
- 2 GENERAL NOTES
- 3-5 SUMMARY OF QUANTITIES
- 6 LIGHTING PLANS
- 7 SIGNING PLANS
- 8-9 GUARDRAIL PLANS
- 10-12 WIRING DETAILS
- 13 FINAL LIGHTING INSPECTION DETAILS
- 14-17 ARCHIVED LIGHTING PLANS

FOR LIST OF STANDARDS, SEE SHEET NO. 2

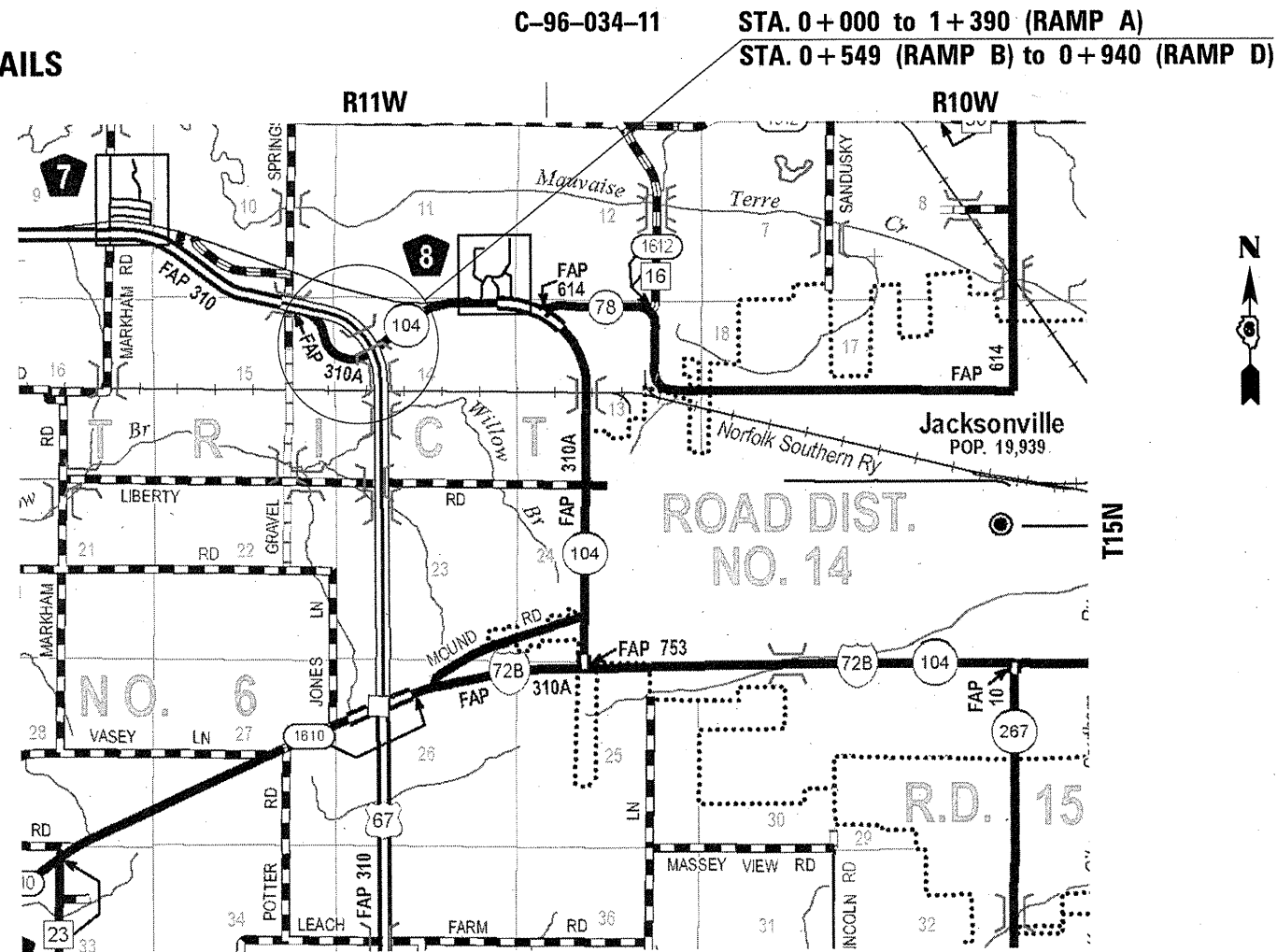


FULL SIZE PLANS HAVE BEEN PREPARED USING STANDARD ENGINEERING SCALES. REDUCED SIZED PLANS WILL NOT CONFORM TO STANDARD SCALES. IN MAKING MEASUREMENTS ON REDUCED PLANS, THE ABOVE SCALES MAY BE USED.

J.U.L.I.E.
JOINT UTILITY LOCATION INFORMATION FOR EXCAVATION
1-800-892-0123
OR 811

SENIOR TEAM ENGINEER VINCE MADONIA 217-785-9046
TEAM ENGINEER JAY EDWARDS 217-785-5321

CONTRACT NO. 72E13



GROSS LENGTH = 4893 FT. = 0.927 MILE



LOCATION OF SECTION INDICATED THUS: —

STATE OF ILLINOIS
DEPARTMENT OF TRANSPORTATION
DIVISION OF HIGHWAYS

SUBMITTED Oct 20 20 11
Res 2 Dairy
DEPUTY DIRECTOR OF HIGHWAYS, REGION ENGINEER

December 9 20 11
Scott E. Stitt P.E.
Acting ENGINEER OF DESIGN AND ENVIRONMENT

December 9 20 11
William R. Fraley
Intern DIRECTOR OF HIGHWAYS, CHIEF ENGINEER

**PRINTED BY THE AUTHORITY
OF THE STATE OF ILLINOIS**

HIGHWAY STANDARDS

630001-10
 630301-05
 631011-08
 635011-02
 701001-02
 701006-03
 701011-02
 701101-02
 701106-02
 701456-02
 701901-02
 720006-03
 728001-01
825026-02
 836001-01
830021

DISTRICT SIX	
EXAMINED <u>October 5</u>	20 <u>11</u>
<i>Chris Walker</i>	
OPERATIONS ENGINEER	

EXAMINED <u>9-29</u>	20 <u>11</u>
<i>Tom Z...</i>	
PROJECT IMPLEMENTATION ENGINEER	

EXAMINED <u>September 27</u>	20 <u>11</u>
<i>ARMU</i>	
PROGRAM DEVELOPMENT ENGINEER	

GENERAL LIGHTING NOTES

1. ALL PROPOSED LIGHTING UNITS SHALL BE LABELED ACCORDING TO THE STANDARD SPECIFICATIONS, WITH POLE NUMBERS ATTACHED WITH STAINLESS STEEL BANDING. LIGHTING UNIT NUMBERING SHALL BE AS DIRECTED BY THE ENGINEER.
2. THE CONTRACTOR IS RESPONSIBLE FOR UNCOVERING OR HAND DIGGING AROUND UTILITIES AS NECESSARY. THE COST OF THIS WORK IS TO BE INCLUDED WITH THE **UNIT DUCT PAY ITEM**.
3. PROPOSED LIGHT POLES SHALL BE INSTALLED AT AN OFFSET OF 23 FEET WITH RESPECT TO THE ADJACENT RAMP ALIGNMENT. NO POLES TO BE INSTALLED IN THE FLOWLINE OF DITCH. POLE SETBACK TO BE INCREASED IF NECESSARY AS DIRECTED BY THE ENGINEER.
4. THE CONTRACTOR SHALL BE RESPONSIBLE FOR MAINTAINING THE LIGHTING SYSTEM FED FROM THE PROPOSED CONTROLLER, INCLUDING EXISTING LIGHTING UNITS 24, 25, 26 AND 27, UNTIL IDOT HAS TAKEN ACCEPTANCE OF THE SYSTEM. ALL CIRCUITS AND CABLES TO THE LIGHT POLES SHALL BE MAINTAINED AS NEEDED AND THIS WORK SHALL BE INCIDENTAL TO THE CONTRACT.
5. THE CONTRACTOR SHALL TILT THE PROPOSED MULTI-MOUNT LUMINAIRES DOWN 20 DEGREES BELOW THE STANDARD TILT OF 45 DEGREES. THE LUMINAIRES SHALL BE PERMANENTLY SECURED IN THIS POSITION ACCORDING TO MANUFACTURER INSTRUCTIONS. THE COST OF THIS WORK SHALL BE INCIDENTAL TO THE APPLICABLE LUMINAIRE PAY ITEM.
6. THE CONTRACTOR SHALL DISCONNECT A PORTION OF THE EXISTING LIGHTING CIRCUIT AT POLE 20 AND RECONNECT TO THE NEW CONTROLLER AS SHOWN ON THE PLANS. THE COST OF THIS WORK SHALL BE INCLUDED IN THE COST OF THE UNIT DUCT PAY ITEM.
7. THE CONTRACTOR SHALL TAKE INSULATION RESISTANCE MEASUREMENTS OF ALL EXISTING CIRCUITS BEFORE ANY MODIFICATIONS ARE MADE AND PROVIDE THE WRITTEN RESULTS TO THE ENGINEER. EXISTING CIRCUITS IN THE LIGHTING CONTROLLER AT STA. 0+268 ON RAMP B NOT TESTED AND PROPERLY DOCUMENTED SHALL BE SUBJECT TO THE INSULATION REQUIREMENTS OF ARTICLE 801.13 AT THE CONTRACTOR'S EXPENSE.
8. THE CONTRACTOR SHALL TAKE INSULATION RESISTANCE MEASUREMENTS OF THE EXISTING PORTION OF THE CIRCUIT FED FROM THE PROPOSED CONTROLLER AT STA. 28+050 PRIOR TO CONNECTING THE NEW FACILITIES TO THIS CIRCUIT. WRITTEN RESULTS SHALL BE PROVIDED TO THE ENGINEER.
9. AFTER THE PROPOSED CIRCUIT IS FULLY INSTALLED THE CONTRACTOR SHALL TAKE INSULATION RESISTANCE MEASUREMENTS ACCORDING TO ARTICLE 801.13 AND PROVIDE THE WRITTEN RESULTS TO THE ENGINEER. IF THE TEST RESULTS DO NOT COMPLY WITH ARTICLE 801.13, THE CONTRACTOR SHALL THEN TEST ONLY THE PORTIONS OF THE CIRCUIT WHICH ARE NEW. ANY WORK NECESSARY TO BRING THE CIRCUIT INTO COMPLIANCE SHALL BE AT THE CONTRACTOR'S OWN EXPENSE AND NO ADDITIONAL PAYMENT WILL BE ALLOWED.
10. THE CONTRACTOR SHALL PLACE A COPY OF REVISED AS-BUILT PLANS INSIDE THE EXISTING LIGHTING CONTROLLER AT STA. 0+268 ON RAMP B.

GENERAL NOTES

1. ALL STATIONING IS CALLED OUT IN METRIC TO AID IN FIELD LOCATING. ALL OTHER DIMENSIONS AND PAY ITEMS ARE IN ENGLISH.
2. ALL TRAFFIC CONTROL SIGNS SHALL BE LIKE NEW OR IN GOOD CONDITION.

COMMITMENTS

THE FIELD/RESIDENT ENGINEER SHALL CONTACT STUDIES & PLANS CONCERNING ANY MAJOR PLANS CHANGES TO MAKE SURE NO PREVIOUS COMMITMENTS (NOT LISTED) WERE MADE AFFECTING THE DESIGN AND ALLOW AN IMPROVED DESIGN FOR FUTURE PROJECTS.

FILE NAME #	USER NAME #	DESIGNED -	REVISED -	STATE OF ILLINOIS DEPARTMENT OF TRANSPORTATION	GENERAL NOTES	F.A.P. RTE.	SECTION	COUNTY	TOTAL SHEETS	SHEET NO.	
		DRAWN -	REVISED -			310	(69-1)L-1	MORGAN	16	2	
		CHECKED -	REVISED -			CONTRACT NO. 72E13					
		DATE -	REVISED -			ILLINOIS FED. AID PROJECT					
		PLOT SCALE = 1/8" = 1' / in.			SCALE:	SHEET NO.	OF	SHEETS	STA.	TO STA.	
		PLOT DATE = Oct-17-2011 08:44:18AM									

CODE NO.	ITEM	UNIT	TOTAL QUANTITY	CONSTR. CODE
				90% FED, 10% STATE HIGHWAY LIGHTING
				0021 URBAN
20400800	FURNISHED EXCAVATION	CU YD	40.0	40.0
63000001	STEEL PLATE BEAM GUARDRAIL, TYPE A, 6 FOOT POSTS	FOOT	1000.0	1000.0
63100045	TRAFFIC BARRIER TERMINAL, TYPE 2	EACH	4.0	4.0
63100167	TRAFFIC BARRIER TERMINAL, TYPE 1 (SPECIAL) TANGENT	EACH	4.0	4.0
67100100	MOBILIZATION	L SUM	1.0	1.0
70100825	TRAFFIC CONTROL AND PROTECTION, STANDARD 701456	L SUM	1.0	1.0
72000100	SIGN PANEL - TYPE 1	SQ FT	42.0	42.0
72000200	SIGN PANEL - TYPE 2	SQ FT	40.0	40.0
72800100	TELESCOPING STEEL SIGN SUPPORT	FOOT	232.0	232.0
78200410	GUARDRAIL MARKERS, TYPE A	EACH	22.0	22.0
78201000	TERMINAL MARKER - DIRECT APPLIED	EACH	4.0	4.0
80400100	ELECTRIC SERVICE INSTALLATION	EACH	1.0	1.0
81028350	UNDERGROUND CONDUIT, PVC, 2" DIA.	FOOT	208.0	208.0
81603040	UNIT DUCT, 600V, 2-1C NO. 6, 1/C NO. 8 GROUND, (XLP-TYPE USE), 1" DIA. POLYETHYLENE	FOOT	3700.0	3700.0

FILE NAME =	USER NAME = sparksgu	DESIGNED -	REVISED -
c:\pr-work\puidot\sparksgu\0244700\067	BE13-sht-lightingplan.dgn	DRAWN -	REVISED -
	PLOT SCALE = 100.0000 / in.	CHECKED -	REVISED -
	PLOT DATE = Oct-20-2011 02:29:33PM	DATE -	REVISED -

**STATE OF ILLINOIS
DEPARTMENT OF TRANSPORTATION**

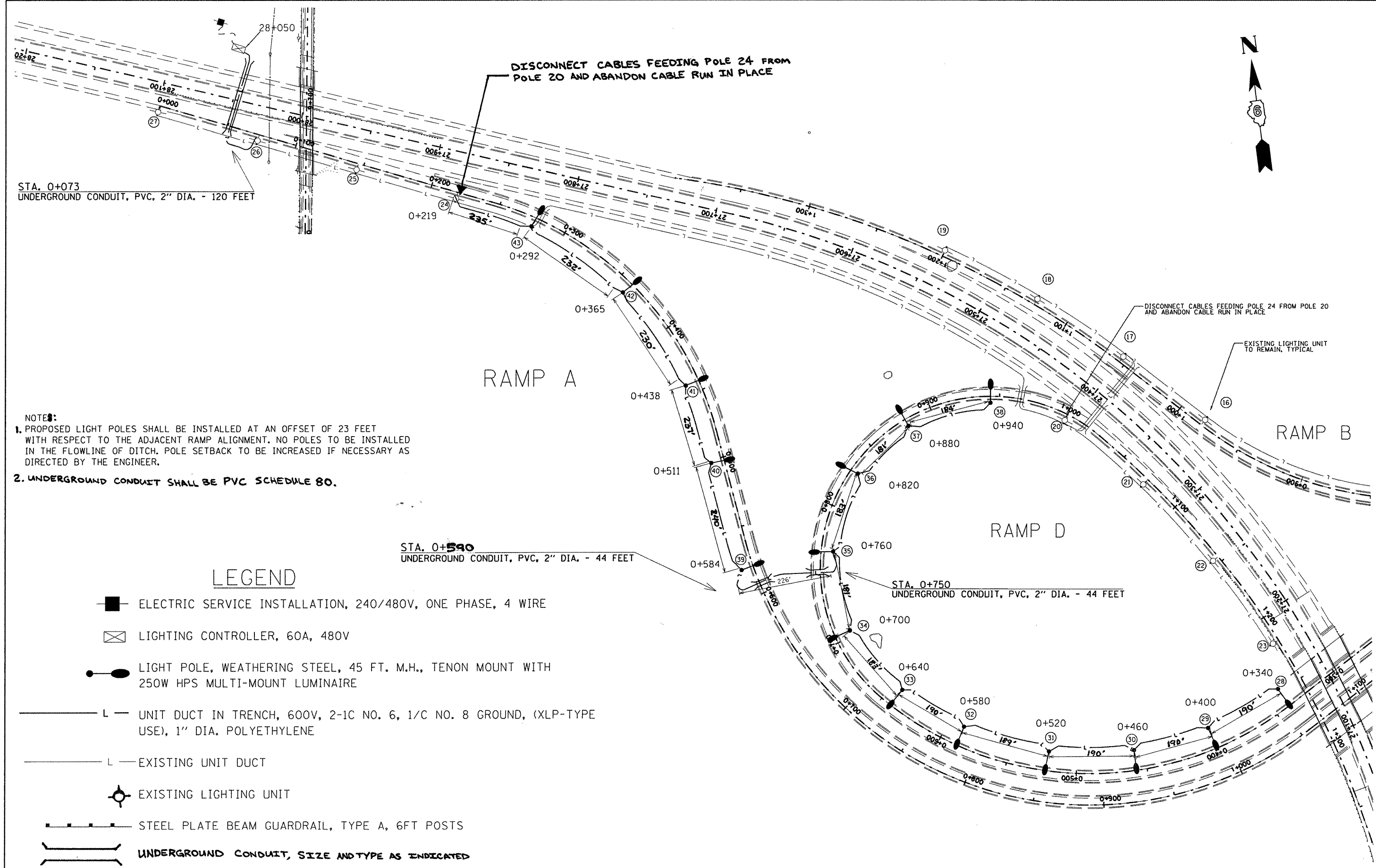
SUMMARY OF QUANTITIES

SCALE: SHEET OF SHEETS STA. TO STA.

F.A.P. RTE.	SECTION	COUNTY	TOTAL SHEETS	SHEET NO.
310	(69-1)L-1	MORGAN	17	3
CONTRACT NO. 72E13			ILLINOIS FED. AID PROJECT	

CODE NO.	ITEM	UNIT	TOTAL QUANTITY	CONSTR. CODE
				90% FED, 10% STATE
				HIGHWAY LIGHTING
				0021
				URBAN
82103900	LUMINAIRE, SODIUM VAPOR, MULTI-MOUNT, 250 WATT	EACH	16.0	16.0
82500360	LIGHTING CONTROLLER, BASE MOUNTED, 480VOLT, 100 AMP	EACH	1.0	1.0
83062730	LIGHT POLE, WEATHERING STEEL, 45 FT. M. H., TENON MOUNT	EACH	16.0	16.0
83600355	LIGHT POLE FOUNDATION, METAL, 15" BOLT CIRCLE, 8" X 6'	EACH	16.0	16.0
83800650	BREAKAWAY DEVICE, COUPLING WITH STAINLESS STEEL SCREEN	EACH	64.0	64.0

FILE NAME :	USER NAME : sparksgu	DESIGNED -	REVISED -	STATE OF ILLINOIS DEPARTMENT OF TRANSPORTATION	SUMMARY OF QUANTITIES	F.A.P. RTE.	SECTION	COUNTY	TOTAL SHEETS	SHEET NO.	
c:\pw\work\purdot\sparksgu\0244700\067	BE13-aht-lightingplan.dgn	DRAWN -	REVISED -			310	69-11L-1	MORGAN	17	4	
	PLOT SCALE : 100.0000 / in.	CHECKED -	REVISED -			CONTRACT NO. 72E13		ILLINOIS FED. AID PROJECT			
	PLOT DATE : Oct-20-2011 02:29:33PM	DATE -	REVISED -			SCALE:	SHEET OF SHEETS	STA. TO STA.			

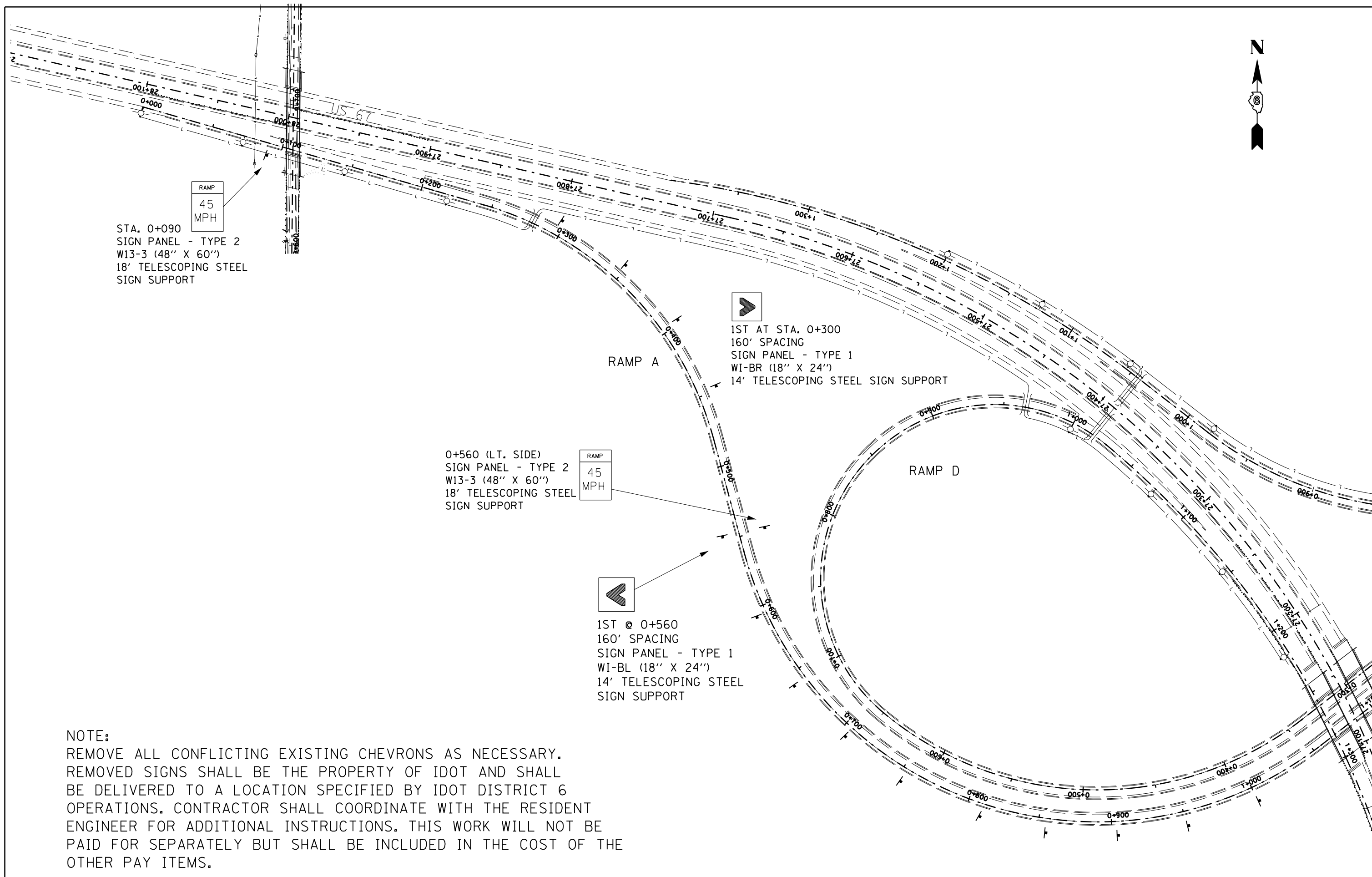


- NOTES:**
1. PROPOSED LIGHT POLES SHALL BE INSTALLED AT AN OFFSET OF 23 FEET WITH RESPECT TO THE ADJACENT RAMP ALIGNMENT. NO POLES TO BE INSTALLED IN THE FLOWLINE OF DITCH. POLE SETBACK TO BE INCREASED IF NECESSARY AS DIRECTED BY THE ENGINEER.
 2. UNDERGROUND CONDUIT SHALL BE PVC SCHEDULE 80.

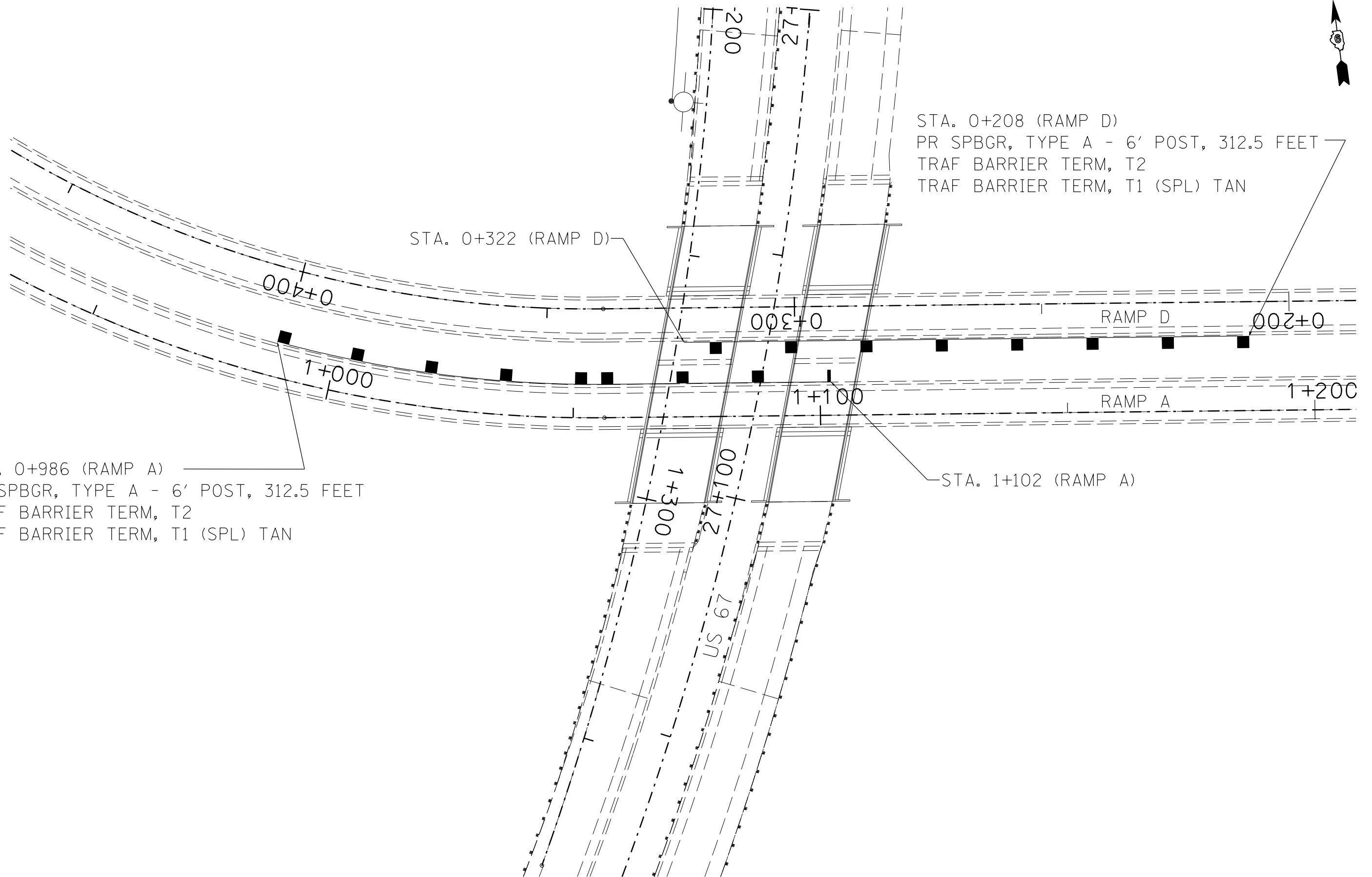
LEGEND

- ELECTRIC SERVICE INSTALLATION, 240/480V, ONE PHASE, 4 WIRE
- LIGHTING CONTROLLER, 60A, 480V
- LIGHT POLE, WEATHERING STEEL, 45 FT. M.H., TENON MOUNT WITH 250W HPS MULTI-MOUNT LUMINAIRE
- UNIT DUCT IN TRENCH, 600V, 2-1C NO. 6, 1/C NO. 8 GROUND, (XLP-TYPE USE), 1" DIA. POLYETHYLENE
- EXISTING UNIT DUCT
- EXISTING LIGHTING UNIT
- STEEL PLATE BEAM GUARDRAIL, TYPE A, 6FT POSTS
- UNDERGROUND CONDUIT, SIZE AND TYPE AS INDICATED

FILE NAME :	USER NAME :	DESIGNED -	REVISED -	STATE OF ILLINOIS DEPARTMENT OF TRANSPORTATION	LIGHTING PLANS			F.A.P. RTE.	SECTION	COUNTY	TOTAL SHEETS	SHEET NO.
	PLOT SCALE :	CHECKED -	REVISED -					310	169-11L-1	MORGAN	17	6
PLOT DATE :	DATE -	REVISED -	REVISED -	SCALE:	SHEET NO.	OF SHEETS	STA.	TO STA.	CONTRACT NO. 72E13 ILLINOIS FED. AID PROJECT			



FILE NAME =	USER NAME =	DESIGNED -	REVISED -	STATE OF ILLINOIS DEPARTMENT OF TRANSPORTATION	SIGNING PLANS				F.A.P. RTE.	SECTION	COUNTY	TOTAL SHEETS	SHEET NO.		
		DRAWN -	REVISED -		SCALE:	SHEET NO.	OF	SHEETS	STA.	TO STA.	310	(69-1)L-1	MORGAN	17	7
		CHECKED -	REVISED -						CONTRACT NO. 72E13						
		DATE -	REVISED -		ILLINOIS FED. AID PROJECT										



STA. 0+986 (RAMP A)
 PR SPBGR, TYPE A - 6' POST, 312.5 FEET
 TRAF BARRIER TERM, T2
 TRAF BARRIER TERM, T1 (SPL) TAN

STA. 0+208 (RAMP D)
 PR SPBGR, TYPE A - 6' POST, 312.5 FEET
 TRAF BARRIER TERM, T2
 TRAF BARRIER TERM, T1 (SPL) TAN

STA. 1+102 (RAMP A)

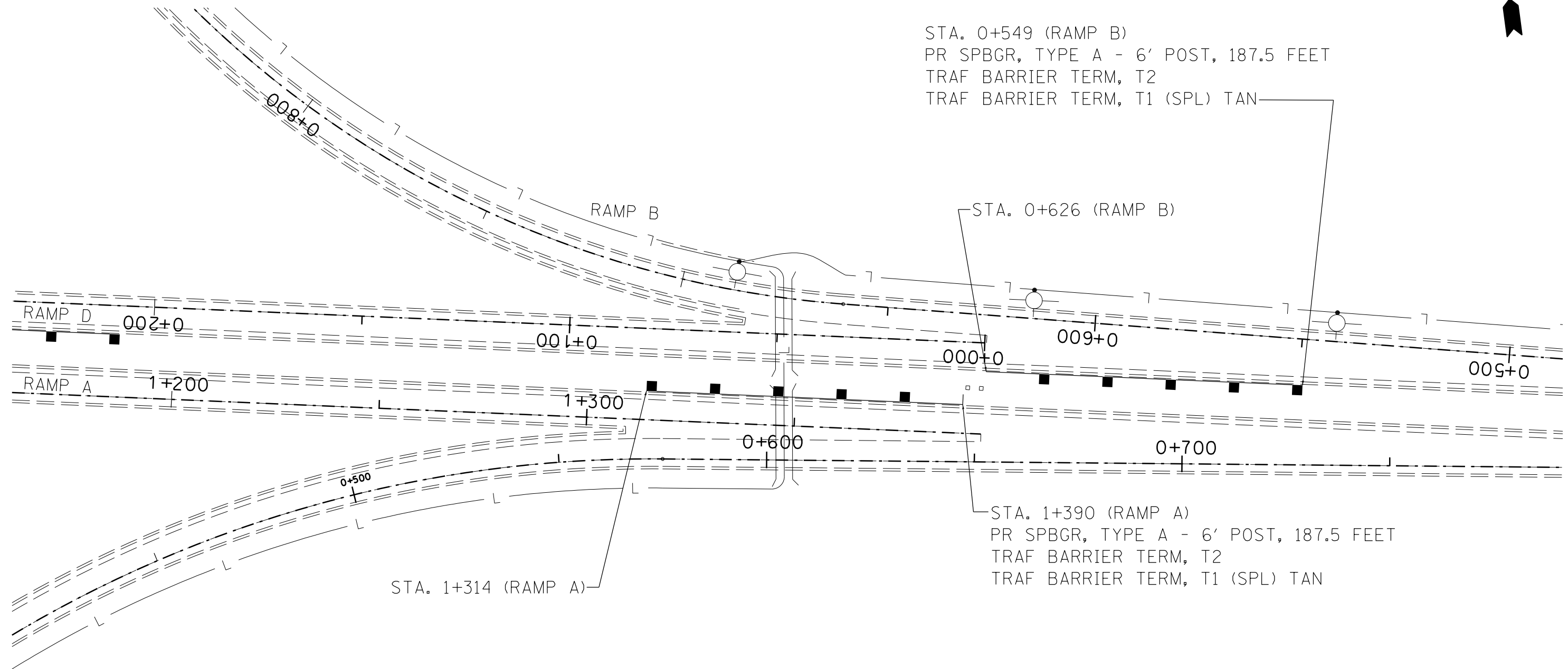
FILE NAME =	USER NAME = sparksgw	DESIGNED -	REVISED -
et:\pwork\pwork\sparksgw\0244700\0672E13-sht-lightngplan.dgn		DRAWN -	REVISED -
	PLOT SCALE = 186.4713' / in.	CHECKED -	REVISED -
	PLOT DATE = Oct-20-2011 02:29:53PM	DATE -	REVISED -

**STATE OF ILLINOIS
 DEPARTMENT OF TRANSPORTATION**

GUARDRAIL PLANS

SCALE: SHEET NO. OF SHEETS STA. TO STA.

F.A.P. RTE.	SECTION	COUNTY	TOTAL SHEETS	SHEET NO.
310	(69-1)L-1	MORGAN	17	8
CONTRACT NO. 72E13				
ILLINOIS FED. AID PROJECT				

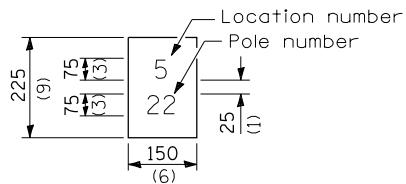


FILE NAME =	USER NAME = sparksgw	DESIGNED -	REVISED -
ct:\pw\work\p\idot\sparksgw\0244700\0672E13-sht-lightngplan.dgn		DRAWN -	REVISED -
	PLOT SCALE = 200.0000' / in.	CHECKED -	REVISED -
	PLOT DATE = Oct-20-2011 02:29:53PM	DATE -	REVISED -

**STATE OF ILLINOIS
 DEPARTMENT OF TRANSPORTATION**

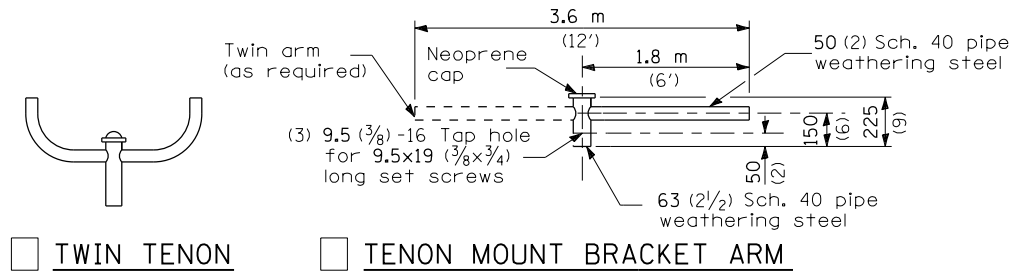
GUARDRAIL PLANS			
SCALE:	SHEET NO.	OF SHEETS	STA. TO STA.

F.A.P. RTE.	SECTION	COUNTY	TOTAL SHEETS	SHEET NO.
310	(69-1)L-1	MORGAN	17	9
CONTRACT NO. 72E13			ILLINOIS FED. AID PROJECT	



The contractor shall furnish and install a light pole identification of each new light pole, as shown above, incidental to the respective light pole pay item. The numerals shall be 75 (3) series "D", black, screened on silver-white type B pressure sensitive reflective sheeting conforming to the requirements of section T602.01 of the Standard Specifications for Traffic Control Items. The numerals shall conform to the FHWA "Standard Alphabets for Highway Signs".

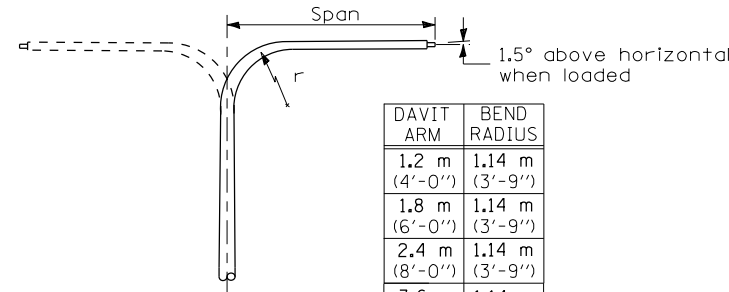
The light pole identification shall be applied to sign base material as specified in section 1069.06 of the Standard Specifications, approximately 180 (7) above the adjacent pavement grade visible to approaching traffic in accordance with Highway Standard 720001.



TWIN TENON

TENON MOUNT BRACKET ARM

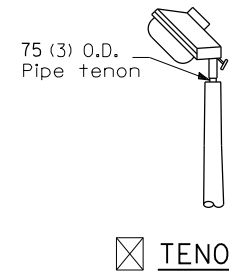
NOTE: Single or twin arm assembly shall be tilted 3° above horizontal.



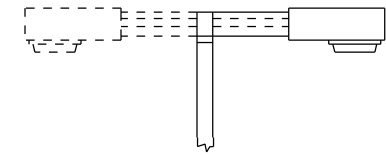
DAVIT ARM

DAVIT ARM-TWIN

DAVIT ARM	BEND RADIUS
1.2 m (4'-0")	1.14 m (3'-9")
1.8 m (6'-0")	1.14 m (3'-9")
2.4 m (8'-0")	1.14 m (3'-9")
3.6 m (12'-0")	1.14 m (3'-9")

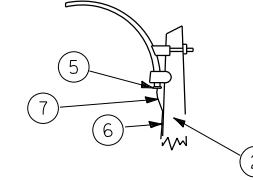


TENON

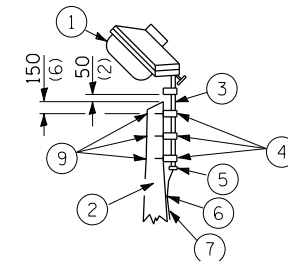


SHORT BRACKET

SHORT BRACKET - TWIN

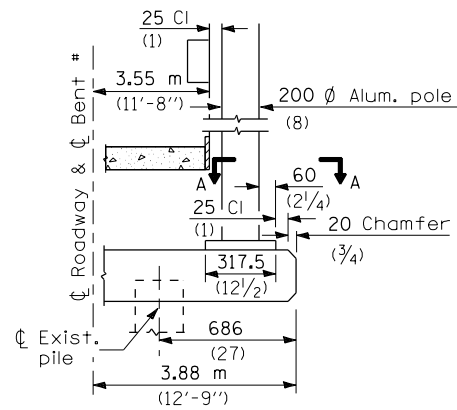


MAST ARM

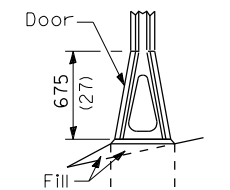


TENON

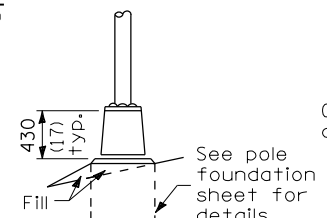
- ① Luminaire
- ② Wood pole, class 3 or better
- ③ 63 (2 1/2) Galv. steel conduit
- ④ Single offset pole band
- ⑤ Conduit bushing
- ⑥ Cable clamps on 600 (24) centers
- ⑦ 2/c #12 Type use cable
- ⑧ 25 (1) Galv. steel conduit 3.0 m (10') in length
- ⑨ 16 (5/8) Ø hot dipped galvanized bolt with flat washer & locknut (3 req'd)
- ⑩ Conduit clamps on 900 (36) centers
- ⑪ Unit duct
- ⑫ Threaded reducer
- ⑬ "C" Condulet, threaded
- ⑭ 40 (1 1/2) Galv. steel conduit for 1 unit duct or 75 (3) galv. steel conduit for 2 or 3 unit ducts.



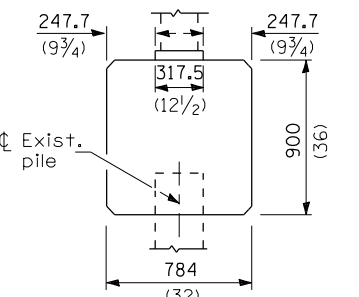
BENT # (Looking)



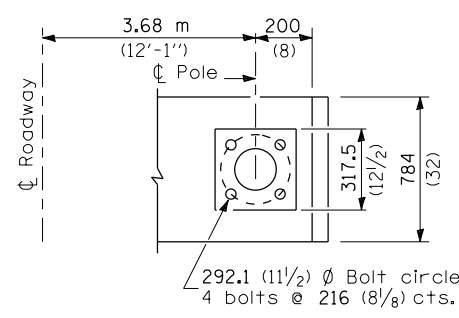
STAINLESS STEEL FLAIR BASE



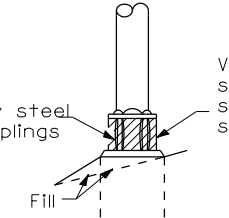
TRANSFORMER BASE



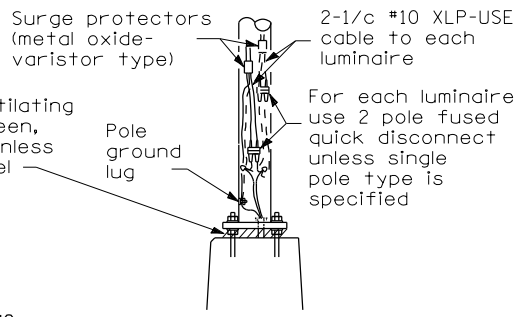
BRIDGE PIER MOUNT



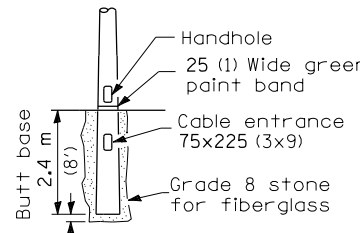
SECTION A-A



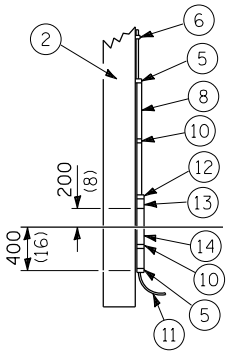
BREAKAWAY COUPLING



ANCHOR



BUTT BASE



POLE, WOOD

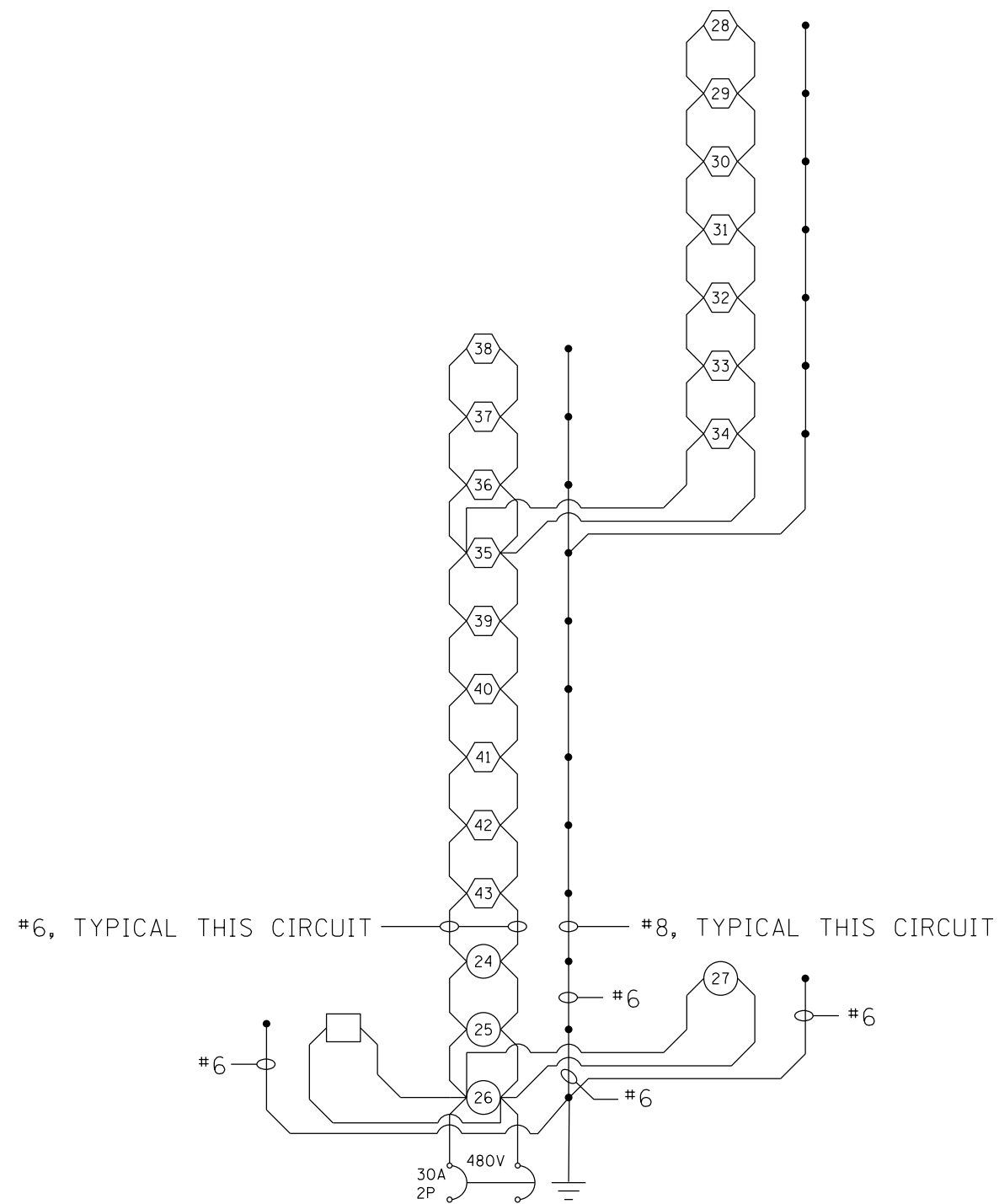
POLE LENGTH	DEPTH IN GROUND
19.8 m (65')	3.6 m (12')
18.0 m (60')	3.0 m (10')
16.8 m (55')	2.7 m (9')
16.0 m (50')	2.4 m (8')
13.7 m (45')	2.1 m (7')
12.0 m (40')	2.0 m (6.5')
10.7 m (35')	1.8 m (6')
9.0 m (30')	1.7 m (5.5')

All dimensions are in millimeters (inches) unless otherwise shown.

METAL OR CONCRETE

Details for underground distribution if required

FRANGIBLE



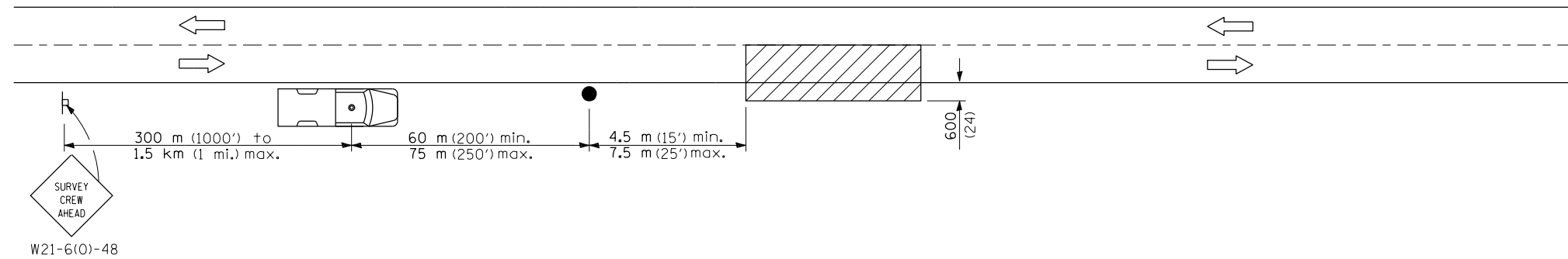
NOTES:

1. ALL NECESSARY REVISIONS TO THE WIRING SHOWN ON THIS SHEET SHALL BE MADE AT NO ADDITIONAL COST TO THE DEPARTMENT AND TO THE SATISFACTION OF THE ENGINEER.
2. POLE NUMBERS ASSIGNED TO THE EXISTING LIGHTING UNITS ARE BASED ON THE AS-BUILT LIGHTING PLANS.

- 250W HPS LUMINAIRE (EXISTING)
- ⬡ 250W HPS LUMINAIRE (PROPOSED)
- SIGN LIGHTING (EXISTING)

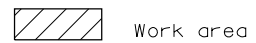
PROPOSED LIGHTING CIRCUIT
 PROPOSED LIGHTING CONTROLLER

FILE NAME =	USER NAME = sparksgw	DESIGNED -	REVISED -	STATE OF ILLINOIS DEPARTMENT OF TRANSPORTATION	WIRING DETAILS			F.A.P. RTE.	SECTION	COUNTY	TOTAL SHEETS	SHEET NO.
c:\pwork\pwork\sparksgw\0244700\0672E13-sht-lightingdetails.dgn	DRAWN -	REVISED -	310					(69-1)L-1	MORGAN	17	12	
PLOT SCALE = 0:30.000 m / in.	CHECKED -	REVISED -	CONTRACT NO. 72E13									
PLOT DATE = Oct-20-2011 02:30:01PM	DATE -	REVISED -	SCALE:		SHEET	OF	SHEETS	STA.	TO	STA.	ILLINOIS FED. AID PROJECT	

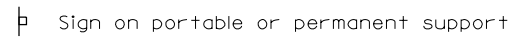


W21-6(0)-48

SYMBOLS



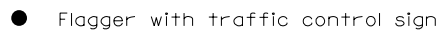
Work area



Sign on portable or permanent support



Truck with flashing amber light and dual emergency flashers



Flagger with traffic control sign

TYPICAL APPLICATIONS
Utility operations

All dimensions are in millimeters (inches) unless otherwise shown.

FILE NAME =	USER NAME = sparksgw	DESIGNED -	REVISED -
ct:\pwork\pwork\sparksgw\0244700\0672E13-sht-lightingdetails.dgn		DRAWN -	REVISED -
	PLOT SCALE = 0:30.000 mm / in.	CHECKED -	REVISED -
	PLOT DATE = Oct-20-2011 02:30:01PM	DATE -	REVISED -

STATE OF ILLINOIS
DEPARTMENT OF TRANSPORTATION

FINAL LIGHTING INSPECTION DETAILS

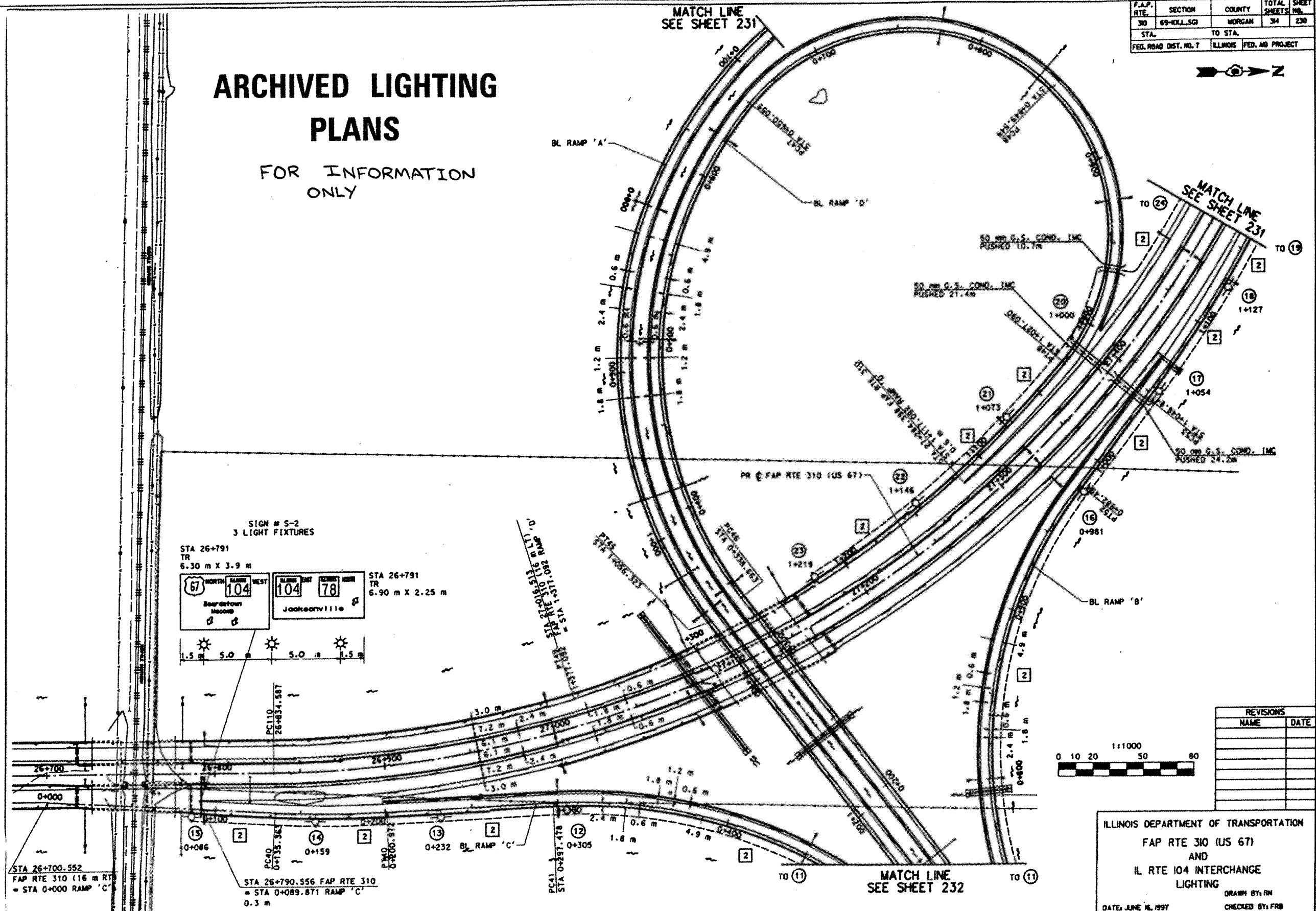
SCALE: SHEET OF SHEETS STA. TO STA.

F.A.P. RTE.	SECTION	COUNTY	TOTAL SHEETS	SHEET NO.
310	(69-1)L-1	MORGAN	17	13
ILLINOIS FED. AID PROJECT			CONTRACT NO. 72E13	

ARCHIVED LIGHTING PLANS

FOR INFORMATION ONLY

F.A.P. RTE.	SECTION	COUNTY	TOTAL SHEETS	SHEET NO.
310	69-IXL-1	MORGAN	34	230
STA.		TO STA.		
FED. ROAD DIST. NO. 7		ILLINOIS FED. AID PROJECT		



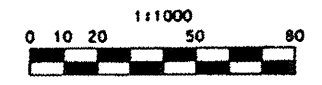
SIGN # S-2
3 LIGHT FIXTURES

STA 26+791
TR
6.30 m X 3.9 m

67 NORTH	104	104	78
Boardman	Moore	Jacksonville	

STA 26+791
TR
6.90 m X 2.25 m

1.5 m 5.0 m 5.0 m 1.5 m



REVISIONS	
NAME	DATE

ILLINOIS DEPARTMENT OF TRANSPORTATION
FAP RTE 310 (US 67)
AND
IL RTE 104 INTERCHANGE
LIGHTING
DRAWN BY: RM
CHECKED BY: FRB
DATE: JUNE 16, 1997

FILE NAME:	USER NAME: jomassa	DESIGNED: _____	REVISED: _____
al:\p\work\p\dot\j\omassa\08244789\067213-13-13-lighting\details.dgn		DRAWN: _____	REVISED: _____
PLOT SCALE: 8:38.937 m / in		CHECKED: _____	REVISED: _____
PLOT DATE: Sep-21-2011 01:36:37PM		DATE: _____	REVISED: _____

STATE OF ILLINOIS
DEPARTMENT OF TRANSPORTATION

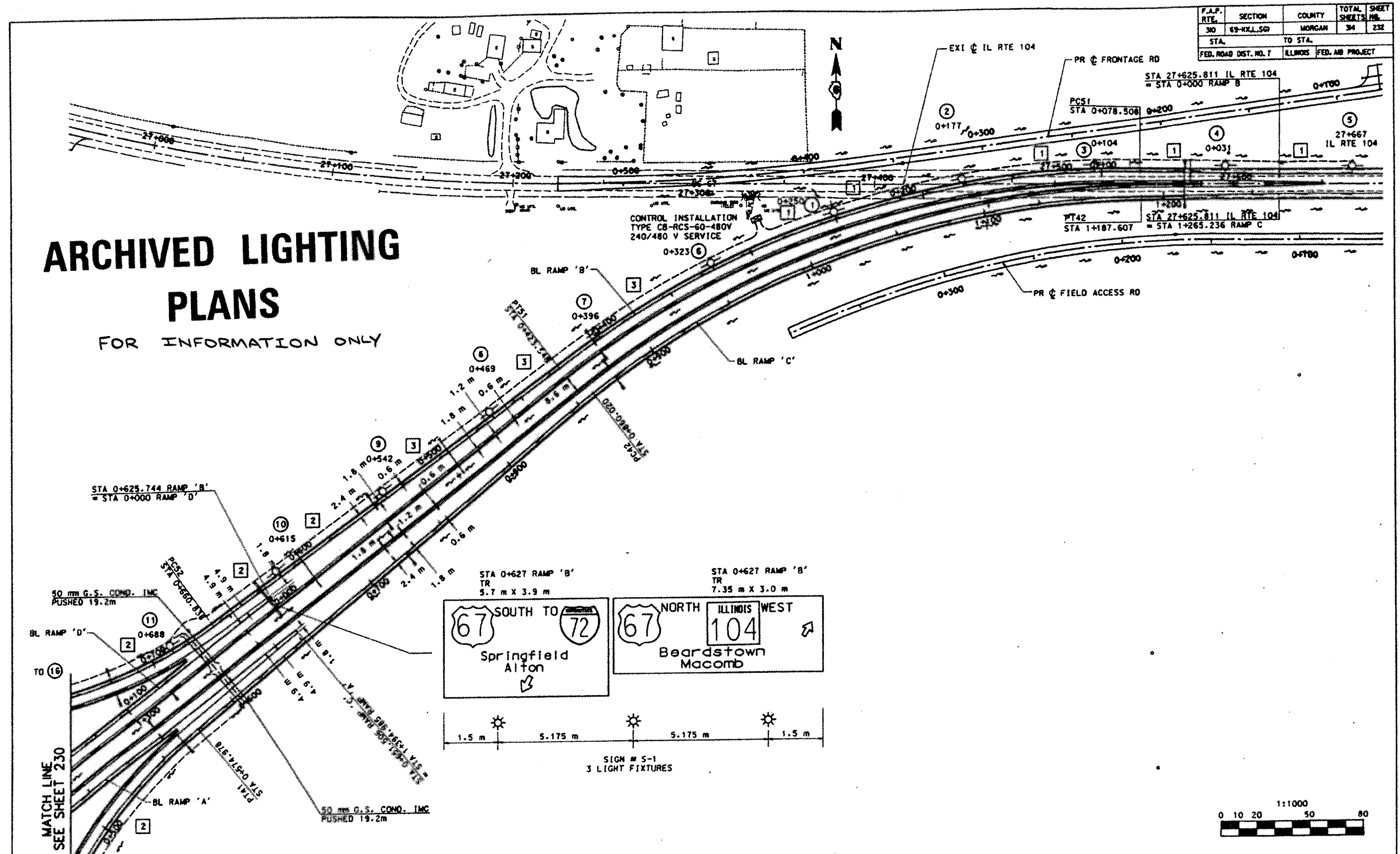
ARCHIVED LIGHTING PLANS

SCALE: _____ SHEET _____ OF _____ SHEETS STA. _____ TO STA. _____

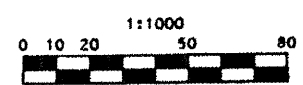
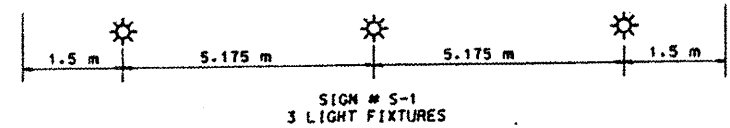
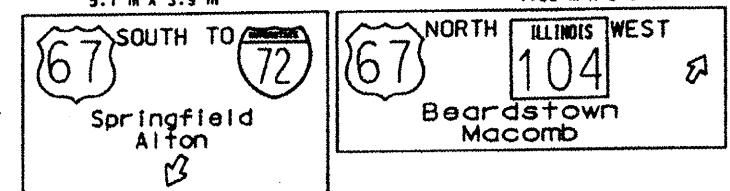
F.A.P. RTE.	SECTION	COUNTY	TOTAL SHEETS	SHEET NO.
310	69-IX-1	MORGAN	17	17
CONTRACT NO. 72E13		ILLINOIS FED. AID PROJECT		

ARCHIVED LIGHTING PLANS

FOR INFORMATION ONLY



F.A.P. RTE.	SECTION	COUNTY	TOTAL SHEETS	SHEET NO.
310	69-IXL-501	MORGAN	34	232
STA. TO STA.		ILLINOIS FED. AID PROJECT		
FED. ROAD DIST. NO. 7				



REVISIONS		ILLINOIS DEPARTMENT OF TRANSPORTATION FAP RTE 310 (US 67) AND IL RTE 104 INTERCHANGE LIGHTING DRAWN BY: RM CHECKED BY: FRB DATE: JUNE 17, 1997
NAME	DATE	

