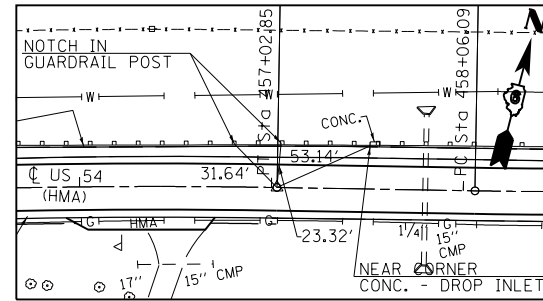
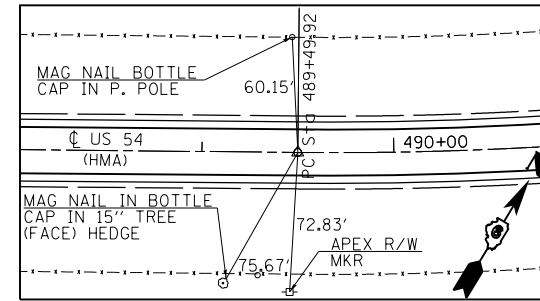


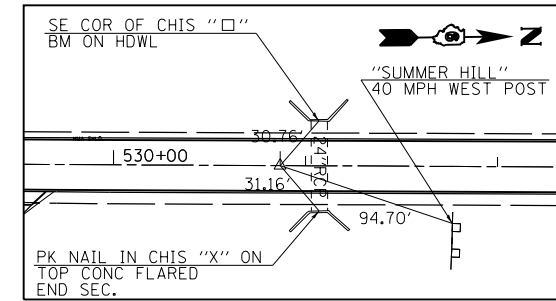
PT# 406 STA. 431+61.03 (PK NAIL & BOTTLE CAP) IN CHIS "X" IN CONC. GUTTER & TEL POLE #4 REBAR W/CAP (FLUSH) TOPO #2055



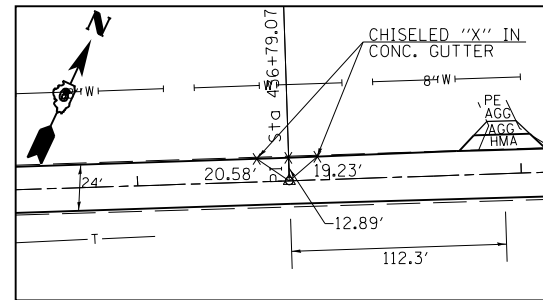
P.T. 403 457+02.853 PK N&BC W/CHSLD. "X"



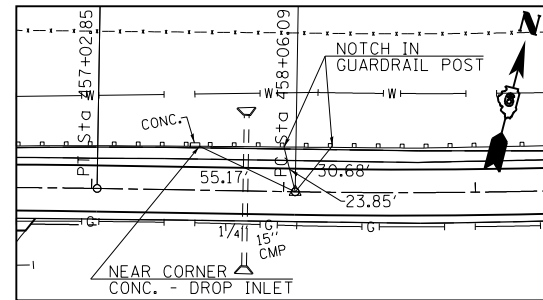
#85609 PC #20 - 489+49.92



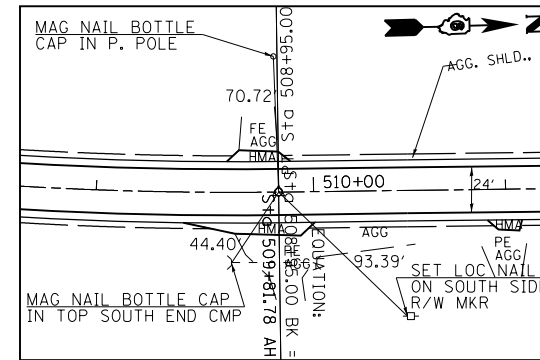
#99634 530+86.78



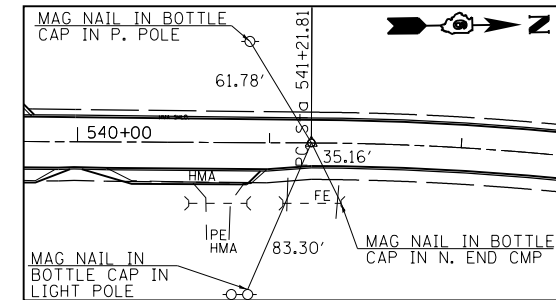
P.I. 405 436+79.070 PK N & BK BK WITH CHSLD. "X"



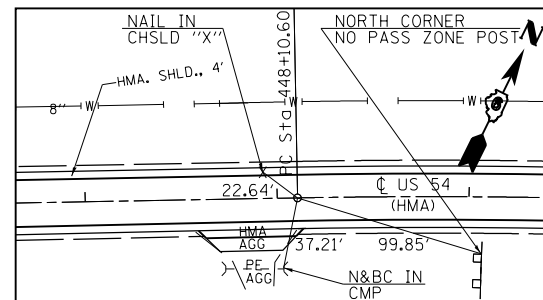
PC 402 458+06.089 N&BC W/CHSLD. "X"



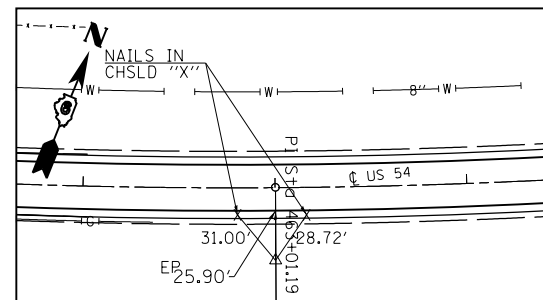
#85611 PT #20 - 508+95.00 BK 509+81.78 AH



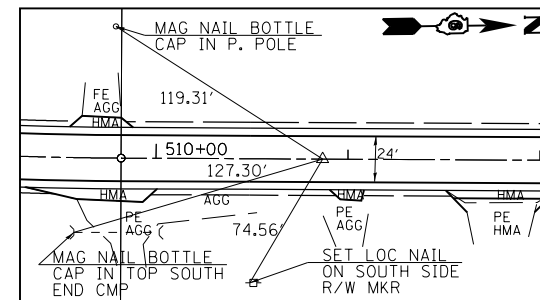
#85604 PC - 541+21.81



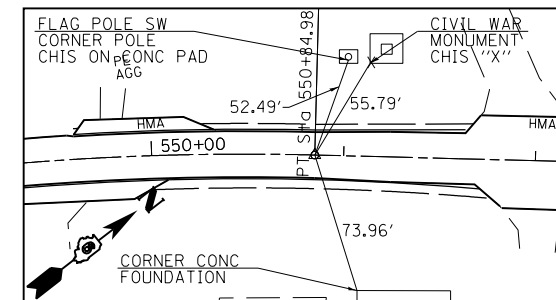
P.C. 403 448+10.603



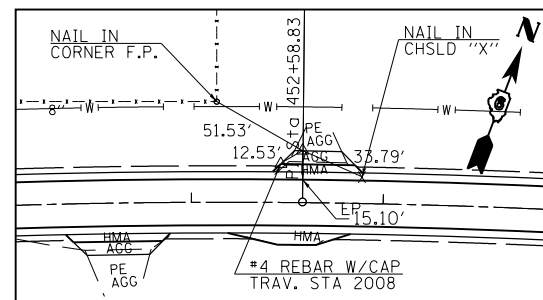
P.I. 402 463+01.189 #4 REBAR W/CAP BURIED 1"



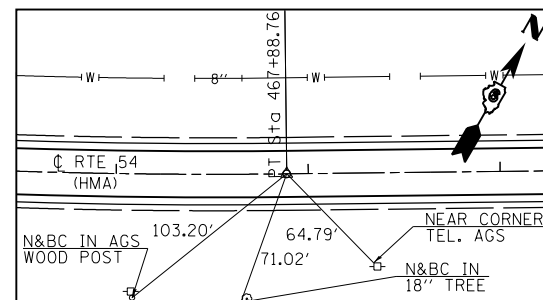
#99611 510+86.78



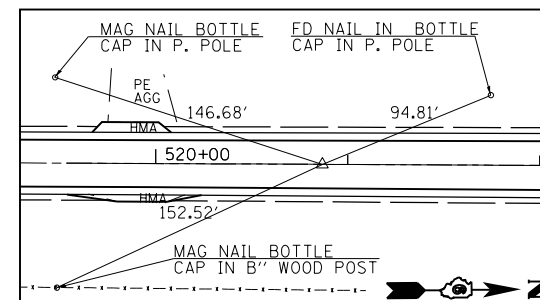
#85602 PT - 550+84.98



P.I. 403 452+58.830 #4 REBAR W/CAP BURIED 1"



P.T. 402 467+88.763 PK N&BC W/CHSLD "X"



#99633 520+86.78

• 104RS2, BR3; 105RS7, BR3, 4; 106RS6

|   |                             |                |           |   |                       |    |        |             |         |        |                           |           |
|---|-----------------------------|----------------|-----------|---|-----------------------|----|--------|-------------|---------|--------|---------------------------|-----------|
| FILE NAME =<br>c:\pwork\pwork\dot\sparksgw\10265393\067 | USER NAME = sparksgw        | DESIGNED - JWC | REVISED - | <b>STATE OF ILLINOIS<br/>DEPARTMENT OF TRANSPORTATION</b> | <b>ALIGNMENT TIES</b> |    |        | F.A.P. RTE. | SECTION | COUNTY | TOTAL SHEETS              | SHEET NO. |
|   | PLT SCALE = 100.0000' / in. | CHECKED - MSD  | REVISED - |   |                       |    |        | 321         | •       | PIKE   | 69                        | 27        |
| PLT DATE = Oct-31-2011 03:51:24PM                       | DATE -                      | REVISED -      | REVISED - | SCALE: 50   | SHEET                 | OF | SHEETS | STA.        | TO      | STA.   | CONTRACT NO. 72E43        |           |
|   |                             |                |           |   |                       |    |        |             |         |        | ILLINOIS FED. AID PROJECT |           |