

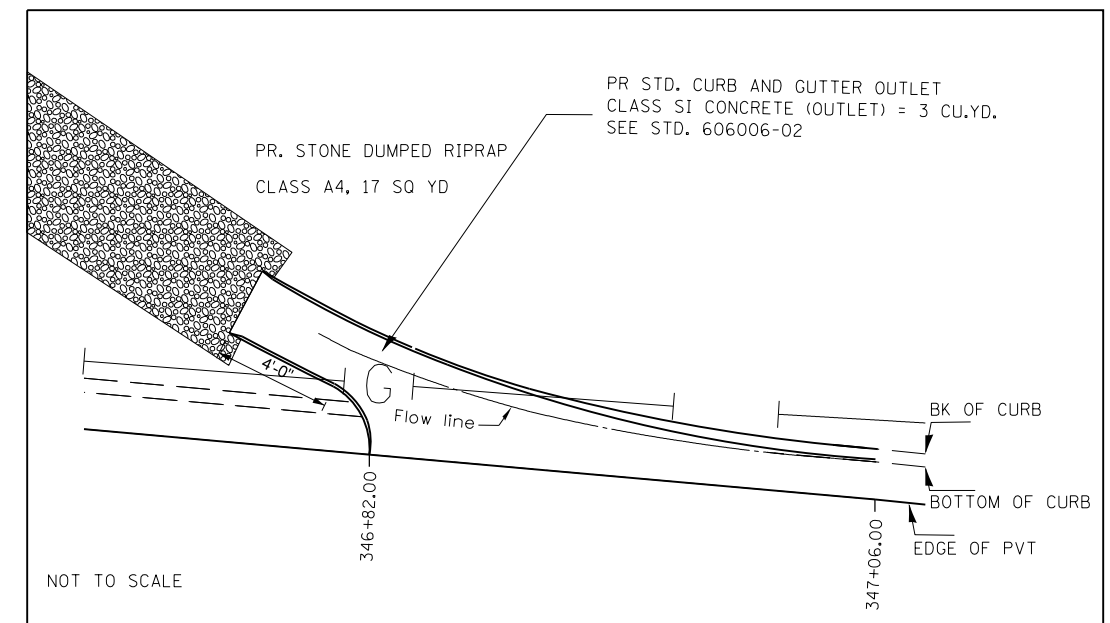
Ⓐ STA. 877+99, 27' RT ( IL 96 )  
 INLET, TYPE A, TYPE 15 FRAME AND LID, 1 EACH  
 TOP GRATE ELEV = 484.20  
 FLOWLINE NORTHEAST = 480.75'

Ⓜ STORM SEWERS, CLASS A, TYPE 1 15", 57'  
 USFL = 481.31' DSFL = 481.06'  
 SLOPE = 0.44%

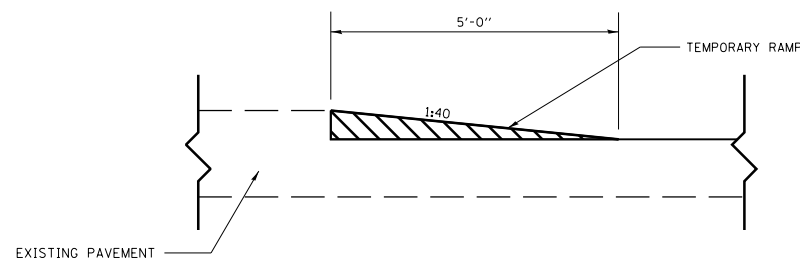
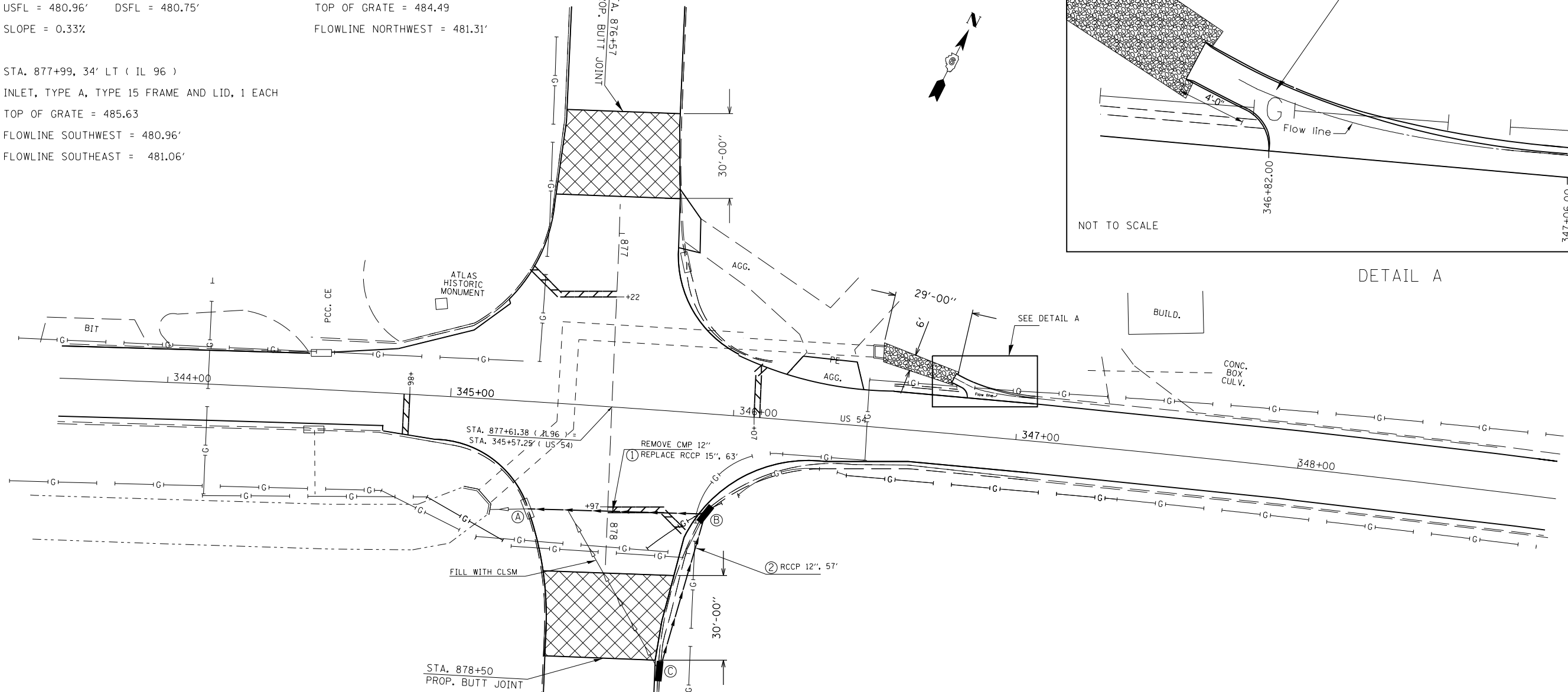
Ⓛ STORM SEWERS, CLASS A, TYPE 1 15", 63'  
 USFL = 480.96' DSFL = 480.75'  
 SLOPE = 0.33%

Ⓨ STA. 878+55, 21' LT ( IL 96 )  
 INLET, TYPE A, TYPE 15 FRAME AND LID, 1 EACH  
 TOP OF GRATE = 484.49  
 FLOWLINE NORTHWEST = 481.31'

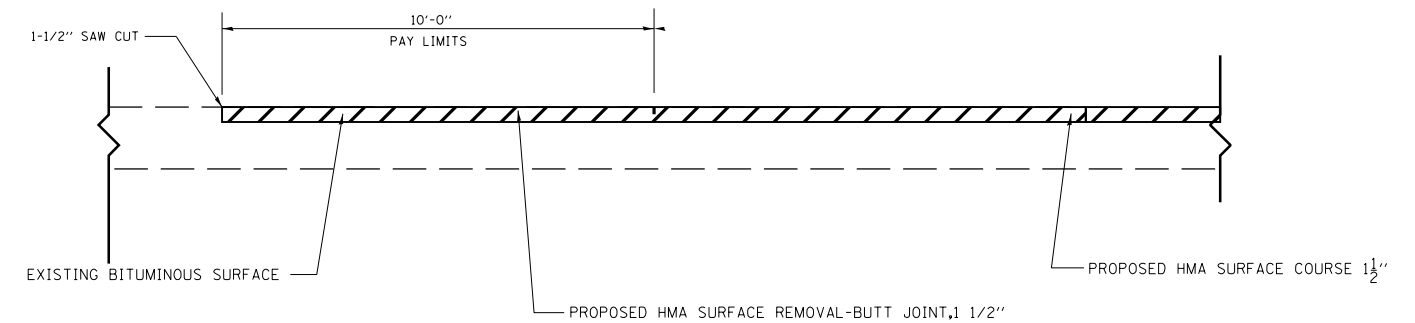
Ⓑ STA. 877+99, 34' LT ( IL 96 )  
 INLET, TYPE A, TYPE 15 FRAME AND LID, 1 EACH  
 TOP OF GRATE = 485.63  
 FLOWLINE SOUTHWEST = 480.96'  
 FLOWLINE SOUTHEAST = 481.06'



DETAIL A



TEMPORARY RAMP DETAILS



BUTT JOINT DETAILS

• 104RS2, BR3; 105RS7, BR3, 4; 106RS6

FILE NAME =	USER NAME = sparksgw	DESIGNED -	REVISED -
e:\pwork\pwork\sparksgw\10265393\0672E43-Misc details.dgn		DRAWN -	REVISED -
PLOT SCALE = 40.0000' / in.		CHECKED -	REVISED -
PLOT DATE = Oct-31-2011 03:51:48PM		DATE -	REVISED -

STATE OF ILLINOIS  
 DEPARTMENT OF TRANSPORTATION

US 54 AT IL 96  
 AND MISC. DETAILS

SCALE: SHEET NO. 1 OF 1 SHEETS STA. TO STA.

F.A.P. RTE.	SECTION	COUNTY	TOTAL SHEETS	SHEET NO.
321	•	PIKE	69	45
CONTRACT NO. 72E43				
ILLINOIS FED. AID PROJECT				