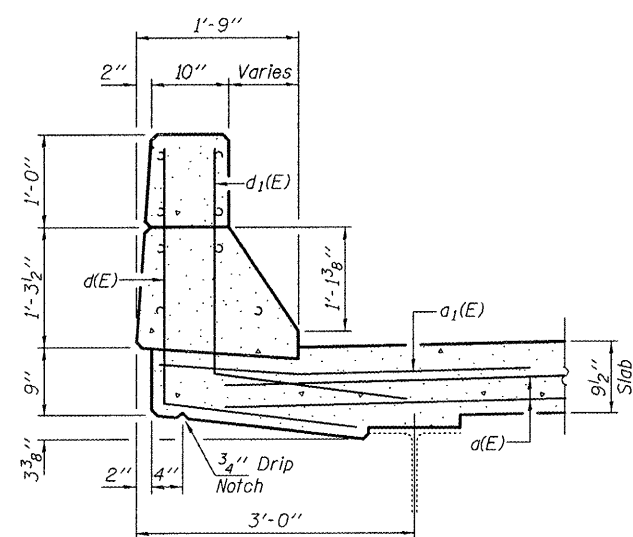
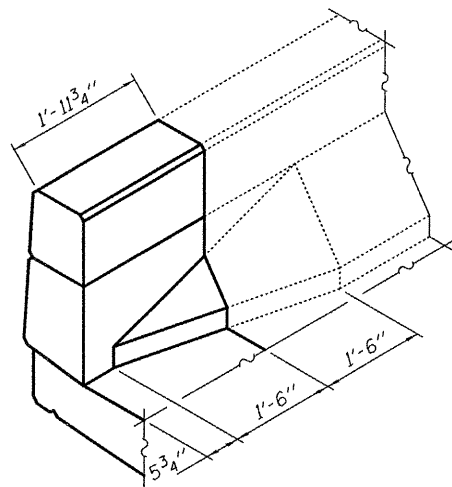


SECTION B-B



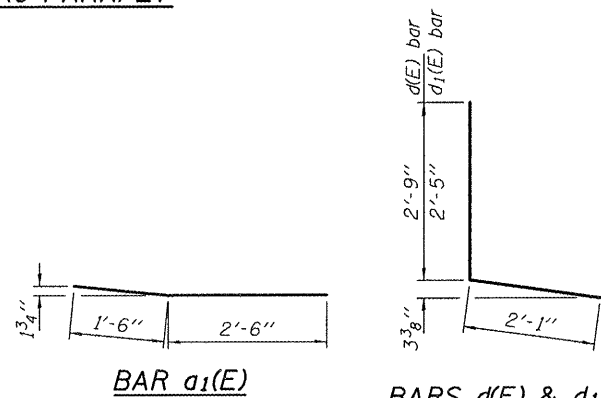
SECTION THRU PARAPET

* Existing reinforcement bars extending into the removal area shall be cleaned, straightened and incorporated into the new construction. Any reinforcement bars that are damaged during concrete removal shall be replaced with an approved bar splicer or anchorage system. Cost included with Concrete Removal.



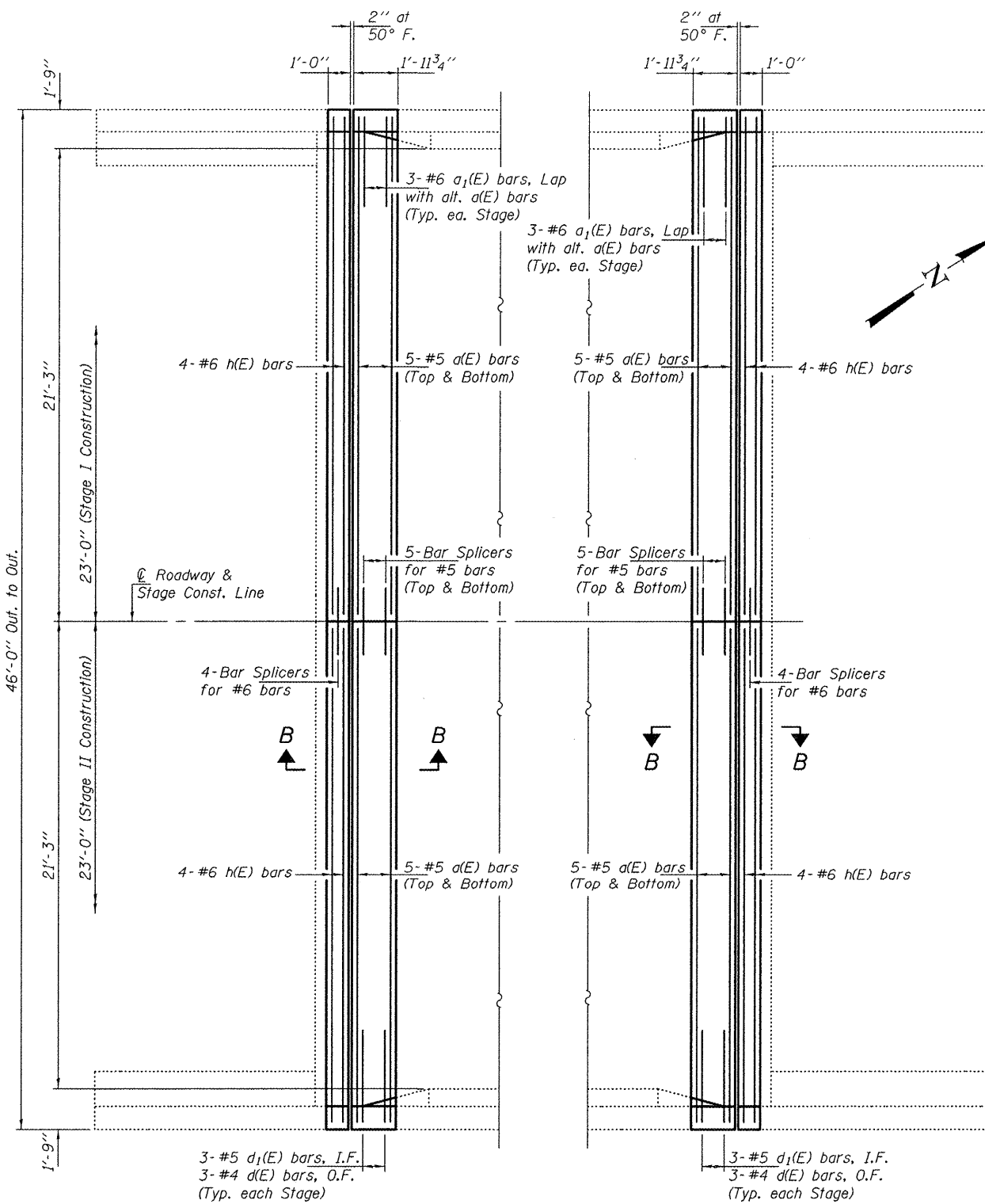
ISOMETRIC PARAPET END DETAILS

Hatch Block, Railing, and Expansion Joint not shown for clarity.



BILL OF MATERIAL

Bar	No.	Size	Length	Shape
a(E)	40	#5	22'-0"	—
a1(E)	12	#6	4'-0"	—
d(E)	12	#4	4'-10"	L
d1(E)	12	#5	4'-6"	L
h(E)	16	#6	22'-8"	—
Concrete Removal			Cu. Yd.	14.8
Concrete Superstructure			Cu. Yd.	14.7
Reinforcement Bars, Epoxy Coated			Pound	1630



CONCRETE REPLACEMENT PLAN

DESIGNED - IJL
 CHECKED - ADY
 DRAWN - Kyle M. Steffen
 CHECKED - IJL ADY

EXAMINED *James F. [Signature]* DATE - NOVEMBER 28, 2011
 ACTING ENGINEER OF STRUCTURAL SERVICES
 PASSED *[Signature]*
 ACTING ENGINEER OF BRIDGES AND STRUCTURES

STATE OF ILLINOIS
 DEPARTMENT OF TRANSPORTATION

CONCRETE REPLACEMENT DETAILS
 SN 075-0077

SHEET NO. 3 OF 5 SHEETS

F.A.P. RTE.	SECTION	COUNTY	TOTAL SHEETS	SHEET NO.
321	104RS2, BR3;	PIKE	69	60
	105RS7, BR3, 4; 106RS6	CONTRACT NO. 72E43		

ILLINOIS FED. AID PROJECT