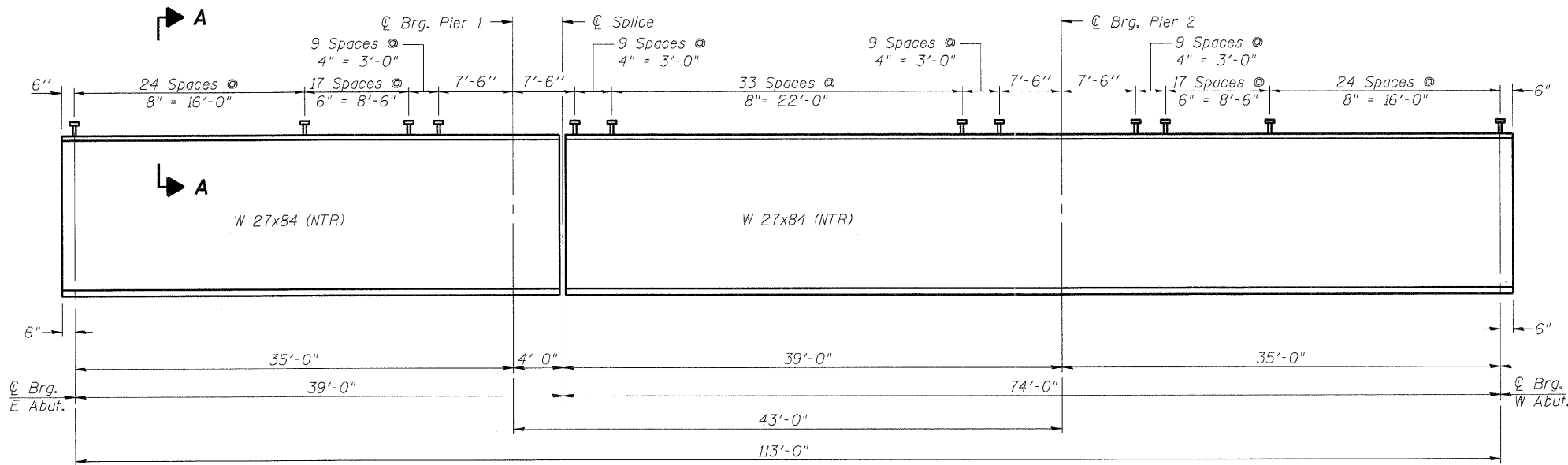
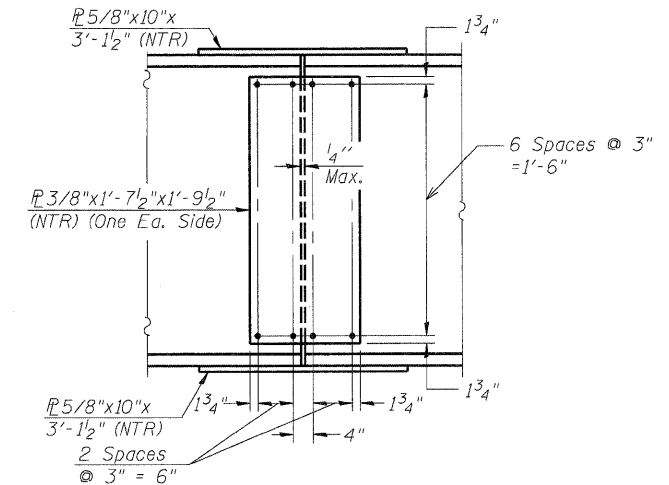


**FRAMING PLAN**

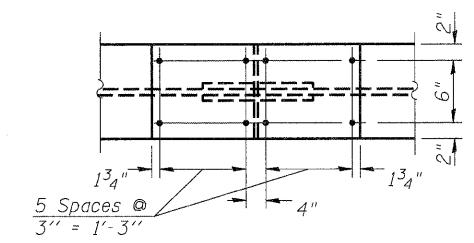


**GIRDER ELEVATION**

"NTR" denotes plates to which notch toughness requirements are applicable.



**ELEVATION**



**PLAN (TOP AND BOTTOM FLANGE)**

**FIELD SPLICE DETAIL**

Note:  
 For section A-A, see sheet 15 of 24.  
 See sheet 15 of 24 for diaphragm D and D1 details.  
 Load carrying components designated "NTR" shall conform to the Supplemental Requirements for Notch Toughness, Zone 2.  
 Structural steel for all girders (W27x84) and splice plates shall be AASHTO M270 Grade 50.

PRINTED DATE: 12/05/2011  
 FILE NAME: c:\projects\2011\148\148.dwg  
 ORDER: 085\cadd\drawings\steel\order\_085\cadd\drawings\steel\148\_W05\_StructSteel.dwg

DESIGNED	-	SMA
CHECKED	-	DF
DRAWN	-	ADG
CHECKED	-	DF

**ESI CONSULTANTS, LTD**  
 753 WINDSOR ROAD  
 CHARLESTON, IL 61920  
 (217) 348-1900  
 WWW.ESICONSULTANTS.LTD.COM  
 ILLINOIS DEPARTMENT OF PROFESSIONAL REGULATION REGISTRATION #134-003685

**STATE OF ILLINOIS  
 DEPARTMENT OF TRANSPORTATION**

**STRUCTURAL STEEL  
 STRUCTURE NO. 096-0074**  
 SHEET NO. 14 OF 24 SHEETS

F.A.P. RTE.	SECTION	COUNTY	TOTAL SHEETS	SHEET
823	(22,B2A)B-1 & (22,B2B)B-1	Wayne	85	28
CONTRACT NO. 74216			ILLINOIS FEDERAL AID PROJECT	