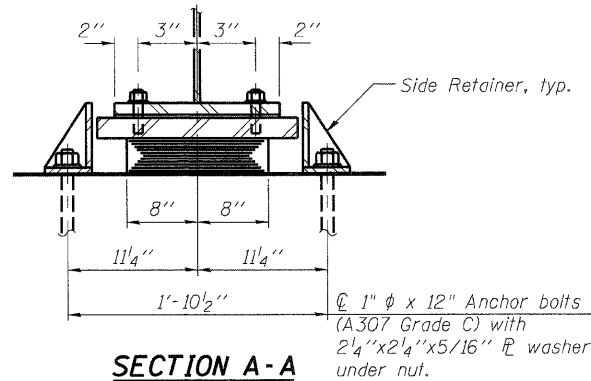
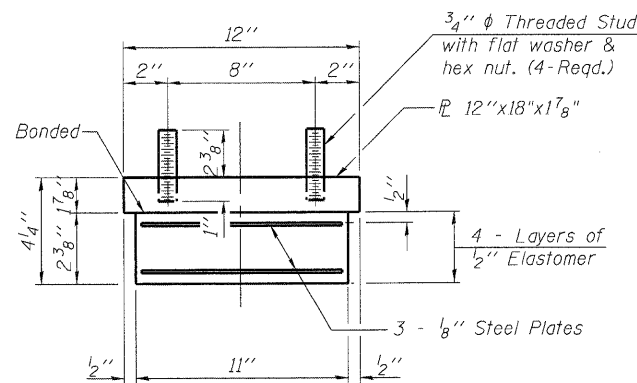


ELEVATION AT PIER



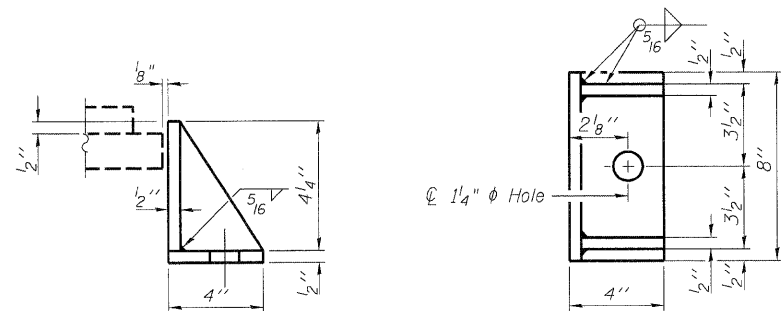
SECTION A-A

TYPE I ELASTOMERIC EXP. BRG.



BEARING ASSEMBLY

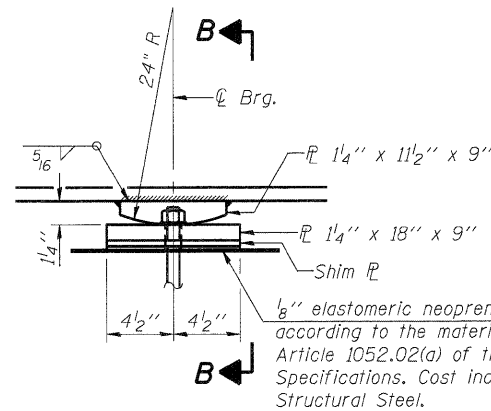
Note:
Shim plates shall not be placed under Bearing Assembly.



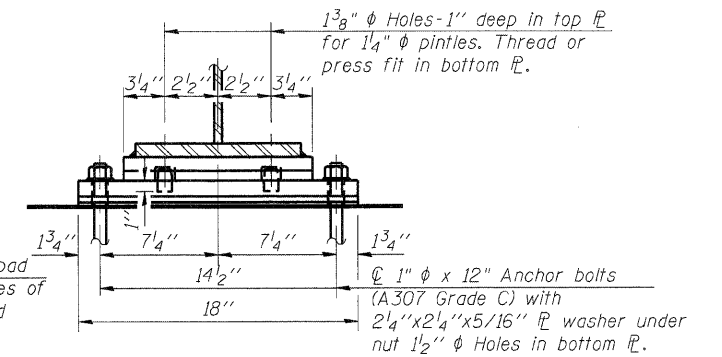
SIDE RETAINER

Equivalent rolled angle with stiffeners will be allowed in lieu of welded plates.

PIER 2

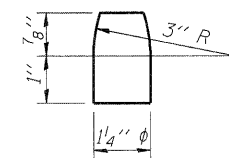


ELEVATION AT PIER



SECTION B-B

FIXED BEARING



PINTLE

PIER 1

Notes:
Anchor bolts shall be ASTM F1554 all-thread (or an Engineer-approved alternate material) of the grade(s) and diameter(s) specified. ASTM A307 Grade C anchor bolts may be used in lieu of ASTM F1554 Grade 36 (Fy=36ksi). The corresponding specified grade of AASHTO M314 anchor bolts may be used in lieu of ASTM F1554.
Anchor bolts at fixed bearings may be either cast in place or installed in holes drilled after the supported member is in place.
Anchor bolts for side retainers may be cast in place or installed in holes drilled before or after members are in place.
Drilled and set anchor bolts shall be installed according to Article 521.06 of the Standard Specifications.
Side retainers and other steel members required for the elastomeric bearing assembly shall be included in the cost of Elastomeric Bearing Assembly, Type I.
The structural steel plates of the Bearing Assembly shall conform to the requirements of AASHTO M 270 Grade 50.
Two 1/8 in. adjusting shims shall be provided for each bearing in addition to all other plates or shims and placed as shown on bearing details.
The anchor bolt sizes and grades shown constitute a calculated seismic structural fuse. Substitution of higher diameter and/or grade anchor bolts will not be allowed.
The structural steel plates and pintles of the Fixed Bearings shall conform to the requirements of AASHTO M270 Grade 50.

BILL OF MATERIAL

Item	Unit	Total
Elastomeric Bearing Assembly Type I	Each	6
Anchor Bolts, 1"	Each	24

PRINTED DATE: 12/5/2011
 FILE NAME: C:\projects\des\p148\tem 25 - 47 - various design\work order 06\cond\drawings\sheet\31.M06.BrgDet.Fair.dgn

DESIGNED -	ADG
CHECKED -	DF
DRAWN -	ADG
CHECKED -	DF

ESI CONSULTANTS, LTD
 753 WINDSOR ROAD
 CHARLESTON, IL 61920
 (717) 346-1999
 WWW.ESICONSULTANTS.LTD.COM
 ILLINOIS DEPARTMENT OF PROFESSIONAL REGULATION REGISTRATION #164-003685

STATE OF ILLINOIS
 DEPARTMENT OF TRANSPORTATION

PIER BEARING DETAILS
 STRUCTURE NO. 096-0074

SHEET NO. 17 OF 24 SHEETS

F.A.P. RTE.	SECTION	COUNTY	TOTAL SHEETS
823	(22.B2A)B-1 & (22.B2B)B-1	Wayne	85 31
			CONTRACT NO. 74216
ILLINOIS FEDERAL AID PROJECT			