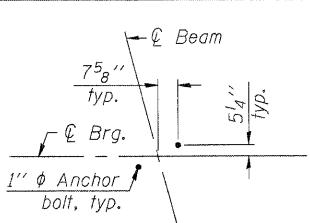
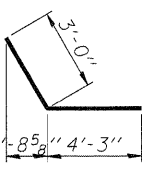


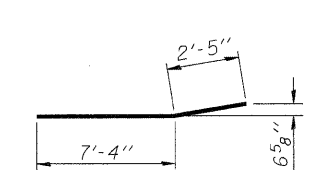
BAR h₁(E)



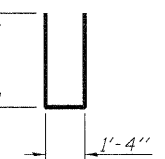
ANCHOR BOLT LAYOUT



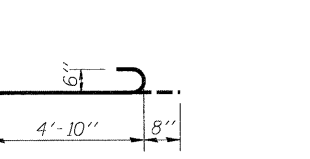
BAR h₂(E)



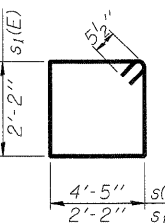
BAR h₄(E)



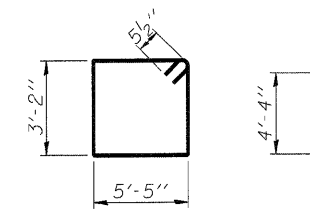
BAR n(E)



BAR n₁(E)

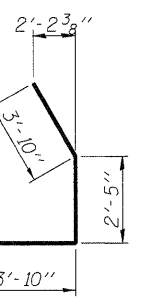


BARS s(E) & s₁(E)

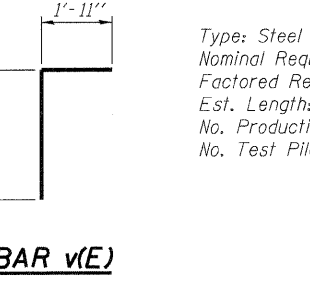


BAR s₂(E)

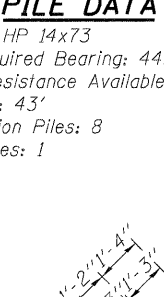
BAR u(E)



BAR v₁(E)

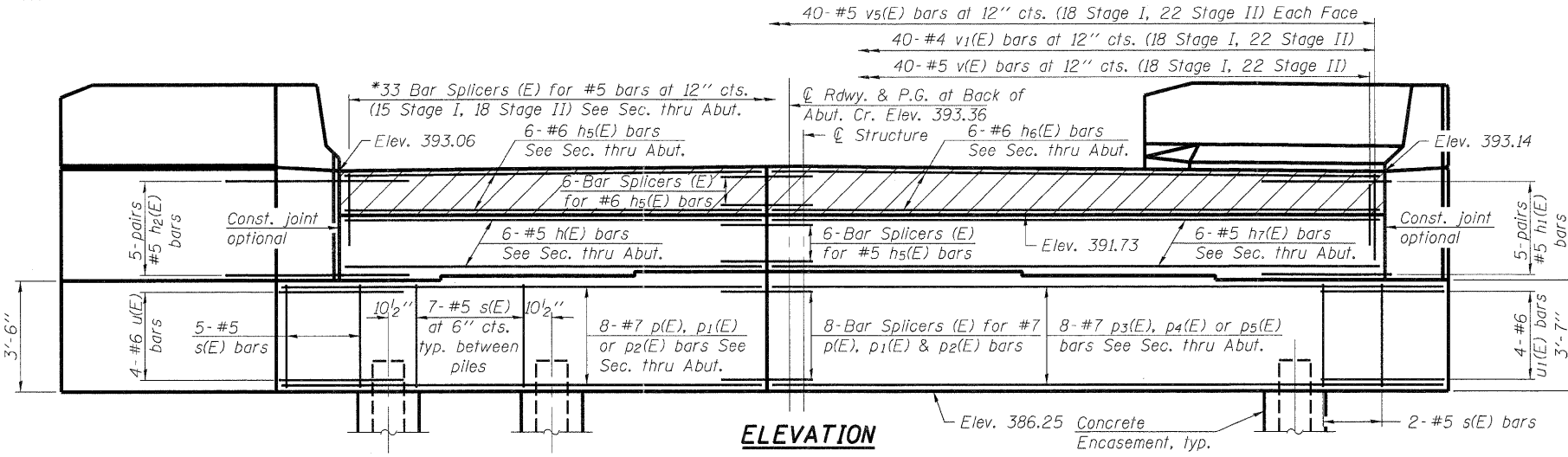


BAR v₃(E)

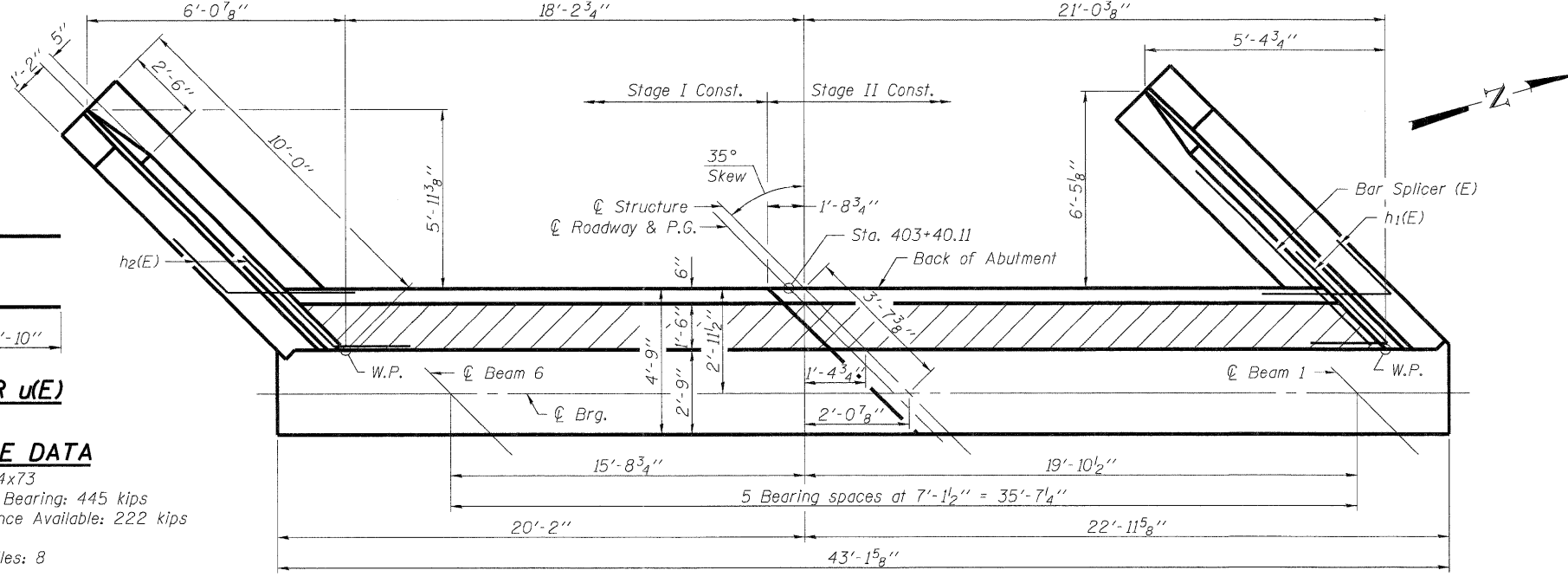


BAR v₄(E)

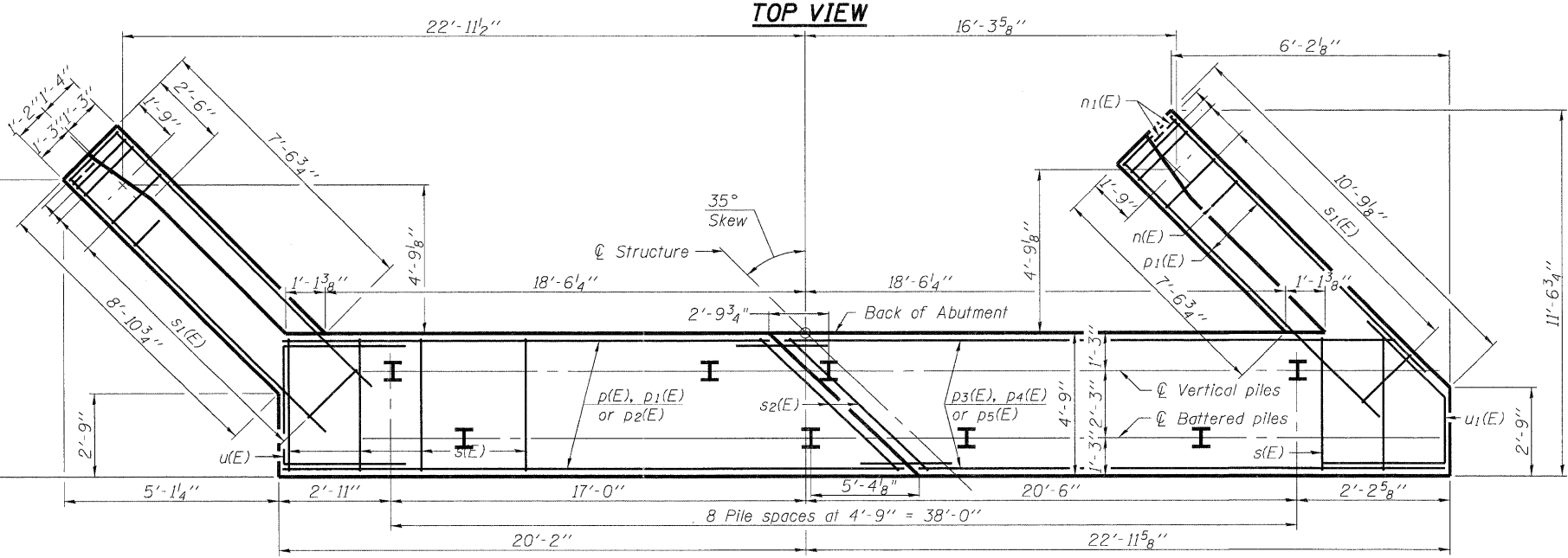
PILE DATA
 Type: Steel HP 14x73
 Nominal Required Bearing: 445 kips
 Factored Resistance Available: 222 kips
 Est. Length: 43'
 No. Production Piles: 8
 No. Test Piles: 1



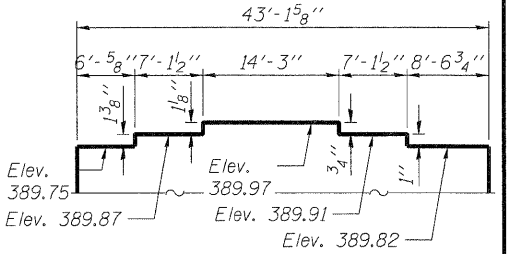
ELEVATION



TOP VIEW



PLAN-PILE CAP



STEP DETAIL

Note:
 Step dimensions are along front face of abutment.

ABUTMENT BILL OF MATERIAL

Bar	No.	Size	Length	Shape
h(E)	6	#5	17'-9"	—
h ₁ (E)	6	#5	7'-3"	↗
h ₂ (E)	6	#5	7'-3"	↘
h ₃ (E)	20	#4	9'-8"	—
h ₄ (E)	12	#4	9'-9"	—
h ₅ (E)	6	#6	17'-9"	—
h ₆ (E)	6	#6	21'-2"	—
h ₇ (E)	6	#5	21'-2"	—
n(E)	16	#6	11'-0"	—
n ₁ (E)	12	#6	5'-6"	—
p(E)	3	#7	18'-2"	—
p ₁ (E)	2	#7	19'-10"	—
p ₂ (E)	3	#7	21'-4"	—
p ₃ (E)	3	#7	23'-2"	—
p ₄ (E)	2	#7	22'-9"	—
p ₅ (E)	3	#7	21'-3"	—
s(E)	63	#5	16'-1"	□
s ₁ (E)	22	#5	9'-7"	□
s ₂ (E)	2	#5	18'-1"	□
u(E)	4	#6	12'-0"	—
u ₁ (E)	4	#6	10'-1"	—
v(E)	40	#4	3'-7"	—
v ₁ (E)	40	#4	3'-3"	—
v ₂ (E)	22	#6	5'-9"	—
v ₃ (E)	22	#6	5'-0"	—
v ₄ (E)	16	#6	5'-11"	—
v ₅ (E)	80	#5	6'-1"	—

Structure Excavation	Cu. Yd.	116.4
Concrete Structures	Cu. Yd.	45.5
Reinforcement Bars, Epoxy Coated	Pound	4580
Furnishing Steel Piles, HP 14x73	Foot	344
Driving Piles	Foot	344
Test Pile Steel HP 14x73	Each	1
Concrete Encasement	Cu. Yd.	4.4
Concrete Sealer	Sq. Ft.	421

For details of Bar Splicers (E), see sheet 23 of 24.
 For details of piles and Concrete Encasement, see sheet 22 of 24.

* Align Bar Splicers (E) parallel to approach slab reinforcement.

Notes:
 Concrete Sealer shall be applied to all exposed surfaces of backwall, bridge seat and front face of pile cap.

PRINTED DATE: 12/05/2011
 FILE NAME: c:\projects\10000000\10000000.dwg
 DESIGNED: ADG
 CHECKED: DF
 DRAWN: ADG
 CHECKED: DF

A-1-L (>30°) 7-1-10

DESIGNED	-	ADG
CHECKED	-	DF
DRAWN	-	ADG
CHECKED	-	DF

ESI CONSULTANTS, LTD
 753 WINDSOR ROAD
 CHARLESTON, IL 61920
 (217) 348-1800
 WWW.ESI-CONSULTANTS.LTD.COM
 ILLINOIS DEPARTMENT OF PROFESSIONAL REGULATION REGISTRATION #184-003685

STATE OF ILLINOIS
 DEPARTMENT OF TRANSPORTATION

WEST ABUTMENT
 STRUCTURE NO. 096-0074
 SHEET NO. 18 OF 24 SHEETS

F.A.P. RTE.	SECTION	COUNTY	TOTAL SHEETS	SHEET
823	(22,B2A)B-1 & (22,B2B)B-1	Wayne	85	32

CONTRACT NO. 74216
 ILLINOIS FEDERAL AID PROJECT