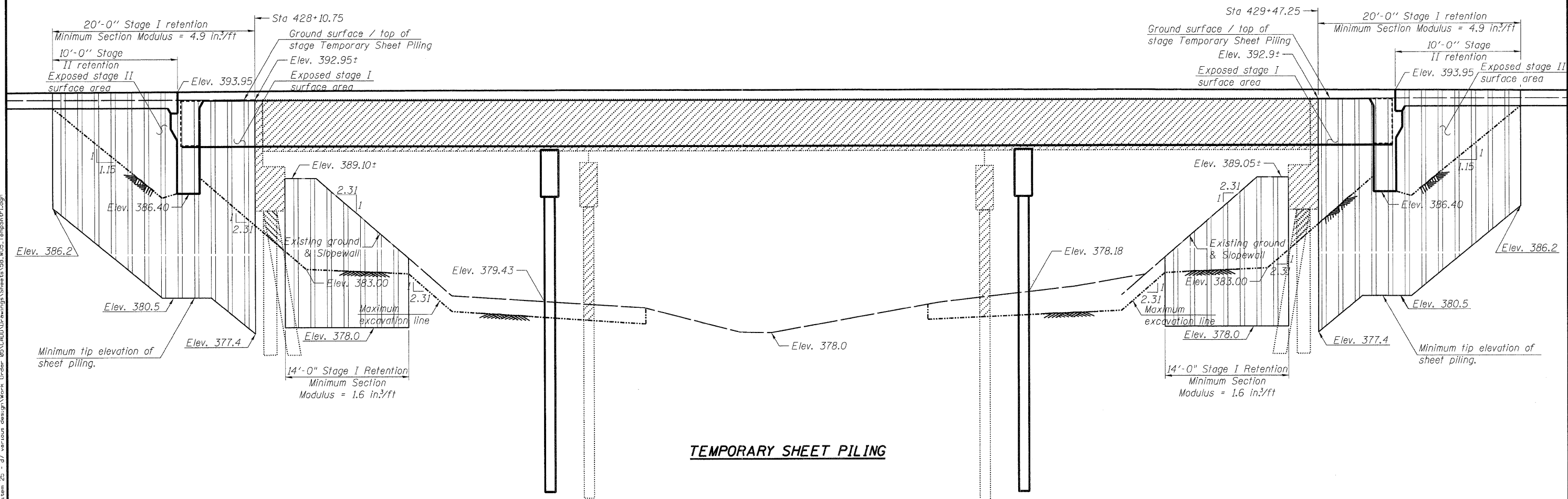
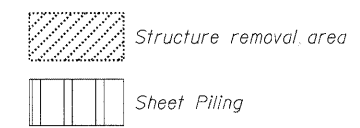


If the Contractor chooses to alter the temporary cantilevered sheet piling design requirements shown on the plans, a design submittal including plan details and calculations will be required for review and acceptance by the Engineer.



PRINTED DATE: 12/16/2011
 FILE NAME: c:\projects\2011\148\1\item 25 - d7\various design\Work Order 096\CAD\Drawings\Sheets\58_W09_TempShp1.dwg



(Sheet 2 of 2)

DESIGNED	-	ADG
CHECKED	-	DF
DRAWN	-	ADG
CHECKED	-	DF

ESI CONSULTANTS, LTD
 753 WINDSOR ROAD
 CHARLESTON, IL 61920
 (717) 348-1800
 WWW.ESICONSULTANTS.LTD.COM
 ILLINOIS DEPARTMENT OF PROFESSIONAL REGULATION REGISTRATION #184-003685

STATE OF ILLINOIS
DEPARTMENT OF TRANSPORTATION

GENERAL DATA & DETAILS
TEMPORARY SHEET PILING **STRUCTURE NO. 096-0073**

F.A.P. RTE	SECTION	COUNTY	TOTAL SHEETS	SHEET NO
823	(22,B2A)B-1 & (22,B2B)B-1	Wayne	85	58
CONTRACT NO 74216				
ILLINOIS FEDERAL AID PROJECT				

SHEET NO. 3 OF 24 SHEETS