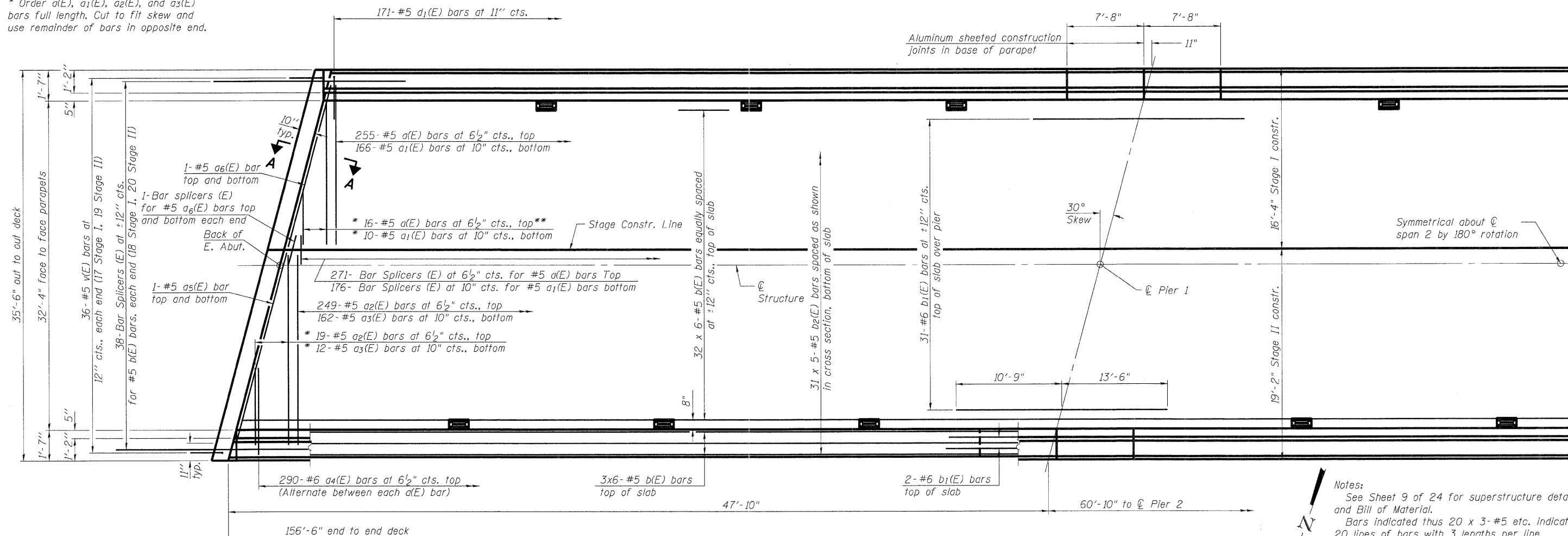


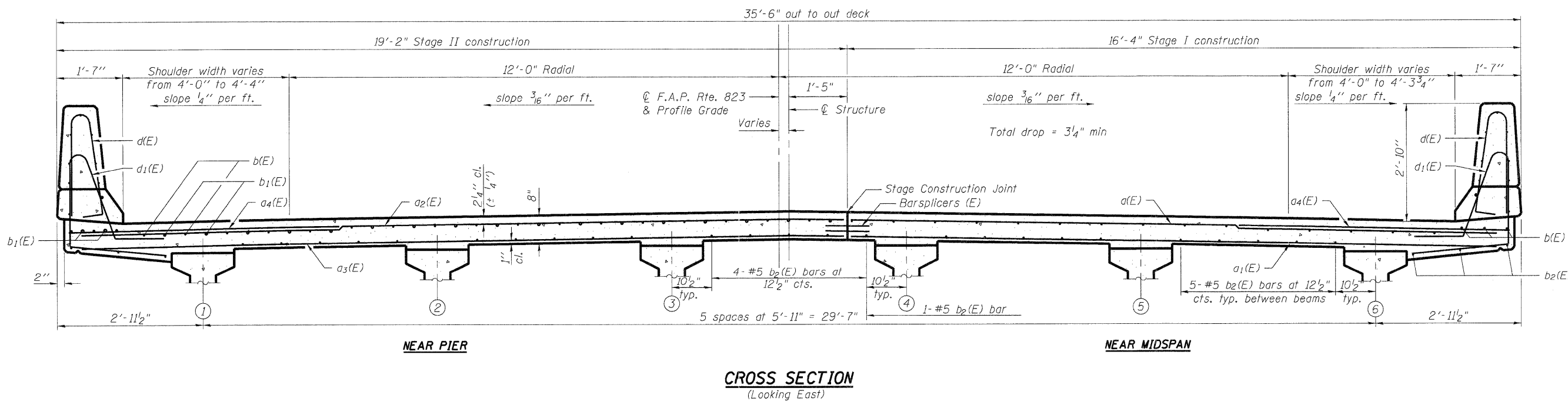
* Order a(E), a₁(E), a₂(E), and a₃(E) bars full length. Cut to fit skew and use remainder of bars in opposite end.



PARTIAL PLAN

Notes:
 See Sheet 9 of 24 for superstructure details and Bill of Material.
 Bars indicated thus 20 x 3-#5 etc. indicates 20 lines of bars with 3 lengths per line.
 See Sheet 9 of 24 for parapet reinforcement.
 See Sheet 10 of 24 for Section A-A.

MIN. BAR LAP
 #5 Bar = 2'-7"



CROSS SECTION
 (Looking East)

PRINTED DATE: 12/15/2011
 FILE NAME: e:\projects\148\148.dwg

DESIGNED	SMA
CHECKED	DF
DRAWN	ADG
CHECKED	DF

ESI CONSULTANTS, LTD
 753 WINDSOR ROAD
 CHARLESTON, IL 61920
 (217) 348-1900
 WWW.ESICONSULTANTS.LTD.COM
 ILLINOIS DEPARTMENT OF PROFESSIONAL REGULATION REGISTRATION #184-003695

STATE OF ILLINOIS
 DEPARTMENT OF TRANSPORTATION

SUPERSTRUCTURE
 STRUCTURE NO. 096-0073

SHEET NO. 8 OF 24 SHEETS

F.A.P. RTE. 823	SECTION (22,B2A)B-1 & (22,B2B)B-1	COUNTY Wayne	TOTAL SHEETS 85	SHEET NO. 63
CONTRACT NO 74216			ILLINOIS FEDERAL AID PROJECT	