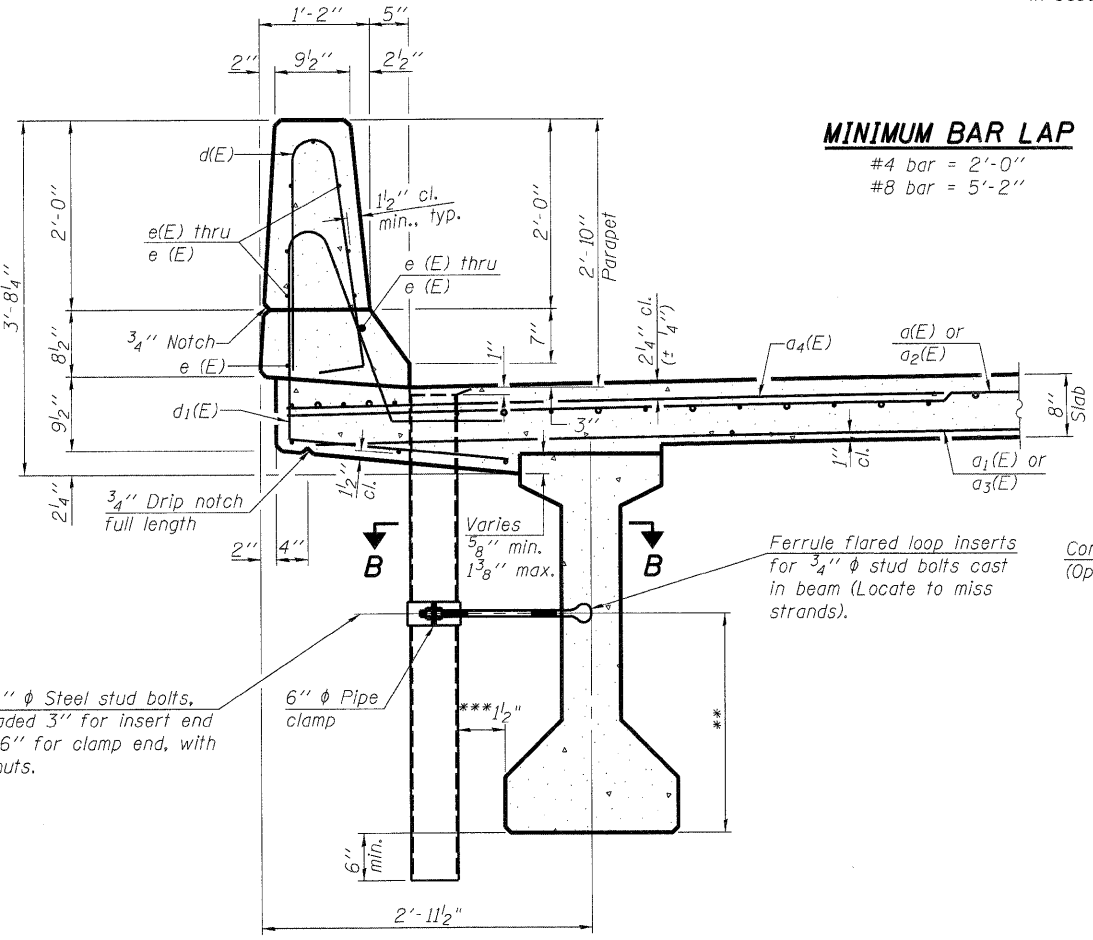
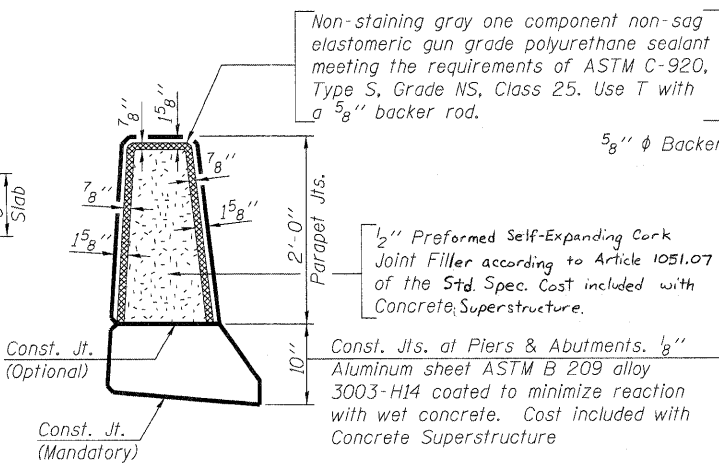


**INSIDE ELEVATION OF PARAPET**



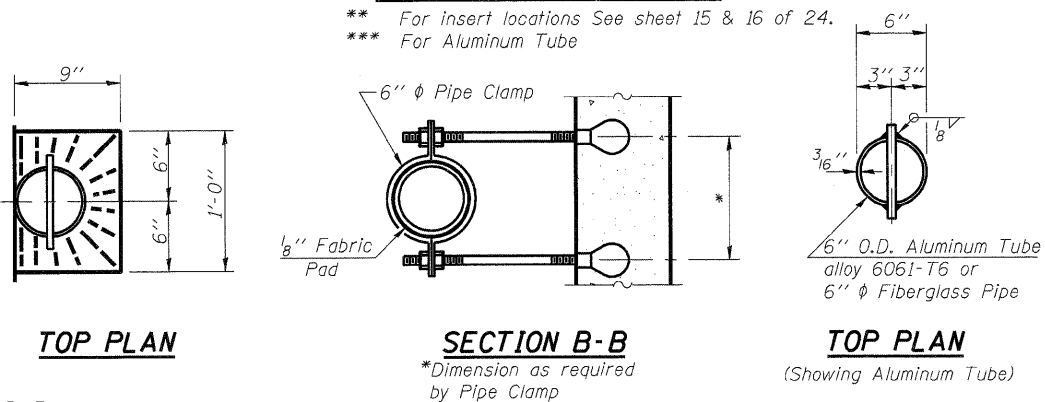
**SECTION THRU PARAPET**

**MINIMUM BAR LAP**  
 #4 bar = 2'-0"  
 #8 bar = 5'-2"



**PARAPET JOINT DETAILS**

**Notes:**  
 Fiberglass pipe shall conform to ASTM D2996, with short-time rupture strength hoop tensile stress of 30,000 p.s.i. minimum.  
 The exterior surfaces of the floor drains shall be coated or pigmented by the manufacturer with a color that matches the concrete.  
 The clamping device and inserts shall be galvanized according to AASHTO M 232. Cost of clamping device and galvanizing included with Floor Drains.



**TOP PLAN**

**SECTION B-B**

**TOP PLAN**

**ALUMINUM TUBE**

**FIBERGLASS PIPE**

**BAR s(E)**

**BAR d1(E)**

**BAR s1(E)**

**BAR v(E)**

**BAR m10(E)**

**BAR s2(E)**  
**SUPERSTRUCTURE**  
**BILL OF MATERIAL**

Bar	No.	Size	Length	Shape
a(E)	271	#5	15'-11"	—
a1(E)	176	#5	15'-4"	—
a2(E)	268	#5	19'-3"	—
a3(E)	174	#5	18'-8"	—
a4(E)	580	#6	6'-6"	—
a5(E)	4	#5	21'-7"	—
a6(E)	4	#5	17'-9"	—
b(E)	228	#5	28'-3"	—
b1(E)	62	#6	24'-3"	—
b2(E)	155	#5	33'-4"	—
d(E)	342	#5	5'-7"	—
d1(E)	342	#5	6'-6"	—
e(E)	56	#4	19'-9"	—
e1(E)	4	#8	38'-10"	—
e2(E)	8	#4	20'-11"	—
e3(E)	64	#4	7'-4"	—
e4(E)	8	#8	7'-4"	—
e5(E)	28	#4	22'-5"	—
e6(E)	8	#8	25'-2"	—
e7(E)	8	#4	23'-7"	—
m(E)	10	#6	18'-5"	—
m1(E)	12	#6	8'-5"	—
m2(E)	24	#6	4'-8"	—
m3(E)	4	#6	2'-2"	—
m4(E)	6	#6	0'-9"	—
m5(E)	10	#6	21'-9"	—
m6(E)	12	#6	9'-7"	—
m7(E)	6	#6	3'-10"	—
m8(E)	32	#4	5'-10"	—
m9(E)	8	#4	1'-2"	—
m10(E)	12	#8	5'-6"	—
m11(E)	8	#4	4'-5"	—
s(E)	82	#5	6'-10"	—
s1(E)	64	#4	10'-4"	—
s2(E)	52	#4	10'-2"	—
v(E)	72	#5	3'-11"	—
Reinforcement Bars, Epoxy Coated		Lbs.		46240
Concrete Superstructure		Cu. Yds.		62.8
Bridge Deck (Shrink-Comp Concrete)		Cu. Yds.		141.6

Bars indicated thus 1 x 3 - #8 etc. indicates 1 line of bars with 3 lengths per line.

PRINTED DATE: 12/05/2011  
 FILE NAME: c:\projects\ltd\sp15b 1481 item 25 - 27 various design\work order 05\CRD\ND-earings\Sheet 154 - MO5 Super-Design

**PI-I-D** 7-1-10

DESIGNED	-	SMA
CHECKED	-	DF
DRAWN	-	ADC
CHECKED	-	DF

**ESI CONSULTANTS, LTD**  
 753 WINDSOR ROAD  
 CHARLESTON, IL 61920  
 (217) 348-1900  
 WWW.ESI-CONSULTANTS.LTD.COM  
 ILLINOIS DEPARTMENT OF PROFESSIONAL REGULATION REGISTRATION #184-003685

**STATE OF ILLINOIS**  
**DEPARTMENT OF TRANSPORTATION**

**SUPERSTRUCTURE DETAILS**  
**STRUCTURE NO. 096-0073**  
 SHEET NO. 9 OF 24 SHEETS

F.A.P. RTE.	SECTION	COUNTY	TOTAL SHEETS	SHEET NO.
823	(22,B2A)B-1 & (22,B2B)B-1	Wayne	85	64

CONTRACT NO 74216  
 ILLINOIS FEDERAL AID PROJECT