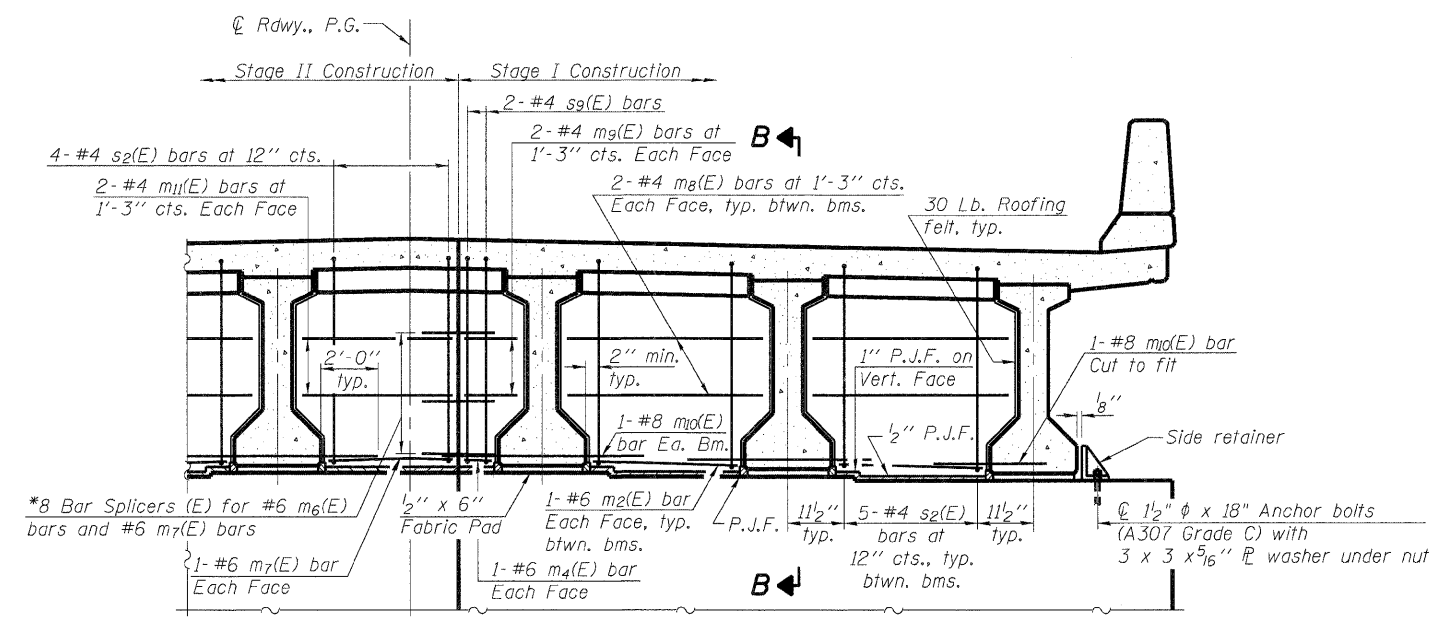


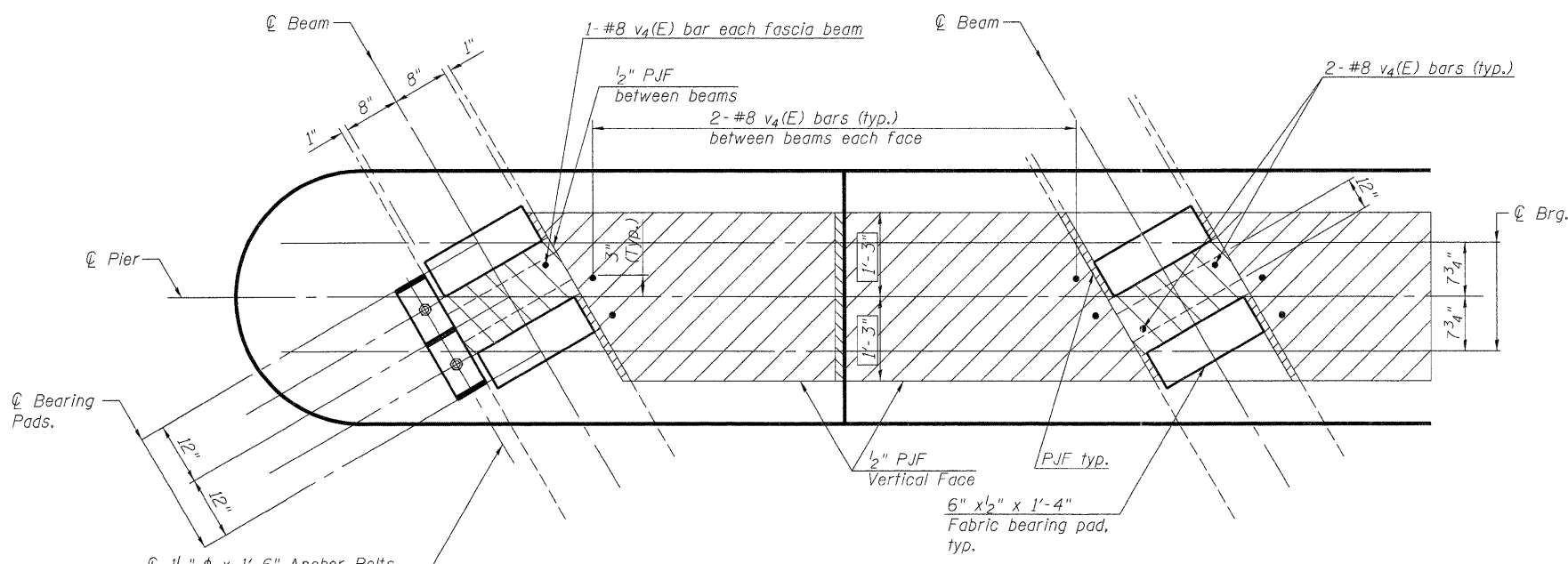
SIDE RETAINER
 (2 required each side of pier).
 Equivalent rolled angle with stiffeners
 will be allowed in lieu of welded plates.

Notes:
 Reinforcement bars in diaphragm are billed with superstructure on sheet 9 of 24.
 Concrete in diaphragm is included with Concrete Superstructure on sheet 9 of 24.
 For details of bars s₂(E) see sheet 9 of 24.
 The s₂(E) bars shall be placed parallel to the beams.
 Spacing for these bars shall be at right angles to the beams.
 Cost of 30 Lb. roofing felt is included with Concrete Superstructure.
 The side retainer shall be galvanized after shop fabrication according to AASHTO M 111.
 Anchor bolt assemblies shall be galvanized according to Article 1006.09 of the Standard Specifications.
 Anchor bolts shall be ASTM F1554 all-thread (or an Engineer-approved alternate material) of the grade(s) and diameter(s) specified. ASTM A307 Grade C anchor bolts may be used in lieu of ASTM F1554 Grade 36 (F_y=36ksi). The corresponding specified grade of AASHTO M314 anchor bolts may be used in lieu of ASTM F1554.
 Anchor bolts for side retainers may be either cast in place or installed in holes drilled after the supporting member is in place and prior to pouring the deck.
 Drilled and set anchor bolts shall be installed according to Article 521.06 of the Standard Specifications.
 Cost of side retainer and anchor bolts shall be included with Concrete Structures.

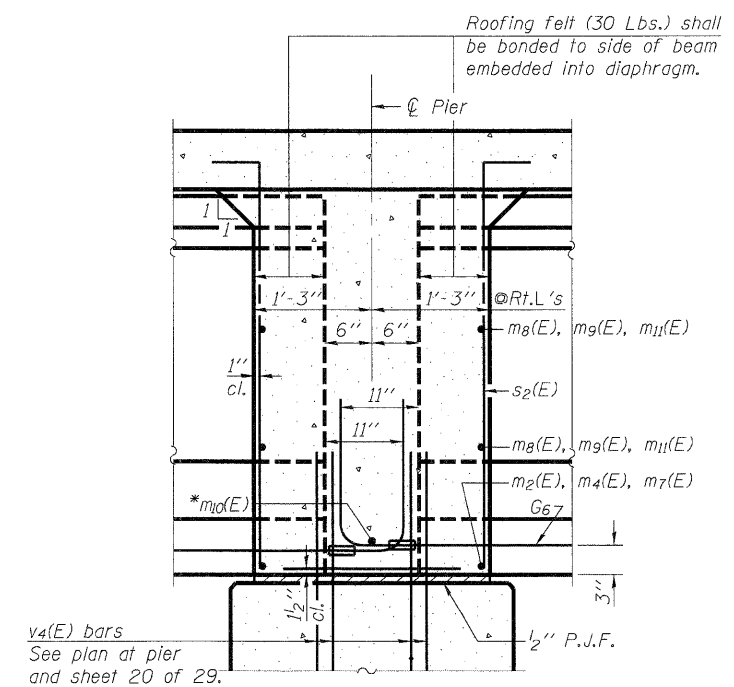


DIAPHRAGM AT PIER

MIN. BAR LAP
 #6 bar = 3'-4"



PLAN AT PIER
 (Showing bearing pad and P.J.F. details)



SECTION B-B
 Dimensions along centerline of beam, except as shown.

* Tightly fasten the #8 bars together with No. 9 wire ties.

PRINTED DATE: 12/15/2011
 FILE NAME: \\syrac\projects\148\148.dwg

DESIGNED	- SMA
CHECKED	- DF
DRAWN	- ADG
CHECKED	- DF

ESI CONSULTANTS, LTD
 753 WINDSOR ROAD
 CHARLESTON, IL 61920
 (217) 348-1920
 WWW.ESICONSULTANTS.LTD.COM
 ILLINOIS DEPARTMENT OF PROFESSIONAL REGULATION REGISTRATION #164-003685

STATE OF ILLINOIS
DEPARTMENT OF TRANSPORTATION

PIER DIAPHRAGM DETAILS
STRUCTURE NO. 096-0073
 SHEET NO. 11 OF 24 SHEETS

F.A.P. RTE.	SECTION	COUNTY	TOTAL SHEETS	SHEET NO.
823	(22,B2A)B-1 & (22,B2B)B-1	Wayne	85	66
CONTRACT NO 74216			ILLINOIS FEDERAL AID PROJECT	