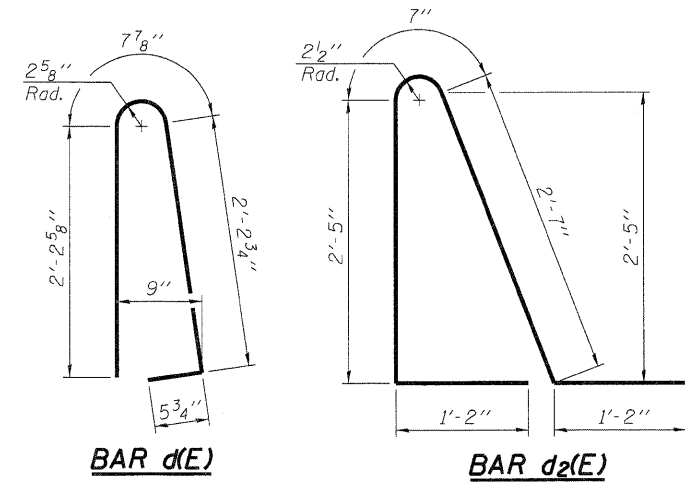


Notes:

See sheet 12 of 24 for Detail A and View B-B.
 Approach slab and parapet concrete shall be paid for as Concrete Superstructure.
 Approach footing concrete shall be paid for as Concrete Structures.
 Reinforcement shall be paid for as Reinforcement Bars, Epoxy Coated.
 For v(E) bar details, see sheet 9 of 24.
 The approach footing maximum applied service bearing pressure (Qmax) = 2.0 ksf.
 For bar splicer details, see sheet 22 of 24.
 Cost of excavation for approach footing included with Concrete Structures.
 For Porous Granular Embankment (Special) and drainage treatment details, see sheet 2 of 24.
 For additional parapet details, see sheet 9 of 24.

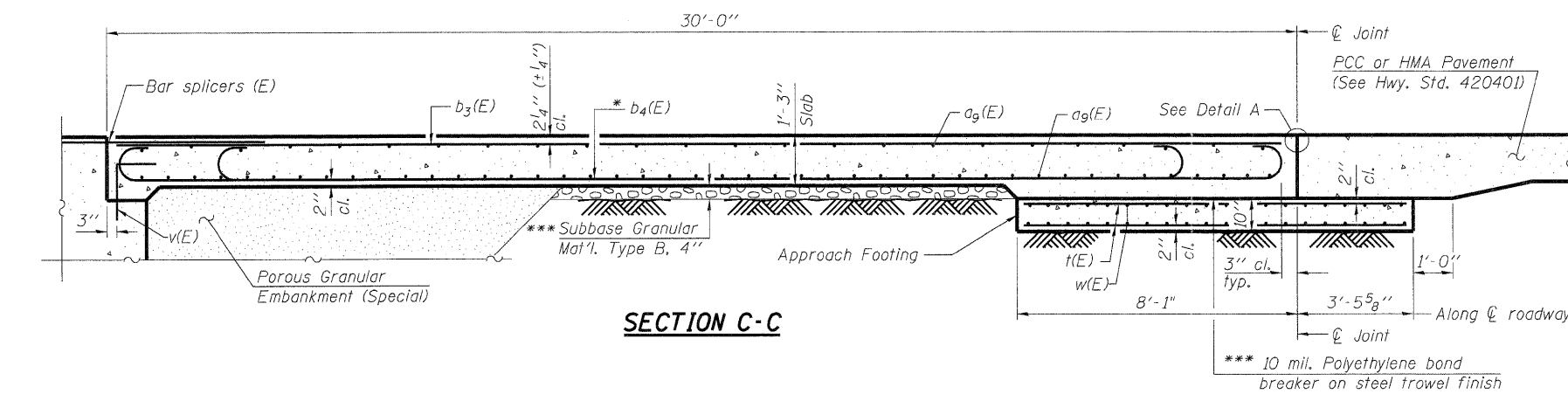


* Tilt #9 b₁(E) bars as required to maintain clearance.

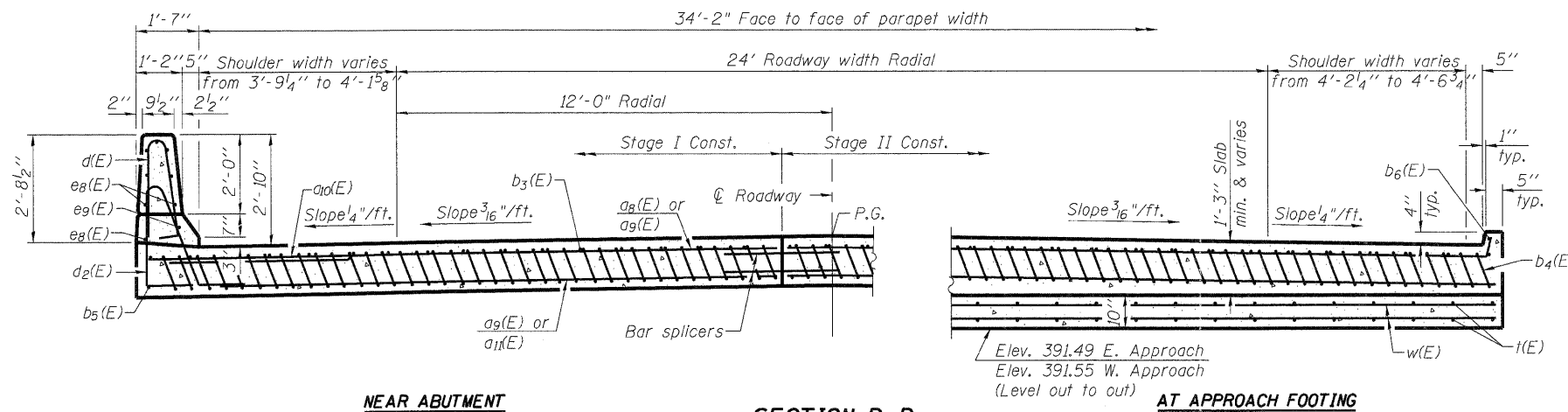
*** Cost included with Concrete Superstructure.

**TWO APPROACHES
BILL OF MATERIAL**

Bar	No.	Size	Length	Shape
a ₈ (E)	50	#4	18'-2"	—
a ₉ (E)	92	#5	17'-10"	—
a ₁₀ (E)	50	#4	21'-5"	—
a ₁₁ (E)	92	#5	21'-0"	—
a ₁₂ (E)	48	#6	6'-6"	—
b ₃ (E)	56	#4	29'-8"	—
b ₄ (E)	164	#9	29'-9"	—
b ₅ (E)	4	#4	14'-8"	—
b ₆ (E)	4	#4	13'-9"	—
d(E)	68	#5	5'-7"	⤴
d ₂ (E)	68	#5	7'-11"	⤴
e ₈ (E)	32	#4	14'-8"	—
e ₉ (E)	4	#8	14'-8"	—
t(E)	140	#4	11'-2"	—
w(E)	80	#5	17'-10"	—
w ₁ (E)	80	#5	21'-0"	—
Concrete Superstructure			Cu. Yd.	120.8
Concrete Structures			Cu. Yd.	28.1
Reinforcement Bars, Epoxy Coated			Pound	29010



SECTION C-C

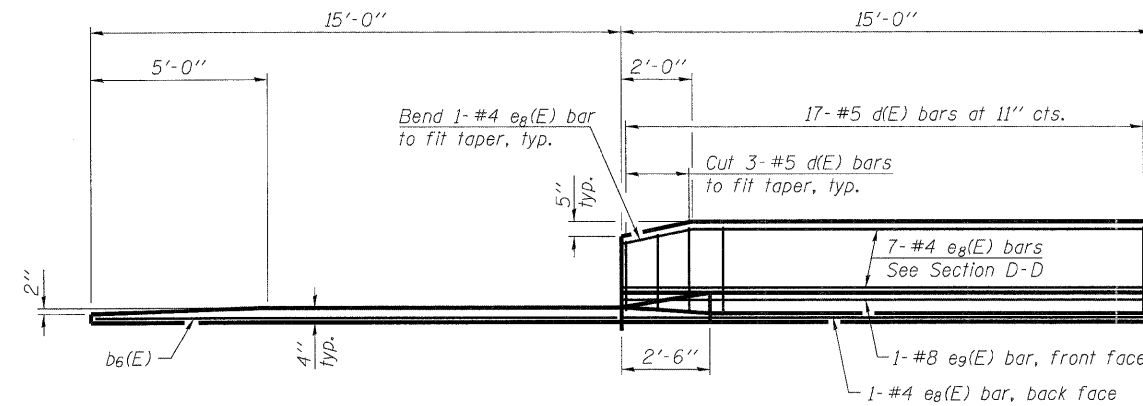


SECTION D-D

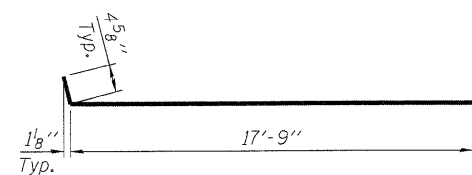
NEAR ABUTMENT

AT APPROACH FOOTING

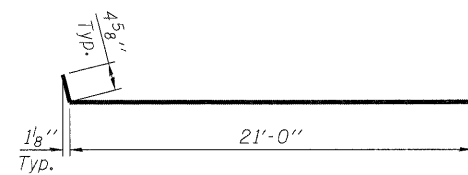
(See Plan for dimensions not shown)



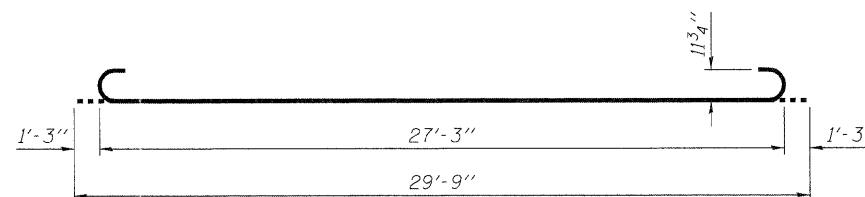
VIEW E-E



BAR a₈(E)



BAR a₁₀(E)



BAR b₄(E)

BA-L

7-1-10

(Sheet 2 of 2)

DESIGNED -	ADG
CHECKED -	DF
DRAWN -	ADG
CHECKED -	DF

ESI CONSULTANTS, LTD
 753 WINDSOR ROAD
 CHARLESTON, IL 61920
 (217) 348-1900
 WWW.ESI-CONSULTANTS.LTD.COM
 ILLINOIS DEPARTMENT OF PROFESSIONAL REGULATION REGISTRATION #184-003685

**STATE OF ILLINOIS
DEPARTMENT OF TRANSPORTATION**

**BRIDGE APPROACH SLAB DETAILS
STRUCTURE NO. 096-0073**

SHEET NO. 13 OF 24 SHEETS

F.A.P. RTE.	SECTION	COUNTY	TOTAL SHEETS	SHEET NO.
823	(22,B2A)B-1 & (22,B2B)B-1	Wayne	85	68
			CONTRACT NO 74216	
ILLINOIS FEDERAL AID PROJECT				

PRINTED DATE: 12/5/2011
 FILE NAME: n:\projects\148\148_1tem 25 - 47\various design\work Order 05\ACADD\Drawings\Sheets\88_W05_ASI\slabDet_2.dgn