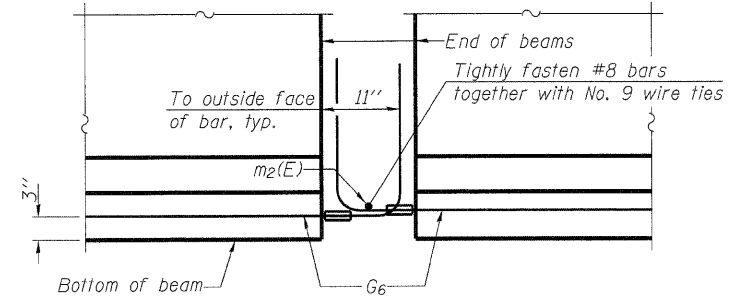
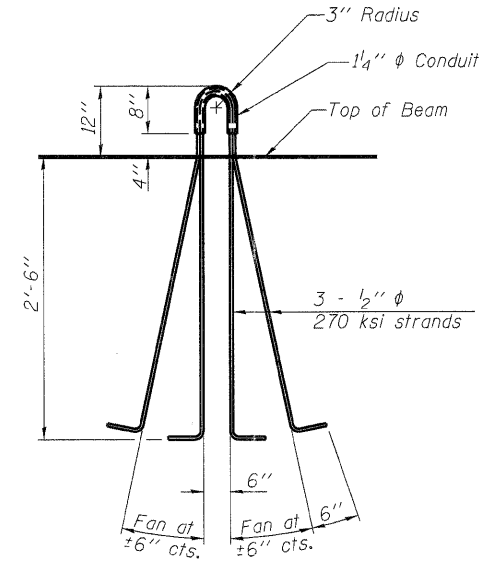


NOTES

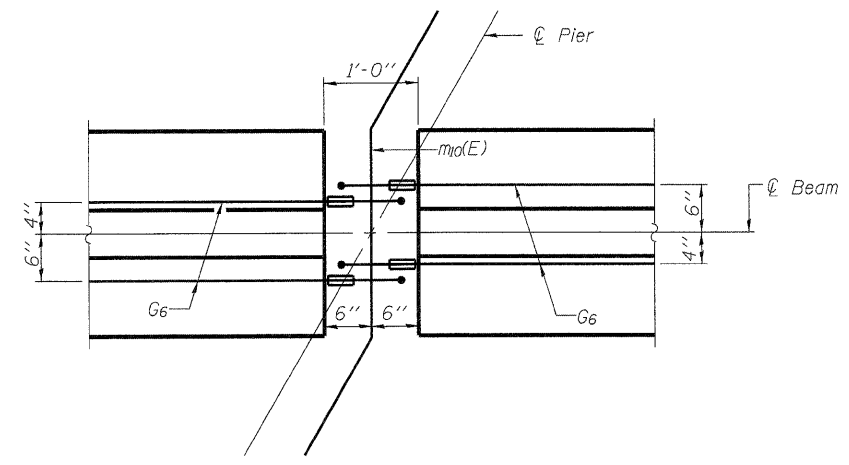
Inserts for 3/4" φ threaded dowel rods, when specified, are to be two strut, ferrule type for interior beams and single ferrule, flared loop type for exterior beams.
 Prestressing steel shall be uncoated high strength, low relaxation 7-wire strand, Grade 270. The nominal diameter shall be 1/2" and the nominal cross-sectional area shall be 0.153 sq. in.
 Reinforcement bars shall conform to ASTM A 706, Grade 60. (See Special Provisions).
 A minimum 2 1/2" φ lifting pin shall be used to engage the lifting loops during handling.
 Tilt G6 bars when necessary to maintain 1 1/2" clearance.
 The top and bottom plates shall be AASHTO M270 Grade 50.
 The bottom plates shall be galvanized according to AASHTO M111. Top plates and threaded rods need not be galvanized.
 Threaded rods shall be ASTM F 1554 Grade 55.
 The G6 bar assembly shall be capable of developing 125 percent of the yield strength of the grade 60 reinforcement bar components. The assembly shall allow completion of the splice without turning of the hook bar. The hook bar shall be threaded such that the entire coupler can be threaded onto the hook bar.
 Beams requiring G6 bar assemblies shall not be released from the fabricator until they have attained 45 days of age or older.



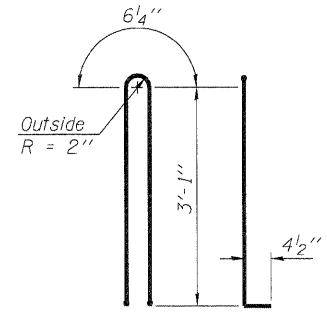
ELEVATION OF BEAM AT PIER



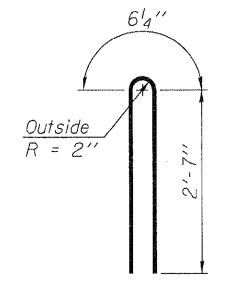
LIFTING LOOP DETAIL



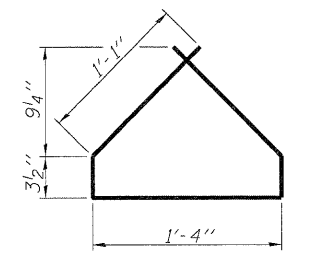
PLAN OF BEAM AT PIER



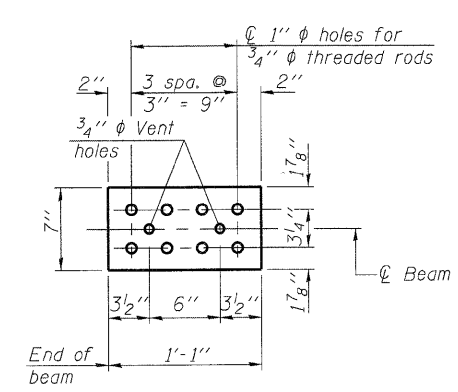
BAR G1



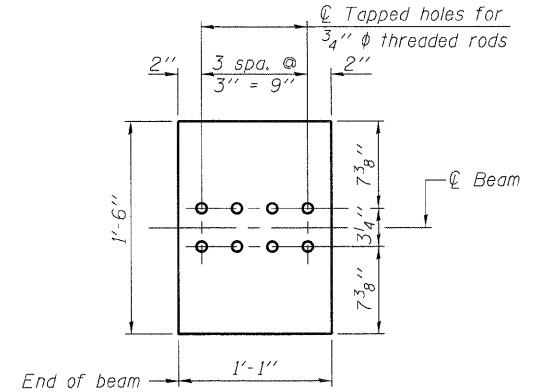
BAR G2



BAR G4

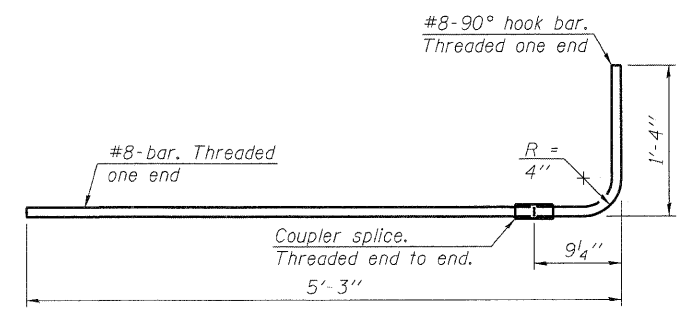


TOP PLATE



BOTTOM PLATE

See bearing details for pintle hole locations when required.



G6 BAR ASSEMBLY

BILL OF MATERIAL

Item	Unit	Total
Furnishing and Erecting Precast Prestressed Concrete I-Beams, 36"	Ft.	916

PRINTED DATE: 12/16/2011
 FILE NAME: m:\projects\148\148.dwg
 25\CONCRETE\Drawings\Sheets\72_M05_BeamDet.dwg
 148, Item 25 - 07 various design\Work Order

PI-4-36D

1-28-11

DESIGNED	- SMA
CHECKED	- DF
DRAWN	- ADG
CHECKED	- DF

ESI CONSULTANTS, LTD
 753 WINDSOR ROAD
 CHARLESTON, IL 61820
 (217) 348-1800
 WWW.ESI-CONSULTANTS.LTD.COM
 ILLINOIS DEPARTMENT OF PROFESSIONAL REGULATION REGISTRATION #184-003685

**STATE OF ILLINOIS
 DEPARTMENT OF TRANSPORTATION**

**36" PPC I-BEAM DETAILS
 STRUCTURE NO. 096-0073
 SHEET NO. 17 OF 24 SHEETS**

F.A.P. RTE	SECTION	COUNTY	TOTAL SHEETS	SHEET NO
823	(22.B2A)B-1 & (22.B2B)B-1	Wayne	85	72
CONTRACT NO 74216				
ILLINOIS FEDERAL AID PROJECT				